


BRIXTON



HOLIDAY 2024



**WE ARE A VINTAGE
INSPIRED LIFESTYLE BRAND
FROM OCEANSIDE, CA.
OUR FOUNDATION IS BUILT
ON MUSIC, GARAGE CULTURE
AND INDIVIDUALITY.**



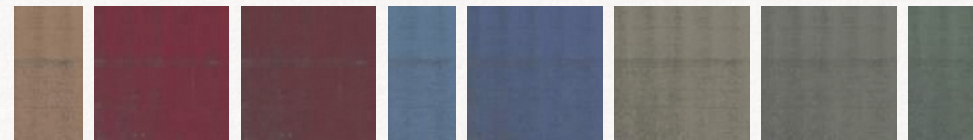
HOLIDAY 2024

**WHITE COLLAR MEETS BLUE COLLAR. HERE'S NEW COLLAR.
A MASH-UP OF UTILITARIAN WORKWEAR PIECES
WITH TRADITIONAL MENSWEAR.**

SEASONAL COLOR PALETTE



CORE NEUTRALS



HOLIDAY INJECTION

MENSWEAR MEETS UTILITY

CASS MENSWEAR JACKET

A military-inspired quilted jacket constructed with tweed for the classic menswear look. Made with a premium corduroy collar and a 200-gram fill.

SHOP MENSWEAR CHORE COAT

Inspired by 1920's chore coats is mixed with contemporary menswear style. This tailored version features a brushed wool blend material, utility pockets, and a cord-stay collar for added durability.

DILLINGER HOUNDSTOOTH BOMBER JACKET

A mid weight military inspired bomber jacket built in a menswear houndstooth fabric.

THE NEW JACKET LINEUP

NEW STYLES AND MATERIALS FOR THIS WINTER.



CASS MENSWEAR JACKET



SHOP MENSWEAR CHORE COAT



DILLINGER HOUNDSTOOTH BOMBER JACKET



70 YEARS OF
Fender STRATOCASTER



Brixton and Fender have come together to celebrate the 70th year of the iconic Stratocaster guitar. Inspired by the first Fender factory in Fullerton, California, this collaboration borrows influence from the Fender archives. We've taken vintage inspiration from the photos and videos of the 1950's factory team and combined them with new graphics and detail. All to celebrate the legendary instrument that has had an everlasting effect on the music industry.

BRIXTON
&
Fender
STRATOCASTER

FENDER FACTORY BROOD NEWSBOY CAP

XS-L

\$35/\$70

- 100% COTTON
- A 20'S INSPIRED NEWSBOY CAP
- CUSTOM FENDER COTTON HERRINGBONE
- METAL BRIXTON X FENDER CREST PIN
- LEATHER SWETBAND WITH GOLD FOIL AND PICK HOLDERS
- SUEDE UNDERBRIM
- CUSTOM GUITAR PICKS

DELIVERY 2

OLIVE SURPLUS
11719-OLVSP

FENDER FACTORY NETPLUS SNAPBACK

MEDIUM PROFILE = UNSTRUCTURED
5-PANEL FLAT BILL
O/S

\$22.50/\$45



- 100% COTTON
- DIRECT EMBROIDERY
- CUSTOM FENDER COTTON HERRINGBONE
- BRIM ROPE
- BUILT WITH A BUREO NETPLUS* VISOR MADE FROM RECYCLED FISHING NETS
- SWEATBAND IS BUILT WITH MOISTURE WICKING PROPERTIES, TO KEEP YOU FRESH AND COOL.
- ADJUSTABLE SNAPBACK CLOSURE
- FENDER BRANDING AND TRIM DETAIL



OLIVE SURPLUS
11688-OLVSP



BLACK
11688-BLACK

FENDER FACTORY JACKET

STANDARD

S-XXL

\$75/\$150

- 100% COTTON
- VINTAGE INSPIRED GARAGE JACKET
- HEAVY WEIGHT SIGNATURE ANTI-SCRATCH, WOOL FREE, VEGAN FLANNEL
- CENTER FRONT UTILITY POCKETS
- WELT POCKETS
- FENDER BRANDING AND TRIM DETAIL
- STRAIGHT HEM



FEEDBACK BROWN
17205-FBBRN

DELIVERY 2

**FENDER FACTORY BUNKER S/S
CAMP COLLAR SHIRT**

RELAXED

S-XXL

\$40/\$80

- 80% COTTON 20% RAYON
- 50'S INSPIRED CUBAN OR BOWLING SHIRT
- RELAXED FIT WITH A CAMP COLLAR
- COTTON RAYON BLEND
- STRAIGHT HEM
- FENDER BRANDING AND TRIM DETAIL



FULLERTON BLUE
01422-FLTBL

DELIVERY 2

FENDER FACTORY HOODIE

STANDARD

S-XXL

\$45/\$90



- 77% COTTON 23% RECYCLED POLYESTER
- MEDIUM WEIGHT RECYCLED FLEECE
- 300 GSM
- INSET SLEEVES
- ADJUSTABLE DRAWCORDS AT THE HOOD
- FENDER BRANDING AND TRIM DETAIL



WHITE
22641-WHITE

DELIVERY 2

FENDER FACTORY STRAT HOODIE

STANDARD

S-XXL

\$45/\$90



- 77% COTTON 23% RECYCLED POLYESTER
- MEDIUM WEIGHT RECYCLED FLEECE
- 300 GSM
- INSET SLEEVES
- ADJUSTABLE DRAWCORDS AT THE HOOD
- FENDER BRANDING AND TRIM DETAIL



WASHED BLACK
22642-WABLK

DELIVERY 2



FENDER FACTORY HOODIE



FENDER FACTORY JACKET

FENDER VOLUME S/S POCKET TEE

TAILORED

- 100% COTTON
- SCREEN PRINT

S-XXL

\$25/\$50



WHITE
17203-WHITE

DELIVERY 2

FENDER STRAT S/S TAILORED TEE

TAILORED

- 100% COTTON
- SCREEN PRINT

S-XXL

\$22.50/\$45



BLACK
17202-BLACK

DELIVERY 2

WHAT GOES INTO MAKING A BETTER HAT...



ADJUSTABLE HEADWEAR

Most of our brims have a built-in fit adjuster. Just pull back sweatband inside the crown of the hat to reveal the adjuster tab. Pull to your liking and affix to the velcro tab. Adjust as needed for the perfect fit.



CRUELTY FREE WOOL

Wool is a naturally biodegradable textile with temperature regulating properties. We use cruelty-free wool that ensures animal welfare and fair handling.



SUN PROTECTION

Most our brimmed headwear gives powerful 50+ UPF coverage from harmful ultraviolet rays.







BRENTON CONVERTABRIM FEDORA

BRIM LENGTH: 10.25CM/4"
CROWN HEIGHT: 9.5CM/3.75"
XS-XL

\$60/\$120



DELIVERY I

- 100% WOOL FELT
- A RANCHER INSPIRED FEDORA YOU CAN WEAR THREE DIFFERENT WAYS
- MEDIUM STIFFNESS
- ADAPTABLE CONVERTIBLE BRIM THAT CAN BE FLIPPED UP OR DOWN.
- DIAMOND CROWN
- ADJUSTABLE VELCRO STRAP UNDER SWEATBAND FOR CUSTOM FIT
- LEATHER BAND
- METAL HEADWEAR PLAQUE
- WOMEN'S



*TOBACCO BROWN
11785-TBCBN



*DOVE
11785-DOVE

SWINDLE CONVERTABRIM FEDORA

BRIM LENGTH: 8CM/3"
CROWN HEIGHT: 10.5CM/4"
XS-XL

\$50/\$100



DELIVERY I

- 100% WOOL FELT
- A CLASSIC 50'S INSPIRED FEDORA YOU CAN WEAR THREE DIFFERENT WAYS
- MEDIUM STIFFNESS
- ADAPTABLE CONVERTIBLE BRIM THAT CAN BE FLIPPED UP OR DOWN.
- TEARDROP CROWN
- ADJUSTABLE VELCRO STRAP UNDER SWEATBAND FOR CUSTOM FIT
- GROSGRAIN BAND
- METAL HEADWEAR PLAQUE
- UNISEX



*GREY/GREY
11708-GRYGR

DAYTON CONVERTABRIM RANCHER HAT

BRIM LENGTH: 8CM/3"
CROWN HEIGHT: 10.5CM/4"
XS-XL

\$60/\$120



DELIVERY I

- 100% WOOL FELT
- A CLASSIC RANCHER HAT YOU CAN WEAR THREE DIFFERENT WAYS
- LIGHT STIFFNESS
- ADAPTABLE CONVERTIBLE BRIM THAT CAN BE FLIPPED UP OR DOWN.
- TEARDROP CROWN
- ADJUSTABLE VELCRO STRAP UNDER SWEATBAND FOR CUSTOM FIT
- DOUBLE GROSGRAIN BAND
- METAL HEADWEAR PLAQUE
- UNISEX



*BLACK/BLACK
11453-BKBLK



*COFFEE/BROWN
11453-COFBN

INTRODUCING
WTHR GUARD™

THE WTHR GUARD™ COLLECTION IS BUILT FOR EVERYDAY WEAR, DEVELOPED TO KEEP YOU COOL AND DRY. ALL PIECES ARE PROUDLY MADE IN 100% CRUELTY-FREE WATER REPELLENT AUSTRALIAN FELT WHICH IS BREATHABLE, AND ACCOMPANIED BY AN ANTI-MICROBIAL SWEATBAND. A HAT PERFECT FOR ANY AND ALL WEATHER.

RAIN OR SHINE

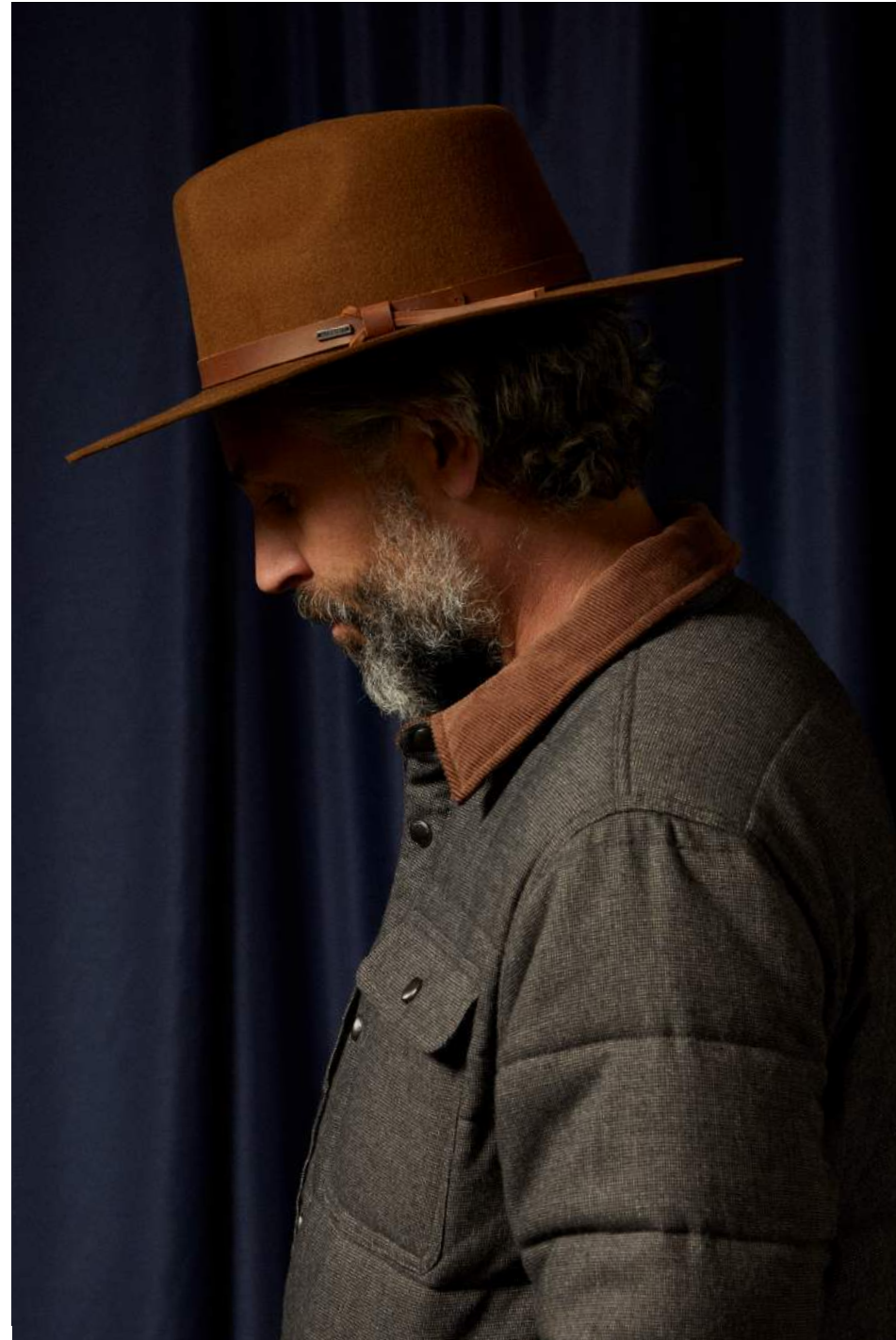
**HAWKINS
WTHR GUARD™
COWBOY HAT**

PART OF THE
**WTHR GUARD™
COLLECTION**

**100% CRUELTY FREE WATER REPELLENT FELT
ANTIMICROBIAL MOISTURE-WICKING SWEATBAND
ADJUSTABLE VELCRO STRAP UNDER SWEATBAND
PREMIUM EXTERIOR TRIM**







HAWKINS WTHR GUARD™ COWBOY HAT

HAWKINS WTHR GUARD COWBOY HAT

BRIM LENGTH: 8CM/3.25"
CROWN HEIGHT: 10.5CM/4"
XS-XL

\$60/\$120



DELIVERY I

- 100% WATER REPELLENT AUSTRALIAN WOOL FELT
- LEATHER BAND
- ANTIMICROBIAL MOISTURE-WICKING SWEATBAND
- MEDIUM STIFFNESS
- TEARDROP CROWN
- STRAIGHT BRIM
- ADJUSTABLE VELCRO STRAP UNDER SWEATBAND FOR CUSTOM FIT
- METAL HEADWEAR PLAQUE
- UNISEX



*BLACK
11733-BLACK



*COFFEE
11733-COFFE

SCOTTSDALE WTHR GUARD HAT

BRIM LENGTH: 8CM/3.25"
CROWN HEIGHT: 10CM/4"
XS-XL

\$55/\$110



DELIVERY I

- 100% WATER REPELLENT AUSTRALIAN WOOL FELT
- RUST FREE EYELETS FOR BREATHABILITY
- ANTIMICROBIAL MOISTURE-WICKING SWEATBAND
- SHAPEABLE BRIM WITH WIRE TO SHAPE TO YOUR DESIRED LOOK
- LIGHT STIFFNESS
- TEARDROP CROWN
- ADJUSTABLE VELCRO STRAP UNDER SWEATBAND FOR CUSTOM FIT
- METAL HEADWEAR PLAQUE
- UNISEX



*CHOCOLATE
11734-CHOCO



**SAND
11734-SAND

WESLEY WTHR GUARD PACKABLE FEDORA

BRIM LENGTH: 6CM/2.75"
CROWN HEIGHT: 11CM/4.25"
XS-XL

\$45/\$90



DELIVERY I

- 100% WATER REPELLENT AUSTRALIAN WOOL FELT
- LEATHER BAND AND NECK ROPE
- ANTIMICROBIAL MOISTURE-WICKING SWEATBAND
- RUST FREE EYELETS FOR BREATHABILITY
- FLAT PACKABLE FOR ANY AND ALL ADVENTURES
- LIGHT STIFFNESS
- FLAT BRIM
- TEARDROP CROWN
- ADJUSTABLE VELCRO STRAP UNDER SWEATBAND FOR CUSTOM FIT
- METAL HEADWEAR PLAQUE
- UNISEX



*BLACK
11732-BLACK



**LIGHT MOSS
11732-LGTMS



RANGE 70'S COWBOY HAT

LAREDO COWBOY HAT

BRIM LENGTH: 9.8CM/3.85"
CROWN HEIGHT: 11CM/4.25"
XS-XL

\$65/\$130



DELIVERY I

- 100% WOOL FELT
- A TRADITIONAL COWBOY HAT
- HARD STIFFNESS
- SIDE ROLL BRIM
- CATTLEMAN CROWN
- MOISTURE WICKING SWEATBAND
- ADJUSTABLE VELCRO STRAP UNDER SWEATBAND FOR CUSTOM FIT
- SUEDE DOUBLE WRAPPED BAND
- METAL HEADWEAR PLAQUE
- UNISEX



*SAND
11722-SAND

RANGE 70'S COWBOY HAT

BRIM LENGTH: 7.3CM/3"
CROWN HEIGHT: 11CM/4.25"
XS-L

\$45/\$90



DELIVERY I

- 100% COTTON
- A NOVELTY APPROACH TO A COWBOY HAT
- SHAPEABLE BRIM WITH WIRE TO SHAPE TO YOUR DESIRED LOOK
- MEDIUM STIFFNESS
- SIDE ROLL BRIM
- CATTLEMAN CROWN
- ADJUSTABLE VELCRO STRAP UNDER SWEATBAND FOR CUSTOM FIT
- LEATHER BAND
- METAL HEADWEAR PLAQUE
- WOMEN'S



TOBACCO BROWN CORD
11709-TBCBC



DENIM
11709-DENIM

COHEN COWBOY HAT

BRIM LENGTH: 8CM/3.25"
CROWN HEIGHT: 10.5CM/4"
XS-XL

\$60/\$120



DELIVERY I

- 100% WOOL FELT
- AN EASY TO WEAR APPROACHABLE COWBOY HAT
- HARD STIFFNESS
- STRAIGHT BRIM
- TEARDROP CROWN
- ADJUSTABLE VELCRO STRAP UNDER SWEATBAND FOR CUSTOM FIT
- GROSGRAIN BAND
- METAL HEADWEAR PLAQUE
- UNISEX



*BLACK
10704-BLACK



*SAND
10704-SAND



*DOVE/DOVE
10704-DVEDV

FIELD PROPER HAT

BRIM LENGTH: 9CM/3.5"
CROWN HEIGHT: 10CM/4"
XS-XL

\$55/\$110

- AN OUTDOOR ADVENTURE SILHOUETTE BUILT IN FELT
- 100% WOOL FELT
- LIGHT STIFFNESS
- STRAIGHT BRIM
- TEARDROP CROWN
- ADJUSTABLE VELCRO STRAP UNDER SWEATBAND FOR CUSTOM FIT
- 100% GENUINE LEATHER BAND WITH TAILS
- METAL HEADWEAR PLAQUE
- UNISEX



*BLACK
10956-BLACK

DELIVERY I

20TH ANNIVERSARY TILLER HAT

BRIM LENGTH: 8CM/3.25"
CROWN HEIGHT: 12CM/4.75"
XS-XL

\$45/\$90

- 100% WOOL FELT
- A WIDE BRIM OUTDOOR INSPIRED FEDORA
- LIGHT STIFFNESS
- LEATHER DRAWCORD
- ROUND CROWN
- STRAIGHT BRIM
- ADJUSTABLE VELCRO STRAP UNDER SWEATBAND FOR CUSTOM FIT
- METAL HEADWEAR PLAQUE
- UNISEX
- 20TH ANNIVERSARY BRANDING AND TRIM



BLACK
11703-BLACK

DELIVERY I



HARPER FELT HAT

BRIM LENGTH: 9.5CM/3.75"
CROWN HEIGHT: 10CM/4"
XS-L

\$60/\$120

- 100% WOOL FELT
- A FASHION INSPIRED HAT
- MEDIUM STIFFNESS
- DOWNTICK FRONT AND BACK BRIM
- TEARDROP CROWN
- ADJUSTABLE VELCRO STRAP UNDER SWEATBAND FOR CUSTOM FIT
- GENUINE LEATHER BAND
- METAL HEADWEAR PLAQUE
- WOMEN'S



*DOVE/DOVE
11710-DVEDV

DELIVERY I

CASSIDY BOATER FELT HAT

BRIM LENGTH: 10CM/4"
CROWN HEIGHT: 10CM/3.75"
XS-L

\$60/\$120

- 100% WOOL FELT
- A FASHION INSPIRED BOATER
- HARD STIFFNESS
- UPTICK BRIM
- BOATER CROWN
- ADJUSTABLE VELCRO STRAP UNDER SWEATBAND FOR CUSTOM FIT
- METAL HEADWEAR PLAQUE
- WOMEN'S



*TIMBERWOLF
11711-TMBWF

DELIVERY I





VICTORIA FELT FEDORA

VICTORIA FELT FEDORA

BRIM LENGTH: 9CM/3.5"
CROWN HEIGHT: 10CM/4"
XS-L

\$65/\$130



DELIVERY I

- 100% WOOL FELT
- A 50'S INSPIRED FEDORA
- HARD STIFFNESS
- PENCIL ROLL BRIM
- TEARDROP CROWN
- ADJUSTABLE VELCRO STRAP UNDER SWEATBAND FOR CUSTOM FIT
- SATIN BAND
- METAL CREST PIN
- WOMEN'S



*BLACK/BLACK SATIN
11511-BKBLS



*TIMBERWOLF/ROSE GOLD SATIN
11511-TMWRG

RENO FEDORA

BRIM LENGTH: 9CM/3.5"
CROWN HEIGHT: 11CM/4.25"
XS-XL

\$60/\$120



DELIVERY I

- 100% WOOL FELT
- A 50'S INSPIRED FEDORA
- CROWN - LIGHT STIFFNESS
BRIM - MEDIUM STIFFNESS
- UPTICK BRIM
- TEARDROP CROWN
- ADJUSTABLE VELCRO STRAP UNDER SWEATBAND FOR CUSTOM FIT
- BRIM TAPING
- GROSGRAIN BAND
- METAL HEADWEAR PLAQUE
- UNISEX



*BLACK/BLACK
11040-BKBLK



*MOSS/BROWN
11040-MSBRN



DARK GREY/COPPER
11040-DKGCP



JOANNA FELT PACKABLE HAT

BRIM LENGTH: 8.5CM/3.35"
CROWN HEIGHT: 10CM/4"
XS-L

\$45/\$90



DELIVERY I

- 100% WOOL FELT
- AN ELEGANT WIDE BRIM THAT IS PACKABLE
- LIGHT STIFFNESS
- DOWNTICK BRIM
- TEARDROP CROWN
- ADJUSTABLE VELCRO STRAP UNDER SWEATBAND FOR CUSTOM FIT
- GROSGRAIN BAND
- METAL HEADWEAR PLAQUE
- WOMEN'S



*DARK GREY
10628-DKGRY



*OFF WHITE
10628-OFFWH

MESSER PACKABLE FEDORA

BRIM LENGTH: 6CM/2.5"
CROWN HEIGHT: 9.5CM/3.75"
XS-XL

\$45/\$90



DELIVERY I

- 100% WOOL FELT
- A 20'S INSPIRED CLASSIC FEDORA THAT IS PACKABLE
- LIGHT STIFFNESS
- STRAIGHT BRIM
- TEARDROP CROWN
- ADJUSTABLE VELCRO STRAP UNDER SWEATBAND FOR CUSTOM FIT
- GROSGRAIN BAND
- METAL CREST PIN
- UNISEX



*BLACK/BLACK
10607-BKBLK



*TIMBERWOLF/LIGHT BROWN
10607-TMWLB



MESSER FEDORA

MESSER FEDORA

BRIM LENGTH: 6CM/2.5"
CROWN HEIGHT: 9.5CM/3.75"
XS-XL

\$40/\$80



DELIVERY I

- 100% WOOL FELT
- A 20'S INSPIRED CLASSIC FEDORA
- LIGHT STIFFNESS
- STRAIGHT BRIM
- TEARDROP CROWN
- ADJUSTABLE VELCRO STRAP UNDER SWEATBAND FOR CUSTOM FIT
- FAUX LEATHER BAND
- METAL CREST PIN
- UNISEX



*BLACK
10763-BLACK



*SAND
10763-SAND



*LIGHT MOSS
10763-LGTMS

WESLEY FEDORA

BRIM LENGTH: 6CM/2.75"
CROWN HEIGHT: 11CM/4.25"
XS-XL

\$40/\$80



DELIVERY I

- 100% WOOL FELT
- A 20'S INSPIRED CLASSIC FEDORA
- LIGHT STIFFNESS
- STRAIGHT BRIM
- TEARDROP CROWN
- ADJUSTABLE VELCRO STRAP UNDER SWEATBAND FOR CUSTOM FIT
- LEATHER BAND
- METAL HEADWEAR PLAQUE
- UNISEX



**BLACK
10761-BLACK



*LIGHT TAN
10761-LTTAN



ROMA FEDORA

ROMA FEDORA

BRIM LENGTH: 5.5CM/2.25"
CROWN HEIGHT: 10.5CM/4"
XS-XL

\$40/\$80



DELIVERY I

- 100% WOOL FELT
- A 50'S INSPIRED SHORT BRIM FEDORA
- MEDIUM STIFFNESS
- DOWNTICK BRIM
- TEARDROP CROWN
- ADJUSTABLE VELCRO STRAP UNDER SWEATBAND FOR CUSTOM FIT
- GROSGRAIN BAND
- METAL CREST PIN
- UNISEX



*BLACK/GREY CHARCOAL
11705-BLKGC

STOUT PORK PIE

BRIM LENGTH: 4CM/1.5"
CROWN HEIGHT: 9CM/3.5"
XS-XL

\$35/\$70



DELIVERY I

- 100% WOOL FELT
- A 20'S INSPIRED TRADITIONAL MENSWEAR FEDORA
- MEDIUM STIFFNESS
- UPTICK BRIM
- DIAMOND CROWN
- ADJUSTABLE VELCRO STRAP UNDER SWEATBAND FOR CUSTOM FIT
- SATIN BAND
- METAL CREST CLIP
- UNISEX



**BLACK/BLACK
10764-BKBLK



*LIGHT MOSS/COFFEE DIAMOND
10764-LGMCD



LIGHT GREY/GREY DIAMOND
10764-LGGGD

GAIN FEDORA

BRIM LENGTH: 4CM/1.5"
CROWN HEIGHT: 10CM/4"
XS-XL

\$35/\$70



DELIVERY I

- 100% WOOL FELT
- A 20'S INSPIRED TRADITIONAL MENSWEAR FEDORA
- MEDIUM STIFFNESS
- UPTICK BRIM
- CENTER DENT CROWN
- ADJUSTABLE VELCRO STRAP UNDER SWEATBAND FOR CUSTOM FIT
- GROSGRAIN BAND
- CUSTOM LINER
- METAL CREST PIN
- UNISEX



**BLACK
10765-BLACK



EZRA PACKABLE BUCKET HAT

WOODBURN PACKABLE BUCKET HAT

BRIM LENGTH: 5CM/2"

S/M, L/XL

\$25/\$50

- 97% COTTON 3% SPANDEX
- TREATED WITH A SOL WASH FOR A SOFT HAND AND LIVED IN LOOK
- STRETCH SWEATBAND BUILT WITH MOISTURE WICKING PROPERTIES
- WOVEN LABEL
- UNISEX



DELIVERY I



*BLACK SOL WASH
11619-BKSWH



*SAND SOL WASH
11619-SNDSW



*VETIVER SOL WASH
11619-VTVSW

EZRA PACKABLE BUCKET HAT

BRIM LENGTH: 7CM/2.75"

S/M, L/XL

\$25/\$50

- 92% POLYESTER 4% VISCOSE 4% SPANDEX
- AN EASY TO WEAR NOVELTY BUCKET HAT
- HOUNDSTOOTH PLAID
- WOVEN LABEL
- SHAPEABLE BRIM
- UNISEX



DELIVERY I



SAND/LIGHT BLUE
11712-SNDLB

CUT & SEW HEADWEAR





KAYLA RESERVE CAP

KAYLA RESERVE CAP

XS-L

\$70/\$140

- 100% GENUINE LEATHER BRIM
- A 50'S INSPIRED CLASSIC FISHERMAN'S CAP
- GENUINE SUEDE CROWN
- BRAIDED LEATHER BAND
- METAL HEADWEAR PIN



TAN/BROWN
11715-TNBRN



CREAM/CREAM
11715-CRCRM

FIDDLER FISHERMAN CAP

XS-XL

\$30/\$60

- 100% COTTON
- A 50'S INSPIRED CLASSIC FISHERMAN'S CAP
- METAL CREST PIN
- CUSTOM LINER



RED MAHOGANY
10772-RDMHG



**BLACK
10772-BLACK

DELIVERY I

20TH ANNIVERSARY FIDDLER CAP

XS-L

\$35/\$70

- 100% COTTON
- A 50'S INSPIRED CLASSIC FISHERMAN'S CAP
- HERRINGBONE TWILL
- UNISEX
- 20TH ANNIVERSARY BRANDING AND TRIM



OLIVE
11718-OLIVE



DELIVERY I

HOLIDAY 2024





HOOLOGAN FLANNEL FLAT CAP

XS-XL

\$30/\$60

- 50% WOOL 50% POLYESTER
- A 20'S INSPIRED CLASSIC FLAT CAP
- FAUX MELTON WOOL EXTERIOR
- BRUSHED HEAVYWEIGHT FLANNEL INTERIOR FOR ADDED WARMTH
- METAL CREST PIN



*BLACK
11753-BLACK



*TOBACCO BROWN
11753-TBCBN

DELIVERY I

HOOLOGAN FLAT CAP

XS-XL

\$25/\$50

- 70% POLYESTER 30% COTTON (DMRWS), 100% COTTON (PNCBN, BLACK), 95% POLYESTER 5% WOOL (GYBLK, BRKHK)
- A 20'S INSPIRED CLASSIC FLAT CAP
- DENIM/CORD (DENIM RINSE/ WOODSMOKE), CORD (PINECONE BROWN).
- METAL CREST PIN
- CUSTOM LINER



**BLACK
10771-BLACK



**BROWN/KHAKI
10771-BRKHK



**GREY/BLACK
10771-GYBLK



DENIM RINSE/WOODSMOKE
10771-DMRWS



PINECONE BROWN
10771-PNCBN

DELIVERY I

BROOD RESERVE SNAP CAP

XS-XL

- 100% SUEDE
- A 20'S INSPIRED NEWSBOY CAP
- METAL CREST PIN
- CUSTOM LINER

\$60/\$120



TOFFEE SUEDE
10614-TOFSD

DELIVERY I

BROOD SHERPA NEWSBOY CAP

XS-XL

- 100% COTTON
- A 20'S INSPIRED NEWSBOY CAP
- COTTON CANVAS EXTERIOR
- LINED WITH SHERPA FOR EXTRA WARMTH
- METAL CREST PIN

\$30/\$60



*BLACK
11752-BLACK



*PINECONE BROWN
11752-PNCBN

DELIVERY I

BROOD BAGGY NEWSBOY CAP

XS-XL

- 70% POLYESTER 30% WOOL
- A 20'S INSPIRED CLASSIC NEWSBOY CAP
- HERRINGBONE
- METAL CREST PIN

\$30/\$60



*BLACK
10616-BLACK

DELIVERY I

BROOD NEWSBOY CAP

XS-XL

- 100% COTTON (BLACK), 95% POLYESTER 5% WOOL (GYBLK, BRKHK), 70% POLYESTER 30% WOOL (MOSOR)
- A 20'S INSPIRED CLASSIC NEWSBOY CAP
- HERRINGBONE PLAID (MOSS/ORANGE)
- METAL CREST PIN
- CUSTOM LINER

\$25/\$50



MOSS/ORANGE
10770-MOSOR



**GREY/BLACK
10770-GYBLK



**BROWN/KHAKI
10770-BRKHK



**BLACK
10770-BLACK

DELIVERY I



GINSBURG HAT

XS-L

\$30/\$60

- 95% POLYESTER
5% WOOL (TFEOW),
100% POLYESTER (OATML)
- A 1940'S MILITARY INSPIRED
WINTER CAP
- FAUX SUEDE CROWN
- SHERPA LINING
- CUSTOM LINER



TOFFEE/OFF WHITE
11009-TFEOW



*OATMEAL
11009-OATML

DELIVERY I



SNAPBACKS

FROM FISH NETS TO HATS.

Brixton offers a range of snapback hats with a brim made from Bureo's NetPlus 100% recycled fishing net material instead of virgin plastic. By using NetPlus® in our visors, we're helping to clean up one of the world's most precious resources.

BRIXTON IS MAKING AN IMPACT

REDUCED FISHING NET WASTE BY:	44,526 LB	REDUCTION IN GREENHOUSE GAS EMISSIONS BY:	24,438 KG
-------------------------------	------------------	---	------------------



RAW PLASTIC MADE FROM FISH NETS

HOME TEAM SNAPBACK

HIGH PROFILE = UNSTRUCTURED
5-PANEL FLAT BILL
O/S

\$20/\$40

- 60% COTTON 40% POLYESTER
- DIRECT EMBROIDERY
- CUSTOM VINTAGE FIT
- ADJUSTABLE SNAPBACK CLOSURE



BLACK
11700-BLACK

DELIVERY I

STATION NETPLUS SNAPBACK

HIGH PROFILE = UNSTRUCTURED
5-PANEL FLAT BILL
O/S

\$20/\$40

- 100% COTTON
- MERROWED-EDGE EMBROIDERED PATCH
- CUSTOM VINTAGE FIT
- BUILT WITH A BUREO NETPLUS® VISOR MADE FROM RECYCLED FISHING NETS
- SWEATBAND IS BUILT WITH MOISTURE WICKING PROPERTIES, TO KEEP YOU FRESH AND COOL.
- ADJUSTABLE SNAPBACK CLOSURE



BLACK
11701-BLACK

DELIVERY I

TOWNSHIP NETPLUS SNAPBACK

HIGH PROFILE = UNSTRUCTURED
6-PANEL FLAT BILL
O/S

\$20/\$40

- 100% COTTON
- MERROWED-EDGE EMBROIDERED PATCH
- CUSTOM VINTAGE FIT
- ADJUSTABLE SNAPBACK CLOSURE



*BLACK
11685-BLACK



DENIM RINSE
11685-DNMR5

DELIVERY I

GRADE SNAPBACK

HIGH PROFILE = UNSTRUCTURED
6-PANEL FLAT BILL
O/S

\$20/\$40

- 100% COTTON (BLOGW), 60% COTTON 40% POLYESTER (OFFBK), 65% POLYESTER 35% COTTON (CAMO)
- MERROWED-EDGE EMBROIDERED PATCH
- CUSTOM VINTAGE FIT
- 20TH ANNIVERSARY BRANDING AND TRIM
- ADJUSTABLE SNAPBACK CLOSURE



**BLACK/ORANGE/WHITE
11697-BLOGW



OFF WHITE/BLACK
11697-OFFBK



CAMO
11697-CAMO

DELIVERY I

BUILDERS ADJUSTABLE HAT

MEDIUM PROFILE = UNSTRUCTURED
5-PANEL FLAT BILL
O/S

\$25/\$50

- 63% COTTON 35% RECYCLED POLYESTER 2% ELASTANE
- MERROWED-EDGE EMBROIDERED PATCH
- SWEATBAND IS BUILT WITH MOISTURE WICKING PROPERTIES, TO KEEP YOU FRESH AND COOL.
- PENCIL HOLDER
- ADJUSTABLE SNAPBACK CLOSURE



*BLACK
11488-BLACK



PINECONE BROWN
11488-PNCBN

DELIVERY I

NORVELL SNAPBACK

MEDIUM PROFILE = UNSTRUCTURED
5-PANEL FLAT BILL
O/S

\$20/\$40

- 100% COTTON
- MERROWED-EDGE EMBROIDERED PATCH
- ADJUSTABLE SNAPBACK CLOSURE



DARK OLIVE
11689-DKOLI

DELIVERY I



GRADE SNAPBACK



OSBORN SNAPBACK

OSBORN SNAPBACK

MEDIUM PROFILE = UNSTRUCTURED
5-PANEL FLAT BILL
O/S

- 60% COTTON 40% POLYESTER
- MERROWED-EDGE
- EMBROIDERED PATCH
- ADJUSTABLE SNAPBACK CLOSURE

\$20/\$40



PINECONE BROWN
11690-PNCBN

DELIVERY I

GRADE SNAPBACK

MEDIUM PROFILE = UNSTRUCTURED
5-PANEL CURVE BILL
O/S

- 100% COTTON
- DEBOSSED LEATHER PATCH
- WASHED COTTON CANVAS

\$25/\$50



WOODSMOKE
11735-WODSK

DELIVERY I



SHELBY ADJUSTABLE HAT

BIG B ADJUSTABLE HAT

MEDIUM PROFILE = UNSTRUCTURED
6-PANEL CURVED BILL
O/S

\$22.50/\$45

- 100% POLYESTER
- FELT PATCH
- COTTON CORDUROY (EMERALD, BLUE MIRAGE)
- POLAR FLEECE (OATMEAL)
- ADJUSTABLE LEATHER STRAP CLOSURE



*EMERALD CORD
11158-EMRDC



OATMEAL POLAR FLEECE
11158-OMLPF

DELIVERY I

SHELBY ADJUSTABLE HAT

MEDIUM PROFILE = UNSTRUCTURED
6-PANEL CURVED BILL
O/S

\$22.50/\$45

- 93% POLYESTER 3% RAYON 4% SPANDEX (SNDHT), 50% WOOL 50% POLYESTER (GRYBH)
- FLAG LABEL
- HOUNDSTOOTH (SAND)
- HERRINGBONE (GREY/BLACK)
- ADJUSTABLE LEATHER STRAP CLOSURE



SAND HOUNDSTOOTH
11721-SNDHT



GREY/BLACK HERRINGBONE
11721-GRYBH

DELIVERY I

WOODBURN NETPLUS SNAPBACK

MEDIUM PROFILE = STRUCTURED
6-PANEL FLAT BILL
O/S

\$20/\$40

- 85% ACRYLIC 15% WOOL
- DIRECT EMBROIDERY
- BUILT WITH A BUREO NETPLUS® VISOR MADE FROM RECYCLED FISHING NETS
- SWEATBAND IS BUILT WITH MOISTURE WICKING PROPERTIES, TO KEEP YOU FRESH AND COOL.
- ADJUSTABLE SNAPBACK CLOSURE



DELIVERY I



*BLACK
11691-BLACK



BROWN
11691-BROWN

OATH III SNAPBACK

MEDIUM PROFILE = STRUCTURED
6-PANEL FLAT BILL
O/S

\$20/\$40

- 80% ACRYLIC 20% WOOL (BLACK, LHGBK), 100% COTTON (DKVTR), 97% COTTON 3% SPANDEX (BKCRD)
- MERROWED-EDGE EMBROIDERED PATCH
- CORDUROY (BLACK CORD)
- ADJUSTABLE SNAPBACK CLOSURE



**BLACK
10777-BLACK



*LIGHT HEATHER GREY/BLACK
10777-LHGBK



DARK VETIVER
10777-DKVTR

DELIVERY I



BLACK CORD
10777-BKCRD

OATH TRUCKER HAT

MEDIUM PROFILE = STRUCTURED
5-PANEL FLAT BILL
O/S

\$17.50/\$35

- 60% COTTON 40% POLYESTER
- MERROWED-EDGE EMBROIDERED PATCH
- MESH BACK
- ADJUSTABLE SNAPBACK CLOSURE



**BLACK/BLACK
11627-BKBLK



TAN/LIGHT TAN
11627-TANLT

DELIVERY I

POTION NEPLUS TRUCKER HAT

HIGH PROFILE = FOAM FRONT
5-PANEL FLAT BILL
O/S

\$17.50/\$35

- 100% POLYESTER
- SCREEN PRINT
- CUSTOM VINTAGE FIT
- MESH BACK
- BUILT WITH A BUREO NETPLUS® VISOR MADE FROM RECYCLED FISHING NETS
- SWEATBAND IS BUILT WITH MOISTURE WICKING PROPERTIES, TO KEEP YOU FRESH AND COOL.
- ADJUSTABLE SNAPBACK CLOSURE



BLACK/BLACK
11720-BKBLK

DELIVERY I

ALPHA BLOCK NETPLUS TRUCKER HAT

MEDIUM PROFILE = STRUCTURED
5-PANEL CURVED BILL
O/S

\$17.50/\$35

- 57% POLYESTER 43% ORGANIC COTTON
- 57% POLYESTER 43% COTTON (CAMO/CAMO)
- MERROWED-EDGE EMBROIDERED PATCH
- MESH BACK
- BUILT WITH A BUREO NETPLUS® VISOR MADE FROM RECYCLED FISHING NETS
- SWEATBAND IS BUILT WITH MOISTURE WICKING PROPERTIES, TO KEEP YOU FRESH AND COOL.
- ADJUSTABLE SNAPBACK CLOSURE



*BLACK
10867-BLACK



BROWN/SAND
10867-BRNSD



CAMO/CAMO
10867-CMOCM

DELIVERY I

REGAL NETPLUS TRUCKER HAT

MEDIUM PROFILE = STRUCTURED
6-PANEL CURVED BILL
O/S

\$17.50/\$35



DELIVERY I

- 57% POLYESTER 43% COTTON
- MERROWED-EDGE EMBROIDERED PATCH
- MESH BACK
- BUILT WITH A BUREO NETPLUS® VISOR MADE FROM RECYCLED FISHING NETS
- SWEATBAND IS BUILT WITH MOISTURE WICKING PROPERTIES, TO KEEP YOU FRESH AND COOL.
- ADJUSTABLE SNAPBACK CLOSURE



**KHAKE/KHAKI
11656-KHKHI



**BLACK/BLACK
11656-BKBLK



PINECONE BROWN/OFF WHITE
11656-PNBOW

CREST NETPLUS TRUCKER HAT

MEDIUM PROFILE = STRUCTURED
6-PANEL CURVED BILL
O/S

\$17.50/\$35



DELIVERY I

- 57% POLYESTER 43% ORGANIC COTTON
- MERROWED-EDGE EMBROIDERED PATCH
- MESH BACK
- BUILT WITH A BUREO NETPLUS® VISOR MADE FROM RECYCLED FISHING NETS
- SWEATBAND IS BUILT WITH MOISTURE WICKING PROPERTIES, TO KEEP YOU FRESH AND COOL.
- ADJUSTABLE SNAPBACK CLOSURE



*BLACK/BLACK
10921-BKBLK



VETIVER/KHAKI
10921-VTVKH

CREST NETPLUS SNAPBACK

MEDIUM PROFILE = STRUCTURED
5-PANEL CURVED BILL
O/S

\$20/\$40



DELIVERY I

- 85% ACRYLIC 15% WOOL (BLACK, HTGBK)
- 100% COTTON (WSHNC)
- MERROWED-EDGE EMBROIDERED PATCH
- CORDUROY (WASHED NAVY CORD)
- BUILT WITH A BUREO NETPLUS® VISOR MADE FROM RECYCLED FISHING NETS
- SWEATBAND IS BUILT WITH MOISTURE WICKING PROPERTIES, TO KEEP YOU FRESH AND COOL.
- ADJUSTABLE SNAPBACK CLOSURE



*HEATHER GREY/BLACK
11001-HTGBK



**BLACK
11001-BLACK



WASHED NAVY CORD
11001-WSHNC

LINWOOD NETPLUS SNAPBACK

MEDIUM PROFILE = STRUCTURED
5-PANEL CURVED BILL
O/S

\$20/\$40



DELIVERY I

- 85% ACRYLIC 15% WOOL (BLWBL), 100% COTTON (DNMRS)
- MERROWED-EDGE EMBROIDERED PATCH
- BUILT WITH A BUREO NETPLUS® VISOR MADE FROM RECYCLED FISHING NETS
- SWEATBAND IS BUILT WITH MOISTURE WICKING PROPERTIES, TO KEEP YOU FRESH AND COOL.
- ADJUSTABLE SNAPBACK CLOSURE



*BLACK/WHITE/BLACK
10980-BLWBL



DENIM RINSE
10980-DNMRS

CREST NETPLUS UTILITY SNAPBACK

MEDIUM PROFILE = STRUCTURED
6-PANEL CURVED BILL
O/S

\$20/\$40



DELIVERY I

- 97% POLYESTER 3% ELASTANE
- MERROWED-EDGE WOVEN LABEL
- MOISTURE WICKING STRETCH FABRIC
- LASER CUT REAR PANELS FOR MAXIMUM BREATHABILITY
- BUILT WITH A BUREO NETPLUS® VISOR MADE FROM RECYCLED FISHING NETS
- SWEATBAND IS BUILT WITH MOISTURE WICKING PROPERTIES, TO KEEP YOU FRESH AND COOL.
- ADJUSTABLE SNAPBACK CLOSURE



*BLACK
10730-BLACK



*WASHED NAVY
10730-WANAV

ALPHA NETPLUS ADJUSTABLE HAT

LOW PROFILE = UNSTRUCTURED
6-PANEL CURVE BILL
O/S

\$20/\$40



- 100% COTTON
- DIRECT EMBROIDERY
- LIGHT RINSE WASH
- BUILT WITH A BUREO NETPLUS® VISOR MADE FROM RECYCLED FISHING NETS
- SWEATBAND IS BUILT WITH MOISTURE WICKING PROPERTIES, TO KEEP YOU FRESH AND COOL.
- ADJUSTABLE SELF FABRIC CLOSURE



**BLACK/WHITE RINSE
11776-BLKWR



*OLIVE/OLIVE RINSE
11776-OLOLR



*SAND/SAND RINSE
11776-SDSDR

DELIVERY I

ALPHA ADJUSTABLE HAT

LOW PROFILE = UNSTRUCTURED
6-PANEL CURVE BILL
O/S

\$22.50/\$45

DELIVERY I

- 100% POLYESTER
- DIRECT EMBROIDERY
- HERRINGBONE
- ADJUSTABLE SELF FABRIC CLOSURE



BROWN/KHAKI HERRINGBONE
10731-BRNKH

PARSONS ADJUSTABLE HAT

LOW PROFILE = UNSTRUCTURED
6-PANEL CURVE BILL
O/S

\$22.50/\$45

DELIVERY I

- 90% POLYESTER 10% WOOL (SNDBH), 100% COTTON (BKCRD)
- MERROWED-EDGE EMBROIDERED PATCH
- LIGHT WEIGHT DENIM (DENIM)
- CORDUROY (WOODSMOKE, BLACK)
- HOUNDSTOOTH (SAND/BLACK)
- ADJUSTABLE LEATHER STRAP CLOSURE



BLACK CORD
11225-BKCRD



SAND/BLACK HOUNDSTOOTH
11225-SNDBH

WOODBURN NETPLUS ADJUSTABLE HAT

LOW PROFILE = UNSTRUCTURED
6-PANEL CURVE BILL
O/S

\$20/\$40

DELIVERY I



- 100% COTTON
- WOVEN LABEL
- TREATED WITH A VINTAGE WASH FOR A SOFT HAND AND LIVED IN LOOK (BLACK)
- CORDUROY (EMERALD)
- BUILT WITH A BUREO NETPLUS® VISOR MADE FROM RECYCLED FISHING NETS
- SWEATBAND IS BUILT WITH MOISTURE WICKING PROPERTIES, TO KEEP YOU FRESH AND COOL.
- ADJUSTABLE SELF FABRIC CLOSURE



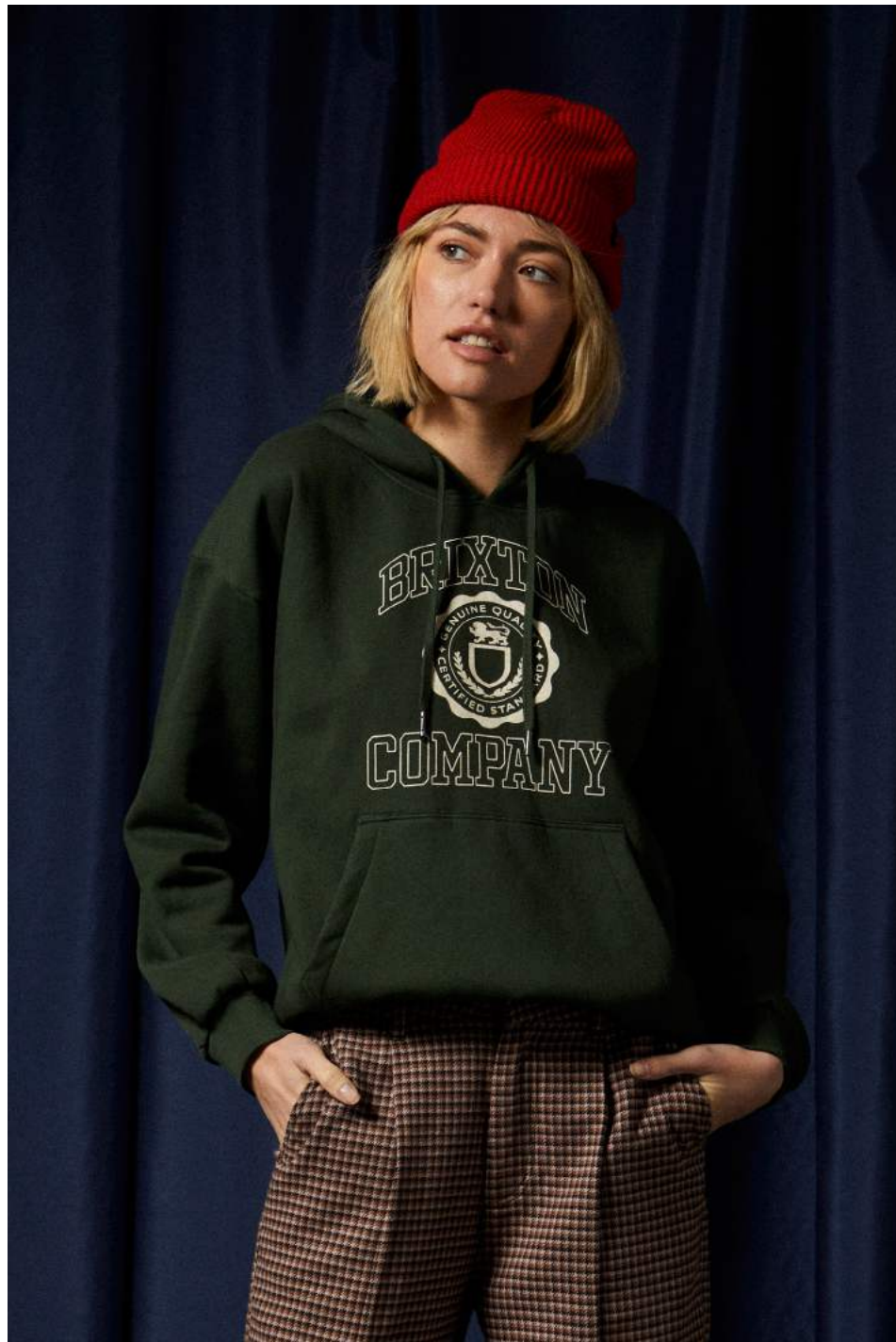
*BLACK VINTAGE WASH
11588-BLKVW



EMERALD CORD
11588-EMRDC



BEANIES



HEIST BEANIE



CONTINENTAL CABLE KNIT BEANIE

CONTINENTAL CABLE KNIT BEANIE

HEIGHT WITH CUFF UP: 8.5
 OPENING: 7
 O/S

- 70% WOOL 30% ACRYLIC
- CLASSIC FISHERMAN'S BEANIE IN A CABLE KNIT
- ACRYLIC/WOOL BLEND
- LEATHER FOLD LABEL
- CABLE KNIT

\$22.50/\$45



OATMEAL
 11682-OATML



BLACK
 11682-BLACK

DELIVERY I

WHITTIER BEANIE

HEIGHT WITH CUFF UP: 9
 OPENING: 7
 O/S

- 60% POLYLANA 40% ACRYLIC
- CLASSIC FISHERMAN'S BEANIE WITH A HIGH CUFF
- POLYLANA® FIBER OFFERS THE SOFTNESS OF SYNTHETIC WOOL WITH MINIMAL ENVIRONMENTAL IMPACT, BEING VERSATILE, TRACEABLE, AND FULLY RECYCLABLE
- WOVEN LABEL

\$17.50/\$35



BLACK
 11683-BLACK



SAND
 11683-SAND

DELIVERY I

MARLED CHUNKY BEANIE

HEIGHT WITH CUFF UP: 8
 OPENING: 7
 O/S

- 100% ACRYLIC
- CLASSIC FISHERMAN'S BEANIE IN A CHUNKY KNIT
- LEATHER FOLD LABEL
- 2X2 CHUNKY KNIT

\$17.50/\$35



*COFFEE/CHOCOLATE
 11684-COFCH



*MILITARY OLIVE/CHARCOAL
 11684-MIOCH

DELIVERY I



HEIST BEANIE

GRADE WAFFLE KNIT BEANIE

HEIGHT WITH CUFF UP: 8
 OPENING: 7
 O/S

- 100% ACRYLIC
- CLASSIC FISHERMAN'S BEANIE IN A WAFFLE KNIT
- MERROWED-EDGE EMBROIDERED PATCH

\$15/\$30

DELIVERY I



*BLACK
11681-BLACK



*MILITARY OLIVE
11681-MIOL



RUST ORANGE
11681-RSTOG

WOODBURN WATCH CAP BEANIE

HEIGHT WITH CUFF UP: 8.5
 OPENING: 7
 O/S

- 100% ACRYLIC
- CLASSIC FISHERMAN'S BEANIE
- WOVEN LABEL
- 1X1 KNIT

\$15/\$30

DELIVERY I



**EMERALD
11508-EMRLD



**WASHED BLACK
11508-WABLK



**BISCOTTI
11508-BSCTI



**RUST ORANGE
11508-RSTOG



**ROSE GOLD
11508-ROSGD



**NAVY
11508-NAVY

HEIST BEANIE

HEIGHT WITH CUFF UP: 8
OPENING: 7
O/S

- 100% ACRYLIC
- CLASSIC FISHERMAN'S BEANIE
- WOVEN FOLD LABEL
- 1X1 KNIT

\$12.50/\$25



**COYOTE BROWN
10782-COYOT



**DARK DENIM
10782-DKDEN



**WOODSMOKE
10782-WODSK



**MILITARY OLIVE
10782-MILOL



**COPPER
10782-COPPR



**DARK FOREST
10782-DRKFO



**BEIGE
10782-BEIGE



**BLACK
10782-BLACK



**HEATHER GREY
10782-HTGRY



**SAUTERNE YELLOW
10782-STRYW



**RED
10782-RED



**DUSK
10782-DUSK



**WHITE
10782-WHITE



**BROWN
10782-BROWN



DELIVERY I



DONE PROPER FEDORA TRAVEL CASE

O/S

\$90/\$180

- 100% ETHYLENE VINYL ACETATE
- 32 LITERS
- LEATHER PATCH DETAILS
- FITS MOST WIDE BRIM HATS
- DWR AND SCOTCHGUARD COATINGS



**CREAM/BEIGE
05509-CRMBG



**GREY/BLACK
05509-GYBLK

DELIVERY I

HAT BRUSH

O/S

\$10/\$20

- 100% WOOD
- BRIXTON LOGO
- NYLON WEBBING



**BLACK
05378-BLACK

DELIVERY I

PROPER HAT CLIP

O/S

\$15/\$30

- 100% METAL
- WORKS ON ALL BRIXTON HEADWEAR
- CARABINER CLIP



**SAND
05541-SAND



**BLACK
05541-BLACK

DELIVERY I



BRIXTON HAT FEATHER

O/S

• 100% BIRD FEATHER

\$5/\$10



**WHITE/BLACK
05515-WHBLK



**BISON/MOJAVE/BURNT ORANGE
05515-BSMBO



**BURNT ORANGE/BLACK/MAHOGANY
05515-BTOBM

DELIVERY I

ADJUSTABLE LEATHER HAT BAND

O/S

• 100% LEATHER
• WORKS ON ALL BRIXTON FEDORAS
• TIE BACK
• METAL HEADWEAR PLAQUE

\$20/\$40



*NATURAL
05546-NATUR



*BLACK
05546-BLACK

DELIVERY I

ADJUSTABLE BEADED HAT BAND

O/S

• 90% POLYESTER 10% LEATHER
• WORKS ON ALL BRIXTON FEDORAS

\$25/\$50



*WHITE/NATURAL
05564-WHTNR



*RED/BLACK
05564-RDBLK

DELIVERY I

THE TRAVELER COLLECTION



BUILT-IN HAT CLIP

TRAVELER BACKPACK

O/S - 23 LITERS |
18.5" x 11" x 7.5"

\$90/\$180

- 12 OUNCE PARAFFIN WAXED 100% COTTON CANVAS, 100% POLYESTER LINER
- FRONT BRIXTON CUSTOM HAT CLIP. HAT CLIP CAN HOLD ALMOST ANY BRIXTON HEADWEAR STYLE AND SIZE
- LARGE MAIN COMPARTMENT WITH SUSPENDED PADDED LAPTOP SLEEVE – FITS UP TO A 16" LAPTOP
- INTERIOR HANGING MESH ZIP POCKET TO ORGANIZE SMALL ITEMS INSIDE BACKPACK
- TWO LARGE EASY ACCESS QUICK STASH FRONT COMPARTMENTS
- TWO EXPANDABLE WATER BOTTLE POCKETS
- ERGONOMICALLY SHAPED STRAPS WITH BREATHABLE MESH
- LUGGAGE HANDLE SLIP PANEL FOR STACKED TRAVEL
- DURABLE METAL ZIPPERS AND HARDWARE



**OLIVE BROWN
05548-OLVBN

DELIVERY |

TRAVELER XL WEEKENDER DUFFLE

O/S - 50 LITERS |
23.6" X 11" X 11.8"

\$135/\$270

- 12 OUNCE PARAFFIN WAXED 100% COTTON CANVAS, 100% POLYESTER LINER
- FRONT BRIXTON CUSTOM HAT CLIP. HAT CLIP CAN HOLD ALMOST ANY BRIXTON HEADWEAR STYLE AND SIZE
- LARGE MAIN COMPARTMENT WITH FULL ACCESS, WIDE MOUTH OPENING EXPAND CAPACITY BY DETACHING SIDE SNAPS
- MULTIPLE CARRY OPTIONS: LARGE TOTE HANDLES OR DETACHABLE PADDED CROSS-BODY STRAP
- TWO FRONT ZIPPED FLAT POCKETS FOR QUICK STASH ITEMS
- PADDED FRONT, BACK, AND BOTTOM WALLS HELPS PROTECT CONTENTS
- LARGE INTERIOR ZIPPED POCKET CAN SEPARATE DIRTY AND CLEAN ITEMS
- DURABLE METAL ZIPPERS AND HARDWARE



**OLIVE BROWN
05549-OLVBN

DELIVERY |

TRAVELER DOPP KIT

O/S - 4 LITERS |
9.8" x 4.7" x 5"

\$40/\$80

- 12 OUNCE PARAFFIN WAXED 100% COTTON CANVAS, 100% POLYESTER LINER
- LARGE MAIN COMPARTMENT WITH FULL ACCESS, WIDE MOUTH OPENING
- SIDE GRAB HANDLE FOR EASY CARRY
- ZIPPED WATERPROOF COMPARTMENT TO SEPARATE TOILETRIES
- PADDED SIDE AND BOTTOM WALLS TO HELP PROTECT CONTENTS
- DURABLE METAL ZIPPERS AND HARDWARE



**OLIVE BROWN
05550-OLVBN

DELIVERY |

COMMUTER BACKPACK

O/S - 26.7 LITERS |
20.9" X 11" X 7.1"

\$75/\$150

- DURABLE TARPULIN, 1680D NYLON, CUSTOM HERRINGBONE LINER
- FRONT BRIXTON CUSTOM HAT CLIP. HAT CLIP CAN HOLD ALMOST ANY BRIXTON HEADWEAR STYLE AND SIZE
- LARGE ZIPPED MAIN COMPARTMENT WITH WATER RESISTANT PROTECTIVE LID
- BREATHABLE AIRMESH BACK PANEL WITH LUGGAGE HANDLE SLIP PANEL TO STACK BACKPACK ON LUGGAGE WHILE TRAVELING
- ERGONOMICALLY SHAPED BACKPACKS STRAPS WITH BREATHABLE AIRMESH AND STERNUM STRAP
- SIDE STRETCH WATER BOTTLE POCKET
- FRONT ACCESS ZIPPED POCKET FOR QUICK STASH ITEMS
- INTERIOR HANGING MESH ZIP POCKET TO ORGANIZE SMALL ITEMS INSIDE BACKPACK
- INTERIOR SUSPENDED PADDED LAPTOP SLEEVE – FITS UP TO A 16" LAPTOP
- PADDED BOTTOM CONSTRUCTION TO PROTECT CONTENTS
- DURABLE METAL ZIPPERS AND HARDWARE
- TOP GRAB HANDLE



**BLACK
05553-BLACK

DELIVERY |

COMMUTER WEEKENDER DUFFLE

O/S - 50 LITERS |
23.6" X 11" X 11.8"

\$95/\$190

- DURABLE TARPULIN, 1680D NYLON, CUSTOM HERRINGBONE LINER
- FRONT BRIXTON CUSTOM HAT CLIP. HAT CLIP CAN HOLD ALMOST ANY BRIXTON HEADWEAR STYLE AND SIZE
- SKATEBOARD STRAPS ON BOTTOM OF BAG
- LARGE 50/50 SPLIT ZIPPED MAIN COMPARTMENT
- SIDE COMPRESSION STRAPS TO CINCH
- FRONT QUICK STASH ZIPPED POCKET WITH STORM FLAP FOR WEATHER RESISTANCE
- MULTIPLE CARRY OPTIONS: PADDED TOTE HANDLES OR DETACHABLE PADDED CROSS-BODY STRAP
- MULTIPLE GRAB HANDLES FOR EASY GRAB-AND-GO
- PADDED BOTTOM CONSTRUCTION TO PROTECT CONTENTS
- INTERIOR LARGE ZIPPED MESH PANEL TO KEEP UPPER COMPARTMENT SEPARATED FROM THE LOWER COMPARTMENT
- DURABLE METAL ZIPPERS AND HARDWARE
- INTERIOR COMPRESSION STRAPS TO SECURE LOAD IN LOWER COMPARTMENT



**BLACK
05554-BLACK

DELIVERY |

COMMUTER TECH CASE

O/S - 3 LITERS |
9.8" x 6" x 3.1"

\$35/\$70

- DURABLE TARPULIN, 1680D NYLON, CUSTOM HERRINGBONE LINER
- LARGE MAIN COMPARTMENT WITH FULL ACCESS "BUTTERFLY" STYLE ZIPPER OPENING
- MULTIPLE STRETCH MESH INTERIOR ORGANIZER POCKETS WITH KEY FOB
- LARGE ZIPPED INTERIOR MESH POCKET FOR EASY ORGANIZATION
- QUICK GRAB SIDE HANDLE
- DURABLE METAL ZIPPERS AND HARDWARE
- SLIM DESIGN TO SLIDE EASILY IN AND OUT OF BAG



**BLACK
05555-BLACK

DELIVERY |

UNIVERSITY BACKPACK

O/S - 19 LITERS |
17.5" x 11.5" x 6"

\$40/\$80

- FRONT BRIXTON CUSTOM HAT CLIP. HAT CLIP CAN HOLD ALMOST ANY BRIXTON HEADWEAR STYLE AND SIZE
- LARGE ZIPPERED MAIN COMPARTMENT
- ERGONOMICALLY SHAPED BACKPACKS STRAPS
- SIDE STRETCH WATER BOTTLE POCKET
- FRONT ACCESS ZIPPERED POCKET FOR QUICK STASH ITEMS
- INTERIOR SUSPENDED PADDED LAPTOP SLEEVE - FITS UP TO A 16" LAPTOP
- DURABLE METAL ZIPPERS AND HARDWARE
- TOP GRAB HANDLE



**BLACK
05556-BLACK



**DARK BRICK
05556-DRBRK



**OLIVE SURPLUS
05556-OLVSP

DELIVERY I

TRADITIONAL LEATHER WALLET

\$45/\$90

- 100% LEATHER
- LOW PROFILE CONSTRUCTION MINIMIZES WALLET BULK
- SIX INTERIOR CARD POCKETS
- LARGE BILL POCKET
- EXTERIOR SLIP POCKET FOR QUICK STASH ITEMS LIKE RECEIPTS, ETC.



**BROWN
05551-BROWN



**BLACK
05551-BLACK

DELIVERY I

TRADITIONAL CARD HOLDER

\$40/\$80

- 100% LEATHER
- LOW PROFILE CONSTRUCTION MINIMIZES WALLET BULK
- MAIN COMPARTMENT POCKET CAN FIT MULTIPLE CARDS
- TWO EXTERIOR SLIP POCKETS FOR CARDS AND RECEIPTS



**BROWN
05552-BROWN



**BLACK
05552-BLACK

DELIVERY I

STRETCH WEB BELT

O/S

\$30/\$60

- 55% COTTON 23% POLYESTER 22% SPANDEX
- BOTTLE OPENER BEHIND FRONT BUCKLE
- STRETCH BELT FOR COMFORT AND PERFECT FIT
- METAL CAM-LOCK STYLE BUCKLE ALLOWS FOR EASY ADJUSTMENT
- CUT TO LENGTH SIZING (DETACH WEBBING FROM BUCKLE, CUT TO DESIRED LENGTH, RE-ATTACH TO BUCKLE)



**BLACK
05557-BLACK



**OLIVE SURPLUS
05557-OLVSP

DELIVERY I



BABY HEIST BEANIE

O/S

\$10/\$20

- 100% ACRYLIC
- WOVEN FOLD LABEL
- 1X1 KNIT



*BLACK
11207-BLACK



*LIGHT HEATHER GREY
11207-LHTGY



*MUSTARD
11207-MUSTR



*JOE BLUE
11207-JOBLU



*MILITARY OLIVE
11207-MILOL



*ATHLETIC ORANGE
11207-ATHOR

DELIVERY I

BABY FIDDLER CAP

O/S

\$25/\$50

- 100% COTTON
- DIRECT EMBROIDERY



*BLACK
11223-BLACK

DELIVERY I

BABY BROOD SNAP CAP

O/S

\$25/\$50

- 100% COTTON
- DIRECT EMBROIDERY



*BLACK
11111-BLACK



*BROWN/KHAKI
11111-BRKHK

DELIVERY I

BABY MESSER FEDORA

O/S

\$30/\$60

- 100% WOOL FELT
- FAUX LEATHER BAND
- LIGHT STIFFNESS
- DEBOSSED CREST



*BLACK
11220-BLACK

DELIVERY I

MEN'S APPAREL





**MENSWEAR MEETS UTILITY,
THE NEW JACKET LINEUP.**

NEW STYLES AND NEW MATERIALS FOR THIS HOLIDAY.



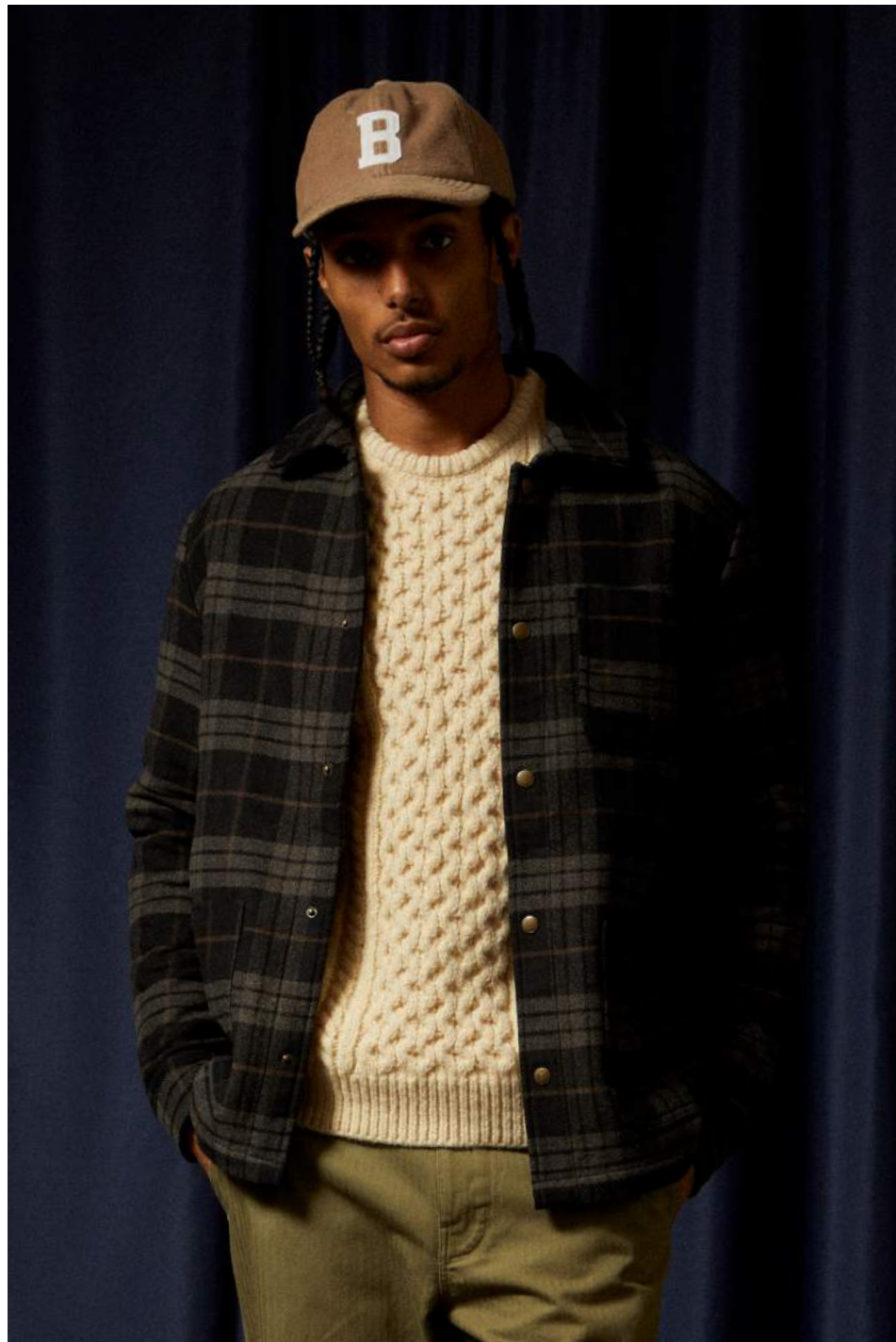
**CASS MENSWEAR
JACKET**



**SHOP MENSWEAR
CHORE COAT**



**DILLINGER HOUNDSTOOTH
BOMBER JACKET**



SHOP MENSWEAR CHORE COAT



DILLINGER HOUNDSTOOTH BOMBER JACKET

SHOP MENSWEAR CHORE COAT

STANDARD
S-XXL

- 54% POLYESTER 36% WOOL 10% OTHERS
- 20'S INSPIRED WORKWEAR JACKET
- 480 GRAM WOOL BLEND
- INTERIOR CORDUROY COLLAR STAND
- CENTER FRONT SNAP CLOSURE
- UTILITY CHEST POCKET
- TWO LOWER PATCH POCKETS
- WOVEN LABEL

\$75/\$150



BLACK/CHARCOAL PLAID
03443-BKCHP

DELIVERY I

DILLINGER HOUNDSTOOTH BOMBER JACKET

STANDARD
S-XXL

- 98% COTTON 2% SPANDEX
- MILITARY INSPIRED FLIGHT JACKET IN A MENSWEAR TEXTILE
- YARN DYED HOUNDSTOOTH
- WELT POCKETS
- RIBBED DETAILS AT THE CUFF AND BOTTOM OPENING
- VEGAN LEATHER PATCH

\$80/\$160



*BLACK HOUNDSTOOTH
03440-BKHST

DELIVERY I

DURHAM SHERPA LINED JACKET

RELAXED
S-XXL

- WNYBP - HEAVY WEIGHT SIGNATURE ANTI-SCRATCH, WOOL FREE, VEGAN FLANNEL - 370 GRAMS
- BKHGB - CUSTOM YARN DYED STRETCH HERRINGBONE - 270 GRAMS
- SHERPA LINING FOR ADDED WARMTH
- 325 GRAM SHERPA LINING
- WELT POCKETS
- CENTER FRONT UTILITY POCKETS
- VEGAN LEATHER PATCH

\$85/\$170

- 60% POLYESTER 40% ACRYLIC (BKHGB)
- 100% COTTON (WNYBP)
- VINTAGE INSPIRED LINED WORK-SHIRT JACKET

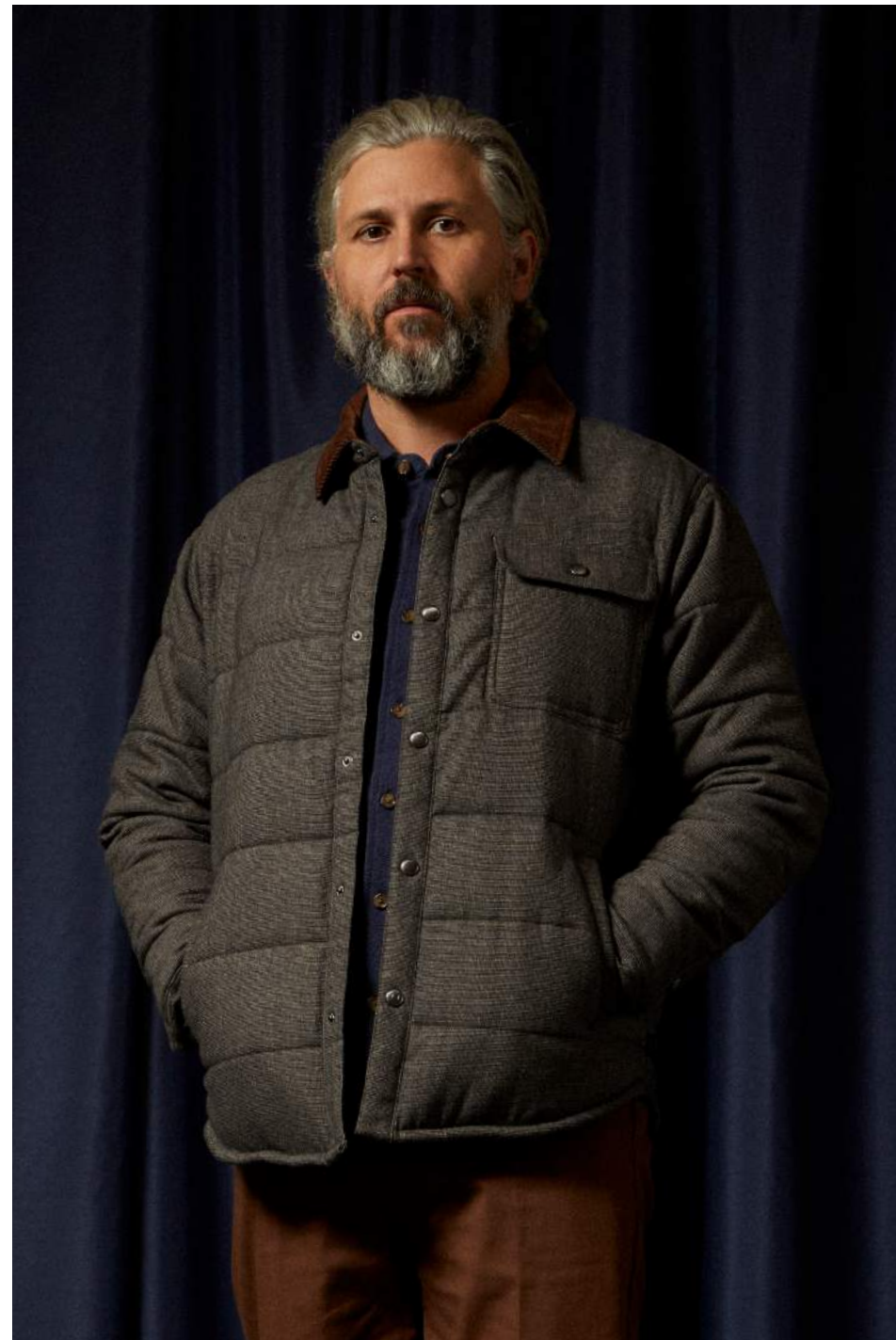


*BLACK HERRINGBONE
03362-BKHGB



*WASHED NAVY/BEIGE PLAID
03362-WNYBP

DELIVERY I



CASS MENSWEAR JACKET

CASS MENSWEAR JACKET

STANDARD
S-XXL

\$75/\$150

- 59% COTTON 29% POLYESTER 18% ACRYLIC 2% SPANDEX
- MILITARY INSPIRED QUILTED JACKET IN A MENSWEAR TEXTILE
- INTERIOR TAFFETA LINING
- ANTI-SCRATCH, WOOL FREE, VINTAGE TWEED
- 200 GSM SYNTHETIC FLL FOR ADDED WARMTH
- VEGAN LEATHER PATCH
- ELASTIC SLEEVE OPENING
- LEFT CHEST UTILITY POCKET WITH SNAP CLOSURE



*MIXED TWEED
03441-MXTWD

DELIVERY I

CASS WAXED CANVAS JACKET

STANDARD
S-XXL

\$125/\$250

- 100% COTTON
- MILITARY INSPIRED QUILTED JACKET IN A WAXED CANVAS
- 240 GSM WAXED CANVAS COATING FOR ADDED WEATHER PROTECTION
- 200 GSM PRIMALOFT FILL INSULATION WHICH OFFERS WARMTH, SOFTNESS, AND LIGHT WEIGHT COMFORT
- ELASTIC SLEEVE OPENING
- LEFT CHEST UTILITY POCKET WITH SNAP CLOSURE
- WELT POCKET WITH ZIPPER CLOSURE
- INTERIOR POCKET
- VEGAN LEATHER PATCH



OLIVE SURPLUS
03419-OLVSP

DELIVERY I

CASS JACKET

STANDARD
S-XXL

- 100% COTTON
- MILITARY INSPIRED QUILTED JACKET
- PA COATING FOR ADDED WEATHER PROTECTION
- TGREY + BKBLK - 75 GSM POLYESTER RIPSTOP
- CNDGC- 260 GRAM 14 WALE CORDUROY
- INTERIOR TAFFETA LINING
- BLACK/BLACK, TIGER'S EYE 160 GSM SYNTHETIC FLL FOR ADDED WARMTH
- CINDERY GREY - 200 GSM SYNTHETIC FLL FOR ADDED WARMTH
- ELASTIC SLEEVE OPENING
- LEFT CHEST UTILITY POCKET WITH SNAP CLOSURE



\$60/\$120

*BLACK/BLACK
03287-BKBLK



\$60/\$120

*TIGER'S EYE
03287-TGREY



\$65/\$130

CINDER GREY CORD
03287-CNDGC

DELIVERY I



DILLINGER FLIGHT BOMBER JACKET

CLAXTON PARSONS ARCTIC FLEECE LINED JACKET
STANDARD
S-XXL

\$55/\$110



DELIVERY I

- 100% POLYESTER
- STANDARD COACHES JACKET
- LIGHT WEIGHT WIND REPELLANT SHELL
- 75 GSM
- DWR COATING FOR ADDED WEATHER PROTECTION
- ARCTIC FLEECE LINED FOR ADDED WARMTH
- ADJUSTABLE DRAWCORDS AT THE HOOD AND WAIST
- ELASTIC WRISTS AND WAIST
- EMBROIDERED LEFT CHEST PATCH



BLACK
03437-BLACK



TOBACCO BROWN
03437-TBCBN

DILLINGER FLIGHT BOMBER JACKET
STANDARD
S-XXL

\$70/\$140



DELIVERY I

- 100% POLYESTER
- MILITARY INSPIRED FLIGHT JACKET
- WIND PROTECTIVE POLYESTER RIBSTOP
- DWR COATING FOR ADDED WEATHER PROTECTION
- INTERIOR TAFFETA LINING
- 200 GSM SYNTHETIC FILL FOR ADDED WARMTH
- WELT POCKETS
- RIBBED DETAILS AT THE CUFF AND BOTTOM OPENING
- SIDESEAM FLAG LABEL



*BLACK
03439-BLACK



*CYPRESS GREEN
03439-CYPGN



CABLE SHERPA LINED TRUCKER JACKET

DURHAM FELTED STRETCH JACKET

RELAXED
S-XXL

\$80/\$160

- 100% POLYESTER
- VINTAGE INSPIRED WORK-SHIRT JACKET
- SIGNATURE ANTI-SCRATCH, STRETCH FELTED KNIT
- 445 GSM
- STRETCH CONSTRUCTION FOR COMFORT AND MOBILITY
- WELT POCKETS
- CENTER FRONT UTILITY POCKETS
- VEGAN LEATHER PATCH



DELIVERY I



*BLACK
03423-BLACK



*VETIVER
03423-VETVR

BUILDERS DURHAM WAXED CANVAS FLANNEL LINED JACKET

RELAXED
S-XXL

\$125/\$250

- CORDURA FABRIC IS A PREMIUM TEXTILE THAT'S USE EXPANDS OVER 70 YEARS. IT IS BUILT TO LAST, HAS HIGH TENSILE STRENGTH FIBERS, AND WILL WITHSTAND LONG TERM WEAR. THIS WAXED CANVAS FABRIC WILL STAND THE TEST OF TIME AS WELL AS THE ELEMENTS

- 68% COTTON 30% NYLON 2% SPANDEX
- VINTAGE INSPIRED WORK-SHIRT JACKET
- ULTRA DURABLE CORDURA WAXED CANVAS
- 340 GSM
- INTERIOR QUILTED FLANNEL LINING
- 150 GSM
- CORDUROY COLLAR
- SNAP BUTTONS
- VEGAN LEATHER PATCH



*WASHED BLACK
03446-WABLK

DELIVERY I

CABLE SHERPA LINED TRUCKER JACKET

STANDARD
S-XXL

\$100/\$200

- 100% COTTON
- CLASSIC TRUCKER JACKET
- 305 GRAM DURABLE 8 WALE CORDUROY
- SHERPA LINED AND COLLAR FOR ADDED WARMTH
- CENTER FRONT SHANK CLOSURE
- UTILITY CHEST POCKETS
- CENTER FRONT ZIPPER AND BUTTON CLOSURE
- WELT POCKETS AND INTERIOR POCKET WITH ZIPPER
- REINFORCED BUTTON CLOSURE
- INTERIOR PATCH POCKETS
- REINFORCED STITCHING



PINECONE BROWN
03444-PNCBN

DELIVERY I



SELDEN SOFT BRUSHED FLANNEL OVERSHIRT
SELDEN OVERSHIRT



SELDEN OVERSHIRT

SELDEN OVERSHIRT

RELAXED FIT
S-XXL

\$55/\$110

- 59% COTTON 29% POLYESTER 18% ACRYLIC 2% SPANDEX (MXTWD)
- 98% COTTON/2% ELASTANE (BKHST)
- THE ORIGINAL WORK-SHIRT IN RANGE OF MENSWEAR TEXTILES
- STRETCH YARN DYE MENSWEAR HOUNDSTOOTH (BKHST)
- ANTI-SCRATCH, WOOL FREE, VINTAGE TWEED (MXTWD)
- LEFT CHEST POCKET
- SIDESEAM FLAG LABEL
- STRAIGHT HEM



BLACK HOUNDSTOOTH
01416-BKHST



MIXED TWEED
01416-MXTWD

DELIVERY 1

SELDEN SOFT BRUSHED FLANNEL OVERSHIRT

RELAXED
S-XXL

\$65/\$130

- 100% POLYESTER
- THE ORIGINAL WORK-SHIRT IN A ULTRA SOFT BRUSHED FAUX WOOL
- LEFT CHEST POCKET
- REINFORCED METAL SNAP BUTTON CLOSURE
- SIDESEAM FLAG LABEL
- STRAIGHT HEM



BLACK/CHARCOAL
01436-BKCHR



TAN/BISON
01436-TNBSN

DELIVERY 1



BOWERY HEAVYWEIGHT FLANNEL



BUILDERS BOWERY STRETCH WATER RESISTANT FLANNEL





THE BOWERY LINEUP

INTRODUCING NEW COLD WEATHER STYLES AND MATERIALS IN OUR CLASSIC SIHOUETTE THIS WINTER. FROM FLEECE TO STRETCH WE CONTINUE THE QUALITY, COMFORT AND TRADITION THE BOWERY IS KNOWN FOR.



BOWERY QUILTED FLANNEL

STANDARD
S-XXL

- 100% COTTON
- THE QUILTED VERSION OF OUR ORIGINAL FLANNEL BUILT TO COMBAT THE COLD
- 175 GSM
- QUILTED LINING FOR ADDED WARMTH
- TREATED WITH WASH FOR A SOFT HAND FEEL
- CUSTOM YARN-DYE FLANNEL PATTERN
- CHEST POCKETS WITH WOVEN LABEL



BRIGHT RED/MAHOGANY
01418-BTRMH

WOODSMOKE/BLACK
01418-WDSKB

\$65/\$130

DELIVERY 1



BOWERY HEAVYWEIGHT FLANNEL

STANDARD
S-XXL

- 100% COTTON
- THE HEAVY WEIGHT VERSION OF OUR ORIGINAL FLANNEL BUILT TO COMBAT THE COLD
- 370 GSM
- TREATED WITH WASH FOR A SOFT HAND FEEL
- CUSTOM YARN-DYE FLANNEL PATTERN
- CHEST POCKETS WITH LEATHER LABEL



*BLACK/CHARCOAL
01297-BKCHR

OFF WHITE/CINDER GREY
01297-OFWCG

CYPRESS GREEN/ BLACK
01297-CYPBK

\$50/\$100

DELIVERY 1



BUILDERS BOWERY STRETCH WATER RESISTANT FLANNEL

STANDARD
S-XXL

- 58% COTTON 22% ACRYLIC 18% RECYCLED POLYESTER 2% SPANDEX
- A WORKWEAR-INSPIRED FLANNEL WITH STRETCH AND A WATER REPELLANT COATING, INFLUENCED BY OUR ORIGINAL BOWERY DESIGN
- 265 GSM
- WATER RESISTANT COATING FOR ADDED WEATHER PROTECTION
- STRETCH CONSTRUCTION FOR COMFORT AND MOBILITY
- REINFORCED METAL SNAP BUTTON CLOSURE
- REINFORCED STRUCTURAL FELL SEAMS
- REFLECTIVE LOCKER LOOP
- TREATED WITH WASH FOR A SOFT HAND FEEL
- CUSTOM YARN-DYE FLANNEL PATTERN
- CHEST POCKETS WITH WOVEN LABEL AND PENCIL HOLDER
- INTERIOR CORDUROY COLLAR STAND



*BLACK/CHARCOAL/BEIGE
01430-BKCBG

WASHED NAVY/BLACK/
CORONET BLUE
01430-WNBCB

WOODSMOKE/CORDOVAN RED/
WASHED BLACK
01430-WCRWB

\$60/\$120



DELIVERY I



BOWERY FLANNEL

STANDARD
S-XXL, 3XL-5XL

- 60% COTTON 23% POLYESTER 17% ACRYLIC
- THE ORIGINAL FLANNEL IN OUR SIGNATURE ANTI-SCRATCH, WOOL FREE, VEGAN TRI BLEND
- 230 GSM
- TREATED WITH WASH FOR A SOFT HAND FEEL
- CUSTOM YARN-DYE FLANNEL PATTERN
- CHEST POCKETS WITH WOVEN LABEL



*BLACK/CHARCOAL
01213-BKCHR

*HEATHER GREY/CHARCOAL
01213-HTGCH

BIJOUÉ BLUE/PINECONE
BROWN/WASHED NAVY
01213-BBPBW



WHITECAP/PINECONE
BROWN/BURRO BROWN
01213-WPBBB

VETIVER/LAUREL WREATH/
WASHED BLACK
01213-VLWWB

JOE BLUE PLAID
01213-JOBLP

DELIVERY I

\$40/\$80





BOWERY TEXTURED LOOP TWILL OVERSHIRT

STANDARD
S-XXL

- 100% COTTON
- THE ORIGINAL FLANNEL IN A TEXTURED LOOP TWILL
- 302 GSM
- TREATED WITH A GARMENT DYE FOR A SOFT HAND AND LIVED IN LOOK
- CHEST POCKET WITH A WOVEN LABEL



*BLACK
01379-BLACK

WASHED NAVY
01379-WANAV

\$45/\$90

DELIVERY I



BOWERY ARCTIC STRETCH FLEECE

STANDARD
S-XXL

- 75% RECYCLED POLYESTER 25% POLYESTER
- THE ORIGINAL FLANNEL IN A SOFT STRETCH ARCTIC FLEECE
- 220 GSM
- HIGH PILE (PLAIDS ONLY)
- LOW PROFILE SNAP CLOSURE
- CHEST POCKETS WITH VEGAN LEATHER PATCH



*BLACK
01221-BLACK

BURRO BROWN/BLACK PLAID
01221-BRBBP

CORDOVAN RED/WASHED NAVY PLAID
01221-CRWNP

\$47.50/\$95



DELIVERY I



CHIPPA AND DAYTEN FROM 50 WEIGHT FORCAST

PANTS THAT WORK

BUILDERS
5 POCKET

LEG OPENING: 16"
INSEAM: 32"

BUILDERS CARPENTER
STRETCH PANT

LEG OPENING: 18"
INSEAM: 31"





BUILDERS 5-CARPENTER STRETCH PANT

BUILDERS 5-POCKET PANT

REGULAR
28-38

\$50/\$100

- 64% COTTON 34% RECYCLED POLYESTER 2% ELASTANE (BLACK + WHEAT)
- 100% COTTON (RNSDN)
- CLASSIC 5 POCKET WORK PANT
- BUILDERS CUSTOM DURABLE CANVAS (BLACK, WHEAT)



DELIVERY I

- BUILDERS 11 OZ DURABLE HEAVY WEIGHT DENIM (RINSE DENIM)
- STRETCH CONSTRUCTION FOR COMFORT AND MOBILITY (BLACK, WHEAT)
- WATER RESISTANT COATING FOR ADDED WEATHER PROTECTION (BLACK, WHEAT)
- BUILT WITH REPVEE POLYESTER MADE FROM RECYCLED PLASTIC BOTTLES (BLACK, WHEAT)
- POCKET GUARD PROTECTION AGAINST CLIP TOOL
- REINFORCED RIVETED BELT LOOP
- REINFORCED STRUCTURAL FELL SEAMS
- 5 POCKET DETAIL
- LEG OPENING 16"
- INSEAM 32"



**BLACK
04917-BLACK



*RINSE DENIM
04917-RNSDN



*WHEAT
04917-WHEAT

BUILDERS CARPENTER STRETCH PANT

RELAXED
28-38

\$60/\$120

- 64% COTTON 34% RECYCLED POLYESTER 2% ELASTANE
- HARDWEARING DURABLE CARPENTER PANT
- BUILDERS CUSTOM DURABLE CANVAS
- STRETCH CONSTRUCTION FOR COMFORT AND MOBILITY



DELIVERY I

- WATER RESISTANT COATING FOR ADDED WEATHER PROTECTION
- BUILT WITH REPVEE POLYESTER MADE FROM RECYCLED PLASTIC BOTTLES
- POCKET GUARD PROTECTION AGAINST CLIP TOOL
- FRONT WELT POCKET, DOUBLE LAYER BACK POCKET, AND HIDDEN YOKE POCKET
- DOUBLE KNEE REINFORCEMENT
- DOUBLE LAYER FINISHING TO PROTECT AGAINST BOOT DAMAGE
- TRIPLE NEEDLE REINFORCED SEAMS
- HAMMER LOOP AND MULTI TOOL POCKETING
- LEG OPENING 18"
- INSEAM 31"



**WASHED BLACK
04920-WABLK



*PINECONE BROWN
04920-PNCBN



**BROADWAY HOUNDSTOOTH
E-WAIST RELAXED PANT**

**WAYPOINT HERRINGBONE RELAXED
CARGO PANT**
RELAXED
28-38

\$60/\$120

- 100% COTTON
- VINTAGE MILITARY CARGO PANT IN A MENSWEAR TEXTILE
- COTTON HERRINGBONE
- FIXED WAISTBAND
- FUNCTIONAL SIDE BELLOWED POCKETS
- REINFORCED STITCHING AND BAR TACK
- BUCKLE BUTTON
- DRAWCORDS AT HEM FOR A FULLY CUSTOMIZABLE LEG OPENING
- LEG OPENING 18"
- INSEAM 31"



***TOBACCO BROWN
04978-TBCBN**

DELIVERY I

**SURPLUS HERRINGBONE RELAXED
TROUSER PANT**
RELAXED
28-38

\$55/\$110

- 100% COTTON
- VINTAGE MILITARY INSPIRED TROUSER PANT
- COTTON HERRINGBONE
- FIXED WAISTBAND
- WELT BACK POCKETS
- HOLLYWOOD WAISTBAND
- LEG OPENING 18"
- INSEAM 31"



****OLIVE SURPLUS
04981-OLVSP**



**WASHED BLACK
04981-WBLK**

DELIVERY I

**BROADWAY HOUNDSTOOTH E-WAIST
RELAXED PANT**
RELAXED
S-XXL

\$50/\$100

- 98% COTTON 2% ELASTANE
- AN EASY TO WEAR VINTAGE MENSWEAR PANT
- STRETCH HOUNDSTOOTH
- VINTAGE WASH
- CENTER FRONT ADJUSTABLE DRAWCORDS
- WELT BACK POCKETS
- LEG OPENING 16"
- INSEAM 31"



***BROWN/CREAM HOUNDSTOOTH
30006-BCRH**

DELIVERY I

HOLIDAY 2024



SURPLUS TROUSER

A COMFORTABLE RELAXED FIT WITH MORE ROOM AT THE SEAT AND THIGH, WITH A SLIGHT TAPER TO THE LEG OPENING
LEG OPENING 18" | INSEAM 30.5"



CARPENTER PANT

A COMFORTABLE RELAXED FIT WITH MORE ROOM AT THE SEAT AND THIGH, WITH A SLIGHT TAPER TO THE LEG OPENING
LEG OPENING 18" | INSEAM 31"



BROADWAY ELASTIC WAIST

A CLASSIC MODERN REGULAR FIT THROUGH THE SEAT AND THIGH, WITH A SLIGHTLY LONGER RISE, STRAIGHT CUT FROM KNEE TO A TAPERED LEG OPENING.
LEG OPENING 16" | INSEAM 31"



RELAXED FIT

A COMFORTABLE FIT WITH MORE ROOM AT THE SEAT AND THIGH, WITH A SLIGHT TAPER TO THE LEG OPENING
LEG OPENING 18" | INSEAM 32"



REGULAR FIT

A CLASSIC MODERN REGULAR FIT THROUGH THE SEAT AND THIGH, WITH A STRAIGHT CUT FROM KNEE TO LEG OPENING.
LEG OPENING 16" | INSEAM 32"



SLIM FIT

A FITTED SLIM PANT THAT IS TAPERED THROUGH THE HIP TO THE LEG OPENING
LEG OPENING 14" | INSEAM 32"



CHOICE CHINO RELAXED PANT



CHOICE CHINO SLIM PANT

SLIM
28-38

\$40/\$80



DELIVERY I

- 60% COTTON 38% REPVEVE POLYESTER 2% SPANDEX
- MODERN TAKE ON A CLASSIC CHINO
- 310 GRAM DURABLE STRETCH TWILL
- MEDIUM RISE WITH A BUTTON BUCKLE CLOSURE
- STRETCH CONSTRUCTION FOR COMFORT AND MOBILITY
- REINFORCED RIVETED BELT LOOP
- BUILT WITH REPVEVE POLYESTER MADE FROM RECYCLED PLASTIC BOTTLES
- LEG OPENING 14"
- INSEAM 32"



*BLACK
04871-BLACK



*SAND
04871-SAND

CHOICE CHINO REGULAR PANT

REGULAR
28-38

- 60% COTTON 38% REPVEVE POLYESTER 2% SPANDEX
- 98% COTTON 2% ELASTANE (BKHST)
- MODERN TAKE ON A CLASSIC CHINO



DELIVERY I

- 310 GRAM DURABLE STRETCH TWILL
- YARN DYE MENSWEAR HOUNDSTOOTH (BLACK HOUNDSTOOTH)
- MEDIUM RISE WITH A BUTTON BUCKLE CLOSURE
- STRETCH CONSTRUCTION FOR COMFORT AND MOBILITY
- REINFORCED RIVETED BELT LOOP
- BUILT WITH REPVEVE POLYESTER MADE FROM RECYCLED PLASTIC BOTTLES (BLACK, KHAKI, OLIVE SURPLUS)
- LEG OPENING 16"
- INSEAM 32"



**BLACK
04888-BLACK \$40/\$80



**KHAKI
04888-KHAKI \$40/\$80



*OLIVE SURPLUS
04888-OLVSP \$40/\$80



*BLACK HOUNDSTOOTH
04888-BKHST \$50/\$100

CHOICE CHINO RELAXED PANT

RELAXED
28-38

- 59% COTTON 29% POLYESTER 18% ACRYLIC 2% SPANDEX (MXTWD)
- 60% COTTON 38% REPVEVE POLYESTER 2% SPANDEX (BLACK + PNCBN)
- MODERN TAKE ON A CLASSIC CHINO



DELIVERY I

- 310 GRAM DURABLE STRETCH TWILL (BLACK, PINECONE BROWN)
- ANTI-SCRATCH, WOOL FREE, VINTAGE TWEED (MIXED TWEED)
- MEDIUM RISE WITH A BUTTON BUCKLE CLOSURE
- STRETCH CONSTRUCTION FOR COMFORT AND MOBILITY
- REINFORCED RIVETED BELT LOOP
- BUILT WITH REPVEVE POLYESTER MADE FROM RECYCLED PLASTIC BOTTLES (BLACK, PINECONE BROWN)
- LEG OPENING 18"
- INSEAM 31"



**BLACK
04832-BLACK

\$45/\$90



*PINECONE BROWN
04832-PNCBN

\$45/\$90



*MIXED TWEED
04832-MXTWD

\$50/\$100





EMBROIDERED HEAVYWEIGHT FLEECE



EMBROIDERED HEAVYWEIGHT OVERSIZED HOODIE

**EMBROIDERED HEAVYWEIGHT
OVERSIZED HOODIE**
OVERSIZED
S-XXL

\$55/\$110

- 100% COTTON
- HEAVY WEIGHT DRY COTTON FLEECE
- 468 GRAMS
- SET IN SLEEVE
- LEFT CHEST EMBROIDERY



*WASHED BLACK
22645-WABLK



*TIGER'S EYE
22645-TGREY

DELIVERY I

**EMBROIDERED HEAVYWEIGHT
OVERSIZED CREW**
OVERSIZED
S-XXL

\$50/\$100

- 100% COTTON
- HEAVY WEIGHT DRY COTTON FLEECE
- 468 GRAMS
- SET IN SLEEVE
- LEFT CHEST EMBROIDERY



**WASHED BLACK
22696-WABLK



*WASHED NAVY
22696-WANAV

DELIVERY I



WINTER FLEECE

INTRODUCING NEW COLD WEATHER STYLES AND GRAPHICS.

VARSITY BROKEN IN HOODIE

STANDARD
S-XXL

\$50/\$100

- 100% COTTON
- ULTRA SOFT PREMIUM FRENCH TERRY
- BLACK - 330 GRAMS
- HEATHER GREY - 350 GRAMS
- TREATED WITH A VINTAGE WASH FOR A SOFT HAND AND LIVED IN LOOK (BLACK WORN WASH)
- INSET SLEEVES
- ADJUSTABLE DRAWCORDS AT THE HOOD
- CENTER FRONT CRACKLE PRINT
- SET IN RIB AND NECK COLLAR



HEATHER GREY
22644-HTGRY



BLACK WORN WASH
22644-BKWOW

DELIVERY I

RETRO HEAVYWEIGHT RELAXED HOODIE

RELAXED
S-XXL

\$50/\$100

- 80% COTTON 20% POLYESTER
- ULTRA DURABLE HEAVY WEIGHT FLEECE
- 441 GRAMS
- SET IN SLEEVE
- DOUBLE LAYER THREE PIECE HOOD
- LEFT CHEST FELT PATCH



HEATHER GREY/WASHED NAVY
22646-HTGWN

DELIVERY I

REPAIR CREW

STANDARD
S-XXL

\$40/\$80

- 77% COTTON 23% RECYCLED POLYESTER
- MEDIUM WEIGHT RECYCLED FLEECE
- 300 GSM
- INSET SLEEVES
- FRONT CRACKLE PRINT



WASHED BLACK
22638-WABLK

DELIVERY I

PARSONS PATCH CREW

STANDARD
S-XXL

\$40/\$80

- 77% COTTON 23% RECYCLED POLYESTER
- MEDIUM WEIGHT RECYCLED FLEECE
- 300 GSM
- INSET SLEEVES
- LEFT CHEST MERROWED-EDGE EMBROIDERED PATCH



WASHED BLACK
22653-WABLK

DELIVERY I

CREST HOODIE

STANDARD
S-XXL

\$45/\$90

- 77% COTTON 23% RECYCLED POLYESTER
- MEDIUM WEIGHT RECYCLED FLEECE
- 300 GSM
- INSET SLEEVES
- ADJUSTABLE DRAWCORDS AT THE HOOD
- FRONT, BACK, AND SLEEVE PRINT



*BLACK/SAND/WHITE
22021-BKSDW



BEIGE/BLACK/PINE NEEDLE
22021-BGBPN

DELIVERY I

GATEWAY PATCH HOODIE

STANDARD
S-XXL

\$45/\$90

- 77% COTTON 23% RECYCLED POLYESTER
- MEDIUM WEIGHT RECYCLED FLEECE
- 300 GSM
- INSET SLEEVES
- ADJUSTABLE DRAWCORDS AT THE HOOD
- LEFT CHEST MERROWED-EDGE EMBROIDERED PATCH

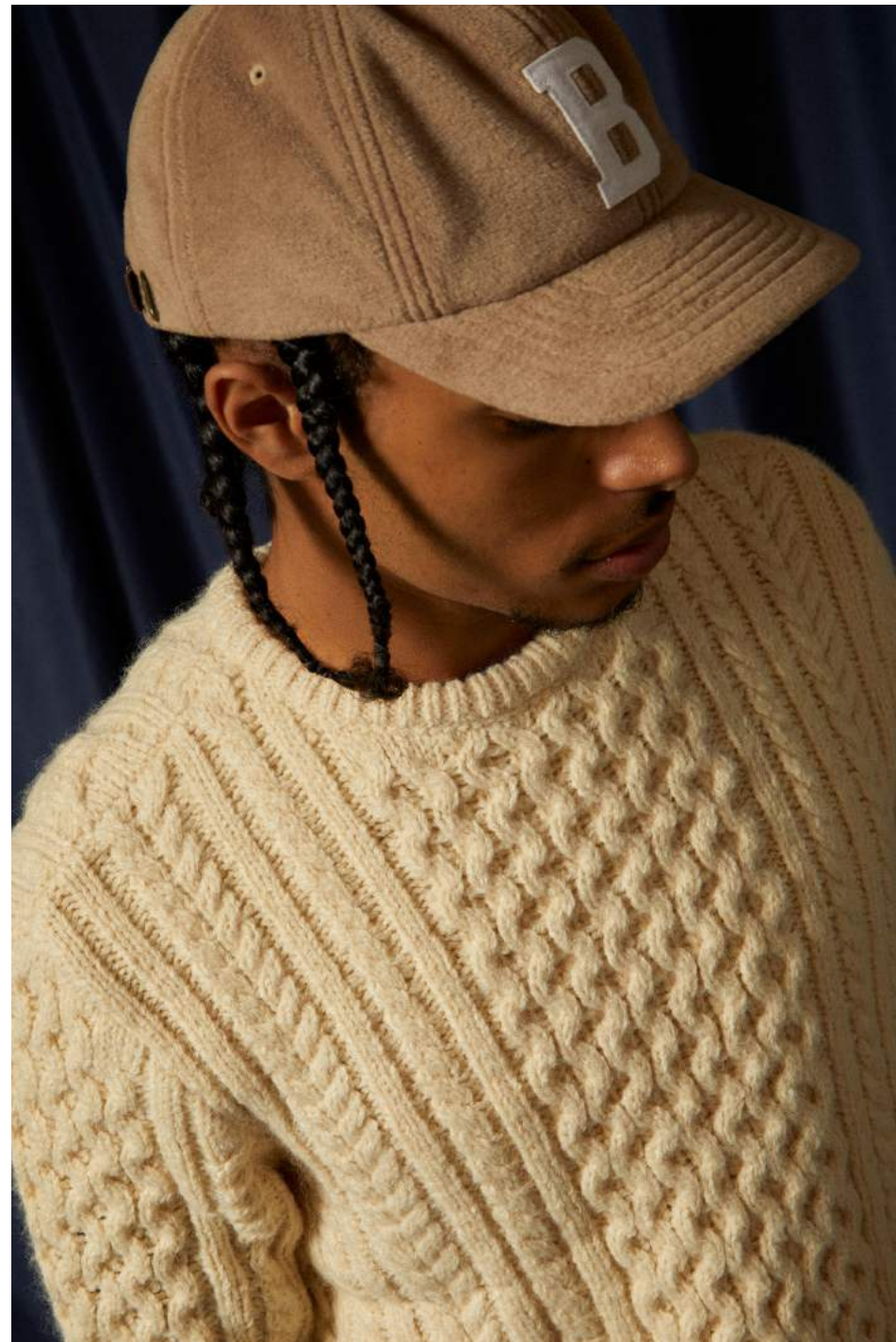


BLACK
22640-BLACK



BEIGE
22640-BEIGE

DELIVERY I



CLASSIC FISHERMAN'S CABLE KNI SWEATER

JACQUES WAFFLE KNIT SWEATER

STANDARD
S-XXL

\$50/\$100

- 100% COTTON
- 50'S INSPIRED FISHERMAN SWEATER IN WAFFLE KNIT
- 2X2 RIBBED HEM AND CUFF
- FULLY FASHIONED SEAMS
- LEATHER SIDE LABEL



*BLACK
22554-BLACK



*TIGER'S EYE
22554-TGREY

DELIVERY I

CLASSIC FISHERMAN'S CABLE KNIT SWEATER

RELAXED
XS-XXL

\$60/\$120

- 68% ACRYLIC 14% NYLON 9% WOOL 9% POLYESTER
- 50'S INSPIRED FISHERMAN SWEATER
- WOOL BLEND
- CABLE KNIT
- FULLY FASHIONED SEAMS
- LEATHER SIDE LABEL



*OATMEAL
22636-OATML

DELIVERY I



VARSITY HEAVYWEIGHT FOOTBALL TEE

RELAXED
S-XXL

\$25/\$50

- 100% COTTON
- VINTAGE INSPIRED FOOTBALL TEE
- HEAVY WEIGHT BRUSHED COTTON
- 250 GRAMS
- SLEEVE STRIPES
- VINTAGE WASH
- HALF SLEEVE
- WOVEN LABEL

DELIVERY I



WASHED NAVY
22649-WANAV



HEATHER GREY/CORDOVAN RED
22649-HTGCR

RESERVE L/S THERMAL

TAILORED
S-XXL

\$40/\$80

- 100% COTTON
- PREMIUM WAFFLE KNIT THERMAL
- TREATED WITH A GARMENT DYE FOR A SOFT HAND AND LIVED IN LOOK
- BINDED NECK COLLAR WITH A V SET
- LET CHEST EMBROIDERY

DELIVERY I



*BLACK
22350-BLACK



*OFF WHITE
22350-OFFWH

PREMIUM COTTON S/S TAILORED TEE

TAILORED
S-XXL

\$25/\$50

- 100% COTTON
- HIGH GAUGE PREMIUM RING-SPUNG COTTON
- MINIMAL SHRINKAGE

DELIVERY I



**WHITE
22097-WHITE



**BLACK
22097-BLACK



*OATMEAL
22097-OATML



*LAUREL WREATH
22097-LURWH

VINTAGE RESERVE S/S POCKET TEE

TAILORED
S-XXL

\$30/\$60

- 100% COTTON
- SIGNATURE BROKEN IN MEDIUM WEIGHT COTTON
- TREATED WITH A SOL WASH FOR A SOFT HAND AND LIVED IN LOOK
- DUE TO THE UNIQUENESS OF THE DYE PROCESS, THERE MAY BE SLIGHT VARIATION IN COLOR AND FINISHING
- BINDED NECK COLLAR
- PICK STITCH AT BOTTOM HEM
- UNISEX

DELIVERY I



**BLACK SOL WASH
22650-BKSWH



*OFF WHITE SOL WASH
22650-OFWSW



WASHED NAVY SOL WASH
22650-WHNSW

VINTAGE RESERVE L/S TEE

TAILORED
S-XXL

\$30/\$60

- 100% COTTON
- SIGNATURE BROKEN IN MEDIUM WEIGHT COTTON
- TREATED WITH A SOL WASH FOR A SOFT HAND AND LIVED IN LOOK
- DUE TO THE UNIQUENESS OF THE DYE PROCESS, THERE MAY BE SLIGHT VARIATION IN COLOR AND FINISHING
- BINDED NECK COLLAR
- PICK STITCH AT BOTTOM HEM
- UNISEX

DELIVERY I



*BLACK SOL WASH
22498-BKSWH



*OFF WHITE SOL WASH
22498-OFWSW



WASHED NAVY SOL WASH
22498-WHNSW



TIGER S/S STANDARD TEE



TIGER S/S STANDARD TEE

STANDARD
S-XXL

\$27.50/\$55

- 100% COTTON
- TREATED WITH A VINTAGE WASH FOR A SOFT HAND AND LIVED IN LOOK
- DUE TO THE NATURE OF THE DYE, EACH ITEM IS TRULY UNIQUE AND THERE MAY BE SLIGHT VARIATION IN COLOR AND FINISHING
- CRACKLE PRINT



TOBACCO BROWN WORN WASH
17194-TBBWW



BLACK WORN WASH
17194-BKWOW

DELIVERY I

REPAIR S/S STANDARD TEE

STANDARD
S-XXL

\$27.50/\$55

- 100% COTTON
- TREATED WITH A VINTAGE WASH FOR A SOFT HAND AND LIVED IN LOOK
- DUE TO THE NATURE OF THE DYE, EACH ITEM IS TRULY UNIQUE AND THERE MAY BE SLIGHT VARIATION IN COLOR AND FINISHING
- CRACKLE PRINT



*BLACK WORN WASH
17177-BKWOW



MAHOGANY WORN WASH
17177-MHGWW

DELIVERY I

WAYBURN S/S STANDARD TEE

STANDARD
S-XXL

\$20/\$40

- 100% COTTON
- SCREEN PRINT



WHITE
17192-WHITE



BLACK
17192-BLACK

DELIVERY I

SPARKY S/S TAILORED TEE

TAILORED
S-XXL

- 100% COTTON
- SCREEN PRINT

\$25/\$50



WHITE
17197-WHITE

BLACK
17197-BLACK

DELIVERY I

GRAVES S/S POCKET TEE

TAILORED
S-XXL

- 100% COTTON
- SCREEN PRINT

\$25/\$50



OATMEAL
17183-OATML

LAUREL WREATH
17183-LURWH

DELIVERY I

MOTORWAY HEAVYWEIGHT RELAXED TEE

RELAXED
S-XXL

- 100% COTTON
- VINTAGE INSPIRED RELAXED HEAVY WEIGHT TEE
- TREATED WITH A CLASSIC WASH FOR A SOFT HAND AND LIVED IN LOOK
- SCREEN PRINT
- 285 GRAMS

\$25/\$50



CREAM CLASSIC WASH
17196-CRMCW

BLACK CLASSIC WASH
17196-BLCCW

DELIVERY I

WAYBURN L/S STANDARD TEE

STANDARD
S-XXL

- 100% COTTON
- SCREEN PRINT

\$25/\$50



BLACK
17199-BLACK

WHITE
17199-WHITE

DELIVERY I



RAVEN S/S TAILORED TEE

TAILORED
S-XXL

- 100% COTTON
- SCREEN PRINT

\$25/\$50



OATMEAL
17198-OATML



LAUREL WREATH
17198-LURWH



DELIVERY I

PONDEROSA S/S TAILORED TEE

TAILORED
S-XXL

- 100% COTTON
- SCREEN PRINT

\$25/\$50



WHITE
17201-WHITE



BLACK
17201-BLACK

DELIVERY I





OSBORN S/S STANDARD TEE

STANDARD
S-XXL

\$27.50/\$55

- 100% COTTON
- TREATED WITH A VINTAGE WASH FOR A SOFT HAND AND LIVED IN LOOK
- DUE TO THE NATURE OF THE DYE, EACH ITEM IS TRULY UNIQUE AND THERE MAY BE SLIGHT VARIATION IN COLOR AND FINISHING
- CRACKLE PRINT



TOBACCO BROWN WORN WASH
17193-TBBWW



BLACK WORN WASH
17193-BKWOW



DELIVERY I

NORVELL S/S STANDARD TEE

STANDARD
S-XXL

\$27.50/\$55

- 100% COTTON
- TREATED WITH A VINTAGE WASH FOR A SOFT HAND AND LIVED IN LOOK
- DUE TO THE NATURE OF THE DYE, EACH ITEM IS TRULY UNIQUE AND THERE MAY BE SLIGHT VARIATION IN COLOR AND FINISHING
- SCREEN PRINT



MAHOGANY WORN WASH
17195-MHGWW



BLACK WORN WASH
17195-BKWOW



DELIVERY I

ALPHA SQUARE S/S STANDARD TEE

STANDARD
S-XXL

\$20/\$40

- 100% COTTON
- SCREEN PRINT



TIGER'S EYE/NAVY/OFF WHITE
16428-TENOW



BLACK/GOLD/BROWN
16428-BKGBN



DELIVERY I

LINWOOD S/S STANDARD TEE

STANDARD S-XXL
• 100% COTTON
• SCREEN PRINT

\$20/\$40



TIGER'S EYE/NAVY/OLIVE
16172-TGENO

*CREAM
16172-CREAM

*BLACK/ORANGE/WHITE
16172-BLOGW

DELIVERY I

CREST II S/S STANDARD TEE

STANDARD S-XXL
• 100% COTTON
• SCREEN PRINT

\$20/\$40



TIGER'S EYE/WASHED BLACK/MAHOGANY
16493-TEWBM

*BLACK/CHARCOAL/MAHOGANY
16493-BLCAM

DELIVERY I

REGAL S/S STANDARD TEE

STANDARD S-XXL
• 100% COTTON
• SCREEN PRINT

\$20/\$40



*CREAM/NAVY
16962-CRNAV

IVY GREEN/WASHED BLACK/RUST
16962-IGWBR

DELIVERY I

GRADE S/S STANDARD TEE

STANDARD S-XXL
• 100% COTTON
• SCREEN PRINT

\$20/\$40



TIGER'S EYE/WASHED NAVY/BROWN
17118-WEWNB

HEATHER GREY/WASHED BLACK/RED
17118-HGWBR

DELIVERY I

OATH V S/S STANDARD TEE

STANDARD S-XXL
• 100% COTTON
• SCREEN PRINT

\$20/\$40



*BLACK/RUST/SAND
16410-BLKRS

WHITE/WASHED BLACK/GOLD
16410-WHWBG

IVY GREEN/WASHED BLACK/RUST
16410-IGWBR

DELIVERY I

BUILDERS S/S STANDARD TEE

STANDARD S-XXL
• 100% COTTON
• WOVEN LABEL

\$22.50/\$45



*BLACK
16963-BLACK

TIGER'S EYE
16963-TGREY

DELIVERY I

WOODBURN S/S TAILORED POCKET TEE

TAILORED
S-XXL

- 100% COTTON
- SCREEN PRINT

\$25/\$50



**WHITE
17084-WHITE

**BLACK
17084-BLACK

DELIVERY I

PARSONS S/S TAILORED TEE

TAILORED
S-XXL

- 100% COTTON
- SCREEN PRINT

\$25/\$50



WHITE/WASHED NAVY/BROWN
16803-WHWNB

WASHED NAVY/GREY/BRICK
16803-WHNGB

DELIVERY I

HUBAL S/S TAILORED TEE

TAILORED
S-XXL

- 100% COTTON
- SCREEN PRINT

\$25/\$50



WHITE/BRASS
17092-WHTBS

*BLACK
17092-BLACK

DELIVERY I

HOLIDAY 2024

BRIXTON | 154

WOODBURN HEAVYWEIGHT RELAXED TEE

RELAXED
S-XXL

- 100% COTTON
- VINTAGE INSPIRED RELAXED HEAVY WEIGHT TEE
- TREATED WITH A CLASSIC WASH FOR A SOFT HAND AND LIVED IN LOOK
- WOVEN WOODBURN LABEL
- 285 GRAMS

\$25/\$50



**CREAM CLASSIC WASH
22623-CRMCW

**BLACK CLASSIC WASH
22623-BLCCW

DELIVERY I

BUILDERS L/S STANDARD TEE

STANDARD
S-XXL

- 100% COTTON
- WOVEN LABEL
- SLEEVE PRINT

\$27.50/\$55



*BLACK/DUSK
16977-BLKDK

TIGER'S EYE
16977-TGREY

DELIVERY I

REGAL L/S STANDARD TEE

STANDARD
S-XXL

- 100% COTTON
- SCREEN PRINT

\$25/\$50



WHITE/CHARCOAL/MAHOGANY
17190-WHCHM

TIGER'S EYE/BROWN/NAVY
17190-TGEBN

DELIVERY I

HOLIDAY 2024

BRIXTON | 155

