




BRIXTON

SPRING 2025



WE ARE A VINTAGE INSPIRED
LIFESTYLE BRAND FROM OCEANSIDE, CA.
OUR FOUNDATION IS BUILT ON MUSIC,
GARAGE CULTURE AND INDIVIDUALITY.

FOR SPRING 2025 WE'RE HITTING THE ROAD

Embrace the Unknown. Road trips are not just about reaching a destination; they are about the journey itself. Embrace the unknown paths and unexpected detours that come your way, often leading to the most memorable experiences.







DUNE WTHR GUARD™
BUCKET HAT

HAWKINS WTHR GUARD™
COWBOY HAT



THE WTHR GUARD™ COLLECTION IS BUILT FOR EVERYDAY WEAR, DEVELOPED TO KEEP YOU COOL AND DRY.
ALL PIECES PROUDLY MADE IN BREATHABLE WATER REPELLENT AUSTRALIAN WOOL FELT,
ACCOMPANIED WITH A MOISTURE WICKING SWEATBAND. A HAT PERFECT FOR ANY AND ALL WEATHER.

WESLEY WTHR GUARD PACKABLE FEDORA

BRIM LENGTH: 6cm/2.75"
CROWN HEIGHT: 11cm/4.25"
XS-XL

\$45/\$90

- WATER REPELLENT AUSTRALIAN WOOL FELT



DELIVERY 3

- 100% WOOL FELT
- LEATHER BAND AND NECK ROPE
- SWEATBAND IS BUILT WITH MOISTURE WICKING PROPERTIES, TO KEEP YOU FRESH AND COOL.
- LIGHT STIFFNESS
- PACKABLE FOR ANY AND ALL ADVENTURES
- RUST FREE EYELETS FOR BREATHABILITY
- FLAT BRIM
- TEARDROP CROWN
- ADJUSTABLE VELCRO STRAP UNDER SWEATBAND FOR CUSTOM FIT
- METAL HEADWEAR PLAQUE
- UNISEX



** LIGHT MOSS
11732-LGTMS



* COFFEE
11732-COFFE

HAWKINS WTHR GUARD COWBOY HAT

BRIM LENGTH: 9cm/3.5"
CROWN HEIGHT: 10.5cm/4"
XS-XL

\$50/\$100



DELIVERY 3

- WATER REPELLENT AUSTRALIAN WOOL FELT
- 100% WOOL FELT
- LEATHER BAND
- SWEATBAND IS BUILT WITH MOISTURE WICKING PROPERTIES, TO KEEP YOU FRESH AND COOL.
- MEDIUM STIFFNESS
- TEARDROP CROWN
- STRAIGHT BRIM
- ADJUSTABLE VELCRO STRAP UNDER SWEATBAND FOR CUSTOM FIT
- METAL HEADWEAR PLAQUE
- UNISEX



* BRINDLE/ BLACK
11733-BRDBK



* SAND/ NATURAL
11733-SNDNL

SCOTTSDALE WTHR GUARD HAT

BRIM LENGTH: 8cm/3.25"
CROWN HEIGHT: 10cm/4"
XS-XL

\$55/\$110

- WATER REPELLENT AUSTRALIAN WOOL FELT
- 100% WOOL FELT



DELIVERY 3

- RUST FREE EYELETS FOR BREATHABILITY
- SWEATBAND IS BUILT WITH MOISTURE WICKING PROPERTIES, TO KEEP YOU FRESH AND COOL.
- SHAPEABLE BRIM WITH WIRE TO SHAPE TO YOUR DESIRED LOOK
- LIGHT STIFFNESS
- TEARDROP CROWN
- ADJUSTABLE VELCRO STRAP UNDER SWEATBAND FOR CUSTOM FIT
- METAL HEADWEAR PLAQUE
- UNISEX



** SAND
11734-SAND



* MOSS
11734-MOSS

DUNES SAFARI WTHR GUARD BUCKET HAT

BRIM LENGTH: 5cm/2"

S/M, L/XL

\$55/\$110



DELIVERY 3

- BUILT IN OUR WTHR GUARD, WATER REPELLENT WAXED CLOTH
- 100% COTTON
- FLOATABLE BRIM
- DETACHABLE ADJUSTABLE NECK ROPE
- ADJUSTABLE BUNGEE
- DIRECT EMBROIDERY
- SWEATBAND IS BUILT WITH MOISTURE WICKING PROPERTIES, TO KEEP YOU FRESH AND COOL



* COPPER
11958-COPPR



* MOSS
11958-MOSS

**HOOLIGAN WTHR GUARD
FLAT CAP**

\$30/\$60
XS-XL

- A 20'S INSPIRED CLASSIC FLAT CAP
- 100% COTTON
- BUILT IN OUR WTHR GUARD, WATER REPELLENT WAXED CLOTH
- TAPED SEAMS
- METAL CREST PIN
- SWEATBAND IS BUILT WITH MOISTURE WICKING PROPERTIES, TO KEEP YOU FRESH AND COOL.
- SEWN EYELETS



► COPPER
11842-COPPR

DELIVERY 3

**FIDDLER WTHR GUARD
FISHERMAN CAP**

\$35/\$70
XS-XL

- A 50'S INSPIRED CLASSIC FISHERMAN'S CAP
- 100% COTTON
- BUILT IN OUR WTHR GUARD, WATER REPELLENT WAXED CLOTH
- METAL HEADWEAR PIN



► WASHED NAVY
11843-WANAV

DELIVERY 3

**WTHR GUARD NETPLUS
SNAPBACK**

**HIGH PROFILE =
UNSTRUCTURED
5-PANEL FLAT BILL**
O/S

\$30/\$60

- BUILT IN OUR WTHR GUARD, WATER REPELLENT WAXED CLOTH
- 100% COTTON
- FLAG LABEL AT BACK CLOSURE
- BUILT WITH A BUREO NETPLUS® VISOR MADE FROM RECYCLED FISHING NETS
- SWEATBAND IS BUILT WITH MOISTURE WICKING PROPERTIES, TO KEEP YOU FRESH AND COOL.
- ADJUSTABLE SNAPBACK CLOSURE



WASHED NAVY
11816-WANAV



COPPER
11816-COPPR

DELIVERY 3

**GAME WTHR GUARD NETPLUS
ADJUSTABLE HAT**

**MEDIUM PROFILE =
UNSTRUCTURED
6-PANEL CURVED BILL**
O/S

\$30/\$60

- BUILT IN OUR WTHR GUARD, WATER REPELLENT WAXED CLOTH
- 100% COTTON
- DIRECT EMBROIDERY
- BUILT WITH A BUREO NETPLUS® VISOR MADE FROM RECYCLED FISHING NETS
- SWEATBAND IS BUILT WITH MOISTURE WICKING PROPERTIES, TO KEEP YOU FRESH AND COOL.
- FLAG LABEL AT BACK CLOSURE
- ADJUSTABLE SELF FABRIC CLOSURE



MOSS
11800-MOSS

DELIVERY 3

**MUSKIE WTHR GUARD NETPLUS
ADJUSTABLE HAT**

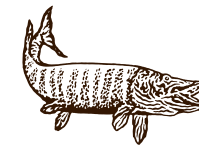
**MEDIUM PROFILE =
UNSTRUCTURED
6-PANEL CURVED BILL**
O/S

\$30/\$60

- BUILT IN OUR WTHR GUARD, WATER REPELLENT WAXED CLOTH
- 100% COTTON
- DIRECT EMBROIDERY
- BUILT WITH A BUREO NETPLUS® VISOR MADE FROM RECYCLED FISHING NETS
- SWEATBAND IS BUILT WITH MOISTURE WICKING PROPERTIES, TO KEEP YOU FRESH AND COOL.
- FLAG LABEL AT BACK CLOSURE
- ADJUSTABLE SELF FABRIC CLOSURE



COPPER
11801-COPPR



HEADWEAR GUIDE:

THE STRAW LINEUP

Breathable and easy. Lightweight yet structured. Naturally sun-protective and sophisticated. A closer look at our straw offering this season.



PANAMA STRAW

Handwoven by skilled artisans, panama straw is the epitome of premium and fine craftsmanship. Taken from the natural toquilla palm its grown and harvested in ecuador and is only available in limited runs. Each hat constructed in panama straw takes a great deal of time and effort, making each piece truly one of a kind. Not only does panama straw offer premium detail but all styles give you 45+ UPF protection.

ARTISANAL STRAW



An elegant woven straw that is breathable, light weight, and offers UPF protection. With its uniquely textured detail, all artisanal straw styles are beautiful, modern, and bring forth highs and lows to stand out from the crowd. These brimmed styles are meant to be worn during the spring and summer time around the pool, beach, or paired with a great outfit for any hat wearer.

TRIPILLA STRAW



Our premium tripilla straw is high quality, lightweight, and breathable. This is a tightly woven straw that offers 50+ UPF protection. Built in two silhouettes to round out your spring and summer closet.



MARINA PANAMA LIFE GUARD HAT



LAREDO PANAMA STRAW COWBOY HAT

LAREDO PANAMA STRAW COWBOY HAT

BRIM LENGTH: 7.5cm/3"
CROWN HEIGHT: 11cm/4.25"
XS-XL

\$135/\$270

- A TRADITIONAL COWBOY HAT
- 100% STRAW
- PANAMA STRAW
- HARD STIFFNESS



DELIVERY 2

- SUEDE OUTSIDE BAND
- METAL HEADWEAR PLAQUE
- ADJUSTABLE VELCRO STRAP UNDER SWEATBAND FOR CUSTOM FIT
- SWEATBAND IS BUILT WITH MOISTURE WICKING PROPERTIES, TO KEEP YOU FRESH AND COOL
- FRETWORK IN CROWN FOR BREATHABILITY
- CATTLEMAN CROWN
- SIDE ROLL BRIM
- UNISEX



* CATALINA SAND
11822-CATSD



* NAVY
11822-NAVY

MARINA PANAMA LIFE GUARD HAT

BRIM LENGTH: 5.5cm/2.25"
CROWN HEIGHT: 10.5cm/4"
XS-L

\$125/\$250



DELIVERY 2

- A MODERN TAKE ON A WIDE BRIM LIFE GUARD HAT
- 100% STRAW
- PANAMA STRAW
- MEDIUM STIFFNESS
- STRAIGHT BRIM
- CATTLEMAN CROWN
- ADJUSTABLE VELCRO STRAP UNDER SWEATBAND FOR CUSTOM FIT
- ROUNDED LEATHER BAND AND NECK ROPE
- SWEATBAND IS BUILT WITH MOISTURE WICKING PROPERTIES, TO KEEP YOU FRESH AND COOL
- METAL HEADWEAR PLAQUE
- WOMEN'S



* PANAMA WHITE
11832-PANWT

LOPEZ PANAMA STRAW BUCKET HAT

BRIM LENGTH: 9cm/3.5"
CROWN HEIGHT: 10cm/4"
XS-L

\$125/\$250



DELIVERY 2

- A 60'S INSPIRED PREMIUM BUCKET HAT
- 100% STRAW
- PANAMA STRAW
- MEDIUM STIFFNESS
- DOWNTICK BRIM
- OPEN CROWN
- SWEATBAND IS BUILT WITH MOISTURE WICKING PROPERTIES, TO KEEP YOU FRESH AND COOL.
- WOMEN'S



* NAVY
11532-NAVY

HARPER PANAMA STRAW HAT

BRIM LENGTH: 9.5cm/3.75"
CROWN HEIGHT: 10cm/4"
XS-L

\$130/\$260



DELIVERY 2

- A TRADITIONAL PANAMA INSPIRED SHAPE WITH A MODERN FLARE
- 100% STRAW
- PANAMA STRAW
- MEDIUM STIFFNESS
- DOWNTICK BRIM
- TEARDROP CROWN
- SWEATBAND IS BUILT WITH MOISTURE WICKING PROPERTIES, TO KEEP YOU FRESH AND COOL.
- LEATHER BAND
- HEAT BRANDING INTERIOR LOGO
- WOMEN'S



** CATALINA SAND
11530-CATSD



* NAVY
11530-NAVY



AUSTIN STRAW COWBOY HAT



AUSTIN STRAW COWBOY HAT

BRIM LENGTH: 7.5cm/3"
CROWN HEIGHT: 11cm/4.25"
XS-L

\$50/\$100



DELIVERY 1

- A TRADITIONAL COWBOY HAT WITH A MODERN FLARE
- 100% STRAW
- ARTISANAL STRAW
- MEDIUM STIFFNESS
- CATTLEMAN CROWN
- SIDE ROLL BRIM
- ADJUSTABLE VELCRO STRAP UNDER SWEATBAND FOR CUSTOM FIT
- 100% COTTON DRAWCORD WITH WOOD BEAD ADJUSTER
- METAL HEADWEAR PLAQUE
- WOMEN'S



** BONE
11888-BONE

COHEN COWBOY STRAW HAT

BRIM LENGTH: 7.5cm/3"
CROWN HEIGHT: 11cm/4.25"
XS-XL

\$50/\$100



DELIVERY 1

- AN EASY TO WEAR COWBOY HAT
- 100% STRAW
- ARTISANAL STRAW
- HARD STIFFNESS
- STRAIGHT BRIM
- TEARDROP CROWN
- ADJUSTABLE VELCRO STRAP UNDER SWEATBAND FOR CUSTOM FIT
- GROSGRAIN BAND
- METAL HEADWEAR PLAQUE
- UNISEX



** NATURAL
11613-NATUR

ROMA STRAW FEDORA

BRIM LENGTH: 5.5cm/2.25"
CROWN HEIGHT: 10.5cm/4"
XS-XL

\$45/\$90



DELIVERY 1

- A SOPHISTICATED SHORT BRIM FEDORA
- 100% STRAW
- ARTISANAL STRAW
- MEDIUM STIFFNESS
- STRAIGHT BRIM
- TEARDROP CROWN
- ADJUSTABLE VELCRO STRAP UNDER SWEATBAND FOR CUSTOM FIT
- GROSGRAIN BAND
- METAL HEADWEAR PLAQUE
- UNISEX



▷ NATURAL/ BLACK
11614-NABLK

SWINDLE STRAW FEDORA

BRIM LENGTH: 10cm/4"
CROWN HEIGHT: 10.5cm/4"
XS-XL

\$85/\$170



DELIVERY 2

- A CLASSIC 50'S INSPIRED FEDORA
- 100% STRAW
- FINE TRIPILLA STRAW
- MEDIUM STIFFNESS
- TEARDROP CROWN
- UPTICK BRIM
- ADJUSTABLE VELCRO STRAP UNDER SWEATBAND FOR CUSTOM FIT
- GROSGRAIN BAND
- SWEATBAND IS BUILT WITH MOISTURE WICKING PROPERTIES, TO KEEP YOU FRESH AND COOL
- METAL HEADWEAR PLAQUE
- UNISEX



▷ NATURAL/ NATURAL
11839-NATNT

ELEANOR STRAW HAT

BRIM LENGTH: 10cm/4"
CROWN HEIGHT: 10.5cm/4"
XS-L

\$50/\$100



DELIVERY 1

- A MODERN TAKE ON A FASHION SILHOUETTE
- 100% STRAW
- ARTISANAL STRAW
- MEDIUM STIFFNESS
- TEARDROP CROWN
- DOWNTICK BRIM
- LEATHER BAND WITH METAL STUD
- ADJUSTABLE VELCRO STRAP UNDER SWEATBAND FOR CUSTOM FIT
- SWEATBAND IS BUILT WITH MOISTURE WICKING PROPERTIES, TO KEEP YOU FRESH AND COOL
- METAL HEADWEAR PLAQUE
- WOMEN'S



▷ BONE
11835-BONE



▷ NATURAL
11835-NATUR



JOANNA HAT

FRANCISCO JUTE FEDORA

BRIM LENGTH: 7.5cm/3"
CROWN HEIGHT: 11cm/4.25"
XS-XL

\$50/\$100



DELIVERY 2

- AN ELEVATED ADVENTURE STRAW HAT
- 80% COTTON 20% POLYESTER
- JUTE STRAW
- HARD STIFFNESS
- LEATHER BAND WITH TAILS
- METAL HEADWEAR PLAQUE
- EYELETS FOR BREATHABILITY
- ADJUSTABLE VELCRO STRAP UNDER SWEATBAND FOR CUSTOM FIT
- TEARDROP CROWN
- STRAIGHT BRIM
- UNISEX



* NATURAL/ BLACK
11827-NABLK



* COPPER/ COPPER
11827-CPCOP

JOANNA HAT

BRIM LENGTH: 10cm/4"
CROWN HEIGHT: 10.5cm/4"
XS-L

\$35/\$70



DELIVERY 1

- A CLASSIC TAKE ON A WIDE BRIM SUN HAT
- 100% STRAW
- WHEAT STRAW
- LIGHT STIFFNESS
- DOWNTICK BRIM
- TEARDROP CROWN
- ADJUSTABLE VELCRO STRAP UNDER SWEATBAND FOR CUSTOM FIT
- GROSGRAIN BAND
- METAL HEADWEAR PLAQUE
- WOMEN'S



** HONEY
10784-HONEY



** HONEY/LION
10784-HONLN



* SMOKE GREY
10784-SMKGY

JOANNA VISOR

BRIM LENGTH: 10cm/4"
XS-L

\$30/\$60

- A CLASSIC WIDE BRIM VISOR
- 100% STRAW
- WHEAT STRAW
- MEDIUM STIFFNESS
- STRAIGHT BRIM
- METAL HEADWEAR PLAQUE
- WOMEN'S



** HONEY
10658-HONEY

DELIVERY 1

HOUSTON II STRAW COWBOY

BRIM LENGTH: 7.5cm/3"
CROWN HEIGHT: 11cm/4.25"
S/M, L/XL

\$50/\$100

- AN EMBLEMATIC COWBOY HAT
- 100% STRAW
- ROUGH STRAW
- LIGHT STIFFNESS
- CATTLEMAN CROWN
- SIDE ROLL BRIM
- ELASTIC SWEATBAND
- TRIPLE WRAPPED CORD OUTSIDE BAND
- METAL HEADWEAR PLAQUE
- UNISEX



▸ BLACK
11823-BLACK



▸ TAN
11823-TAN

DELIVERY 1

BELLS II SUN HAT

BRIM LENGTH: 7.5cm/3"
CROWN HEIGHT: 11cm/4.25"
S/M, L/XL

\$25/\$50

- A MODERN TAKE ON A CLASSIC SUN HAT
- 100% STRAW
- MAZALLO PALM STRAW
- MEDIUM STIFFNESS
- DOWNTICK BRIM
- TEARDROP CROWN
- ELASTIC SWEATBAND
- RUST FREE EYELETS
- FAUX LEATHER BAND AND NECK ROPE
- LEATHER FOLD LABEL
- UNISEX



**▸ TAN
11162-TAN



▸ LIGHT BROWN
11162-LTBRN

DELIVERY 1

CASTOR FEDORA

BRIM LENGTH: 4.5cm/1.75"
CROWN HEIGHT: 10.8cm/4.25"
XS-XL

\$35/\$70

- A 20'S INSPIRED TRADITIONAL MENSWEAR FEDORA
- 100% STRAW
- PAPER STRAW
- MEDIUM STIFFNESS
- UPTICK BRIM
- CENTER DENT CROWN
- ADJUSTABLE VELCRO STRAP UNDER SWEATBAND FOR CUSTOM FIT
- GROSGRAIN BAND
- METAL CREST PIN
- UNISEX



**▸ TAN
10767-TAN



DELIVERY 1



PACKABLE STRAW AND
KNIT BRIMMED HEADWEAR

**HORTON CONVERTABRIM
PACKABLE FEDORA**

BRIM LENGTH: 4.5cm/1.75"
CROWN HEIGHT: 10.8cm/4.25"

XS-XL

\$30/\$60

- A 20'S INSPIRED TRADITIONAL PACKABLE MENSWEAR FEDORA
- 100% STRAW
- PAPER STRAW
- SWEATBAND IS BUILT WITH MOISTURE WICKING PROPERTIES, TO KEEP YOU FRESH AND COOL

- LIGHT STIFFNESS
- TEARDROP CROWN
- ADAPTABLE CONVERTIBLE BRIM THAT CAN BE FLIPPED UP OR DOWN.
- GROSGRAIN BAND
- METAL CREST PIN
- ADJUSTABLE VELCRO STRAP UNDER SWEATBAND FOR CUSTOM FIT
- UNISEX



* DARK TAN/ LIGHT BROWN
11834-DKTLB

DELIVERY 1



**CAROLINA STRAW PACKABLE
TRAVEL HAT**

BRIM LENGTH: 10cm/4"
CROWN HEIGHT: 10.5cm/4"

XS-L

\$35/\$70

- A TRADITIONAL PANAMA INSPIRED SHAPE THAT IS PACKABLE
- 100% STRAW
- PAPER STRAW
- SWEATBAND IS BUILT WITH MOISTURE WICKING PROPERTIES, TO KEEP YOU FRESH AND COOL
- LIGHT STIFFNESS
- DOWNTICK BRIM
- TEARDROP CROWN
- ADJUSTABLE VELCRO STRAP UNDER SWEATBAND FOR CUSTOM FIT
- GROSGRAIN BAND
- METAL HEADWEAR PLAQUE
- UNISEX



* BLACK/ NATURAL
11850-BKNAT

DELIVERY 1



**WESLEY STRAW PACKABLE
FEDORA**

BRIM LENGTH: 10cm/4"
CROWN HEIGHT: 10.5cm/4"

XS-XL

\$40/\$80

- A 20'S INSPIRED CLASSIC FEDORA THAT IS PACKABLE
- 100% STRAW
- PAPER STRAW
- LIGHT STIFFNESS
- STRAIGHT BRIM
- TEARDROP CROWN
- ADJUSTABLE VELCRO STRAP UNDER SWEATBAND FOR CUSTOM FIT
- LEATHER BAND
- METAL HEADWEAR PLAQUE
- UNISEX



** TAN
10823-TAN

DELIVERY 1



MITCH PACKABLE SUN HAT

BRIM LENGTH: 7.5cm/3"
CROWN HEIGHT: 11cm/4.25"

XS-XL

\$25/\$50

- AN ELEVATED PACKABLE SUN HAT
- 100% STRAW
- PAPER STRAW
- LIGHT STIFFNESS
- STRAIGHT BRIM
- TEARDROP CROWN
- ELASTIC SWEATBAND
- ADJUSTABLE POLYESTER BAND AND NECK ROPE
- METAL HEADWEAR PLAQUE
- UNISEX



** TAN
11475-TAN

DELIVERY 1



LYONS KNIT PACKABLE HAT

BRIM LENGTH: 10cm/4"
CROWN HEIGHT: 10.5cm/4"

XS/S, M/L

\$30/\$60

- A TRADITIONAL PANAMA INSPIRED SHAPE THAT IS PACKABLE
- 100% COTTON
- LIGHT STIFFNESS
- DOWNTICK BRIM
- TEARDROP CROWN
- ADJUSTABLE VELCRO STRAP UNDER SWEATBAND FOR CUSTOM FIT
- GROSGRAIN BAND
- METAL HEADWEAR PLAQUE
- WOMEN'S



* DARK TAN/ BLACK
11675-DRKTB

DELIVERY 2



* MACADAMIA
11675-MCDMA

**LYONS KNIT PATTERN
PACKABLE HAT**

BRIM LENGTH: 10cm/4"
CROWN HEIGHT: 10.5cm/4"

XS/S, M/L

\$30/\$60

- A TRADITIONAL PANAMA INSPIRED SHAPE THAT IS PACKABLE
- 100% COTTON
- LIGHT STIFFNESS
- DOWNTICK BRIM WITH JACQUARD DETAIL
- TEARDROP CROWN WITH JACQUARD DETAIL
- ADJUSTABLE VELCRO STRAP UNDER SWEATBAND FOR CUSTOM FIT
- GROSGRAIN BAND
- METAL HEADWEAR PLAQUE
- WOMEN'S

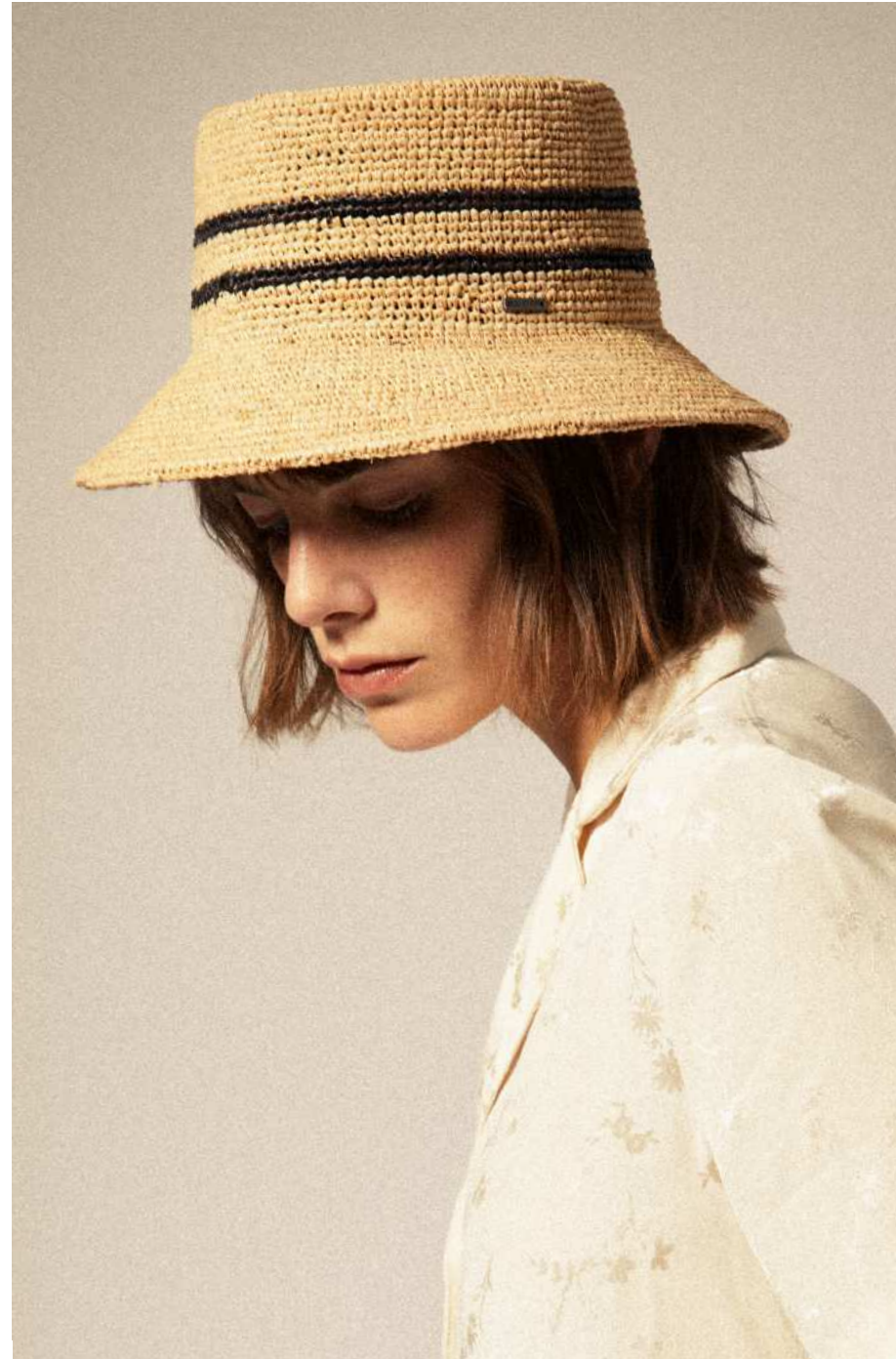


* LIGHT TAN/ LIGHT TAN
11889-LGTLT

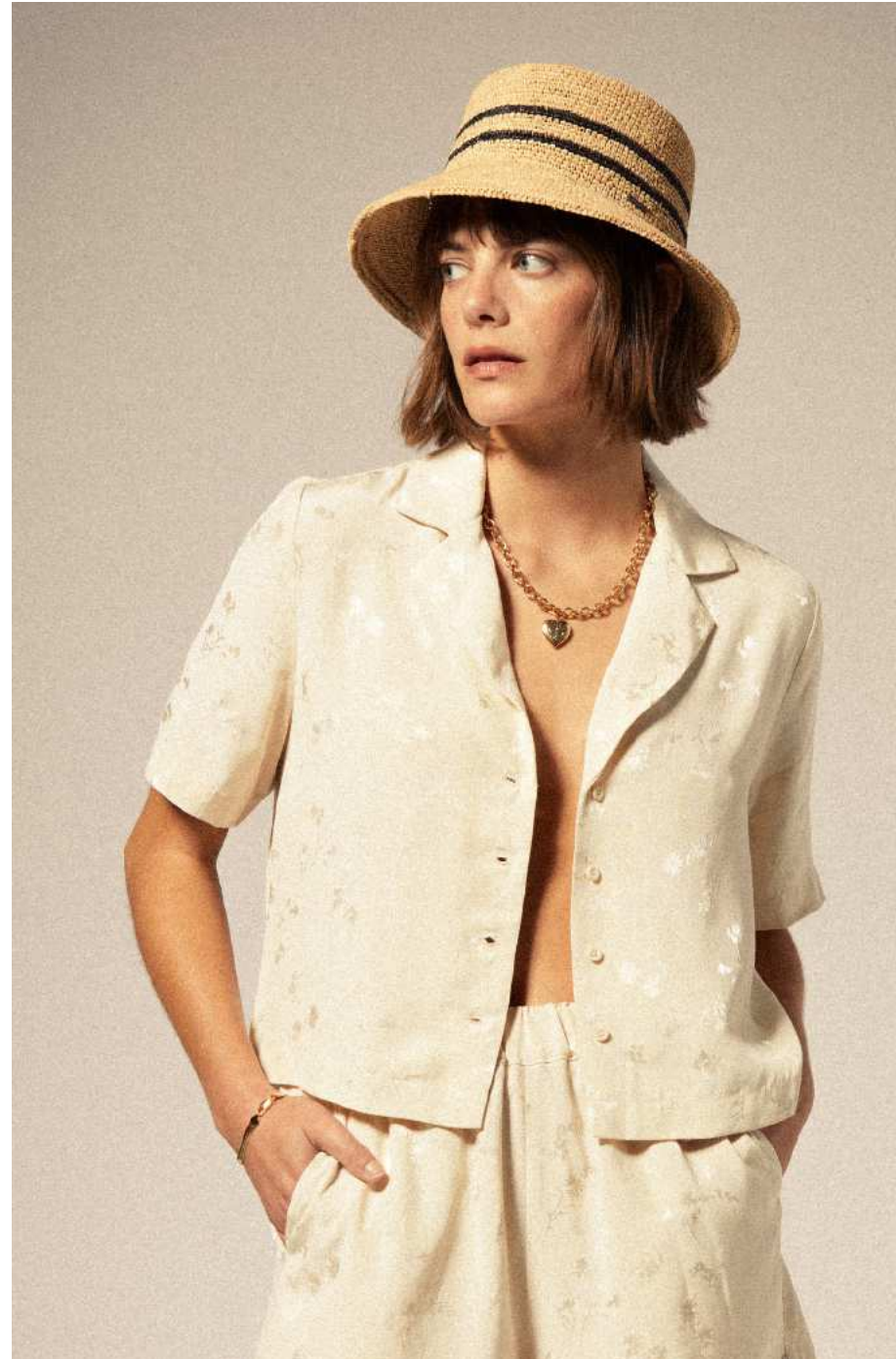
DELIVERY 1



* COFFEE/ COFFEE
11889-CFFCF



ELLEE STRAW BUCKET HAT



ELLEE STRAW BUCKET HAT

BRIM LENGTH: 6cm/2.5"

XS/S, M/L

\$60/\$120

- CROCHET RAFFIA STRAW
- 100% STRAW
- ELASTIC SWEATBAND
- METAL HEADWEAR PLAQUE
- WOMEN'S



* TAN/ BLACK
11624-TNBLK

DELIVERY 2

ALICE PACKABLE BUCKET HAT

BRIM LENGTH: 9CM/3.75"

XS/S, M/L

- 100% STRAW
- A 60'S INSPIRED COMBINATION OF A SUN HAT AND BUCKET
- PAPER STRAW CLOTH
- METAL HEADWEAR PLAQUE
- FRINGE EDGE
- WOMEN'S



*TAN
11350-TAN



DELIVERY 1

NEWPORT STRAW VISOR

BRIM LENGTH: 9.5cm/3.75"
CROWN HEIGHT: 10cm/4"

O/S

\$30/\$60

- A CLASSIC, EASY TO WEAR VISOR
- PAPER STRAW
- 100% STRAW
- LIGHT STIFFNESS
- ELASTIC BACK
- METAL HEADWEAR PLAQUE
- WOMEN'S



** NATURAL/ NATURAL
11626-NATNT

DELIVERY 2

SPRING 2025



WESTERN HEADWEAR



MARLOW RANCHER HAT



LAREDO COWBOY HAT

LAREDO COWBOY HAT

BRIM LENGTH: 7.5cm/3"
CROWN HEIGHT: 11cm/4.25"
XS-XL

\$70/\$140



DELIVERY 1

- A TRADITIONAL COWBOY HAT
- 100% WOOL FELT
- HARD STIFFNESS
- SUEDE OUTSIDE BAND
- METAL HEADWEAR PLAQUE
- ADJUSTABLE VELCRO STRAP UNDER SWEATBAND FOR CUSTOM FIT
- SWEATBAND IS BUILT WITH MOISTURE WICKING PROPERTIES, TO KEEP YOU FRESH AND COOL.
- CATTLEMAN CROWN
- SIDE ROLL BRIM
- UNISEX



* BONE
11722-BONE



* DARK BROWN
11722-DKBRN

MARLOW RANCHER HAT

BRIM LENGTH: 7.5cm/3"
CROWN HEIGHT: 11cm/4.25"
XS-L

\$60/\$120



DELIVERY 1

- A NEW MODERN TAKE ON A RANCHER HAT
- 100% WOOL FELT
- HARD STIFFNESS
- SIDE AND BACK PENCIL ROLL BRIM
- ADJUSTABLE VELCRO STRAP UNDER SWEATBAND
- ADJUSTABLE VELCRO STRAP UNDER SWEATBAND FOR CUSTOM FIT
- SWEATBAND IS BUILT WITH MOISTURE WICKING PROPERTIES, TO KEEP YOU FRESH AND COOL.
- GROSGRAIN BAND
- METAL HEADWEAR PLAQUE
- WOMEN'S



* COFFEE
11825-COFFE



COHEN COWBOY

COHEN COWBOY

BRIM LENGTH: 7.5cm/3"
CROWN HEIGHT: 11cm/4.25"
XS-XL

\$60/\$120

- AN EASY TO WEAR COWBOY HAT
- 100% WOOL FELT
- HARD STIFFNESS
- STRAIGHT BRIM
- TEARDROP CROWN
- ADJUSTABLE VELCRO STRAP UNDER SWEATBAND FOR CUSTOM FIT
- GROSGRAIN BAND
- METAL HEADWEAR PLAQUE
- UNISEX



DELIVERY 1



▸ BROWN
10704-BROWN



▸ MACADAMIA
10704-MCDMA

DAYTON CONVERTABRIM RANCHER HAT

BRIM LENGTH: 8cm/3"
CROWN HEIGHT: 10.5cm/4"
XS-XL

\$60/\$120

- A CLASSIC RANCHER HAT YOU CAN WEAR THREE DIFFERENT WAYS
- 100% WOOL FELT
- MEDIUM STIFFNESS
- ADAPTABLE CONVERTIBLE BRIM THAT CAN BE FLIPPED UP OR DOWN
- TEARDROP CROWN
- ADJUSTABLE VELCRO STRAP UNDER SWEATBAND FOR CUSTOM FIT
- DOUBLE GROSGRAIN BAND
- METAL HEADWEAR PLAQUE
- UNISEX



DELIVERY 1

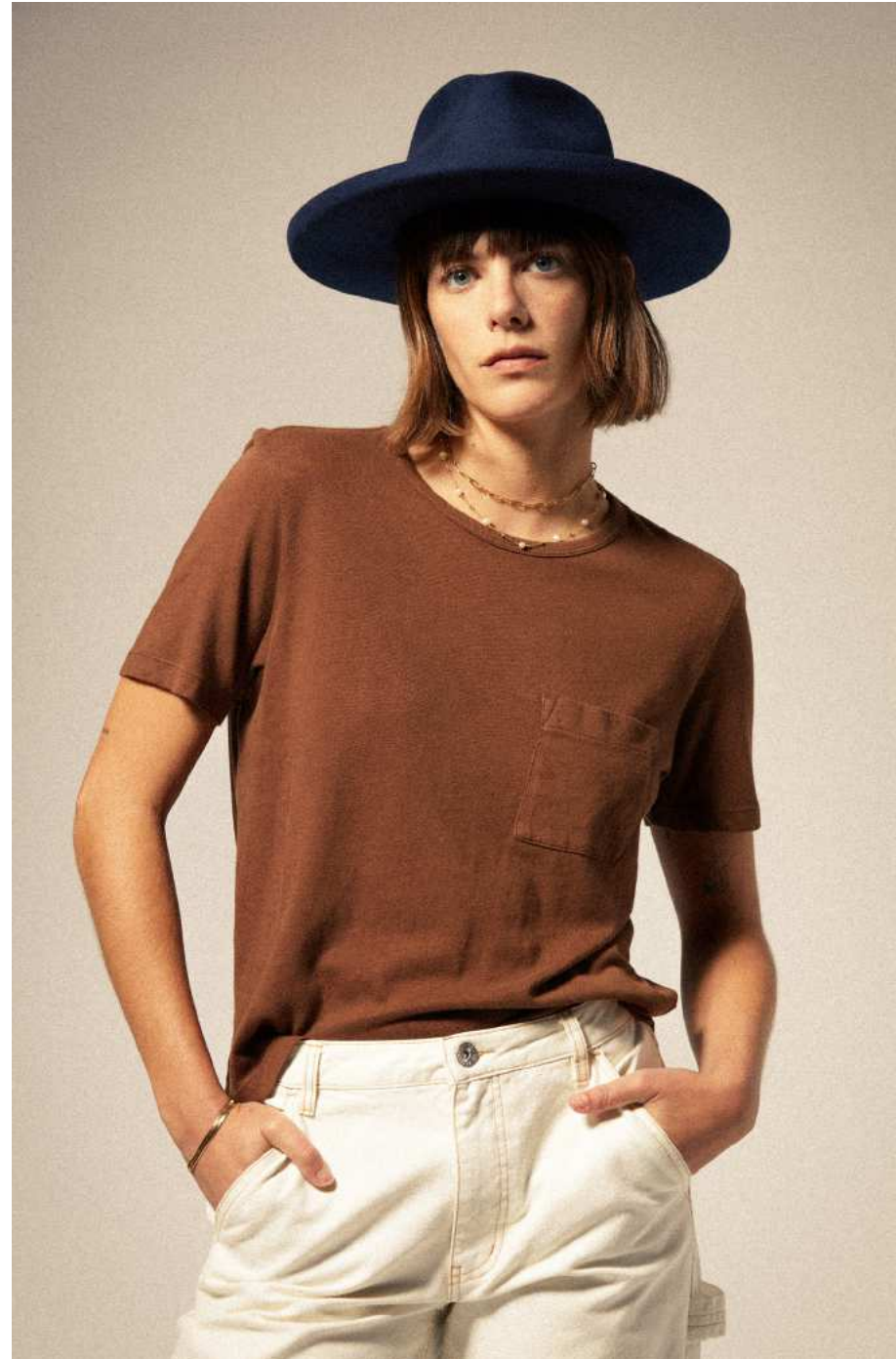


▸ GREY
11453-GREY

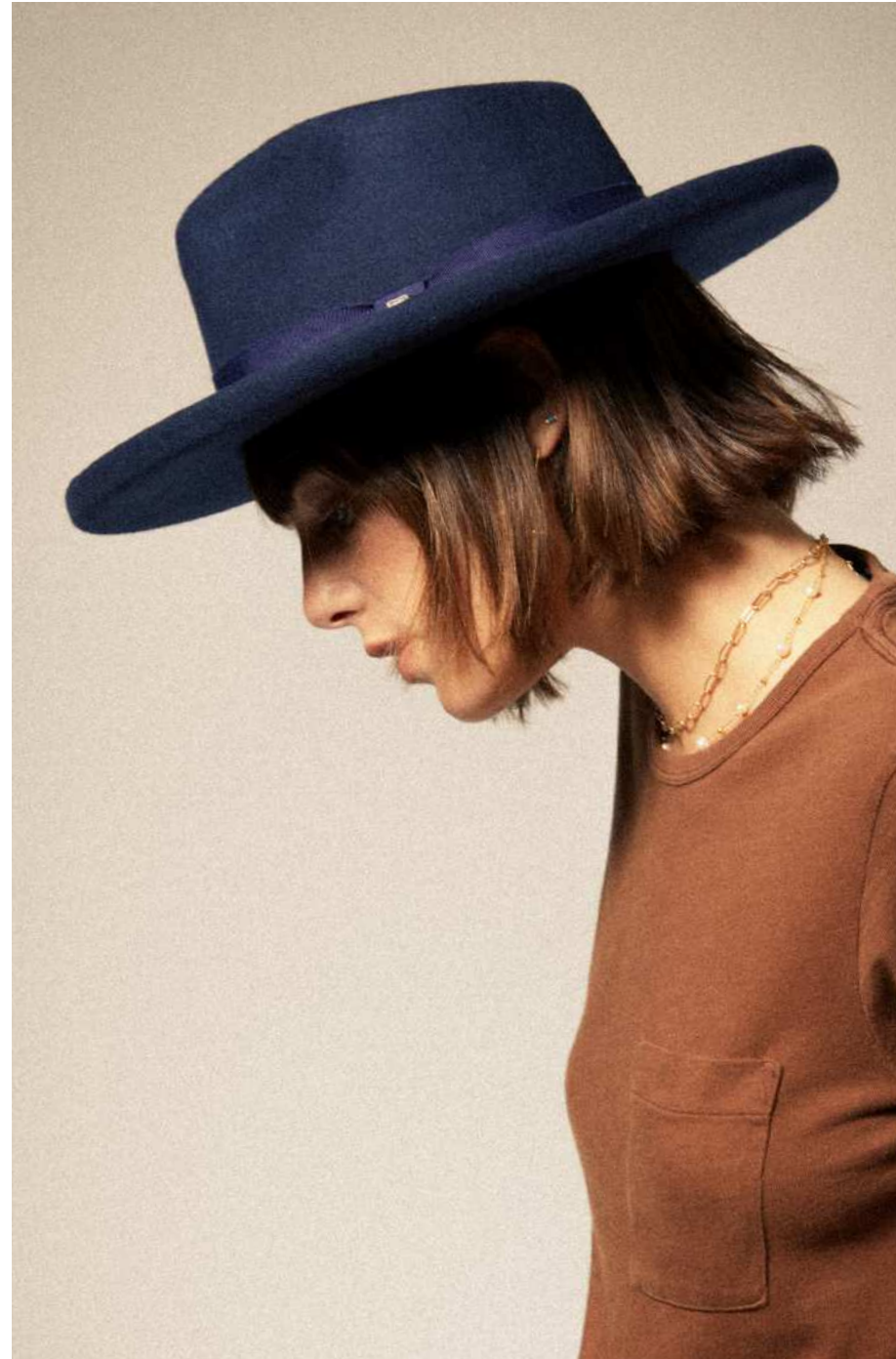


▸ DUNE
11453-DUNE





VICTORIA FELT FEDORA



VICTORIA FELT FEDORA

BRIM LENGTH: 9cm/3.5"
CROWN HEIGHT: 10cm/4"
XS-L

\$65/\$130



DELIVERY 1

- A 50'S INSPIRED FEDORA
- 100% WOOL FELT
- HARD STIFFNESS
- PENCIL ROLL BRIM
- TEARDROP CROWN
- ADJUSTABLE VELCRO STRAP UNDER SWEATBAND FOR CUSTOM FIT
- GROSGRAIN BAND
- METAL CREST PIN
- WOMEN'S



▸ MACADAMIA
11511-MCDMA



▸ WASHED NAVY
11511-WANAV

SWINDLE CONVERTABRIM FEDORA

BRIM LENGTH: 9cm/3.5"
CROWN HEIGHT: 10cm/4"
XS-XL

\$55/\$110



DELIVERY 1

- A CLASSIC 50'S INSPIRED FEDORA YOU CAN WEAR THREE DIFFERENT WAYS
- 100% WOOL FELT
- MEDIUM STIFFNESS
- ADAPTABLE CONVERTIBLE BRIM THAT CAN BE FLIPPED UP OR DOWN
- TEARDROP CROWN
- ADJUSTABLE VELCRO STRAP UNDER SWEATBAND FOR CUSTOM FIT
- GROSGRAIN BAND
- METAL HEADWEAR PLAQUE
- UNISEX



▸ DARK BROWN/ CHOCOLATE
11708-DBRCH

RENO FEDORA

BRIM LENGTH: 9cm/3.5"
CROWN HEIGHT: 11cm/4.25"
XS-XL

\$60/\$120



DELIVERY 1

- A 50'S INSPIRED FEDORA
- 100% WOOL FELT
- CROWN - LIGHT STIFFNESS
BRIM - MEDIUM STIFFNESS
- UPTICK BRIM
- TEARDROP CROWN
- ADJUSTABLE VELCRO STRAP UNDER SWEATBAND FOR CUSTOM FIT
- BRIM TAPING
- GROSGRAIN BAND
- METAL HEADWEAR PLAQUE
- UNISEX



▸ DUNE/DUNE
11040-DNEDN



▸ BONE/ SAND
11040-BONSD



ELEANOR FELT PACKABLE HAT



ELEANOR FELT PACKABLE HAT

BRIM LENGTH: 10cm/4"
CROWN HEIGHT: 10.5cm/4"
XS-L

\$50/\$100



DELIVERY 1

- A MODERN TAKE ON A FASHION SILHOUETTE
- 100% WOOL FELT
- LIGHT STIFFNESS
- TEARDROP CROWN
- DOWNTICK BRIM
- LEATHER BAND WITH METAL STUD
- ADJUSTABLE VELCRO STRAP UNDER SWEATBAND FOR CUSTOM FIT
- SWEATBAND IS BUILT WITH MOISTURE WICKING PROPERTIES, TO KEEP YOU FRESH AND COOL.
- METAL HEADWEAR PLAQUE
- WOMEN'S



▸ MACADAMIA
11836-MCDMA



▸ TAN/ TAN
11836-TANTN

MESSER PACKABLE FEDORA

BRIM LENGTH: 6.5cm/2.5"
CROWN HEIGHT: 10.5cm/4"
XS-XL

\$45/\$90



DELIVERY

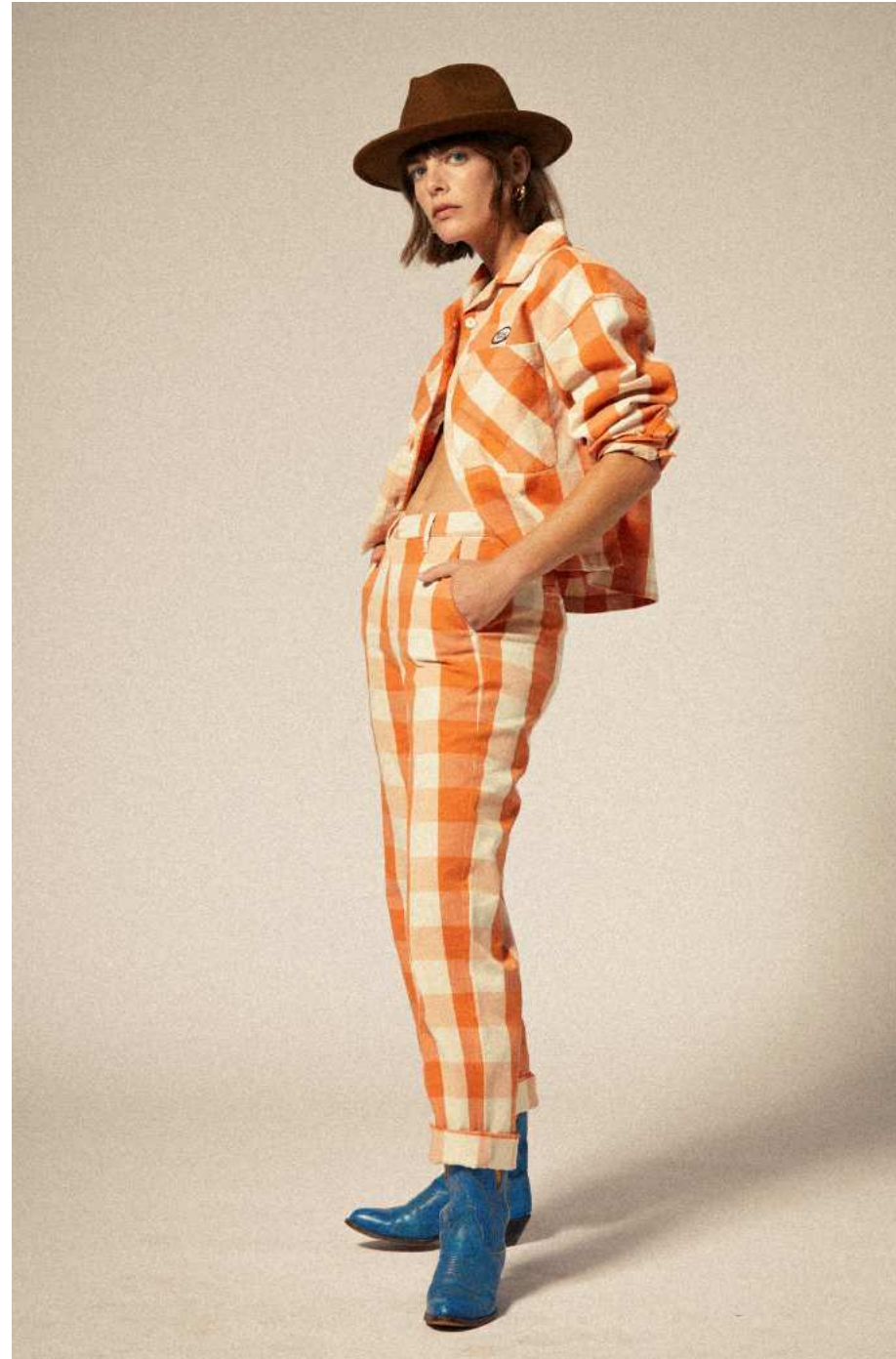
- LIGHT STIFFNESS
- 100% WOOL FELT
- STRAIGHT BRIM
- TEARDROP CROWN
- ADJUSTABLE VELCRO STRAP UNDER SWEATBAND FOR CUSTOM FIT
- GROSGRAIN BAND
- METAL CREST PIN
- UNISEX



** BLACK/ BLACK
10607-BKBLK



** TIMBERWOLF/ LIGHT BROWN
10607-TMWLB



MESSER TRADITIONAL FEDORA



MESSER FEDORA

BRIM LENGTH: 6.5cm/2.5"
CROWN HEIGHT: 10.5cm/4"
XS-XL

\$40/\$80



DELIVERY 1

- A 20'S INSPIRED CLASSIC FEDORA
- 100% WOOL FELT
- LIGHT STIFFNESS
- STRAIGHT BRIM
- TEARDROP CROWN
- ADJUSTABLE VELCRO STRAP UNDER SWEATBAND FOR CUSTOM FIT
- FAUX LEATHER BAND
- METAL CREST PIN
- UNISEX



** BLACK
10763-BLACK



** LIGHT TAN
10763-LTTAN

MESSER TRADITIONAL FEDORA

BRIM LENGTH: 6.5cm/2.5"
CROWN HEIGHT: 10.5cm/4"
XS-XL

\$45/\$90



DELIVERY 1

- A 20'S INSPIRED CLASSIC FEDORA
- 100% WOOL FELT
- LIGHT STIFFNESS
- STRAIGHT BRIM
- TEARDROP CROWN
- SWEATBAND IS BUILT WITH MOISTURE WICKING PROPERTIES, TO KEEP YOU FRESH AND COOL
- LEATHER BAND WITH TAILS
- METAL HEADWEAR PLAQUE
- UNISEX



* BRINDLE
11830-BRNDL



* COFFEE
11830-COFFE

WESLEY FEDORA

BRIM LENGTH: 6cm/2.75"
CROWN HEIGHT: 11cm/4.25"
XS-XL

\$40/\$80



DELIVERY 1

- A 20'S INSPIRED CLASSIC FEDORA
- 100% WOOL FELT
- LIGHT STIFFNESS
- STRAIGHT BRIM
- TEARDROP CROWN
- ADJUSTABLE VELCRO STRAP UNDER SWEATBAND FOR CUSTOM FIT
- LEATHER BAND
- METAL HEADWEAR PLAQUE
- UNISEX



** BLACK
10761-BLACK



** MOSS
10761-MOSS



* DUNE
10761-DUNE



GAIN FEDORA

STOUT PORK PIE

BRIM LENGTH: 4cm/1.5"
CROWN HEIGHT: 9cm/3.5"
XS-XL

\$35/\$70



DELIVERY 1

- A 20'S INSPIRED TRADITIONAL MENSWEAR FEDORA
- 100% WOOL FELT
- MEDIUM STIFFNESS
- UPTICK BRIM
- DIAMOND CROWN
- ADJUSTABLE VELCRO STRAP UNDER SWEATBAND FOR CUSTOM FIT
- SATIN BAND
- METAL CREST CLIP
- CUSTOM LINER
- UNISEX



** BLACK/ BLACK
10764-BKBLK



* SAND/ DARK SAND
10764-SNDDS

GAIN FEDORA

BRIM LENGTH: 4cm/1.5"
CROWN HEIGHT: 10cm/4"
XS-XL

\$35/\$70



DELIVERY 1

- A 20'S INSPIRED TRADITIONAL MENSWEAR FEDORA
- 100% WOOL FELT
- MEDIUM STIFFNESS
- UPTICK BRIM
- CENTER DENT CROWN
- ADJUSTABLE VELCRO STRAP UNDER SWEATBAND FOR CUSTOM FIT
- GROSGRAIN BAND
- CUSTOM LINER
- METAL CREST PIN
- UNISEX



** BLACK
10765-BLACK



* GREY/ BLACK
10765-GYBLK

ROMA FEDORA

BRIM LENGTH: 5.5cm/2.25"
CROWN HEIGHT: 10.5cm/4"
XS-XL

\$40/\$80



DELIVERY 1

- A 50'S INSPIRED SHORT BRIM FEDORA
- 100% WOOL FELT
- MEDIUM STIFFNESS
- DOWNTICK BRIM
- TEARDROP CROWN
- ADJUSTABLE VELCRO STRAP UNDER SWEATBAND FOR CUSTOM FIT
- GROSGRAIN BAND
- METAL CREST PIN
- UNISEX



* DUNE
11705-DUNE



CUT & SEW HEADWEAR

BROOD NEWSBOY CAP

XS-XL

\$25/\$50

- A 20'S INSPIRED CLASSIC NEWSBOY CAP
- 95% POLYESTER 5% WOOL
- 70% POLYESTER 30% WOOL (KHKBP)
- HERRINGBONE (BLACK, BRKHK, GYBLK)
- PLAID (KHKBP)
- CUSTOM LINER
- METAL CREST PIN



** BLACK
10770-BLACK



** BROWN/ KHAKI
10770-BRKHK



** GREY/ BLACK
10770-GYBLK



KHAKI/ BROWN PLAID
10770-KHKBP

DELIVERY 1

BROOD LIGHTWEIGHT NEWSBOY CAP

XS-XL

\$25/\$50

- A 20'S INSPIRED CLASSIC NEWSBOY CAP
- 90% POLYESTER 10% WOOL (TNMLT)
- 45% COTTON 35% LINEN 20% POLYESTER (LGWSC)
- 70% POLYESTER 30% WOOL (CBOLB)
- PLAID (TNMLT, CBLOB)
- CHAMBRAY (LGWSC)
- TAPED SEAMS
- SWEATBAND IS BUILT WITH ANTIMICROBIAL MOISTURE WICKING PROPERTIES, TO KEEP YOU FRESH AND COOL
- SEWN EYELETS
- METAL CREST PIN



TAN/ MULTI
11638-TNMLT



LIGHT GREY/ WHITE STRIPE CHAMBRAY
11638-LGWSC



CREAM/ BLACK/ ORANGE/ LIGHT BLUE
11638-CBOLB

DELIVERY 2

HOOLOGAN FLAT CAP

XS-XL

\$25/\$50

- A 20'S INSPIRED CLASSIC FLAT CAP
- 100% COTTON (BLACK)
- 95% POLYESTER 5% WOOL (BRKHK, GYBLK)
- 70% POLYESTER 30% WOOL (OFDSP)
- HERRINGBONE (BLACK, BRKHK, GYBLK)
- HOUNDSTOOTH PLAID (OFDSP)
- CUSTOM LINER
- METAL CREST PIN



** BLACK
10771-BLACK



** BROWN/ KHAKI
10771-BRKHK



** GREY/ BLACK
10771-GYBLK



* OFF WHITE/ DESERT PALM
10771-OFDSP

DELIVERY 1

HOOLOGAN LIGHTWEIGHT FLAT CAP

XS-XL

\$25/\$50

- A 20'S INSPIRED CLASSIC FLAT CAP
- 70% POLYESTER 30% WOOL (BLOWH)
- 80% SILK 20% LINEN (KHS DH)
- HOUNDSTOOTH PLAID (BLOWH)
- HERRINGBONE (KHS DH)
- TAPED SEAMS
- SWEATBAND IS BUILT WITH ANTIMICROBIAL MOISTURE WICKING PROPERTIES, TO KEEP YOU FRESH AND COOL
- SEWN EYELETS
- METAL CREST PIN

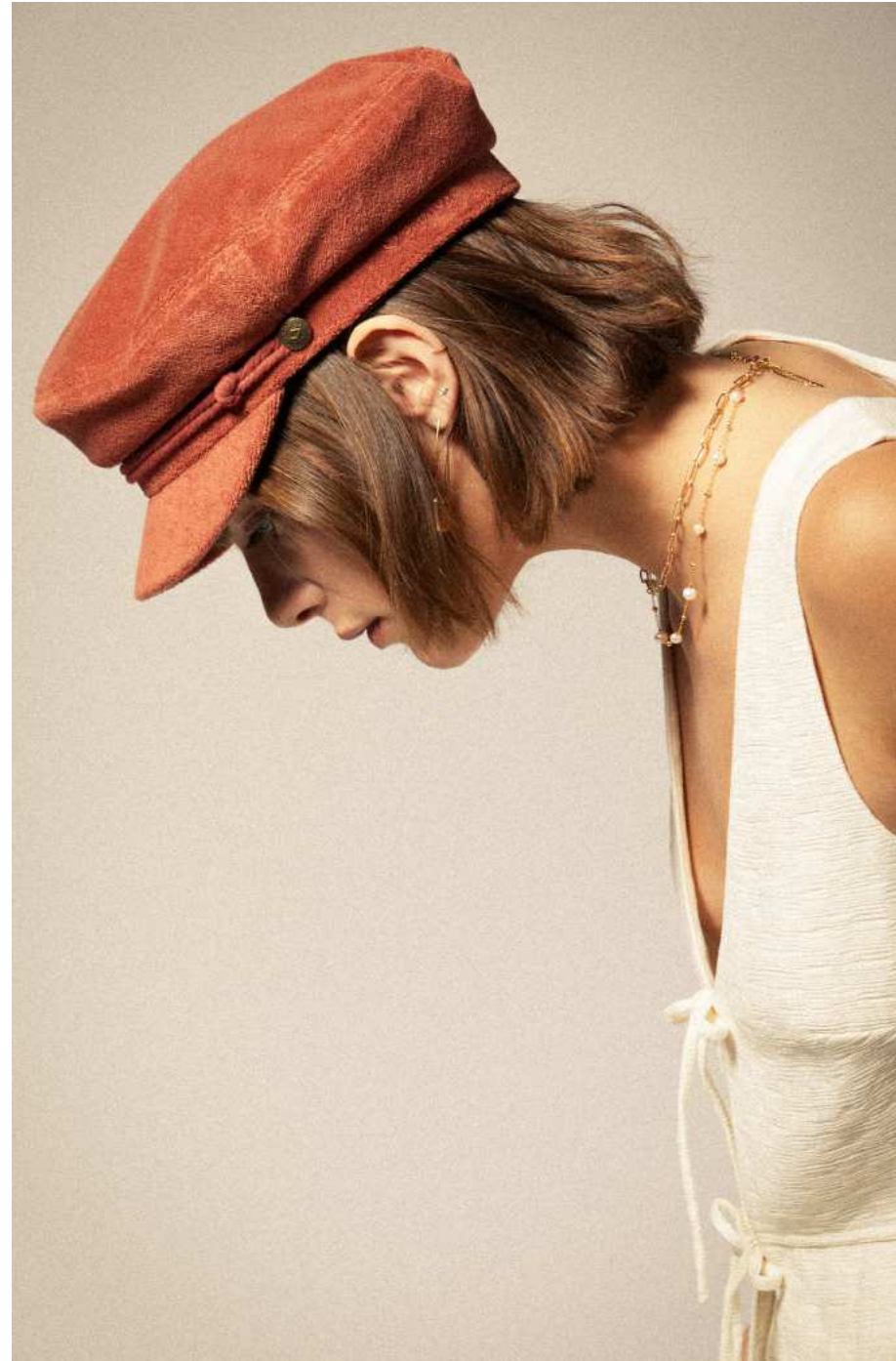


BLUE/ OFF WHITE HOUNDSTOOTH
11023-BLOWH



KHAKI/ SAND HERRINGBONE
11023-KHSDH

DELIVERY 2



FIDDLER FISHERMAN CAP

FIDDLER FISHERMAN CAP

XS-XL

\$30/\$60

- A 50'S INSPIRED CLASSIC FISHERMAN'S CAP
- 100% COTTON
- 60% COTTON 40% POLYESTER (OWBSS)
- COTTON (BLACK, EGTWH)
- TERRY CLOTH (BRBTC)
- SEERSUCKER (OWBSS)
- METAL HEADWEAR PIN



** BLACK
10772-BLACK



* EGRET WHITE
10772-EGTWH



BURNT BRICK TERRY CLOTH
10772-BRBTC



OFF WHITE/ BLUE SEERSUCKER
10772-OWBSS

DELIVERY 1



SNAPBACKS





TWO DOLLAR PISTOL NETPLUS TRUCKER HAT



RUNNING ON EMPTY ADJUSTABLE HAT

RUNNING ON EMPTY NETPLUS ADJUSTABLE HAT

LOW PROFILE =
UNSTRUCTURED
5-PANEL CURVE BILL
O/S

\$20/\$40



DELIVERY 1

- DIRECT EMBROIDERY
- 100% COTTON
- LIGHT RINSE WASH
- BUILT WITH A BUREO NETPLUS® VISOR MADE FROM RECYCLED FISHING NETS
- SWEATBAND IS BUILT WITH MOISTURE WICKING PROPERTIES, TO KEEP YOU FRESH AND COOL.
- ADJUSTABLE SELF FABRIC CLOSURE



OFF WHITE
11918-OFFWT



PANNA COTTA
11918-PNNCT

TWO DOLLAR PISTOL NETPLUS TRUCKER HAT

HIGH PROFILE =
STRUCTURED
5-PANEL CURVED BILL
O/S

\$17.50/\$35



DELIVERY 1

- DIRECT EMBROIDERY
- 100% POLYESTER
- FOAM FRONT, MESH BACK
- BUILT WITH A BUREO NETPLUS® VISOR MADE FROM RECYCLED FISHING NETS
- SWEATBAND IS BUILT WITH MOISTURE WICKING PROPERTIES, TO KEEP YOU FRESH AND COOL.
- ADJUSTABLE SNAPBACK CLOSURE



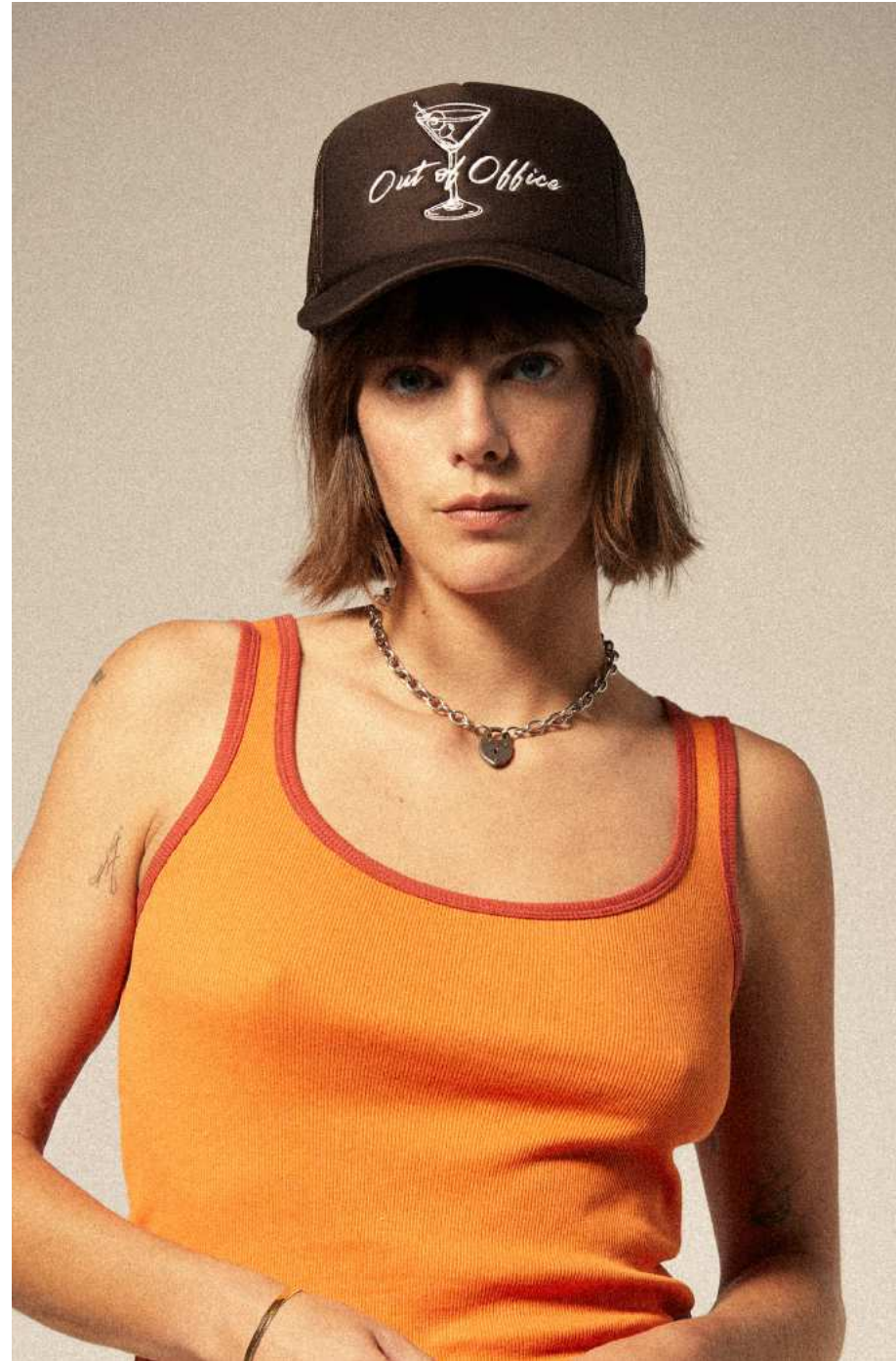
PINE NEEDLE/ PINE NEEDLE
11919-PNNPN



ELECTRIC BLUE/ ELECTRIC BLUE
11919-ELBEB



LEISURE ACTIVITY NETPLUS SNAPBACK



OUT OF OFFICE NETPLUS TRUCKER HAT

OUT OF OFFICE NETPLUS TRUCKER HAT

HIGH PROFILE =
STRUCTURED
5-PANEL CURVED BILL
O/S

\$17.50/\$35



DELIVERY 2

- SCREEN PRINT
- 100% POLYESTER
- FOAM FRONT
- MESH BACK
- BUILT WITH A BUREO NETPLUS® VISOR MADE FROM RECYCLED FISHING NETS
- SWEATBAND IS BUILT WITH MOISTURE WICKING PROPERTIES, TO KEEP YOU FRESH AND COOL.
- ADJUSTABLE SNAPBACK CLOSURE



PINECONE BROWN/ PINECONE BROWN
11920-PNBPB

LEISURE ACTIVITY NETPLUS SNAPBACK

HIGH PROFILE =
STRUCTURED
5-PANEL CURVED BILL
O/S

\$20/\$40



DELIVERY 1

- DIRECT EMBROIDERY
- 100% ORGANIC COTTON
- BUILT WITH A BUREO NETPLUS® VISOR MADE FROM RECYCLED FISHING NETS
- SWEATBAND IS BUILT WITH MOISTURE WICKING PROPERTIES, TO KEEP YOU FRESH AND COOL.
- ADJUSTABLE SNAPBACK CLOSURE



PINE NEEDLE/ WHITECAP
11921-PNNWC



DRESS BLUE/ WHITECAP
11921-DRBWC

SAVE A HORSE NETPLUS SNAPBACK

HIGH PROFILE =
STRUCTURED
5-PANEL CURVED BILL
O/S

\$20/\$40



DELIVERY 2

- DIRECT EMBROIDERY
- 100% ORGANIC COTTON
- BUILT WITH A BUREO NETPLUS® VISOR MADE FROM RECYCLED FISHING NETS
- SWEATBAND IS BUILT WITH MOISTURE WICKING PROPERTIES, TO KEEP YOU FRESH AND COOL.
- ADJUSTABLE SNAPBACK CLOSURE



CRIMSON/ OFF WHITE
11922-CRMOW

GRADE SNAPBACK

**HIGH PROFILE =
UNSTRUCTURED 6-PANEL
FLAT BILL
O/S**

\$20/\$40

- MERROWED-EDGE EMBROIDERED PATCH
- CUSTOM VINTAGE FIT
- 100% COTTON (BLOGW, DKTAN)
- 60% COTTON 40% POLYESTER (YELLOW)
- SWEATBAND IS BUILT WITH MOISTURE WICKING PROPERTIES
- ADJUSTABLE SNAPBACK CLOSURE



DELIVERY 1



* BLACK/ ORANGE/ WHITE
11697-BLOGW



DARK TAN
11697-DKTAN



YELLOW
11697-YELLW

LARGO NETPLUS ADJUSTABLE HAT

**LOW PROFILE =
UNSTRUCTURED
6-PANEL CURVE BILL
O/S**

\$20/\$40

- MERROWED-EDGE EMBROIDERED PATCH
- 71% COTTON 27% POLYESTER 2% SPANDEX
- SOFT MESH SIDE PANELS
- BUILT WITH A BUREO NETPLUS® VISOR MADE FROM RECYCLED FISHING NETS
- SWEATBAND IS BUILT WITH MOISTURE WICKING PROPERTIES, TO KEEP YOU FRESH AND COOL.
- ADJUSTABLE SNAPBACK CLOSURE



DELIVERY 1



CHARCOAL/ CHARCOAL
11789-CRLCR

RALPH NETPLUS TRUCKER HAT

**HIGH PROFILE =
UNSTRUCTURED
5-PANEL FLAT BILL
O/S**

\$17.50/\$35

- DIRECT EMBROIDERY
- 100% POLYESTER
- CUSTOM VINTAGE FIT
- COTTON CORDUROY
- SWEATBAND IS BUILT WITH MOISTURE WICKING PROPERTIES, TO KEEP YOU FRESH AND COOL.
- ADJUSTABLE SNAPBACK CLOSURE



DELIVERY 2



RED/ RED
11817-RDRED

**WOODBURN NETPLUS
ADJUSTABLE HAT**

**LOW PROFILE =
UNSTRUCTURED
6-PANEL CURVE BILL
O/S**

\$20/\$40

- WOVEN LABEL
- 100% NYLON
- LIGHT WEIGHT NYLON
- BUILT WITH A BUREO NETPLUS® VISOR MADE FROM RECYCLED FISHING NETS
- SWEATBAND IS BUILT WITH MOISTURE WICKING PROPERTIES, TO KEEP YOU FRESH AND COOL.
- SELF FABRIC CLOSURE



DELIVERY 1



BLACK NYLON
11588-BLKNY



IVY GREEN NYLON
11588-IVGNY



SAND NYLON
11588-SNDNN

ALPHA NETPLUS ADJUSTABLE HAT

**LOW PROFILE =
UNSTRUCTURED
6-PANEL CURVED BILL
O/S**

\$20/\$40

- DIRECT EMBROIDERY
- 100% COTTON
- LIGHT RINSE WASH
- BUILT WITH A BUREO NETPLUS® VISOR MADE FROM RECYCLED FISHING NETS
- SWEATBAND IS BUILT WITH MOISTURE WICKING PROPERTIES, TO KEEP YOU FRESH AND COOL.
- ADJUSTABLE SELF FABRIC CLOSURE



DELIVERY 1



BLACK/ WHITE RINSE
11776-BLKWR



SUNBAKED RINSE
11776-SNBRS



DEEP FORSET RINSE
11776-DPFRR



INWOOD SNAPBACK



INWOOD SNAPBACK

MEDIUM PROFILE =
UNSTRUCTURED
5-PANEL SLIGHT CURVE BILL
O/S

\$20/\$40

- DIRECT EMBROIDERY
- 100% COTTON
- COTTON CORDUROY
- PRE CURVE VISOR
- SWEATBAND IS BUILT WITH MOISTURE WICKING PROPERTIES, TO KEEP YOU FRESH AND COOL
- ADJUSTABLE SNAPBACK CLOSURE



DELIVERY 1



RED
11791-RED

KELLER SNAPBACK

MEDIUM PROFILE =
UNSTRUCTURED
5-PANEL FLAT BILL
O/S

\$20/\$40

- DIRECT EMBROIDERY
- 60% COTTON 40% POLYESTER
- SWEATBAND IS BUILT WITH MOISTURE WICKING PROPERTIES, TO KEEP YOU FRESH AND COOL
- ADJUSTABLE SNAPBACK CLOSURE



DELIVERY 1



BLACK
11792-BLACK

THE LEAGUE SNAPBACK

MEDIUM PROFILE =
UNSTRUCTURED
5-PANEL FLAT BILL
O/S

\$20/\$40

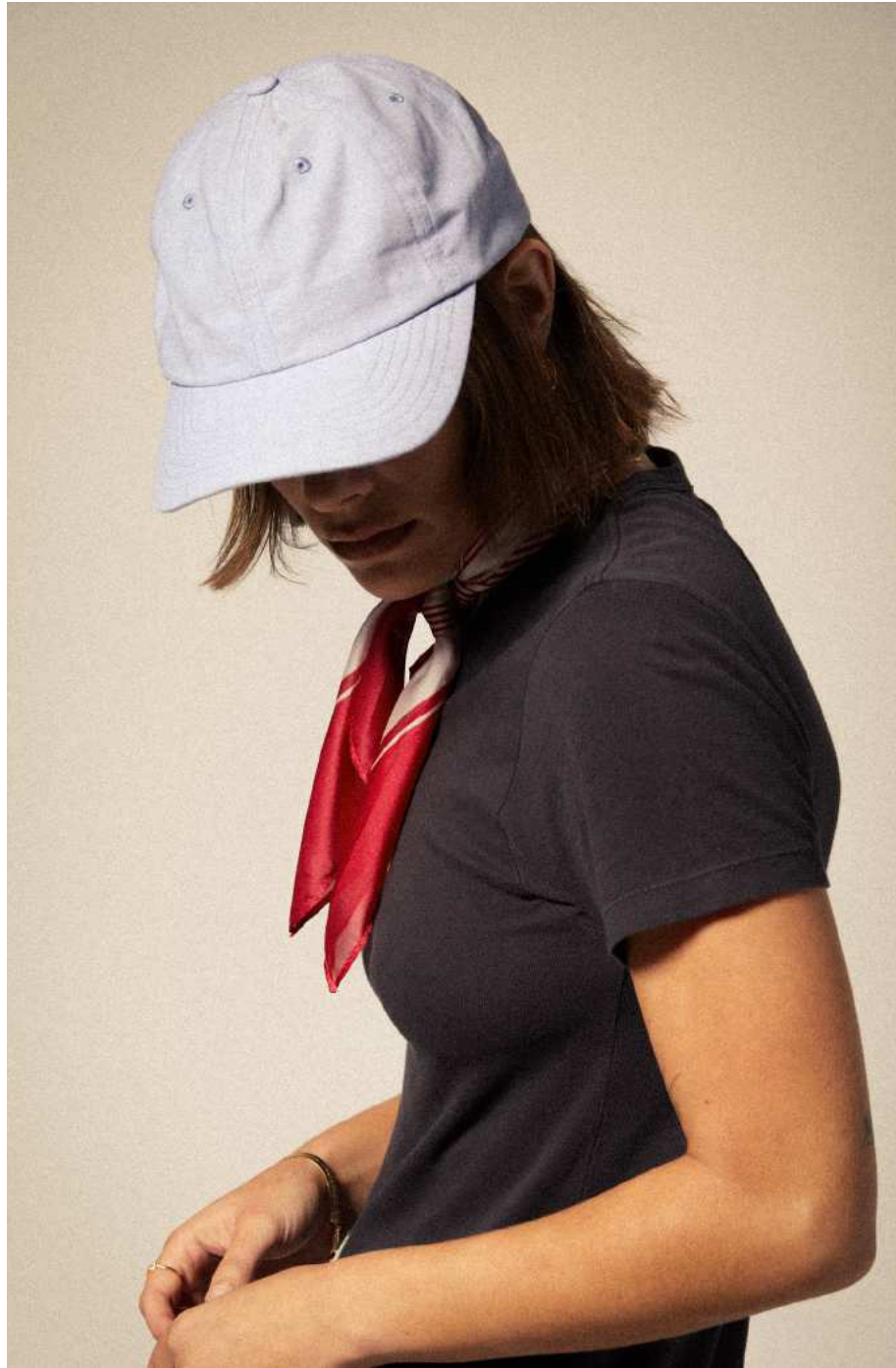
- DIRECT EMBROIDERY
- 100% COTTON
- SWEATBAND IS BUILT WITH MOISTURE WICKING PROPERTIES, TO KEEP YOU FRESH AND COOL
- ADJUSTABLE SNAPBACK CLOSURE



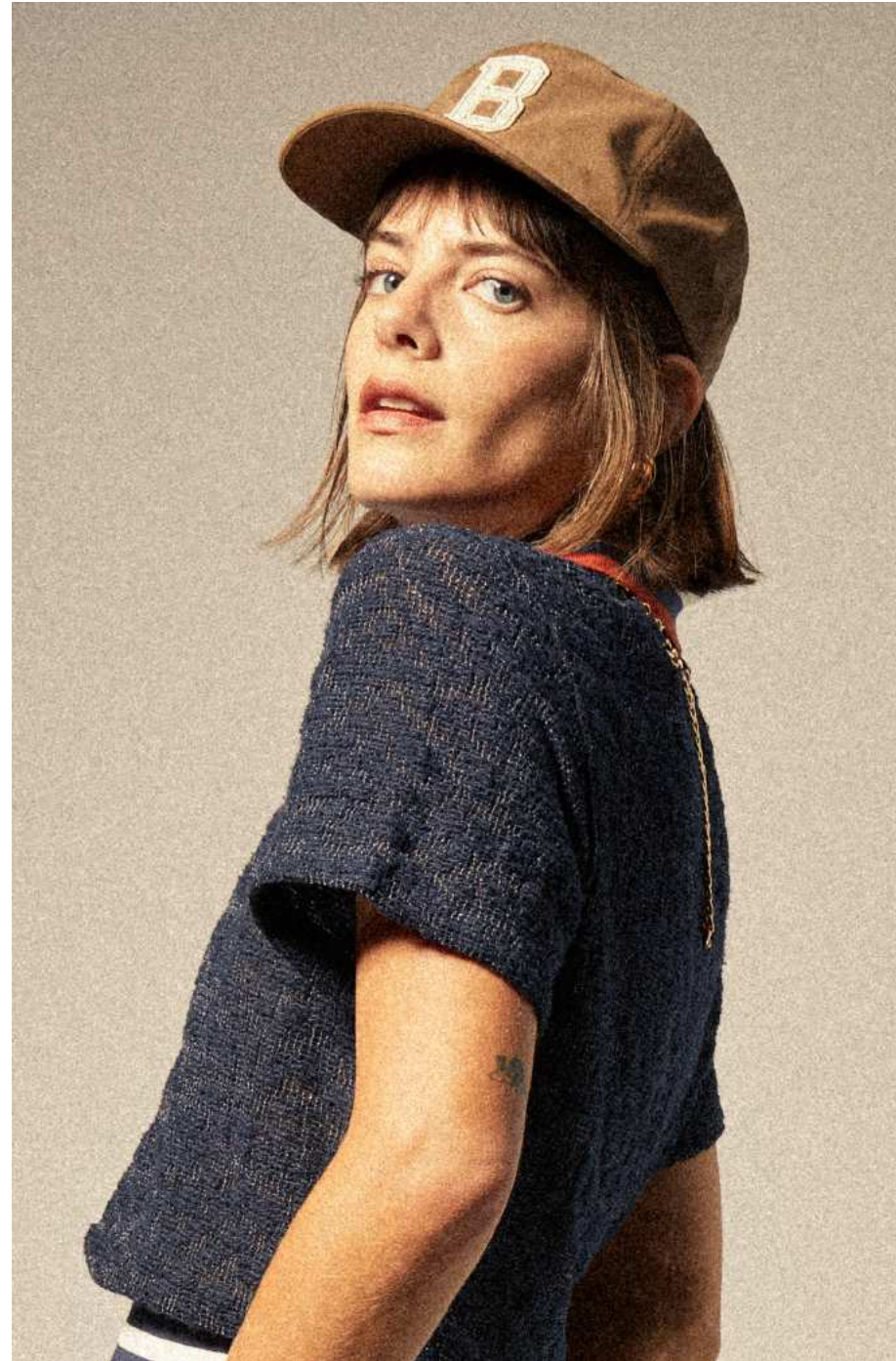
DELIVERY 1



BLACK/ OFF WHITE
11793-BKOFF



SHELBY ADJUSTABLE HAT



BIG B ADJUSTABLE HAT

BIG B ADJUSTABLE HAT

MEDIUM PROFILE =
UNSTRUCTURED
6-PANEL CURVED BILL
O/S

- FELT PATCH
- 100% COTTON
- LIGHT WEIGHT FLANNEL (DPFRF)
- BRUSHED COTTON (PNBRT)
- SWEATBAND IS BUILT WITH MOISTURE WICKING PROPERTIES, TO KEEP YOU FRESH AND COOL.
- ADJUSTABLE LEATHER STRAP CLOSURE

\$22.50/\$45



DELIVERY 1



DEEP FOREST FLANNEL
11158-DPFRF



PINECONE BROWN TWILL
11158-PNBRT

SHELBY ADJUSTABLE HAT

MEDIUM PROFILE =
UNSTRUCTURED
6-PANEL CURVED BILL
O/S

- FLAG LABEL AT BACK CLOSURE
- 100% COTTON
- COTTON HERRINGBONE (OLHBN)
- OXFORD CHAMBRAY (LBLCH)
- BUILT WITH A BUREO NETPLUS® VISOR MADE FROM RECYCLED FISHING NETS
- SWEATBAND IS BUILT WITH MOISTURE WICKING PROPERTIES, TO KEEP YOU FRESH AND COOL.
- ADJUSTABLE SELF FABRIC CLOSURE

\$22.50/\$45



DELIVERY 1



OLIVE HERRINGBONE
11721-OLHBN



LIGHT BLUE CHAMBRAY
11721-LBLCH



BEANIES



Your purchase of this fair trade certified product helps support working conditions and fundamental human rights, while also investing in social development.

HEIST BEANIE

HEIGHT WITH CUFF UP: 8"
 OPENING: 7"
 O/S

- CLASSIC FISHERMAN'S BEANIE
- 100% ACRYLIC
- WOVEN FOLD LABEL
- 1X1 KNIT

\$12.50/\$25



DELIVERY 1



* COYOTE BROWN
 10782-COYOT



* DARK DENIM
 10782-DKDEN



* WOODSMOKE
 10782-WODSK



* BLACK
 10782-BLACK



* HEATHER GREY
 10782-HTGRY



* SAUTERNE YELLOW
 10782-STRYW



* MILITARY OLIVE
 10782-MILOL



* COPPER
 10782-COPPR



* WHITE
 10782-WHITE



* DARK FOREST
 10782-DRKFO



* BEIGE
 10782-BEIGE



* RED
 10782-RED



* DUSK
 10782-DUSK



* BROWN
 10782-BROWN

WOODBURN WATCH CAP BEANIE

HEIGHT WITH CUFF UP: 8.5"
 OPENING: 7"
 O/S

- CLASSIC FISHERMAN'S BEANIE
- 100% ACRYLIC
- WOVEN LABEL
- 1X1 TIGHT KNIT

\$15/\$30



* EMERALD
 11508-EMRLD



* WASHED BLACK
 11508-WABLK



* BISCOTTI
 11508-BSCTI



* RUST ORANGE
 11508-RSTOG



* NAVY
 11508-NAVY



* ROSE GOLD
 11508-ROSGD

DELIVERY 1



DONE PROPER FEDORA TRAVEL CASE

O/S

\$90/\$180

- 32 LITERS
- 100% ETHYLENE VINYL ACETATE
- LEATHER PATCH DETAILS
- FITS MOST WIDE BRIM HATS
- DWR AND SCOTCHGUARD COATINGS



* GREY/ BLACK
05509-GYBLK



* CREAM/ BEIGE
05509-CRMBG

DELIVERY 1

PROPER HAT CLIP

O/S

\$15/\$30

- WORKS ON ALL BRIXTON HEADWEAR
- 100% METAL
- CARABINER CLIP



* BLACK
05541-BLACK



* SAND
05541-SAND

DELIVERY 1

HAT BRUSH

O/S

\$10/\$20

- 100% WOOD
- BRIXTON LOGO
- NYLON WEBBING



* BLACK
05378-BLACK

DELIVERY 1

BRIXTON HAT FEATHER

O/S

\$5/\$10

- 100% BIRD FEATHER



* WHITE/ BLACK
05515-WHBLK



* BISON/ MOJAVE/ BURNT ORANGE
05515-BSMBO



* BURNT ORANGE/ BLACK/ MAHOGANY
05515-BTOBM

DELIVERY 1



BABY HEIST BEANIE

O/S

\$10/\$20

- 100% ACRYLIC
- WOVEN FOLD LABEL
- 1X1 KNIT



*BLACK
11207-BLACK



*JOE BLUE
11207-JOBLU



*LIGHT HEATHER GREY
11207-LHTGY



*MILITARY OLIVE
11207-MILOL



DELIVERY 1
*MUSTARD
11207-MUSTR



*ATHLETIC ORANGE
11207-ATHOR

BABY FIDDLER CAP

O/S

\$25/\$50

- 100% COTTON
- DIRECT EMBROIDERY



*BLACK
11223-BLACK

DELIVERY 1

BABY BROOD SNAP CAP

O/S

\$25/\$50

- 100% COTTON
- DIRECT EMBROIDERY



*BLACK
11111-BLACK



*BROWN/KHAKI
11111-BRKHK

DELIVERY 1

BABY MESSER FEDORA

O/S

\$30/\$60

- 100% WOOL FELT
- FAUX LEATHER BAND
- LIGHT STIFFNESS
- DEBOSSSED CREST



*BLACK
11220-BLACK

DELIVERY 1



WOMEN'S APPAREL





TRAIL TERRY CLOTH TRUCKER JACKET

STANDARD

XS-XL

\$60/\$120

- 20" HPS
- 80% COTTON
- 20% POLY TERRY CLOTH
- 350GSM TERRY CLOTH

- YARN DYED PATTERN
- CENTER FRONT
- BUTTON CLOSURE



ELECTRONIC INDIGO PATTERN
03458-ELCIP

MESH DRESS

STANDARD

XS-XL

\$60/\$120

- 58" HPS
- 72% COTTON 25% POLYESTER
- 3% SPANDEX

- 330GSM COTTON
- POLY SPANDEX MESH



WASHED NAVY
30016-WANAV



RETRO MESH S/S POLO

STANDARD

XS-XL

\$50/\$100

- 20" HPS
- 72% COTTON 25% POLYESTER 3% SPANDEX
- 330GSM COTTON POLY SPANDEX MESH

- RIBBED COLLAR AND BOTTOM OPENING
- 3 BUTTON CENTER FRONT RIBBED PLACKET



WASHED NAVY
22752-WANAV

TRAIL TERRY CLOTH SHORT

STANDARD

XS-XL

\$30/\$60

- 3" INSEAM
- 80% COTTON 20% POLY TERRY CLOTH
- 250GSM TERRY CLOTH

- YARN DYED PATTERN
- ELASTIC WAISTBAND WITH DRAWCORD



ELECTRONIC INDIGO PATTERN
30015-ELCIP



RINGER ORGANIC A-TANK

SLIM

XS-XL
\$20/\$40

- 19" HPS
- 100% ORGANIC COTTON
- ORGANIC COTTON RIB
- LOGO FLAG LABEL
- CONTRAST BINDING



* BLACK/ OFFWHITE
22755-BKOFF

LUDLOW TROUSER PANT

RELAXED

24-31

- 100% COTTON (BLACK)
- 55% LINEN 45% RAYON (OFFWH)
- 65% POLYESTER 33% RAYON 2% SPANDEX (GRYSS)
- 55% LINEN 45% RAYON (OFFWH)
- 31" INSEAM
- 20" LEG OPENING
- 12" HIGH RISE
- PLEATED FRONT
- POCKET LABEL



OFF WHITE
04984-OFFWH

\$45/\$90



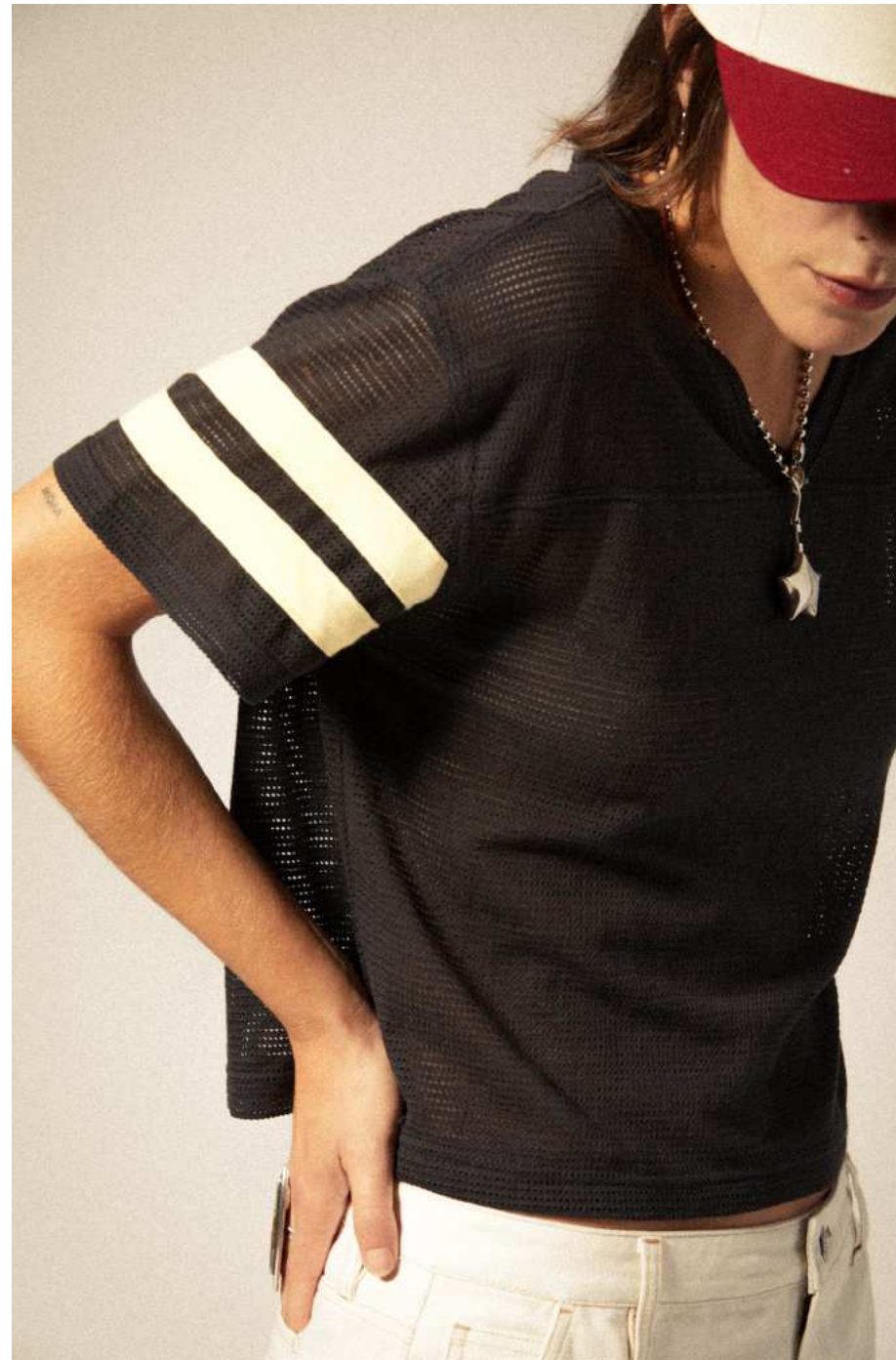
GREY SUITING STRIPE
04984-GRYSS

\$50/\$100



* * BLACK
04984-BLACK

\$45/\$90



VARSITY FOOTBALL MESH TEE

STANDARD

XS-XL

\$25/\$50

- 20" HPS
- 60% COTTON 40% POLYESTER
- 125GSM COTTON MESH
- SET IN COLLAR
- FRONT YOKE
- WOVEN WOODBURN LABEL
- STRIPE DETAILING ON SLEEVES



WASHED BLACK
22750-WABLK

CROSS LOOP FT HOODIE

RELAXED

XS-XL

\$55/\$110

- 23" HPS
- 100% COTTON
- 360GSM BCI COTTON CROSS LOOP FRENCH TERRY
- GARMENT DYED
- DROP SHOULDER
- KANGAROO PATCH POCKET
- DRAWCORD IN HOOD
- WOVEN WOODBURN LABEL



PANNA COTTA
22687-PNNCT

ESSEX PAINTER MINI SKIRT

STANDARD

24-31

\$45/\$90

- 13" OUTSEAM
- 100% COTTON
- 350GSM COTTON CANVAS
- PATCH POCKETS
- HAMMER LOOP
- WOVEN WOODBURN LABEL
- CONTRAST STITCHING



EGRET WHITE
30021-EGTWH



AZURE BLUE/ WHITECAP PLAID
01424-AZBWP

**BOWERY W CLASSIC
FLANNEL**

RELAXED

XS-XL \$45/\$90

- 28" HPS
- 60% COTTON 23% POLYESTER
17% ACRYLIC
- SIGNATURE ANTI-SCRATCH, WOOL
FREE, VEGAN FLANNEL
- PATCH POCKETS
- WOVEN WOODBURN LABEL
- CLASSIC BOYFRIEND FIT



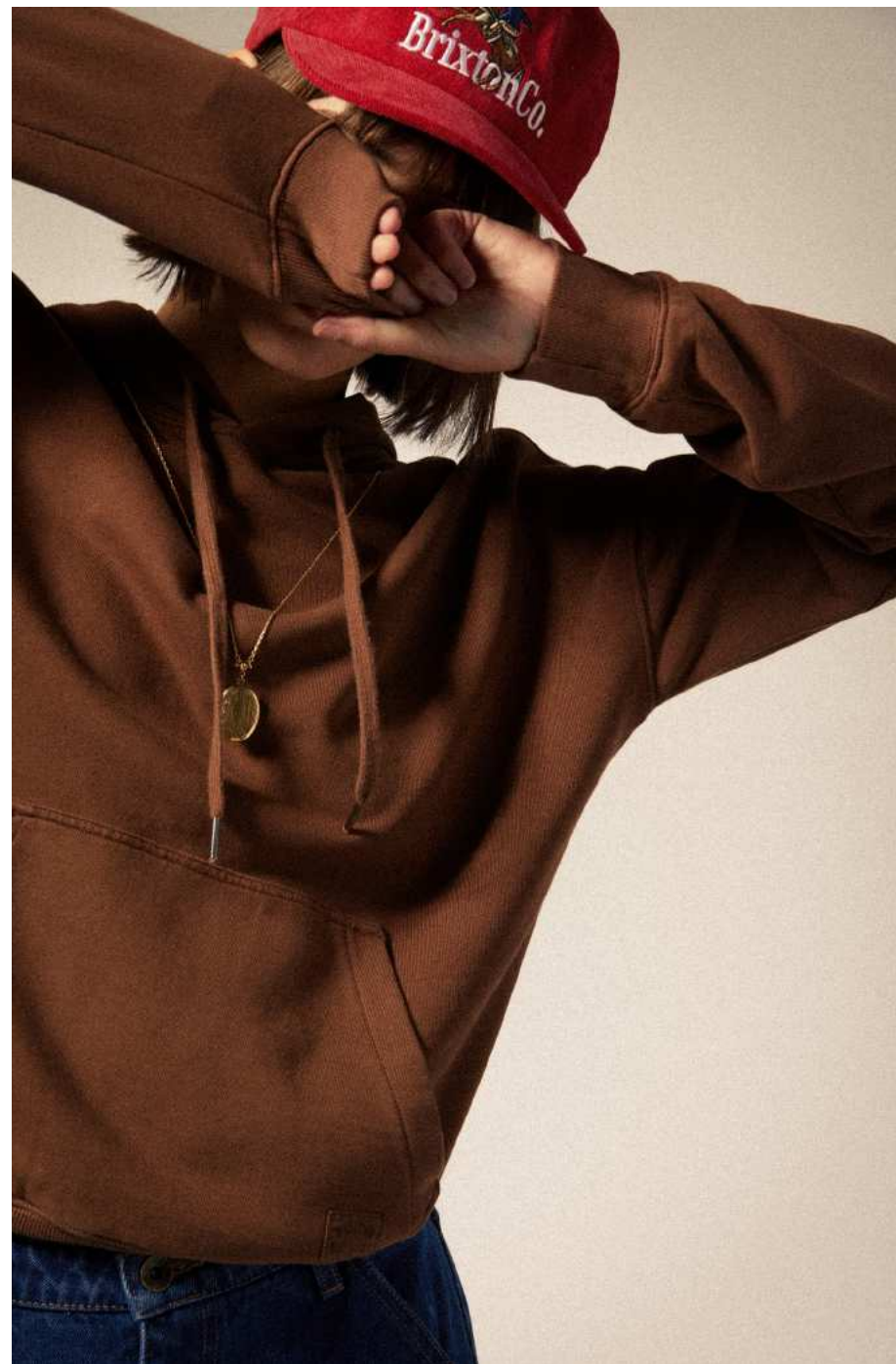
PINECONE BROWN
30013-PNCBN

THE RIDGE SLIP DRESS

STANDARD

XS-XL \$60/\$120

- 50" HPS
- 52% VISCOSE 48% RAYON
- 96GSM RAYON
- LACE DETAILING FROM
BUST AND STRAPS
- SIDE SEAM ZIPPER



EGRET WHITE
03457-EGTWH

MECHANICS W GARAGE ZIP JACKET

STANDARD

XS-XL \$65/\$130

- 21.5" HPS
- 100% COTTON
- 350GSM COTTON CANVAS
- CORDUROY COLLAR
- METAL CENTER ZIPPER
- WOVEN WOODBURN LABEL



PINECONE BROWN
22687-PNCBN

CROSS LOOP FT HOODIE

RELAXED

XS-XL \$55/\$110

- 23" HPS
- 100% COTTON
- 360GSM BCI COTTON CROSS LOOP FRENCH TERRY
- GARMENT DYED
- DROP SHOULDER
- KANGAROO PATCH POCKET
- DRAWCORD IN HOOD
- WOVEN WOODBURN LABEL



MEDIUM DENIM
04987-MDMDN

ESSEX PAINTER PANT

RELAXED

24-31 \$55/\$110

- 3.5OZ COTTON DENIM (MDMDN)
- 100% COTTON
- 350GSM COTTON CANVAS (EGTWH)
- 31" INSEAM
- 18" LEG OPENING
- 10.5" MID RISE
- UTILITY POCKETS
- HAMMER LOOP
- WOVEN WOODBURN LABEL





THE MEADOW BLOUSE

RELAXED

XS-XL \$40/\$80

- 22" HPS
- 100% RAYON
- 145GSM SEERSUCKER (AZBGH)
- 193GSM LINEN RAYON (OFFWH)

- CENTER FRONT BUTTON PLACKET
- BALLOON SLEEVES WITH ELASTIC



AZURE BLUE GINGHAM
01460-AZBGH

HUDSON LOUNGE PANT

RELAXED

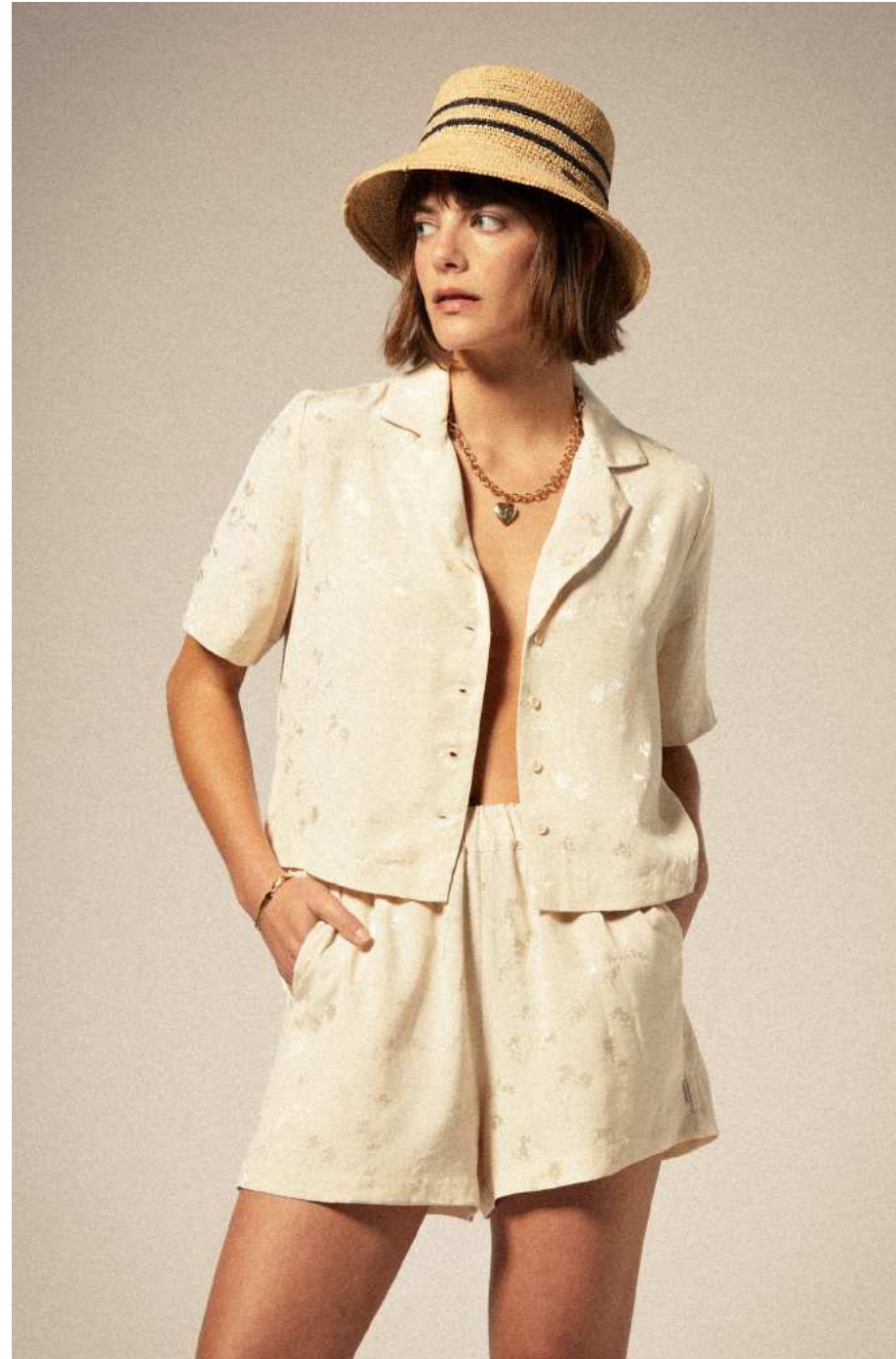
XS-XL \$40/\$80

- 100% RAYON
- 31" INSEAM
- 11" LEG OPENING
- 11.5" HIGH RISE

- 145GSM SEERSUCKER
- ELASTIC WAISTBAND WITH DRAWCORD
- FRONT HAND POCKETS



AZURE BLUE GINGHAM
04991-AZBGH



LAKEVIEW TOP

STANDARD

XS-XL \$55/\$110

- 21" HPS
- 90% VISCOSE 10% NYLON
- 190GSM VISCOSE NYLON
- CENTER FRONT TIE CLOSURE



OFF WHITE
01461-OFFWH

SILKY S/S JACQUARD BUTTON DOWN

RELAXED

XS-XL \$45/\$90

- 20" HPS
- 55% VISCOSE 45% RAYON
- 175GSM VISCOSE SATIN
- CAMP COLLAR

- CENTER FRONT BUTTON PLACKET
- TONAL FLORAL DESIGN



WHITECAP FLORAL JACQUARD
01459-WHCFJ

ESSEX PAINTER PANT

RELAXED

24-31 \$55/\$110

- 350GSM COTTON CANVAS
- 100% COTTON
- 31" INSEAM
- 18" LEG OPENING

- 10.5" MID RISE
- UTILITY POCKETS
- HAMMER LOOP
- WOVEN WOODBURN LABEL



EGRET WHITE
04987-EGTWH

SILKY JACQUARD SHORT

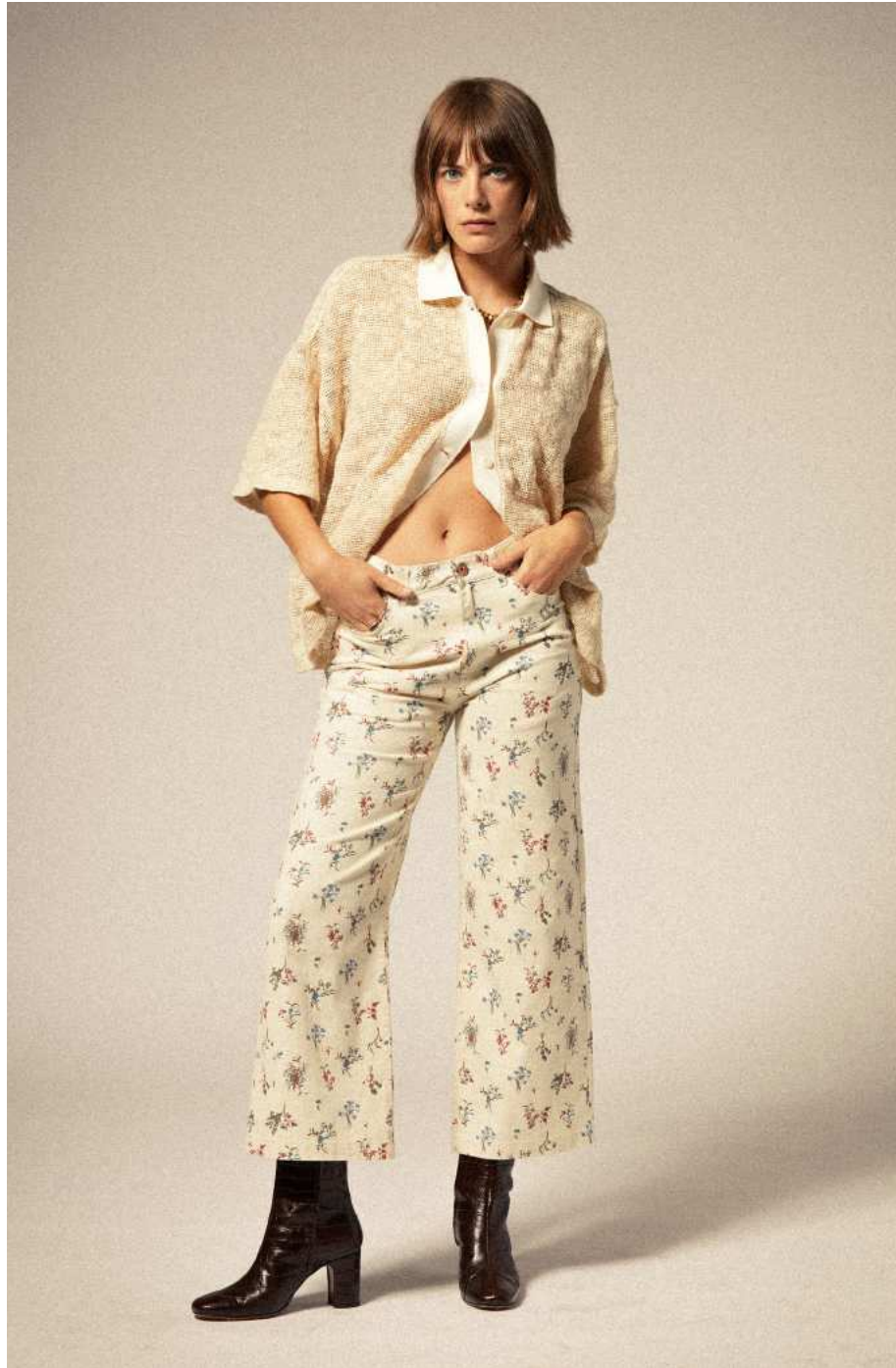
STANDARD

XS-XL \$40/\$80

- 3" INSEAM
- 55% VISCOSE 45% RAYON
- 175GSM VISCOSE SATIN
- ELASTIC WAISTBAND
- FRONT HAND POCKETS
- TONAL FLORAL DESIGN



WHITECAP FLORAL JACQUARD
30012-WHCFJ



CAMP MESH BUTTON DOWN S/S

RELAXED
XS/S, M/L

\$50/\$100

- 24" HPS
- 72% COTTON 25% POLYESTER
3% SPANDEX
- 330GSM COTTON POLY
SPANDEX MESH
- CENTER FRONT RIBBED
PLACKET AND COLLAR



OFF WHITE
22753-OFFWH

MARGO CROPPED 5 POCKET PANT

STANDARD
24-31

\$60/\$120

- 275 GSM COTTON TWILL
- 100% COTTON
- 26" INSEAM
- 21" LEG OPENING
- 11" HIGH RISE
- 5 POCKET
- ZIPPER FLY



WHITECAP
04985-WHTCP



OFF WHITE
01460-OFFWH

THE MEADOW BLOUSE

RELAXED

XS-XL \$40/\$80

- 22" HPS
- 55% LINEN 45% RAYON
- 193GSM LINEN RAYON
- CENTER FRONT BUTTON PLACKET
- BALLOON SLEEVES WITH ELASTIC



WHITECAP/ HAZELNUT/ DITSY FLORAL
03459-WCHDF

FIELD FLORAL QUILTED VEST

STANDARD

XS-XL \$45/\$90

- 20.5" HPS
- 100% COTTON
- 120GSM COTTON POPLIN
- QUILTED WITH A LIGHT FILL
- PATCH POCKETS
- WOVEN WOODBURN LABEL



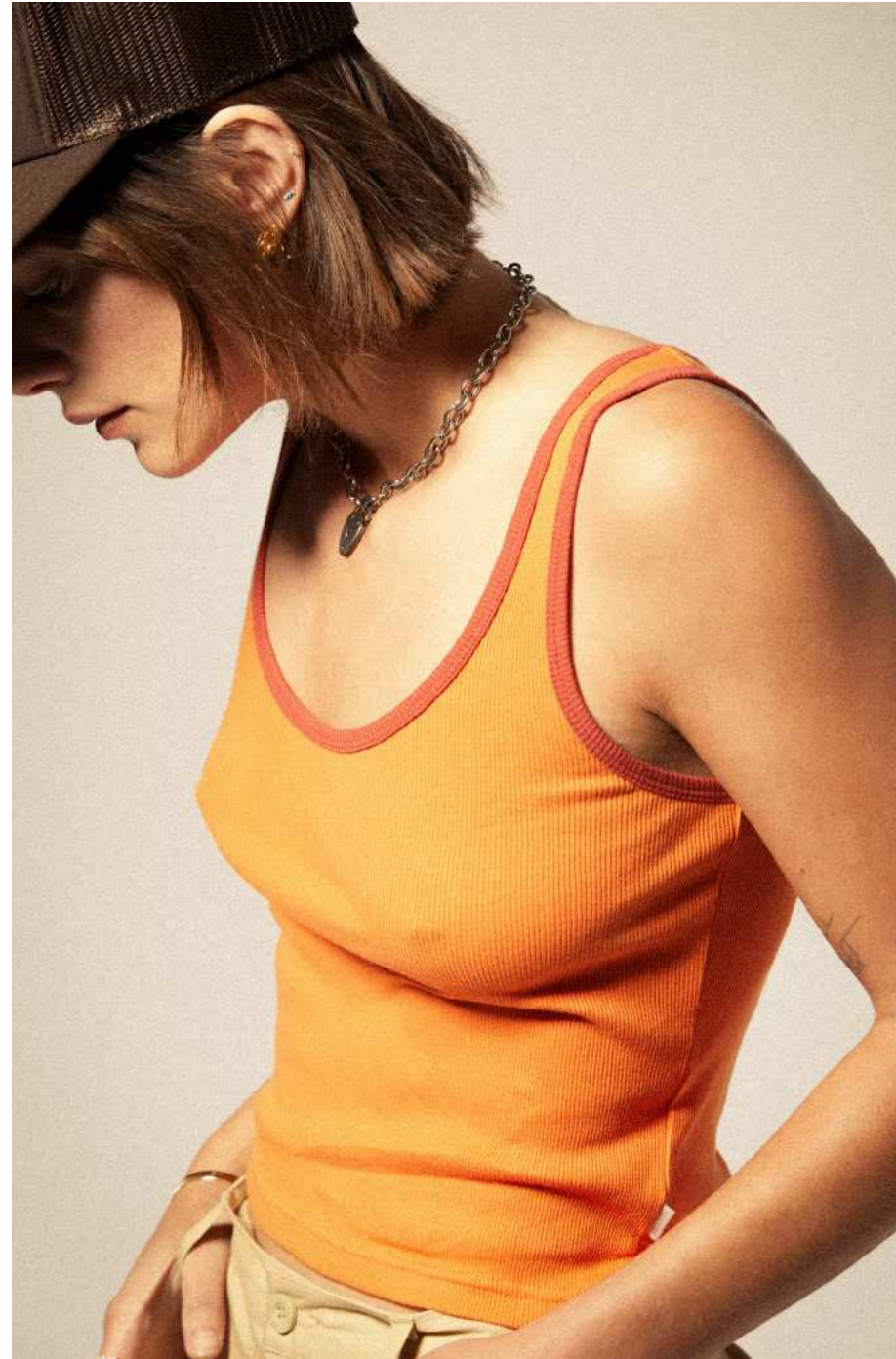
LIGHT DENIM
04985-LTDEN

MARGO CROPPED 5 POCKET PANT

STANDARD

24-31 \$60/\$120

- 100% COTTON
- 13.5OZ COTTON DENIM
- 26" INSEAM
- 21" LEG OPENING
- 11" HIGH RISE
- 5 POCKET
- ZIPPER FLY



BOWERY W CLASSIC FLANNEL

RELAXED

XS-XL

\$45/\$90

- 28" HPS
- 60% COTTON 23% POLYESTER 17% ACRYLIC
- SIGNATURE ANTI-SCRATCH, WOOL FREE, VEGAN FLANNEL

- PATCH POCKETS
- WOVEN WOODBURN LABEL
- CLASSIC BOYFRIEND FIT



SAND/ BURNT BRICK/
BLACK PLAID
01424-SBBBP

OFF WHITE/ SEMOLINA/
WASHED COPPER PLAID
01424-OWSWC



TANGERINE/ BURNT BRICK
22755-TGRBB

RINGER ORGANIC A-TANK

SLIM

XS-XL \$20/\$40

- 19" HPS
- 100% ORGANIC COTTON
- ORGANIC COTTON RIB
- LOGO FLAG LABEL
- CONTRAST BINDING



PALE KHAKI
04986-PLKHK

VINTAGE MILITARY LW PANT

RELAXED

24-31 \$45/\$90

- 175 GSM RIPSTOP
- 56% COTTON 26% REPREVE POLYESTER 18% NYLON
- 31" INSEAM
- 22" LEG OPENING
- 11" HIGH RISE
- HEAVY WASH
- SURPLUS PATCH POCKETS
- LOGO BUTTON



VARSITY FOOTBALL MESH TEE

STANDARD

XS-XL **\$25/\$50**

- 20" HPS
- 60% COTTON 40% POLYESTER
- 125GSM COTTON MESH
- SET IN COLLAR
- FRONT YOKE
- WOVEN WOOBURN LABEL
- STRIPE DETAILING ON SLEEVES



WHITECAP
22750-WHTCP



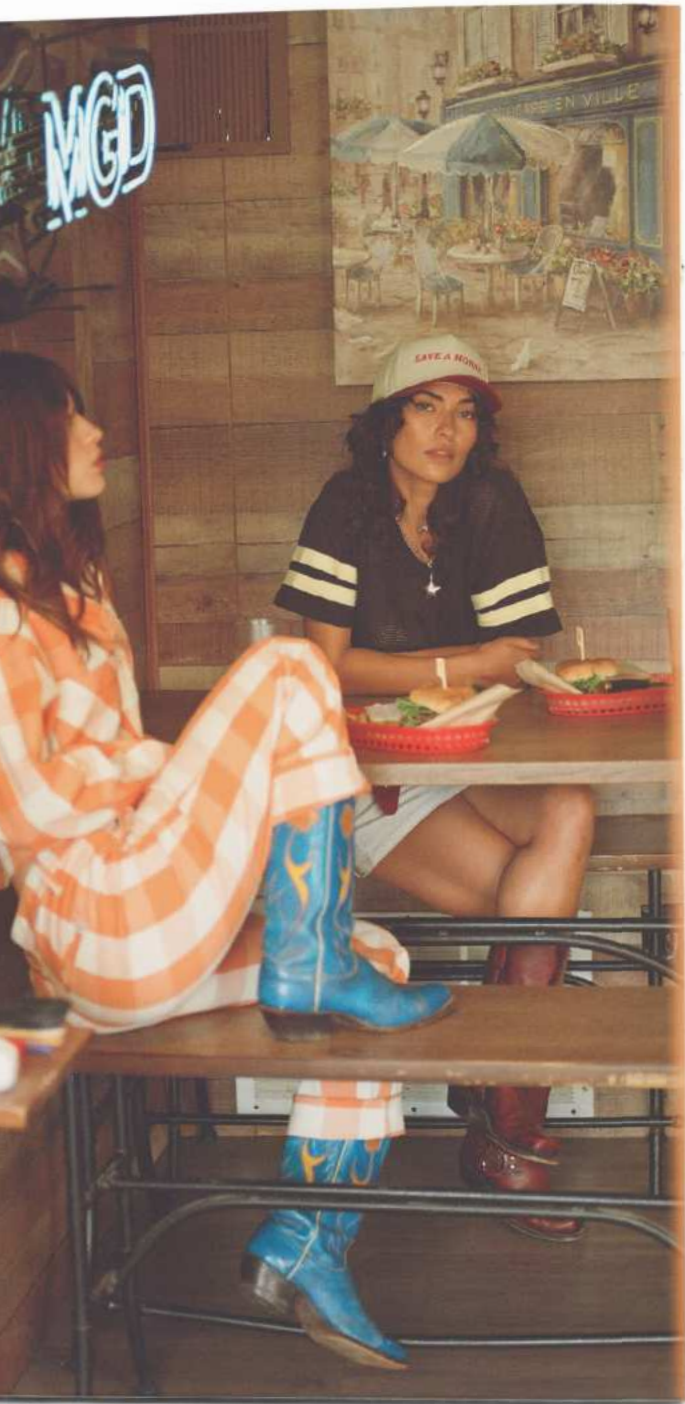
PALE KHAKI
04988-PLKHK

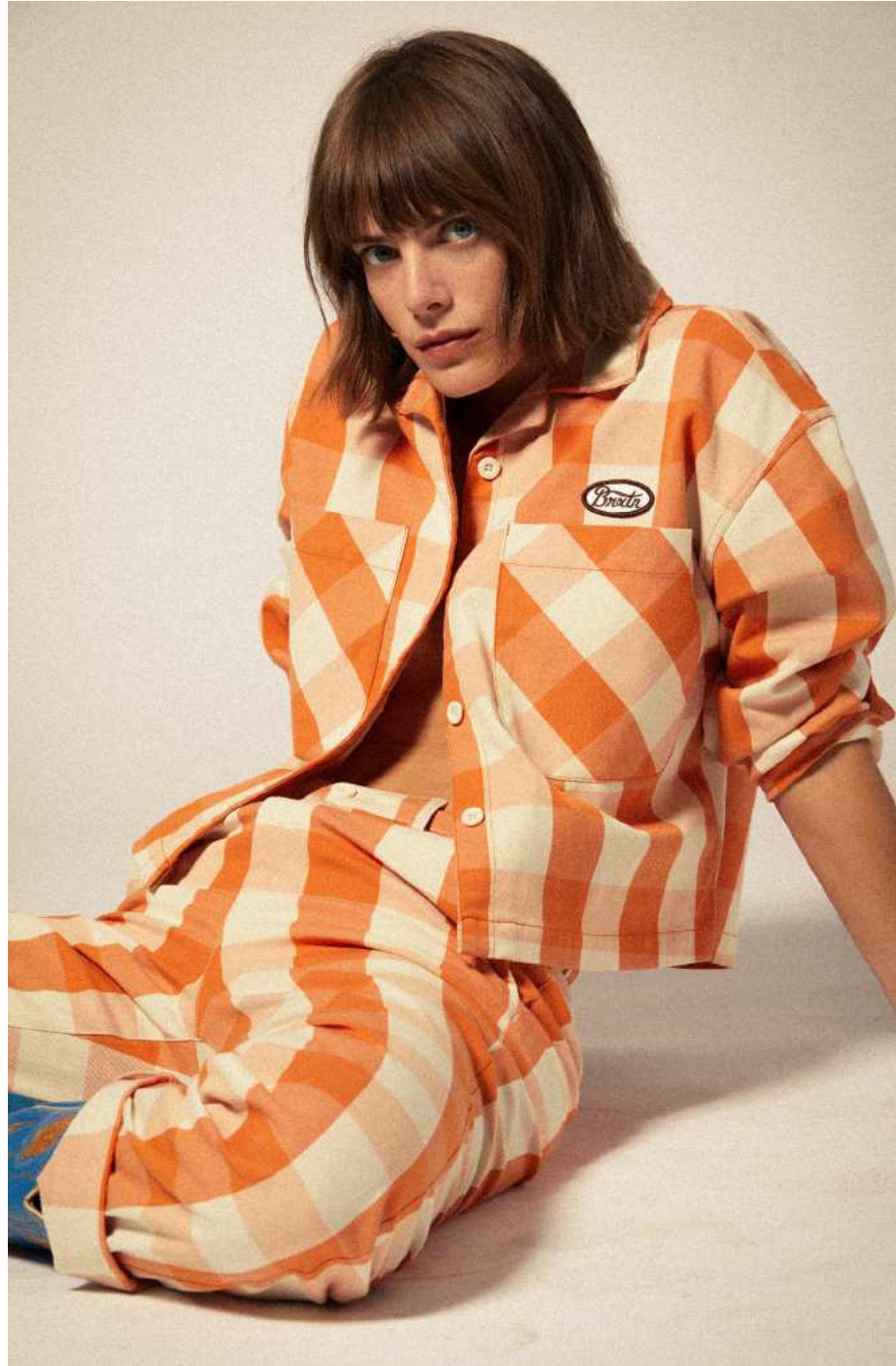
UTILITY OVERALL

RELAXED

XS-XL **\$85/\$170**

- 175 GSM RIPSTOP
- 56% COTTON 26% REPREVE POLYESTER 18% NYLON
- 28" INSEAM
- 18" LEG OPENING
- UTILITY POCKETS
- KNEE PATCHES
- LOGO SHANK BUTTONS
- WOVEN WOOBURN LABEL





UTOPIA OVERSHIRT

RELAXED

XS-XL **\$45/\$90**

- 270GSM COTTON
- 59% COTTON 40% RECYCLE POLYESTER 1% ELASTANE
- 22" HPS

- PATCH POCKETS
- ADJUSTABLE SLEEVE CUFFS
- EMBROIDERED LOGO PATCH



TANGERINE GINGHAM
01408-TGRGH

BEDFORD PANT

STANDARD

24-31 **\$50/\$100**

- 31" INSEAM
- 59% COTTON 40% RECYCLE POLYESTER 1% ELASTANE
- 16" LEG OPENING

- 10.5" HIGH RISE
- LOGO BUTTON
- POCKET LABEL



TANGERINE GINGHAM
04983-TGRGH

* * BLACK
04983-BLACK



UTOPIA OVERSHIRT

RELAXED

XS-XL \$45/\$90

- 13.5OZ COTTON DENIM
- 100% COTTON
- 22" HPS
- PATCH POCKETS
- ADJUSTABLE SLEEVE CUFFS
- EMBROIDERED LOGO PATCH



LIGHT DENIM
01408-LTDEN

CAREFREE ORGANIC GD PERFECT TEE

STANDARD

XS-XL \$25/\$50

- 22" HPS
- 100% ORGANIC COTTON
- 175GSM ORGANIC COTTON JERSEY
- GARMENT DYE WITH ACID WORN WASH
- CENTER BACK BODY SEAM DETAIL
- RIB NECK BINDING
- FRONT LEFT CHEST POCKET



BLACK
22679-BLACK

OFF WHITE
22679-OFFWH

PINECONE BROWN
22679-PNCBN

CAREFREE ORGANIC GD SLIM DRESS

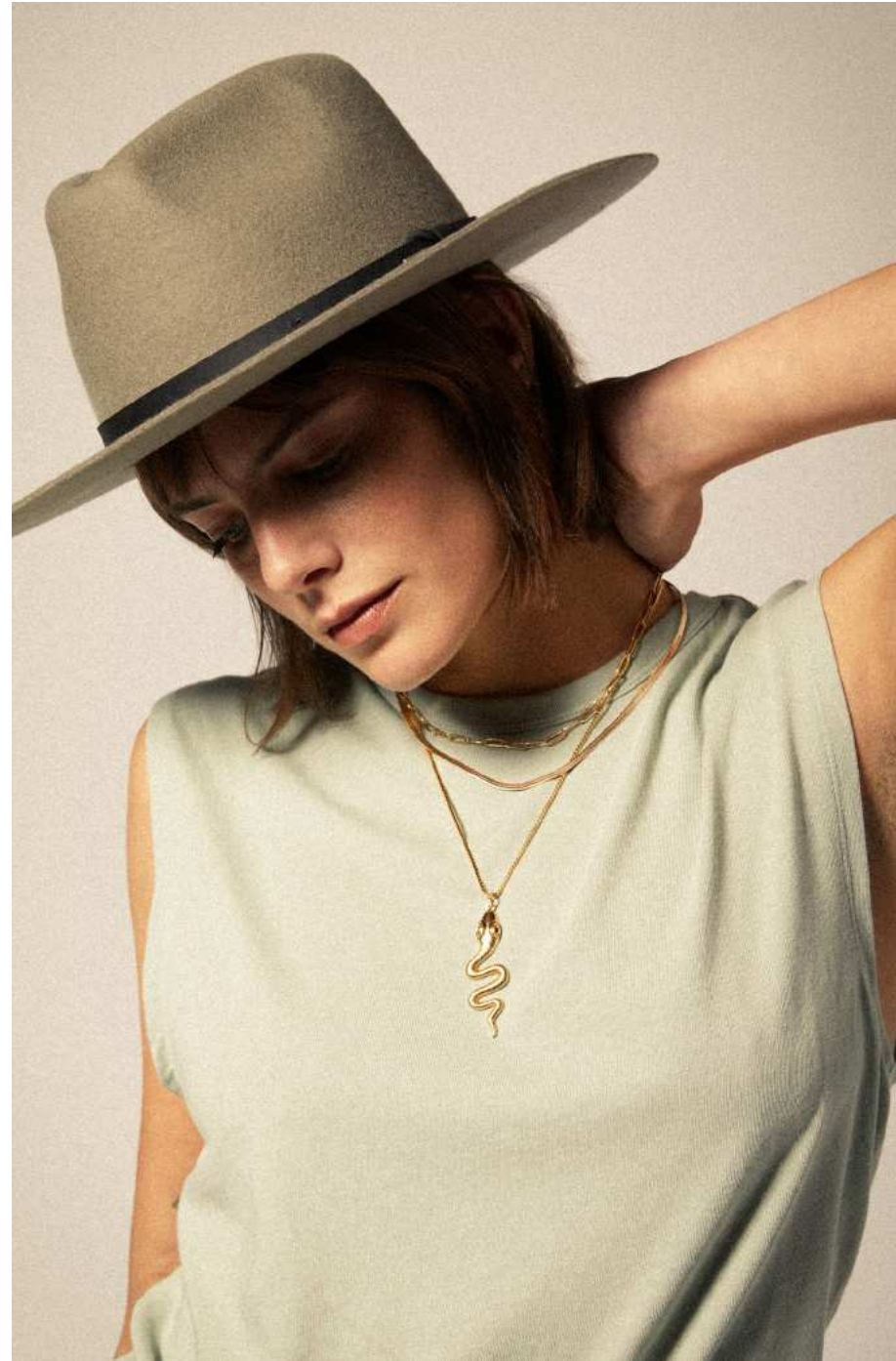
STANDARD

XS-XL \$35/\$70

- 58" HPS
- 100% ORGANIC COTTON
- 175GSM ORGANIC COTTON JERSEY
- GARMENT DYE WITH ACID WORN WASH
- RIB NECK BINDING



BLACK
30014-BLACK



CAREFREE ORGANIC GD MUSCLE TANK

STANDARD

XS-XL \$25/\$50

- 22" HPS
- 100% ORGANIC COTTON
- 175GSM ORGANIC COTTON JERSEY

- GARMENT DYE WITH ACID WORN WASH
- CENTER BACK BODY SEAM DETAIL
- RIB NECK BINDING



▶ BLACK
22754-BLACK

▶ OFF WHITE
22754-OFFWH

SAGE GREEN
22754-SGGRN

CAREFREE ORGANIC GD LOUNGE SHORT

STANDARD

XS-XL \$25/\$50

- 2" INSEAM
- 100% ORGANIC COTTON
- 175GSM ORGANIC COTTON JERSEY

- GARMENT DYE WITH ACID WORN WASH
- ELASTIC WAISTBAND WITH DRAWCORD



▶ BLACK
30011-BLACK

SAGE GREEN
30011-SGGRN



WHITE
17271-WHITE

LEISURE ACTIVITY FITTED CREW TEE

SLIM

XS-XL \$25/\$50

- 22" HPS
- 100% COTTON
- 135GSM BCI COTTON JERSEY
- CONTRAST COLLAR
- FRONT AND BACK SCREENPRINTS



PANNA COTTA
17272-PNNCT

GOOD TIMES FITTED CREW TEE

SLIM

XS-XL \$25/\$50

- 22" HPS
- 100% COTTON
- 135GSM BCI COTTON JERSEY
- GARMENT DYE WITH ACID WORN WASH
- FRONT AND BACK SCREENPRINTS



WHITE
17274-WHITE

SPORTING CLUB OVERSIZED BF TEE

RELAXED

XS-XL \$25/\$50

- 25" HPS
- 100% COTTON
- 175GSM BCI COTTON JERSEY
- FRONT SCREENPRINT



BASALT
17273-BASLT

BLOOM OVERSIZED BOYFRIEND TEE

RELAXED

XS-XL \$25/\$50

- 25" HPS
- 100% COTTON
- 175GSM BCI COTTON JERSEY
- FRONT SCREENPRINT

