



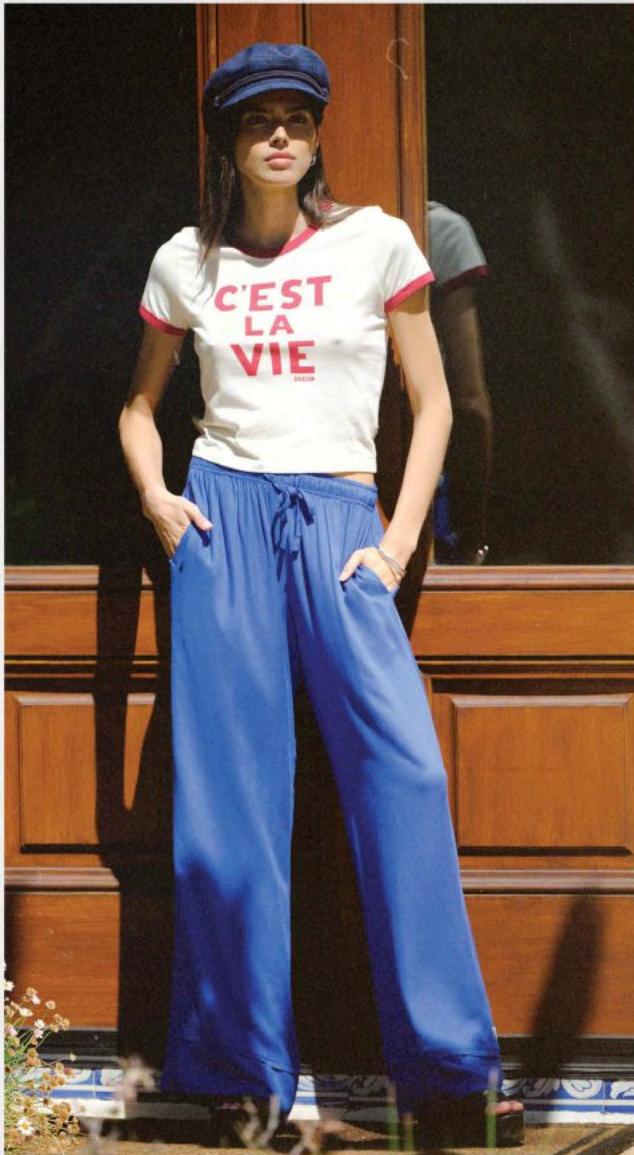

BRIXTON

SPRING 2027
MEN'S MAINLINE CATALOG

HERITAGE WORKWEAR ROOTED IN THE FRENCH COAST.

COASTAL WORKS

Spring 2027 explores where rugged utility meets coastal ease, drawing inspiration from the French Basque coast and the timeless character of workwear shaped by salt, sun, and wear. Rooted in the spirit of Bleu de Travail and the enduring language of utility dressing, the collection reinterprets classic chore silhouettes, washed blues, softened structure, and functional details through a distinctly modern Brixton lens. It is a study in toughness and tranquility, where workwear feels lived in, effortless, and ready for wherever the day leads.



Graphics and prints bring personality to the collection through hand-drawn motifs, vintage signage references, coastal ephemera, and playful pattern stories that feel collected rather than manufactured. Nautical stripes, mosaic-inspired textures, and sun-faded florals add rhythm and movement, balancing heritage references with a sense of spontaneity. Across the collection, the attitude is relaxed but intentional, built on authenticity, craft, and a subtle sense of adventure.

BRIXTON

COASTAL WORKS

SPRING 2027



BRIXTON

COSTUME WORKS

SPRING 2027





Color plays a defining role, grounded in washed blues, earthy neutrals, weathered greens, and warm sunlit tones that echo the coastal landscape. Lightweight layers, durable fabrics, airy cottons, and softened textures deliver a wardrobe made for movement and transition, equally suited for work, travel, and everyday escape. Foundational workwear pieces sit alongside more expressive seasonal statements, creating a collection that feels practical, elevated, and deeply connected to place.



At its core, the story is about timeless clothing made for real life. Utility-driven outerwear, relaxed tailoring, stripes, surf-adjacent ease, and Brixton's enduring headwear heritage come together in a collection built for adventure with effortless coastal style. The result feels familiar yet refreshed, grounded in history while looking forward, capturing a world where the road ends and the sea begins.

BRIXTON

COASTAL WORKS

SPRING 2027







Spring 2027 builds on Brixton's foundation of utility and timeless style, bringing together workwear influences, coastal references, and relaxed seasonal dressing in a way that feels both familiar and fresh. Designed with purpose and built for versatility, the collection reflects an effortless approach to modern classics rooted in authenticity.





TRADEMARK
WORKWEAR INSPIRED,
EVERYDAY CLASSICS.

Trademark is workwear-inspired and built for everyday life. The clean, classic uniform that's easy to wear and always works. Rooted in the honest simplicity of classic workwear, it's a capsule of essentials designed to go with everything and stand the test of time. These are the pieces you reach for without thinking, the ones that carry you from one season to the next. At its heart, it's everything Brixton has always stood for: timeless style that lasts.



BRIXTON

COASTAL WORKS

SPRING 2027



JOURNEY PERFORMANCE CLOTHING, BY OUR STANDARDS.

Journey is performance clothing with nothing to prove. We believe in clothes that move with you. We took everything rooted in Brixton's workwear and casual lifestyle DNA and applied it to performance. The result is clothing that works as hard as you do, without ever looking like it.

BRIXTON

COASTAL WORKS

SPRING 2027



KODAK EKTA 100





BRIXTON BOARDSHORTS

Our boardshorts are rooted in the easy rhythm of life by the water. From the active-minded Blitz to the laid-back Classic Trunk and the vintage-inspired Eclipse, each pair is designed to move with you, dry off quick, and look just as good walking off the sand as it did paddling out. These are the trunks you live in all summer, and the ones you'll still be reaching for years from now.



KODAK EKTAR 100

BRIXTON
ECLIPSE
BOARDSHORT

INTRODUCING: THE ECLIPSE BOARDSHORT

The Eclipse boardshort features a scalloped hem and clean piped seams that nod to the classic vintage boardie. The 96% polyester and elastane blend moves with you and dries fast, while the 21" outseam hits the right length for surf, swim, or whatever the day brings. A back pocket with bungee key loop keeps your essentials close when it counts.

HEADWEAR

Hats are what Brixton was built on. These core silhouettes are the foundation of everything the brand stands for, each stitch a nod to the craftsmen, musicians, and free spirits who shaped its identity. Designed with purpose and built to last, this is craftsmanship rooted in culture and style that never asks for permission.



LAREDO WTHR GUARD COWBOY HAT

Brim Length: 10.5cm/4" - Crown Height: 12cm/4.75"

XS-XL

\$70/\$140

- 100% Wool Felt
- Hard Stiffness
- Cattleman Crown
- Moisture Wicking Adjustable Sweatband
- Double Wrapped Suede Band
- Metal Headwear Plaque



D1



EARTHLY BROWN
11937-ERYBN



KHAKI
11937-KHAKI



RUSTIC BROWN
11937-RSTBR

JUNIPER PACKABLE HAT

Brim Length: 8.9cm/3.5" - Crown Height: 10.4cm/4"

XS-L

\$50/\$100

- 100% Wool Felt
- Light Stiffness
- Grosgrain Band With Branded Metal Clasp At Back
- Moisture Wicking Adjustable Sweatband



D1



BLACK
12120-BLACK



OFF WHITE
12120-OFFWH



RUSTIC BROWN
12120-RSTBR

MESSER FEDORA

Brim Length: 6.5cm/2.5" - Crown
Height: 9.5cm/3.75"

XS-XL

\$40/\$80

- 100% Wool Felt
- Light Stiffness
- Teardrop Crown
- Adjustable Sweatband
- Faux Leather Band
- Metal Crest Pin



D1



BEIGE
10763-BEIGE



BLACK/BLACK
10763-BKBLK



BLACK
10763-BLACK



DEEP GREEN
10763-DEPGN



RUSTIC BROWN
10763-RSTBR



SAND
10763-SAND



WET SAND
10763-WTSND

MESSER PACKABLE FEDORA

Brim Length: 6.5cm/2.5" - Crown Height: 9.5cm/3.75"

XS-XL

\$45/\$90

- 100% Wool Felt
- Light Stiffness
- Teardrop Crown
- Adjustable Sweatband
- Grosgrain Band
- Metal Crest Pin



D1



BLACK/BLACK
10607-BKBLK

WESLEY FEDORA

Brim Length: 7cm/2.75" - Crown Height: 11cm/4.25"

XS-XL

\$40/\$80

- 100% Wool Felt
- Light Stiffness
- Teardrop Crown
- Adjustable Sweatband
- Leather Band
- Metal Headwear Plaque



D1



BEIGE
10761-BEIGE



BLACK
10761-BLACK



BLUE AZURE
10761-BLUAZ



DEEP GREEN
10761-DEPGN



RUSTIC BROWN
10761-RSTBR

STOUT PORK PIE

Brim Length: 4cm/1.5" - Crown Height: 9cm/3.5"

XS-XL

\$35/\$70

- 100% Wool Felt
- Medium Stiffness
- Uptick Brim
- Diamond Crown
- Adjustable Sweatband
- Custom Liner
- Metal Crest Clip



D1



BLACK/BLACK
10764-BKBLK



DEEP GREEN
10764-DEPGN



WET SAND
10764-WTSND

GAIN FEDORA

Brim Length: 4cm/1.5" - Crown Height: 10cm/4"

XS-XL

- 100% Wool Felt
- Medium Stiffness
- Uptick Brim
- Center Dent Crown
- Adjustable Sweatband
- Custom Liner
- Metal Crest Pin



D1



BLACK
10765-BLACK



BARK BROWN/BRONZE
10765-BRBRB

\$40/\$80

\$35/\$70

SOPHIA KNIT PACKABLE HAT

Brim Length: 8.25cm/3.25" - Crown Height: 10.5cm/4"

M/L-XS/S

\$35/\$70

- 100% Cotton
- Light Breathable Cotton Knit
- Jacquard Knit Pattern At Crown And Brim
- Adjustable Sweatband
- Metal Headwear Plaque



D1



FRENCH BLUE
12165-FRHBL



MAUVE
12165-MAUVE



NATURAL/NATURAL
12165-NATNT

MARA PANAMA RANCHER HAT

Brim Length: 9.8cm/3.75" - Crown Height: 11.4cm/4.5"

XS-L

\$150/\$300

- 100% Straw
- Panama Straw
- Two Tone Straw
- Moisture Wicking Adjustable Sweatband
- Metal Headwear Plaque
- Blanket Stitching



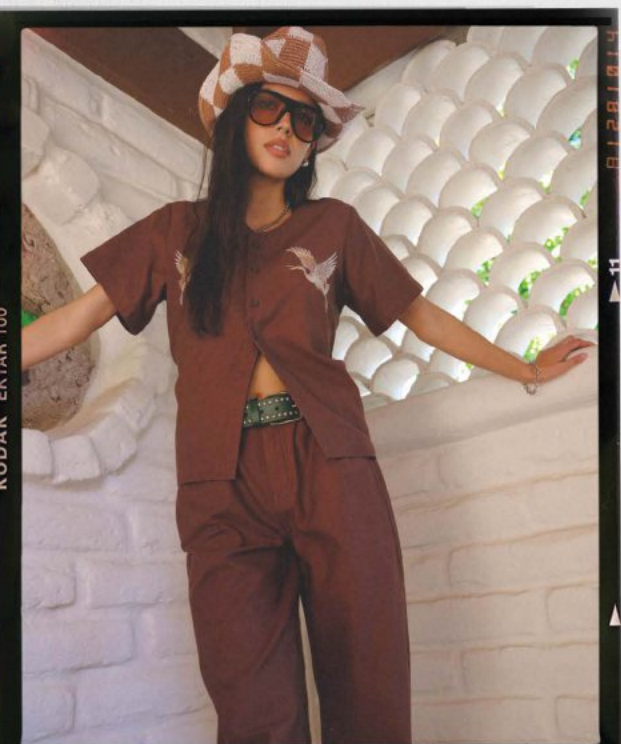
D1



BLACK/NATURAL
12328-BKNAT



TAN/BLACK BLANKET STITCH
12328-TNBBS



HAT:
Odessa Straw Packable Cowboy

TOP:
Baseball SS Woven

BOTTOM:
Chloe 5 Pocket Pant

MARLOW BANDANA STRAW RANCHER H

**Brim Length: 10cm/4" - Crown
Height: 11.2cm/4.375"**

XS-L

\$90/\$180

- 100% Straw
- Fine Tripilla Palm Straw
- Side And Back Pencil Roll Brim
- Removable Bandana
- Moisture Wicking Adjustable Sweatband



WHITECAP/WASHED NAVY STRIPE
12251-WCWNS



D1

HELENA STRAW SUN HAT

**Brim Length: 13cm/5.25" - Crown
Height: 12.5cm/5"**

M/L-XS/S

\$70/\$140

- Various Fabrics
- Crochet Raffia Straw (Tan)
- Patterned Paper Straw (Tnbrn)
- Shapeable Brim With Wire
- Teardrop Crown
- Moisture Wicking Adjustable Sweatband
- Metal Headwear Plaque



TAN
12006-TAN



TAN/BROWN
12006-TNBRN



D1

ODESSA STRAW PACKABLE COWBOY H

**Brim Length: 8.25cm/3.25" - Crown
Height: 12cm/4.75"**

M/L-XS/S

\$70/\$140

- 100% Straw
- Crochet Paper Straw
- Moisture Wicking Adjustable Sweatband
- Shapeable Wire Brim
- Cattleman Crown
- Metal Headwear Plaque
- Crochet Raffia Straw



MAUVE/WHITECAP
12004-MUVWC



TAN
12004-TAN



TAN/BLACK
12004-TNBLK



D1

LAREDO STRAW COWBOY HAT

Brim Length: 10.2cm/4" - Crown Height: 12cm/4.75"

XS-XL

\$85/\$170

- 100% Straw
- Bangora Straw
- Cattleman Crown With Custom Vent
- Double Wrapped Faux Suede Band
- Moisture Wicking Adjustable Sweatband
- Metal Headwear Plaque



D1



BONE
12010-BONE



DARK ROAST
12010-DRKRS

PORTO STRAW FEDORA

Brim Length: 9.8cm/3.75" - Crown Height: 11cm/4.25"

M/L-XS/S

\$65/\$130

- 100% Straw
- Paper Straw
- Teardrop Crown
- Window Pane Pattern Vent
- Triple Wrapped Suede Band
- Moisture Wicking Adjustable Sweatband
- Metal Headwear Plaque



D1



TOASTED NATURAL
12065-TSTNL

HARPER PLAID STRAW SUN HAT

Brim Length: 9.5cm/3.75" - Crown Height: 10cm/4"

XS-L

\$50/\$100

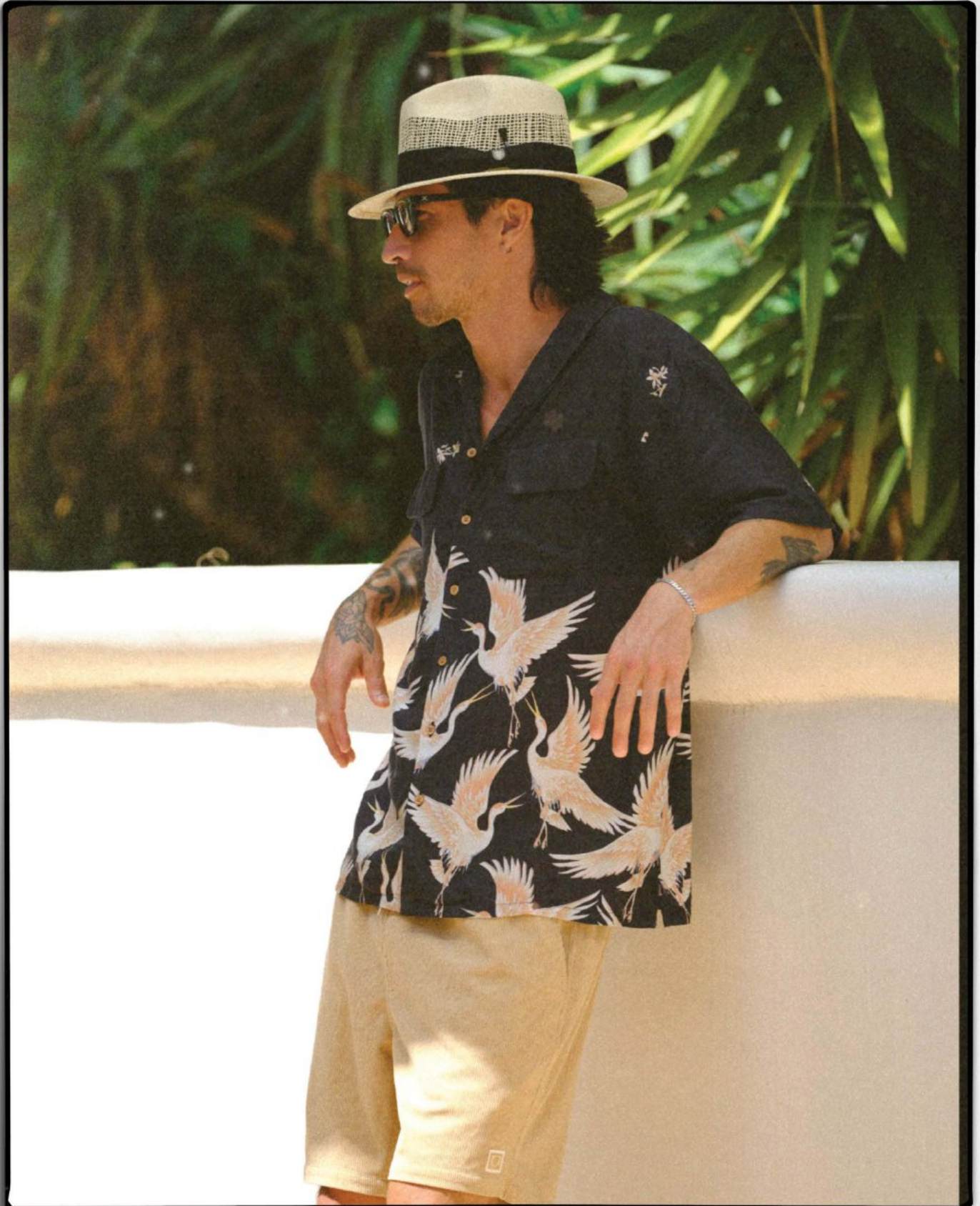
- 100% Straw
- Paper Straw
- Plaid Straw Open Weave
- Adjustable Sweatband
- Metal Headwear Plaque



D1



NATURAL/RED CURRENT/FRENCH BLUE
12252-NRCFB



HAT:
Marley Straw Golf Fedora

TOP:
Paloma SS Print

BOTTOM:
Everyday Corduroy Short

HORTON CB PACKABLE FEDORA

**Brim Length: 5.7cm/2.25" - Crown
Height: 11.8cm/4.75"**

XS-XL

\$30/\$60

- 100% Straw
- Paper Straw
- Grosgrain Band
- Moisture Wicking Adjustable Sweatband
- Metal Crest Pin



DARK TAN/LIGHT BROWN
11834-DKTLB



D1

MARLEY STRAW GOLF FEDORA

**Brim Length: 5.5cm/2.25" - Crown
Height: 11cm/4.25"**

XS-XL

\$45/\$90

- 100% Straw
- Bangora Straw
- Open Vent Crown
- Grosgrain Band
- Moisture Wicking Adjustable Sweatband
- Brixton Golf Tee Included
- Metal Crest Pin



NATURAL/BLACK
12254-NABLK



D1

BLAKE SUN HAT

**Brim Length: 8cm/3.25" - Crown
Height: 11.5cm/4.5"**

XS-XL

\$65/\$130

- 100% Straw
- Tripilla Straw
- Twisted Rope Band
- Teardrop Crown
- Moisture Wicking Adjustable Sweatband
- Metal Headwear Plaque



NATURAL
11828-NATUR



D1

JOANNA HAT

Brim Length: 10cm/4" - Crown Height: 12cm/4.75"

XS-L

\$35/\$70

- 100% Straw
- Wheat Straw
- Teardrop Crown
- Adjustable Sweatband
- Grosgrain Band
- Metal Headwear Plaque



D1



HONEY
10784-HONEY



HONEY/LION
10784-HONLN

WESLEY STRAW PACKABLE FEDORA

Brim Length: 7cm/2.75" - Crown Height: 11cm/4.25"

XS-XL

\$40/\$80

- 100% Straw
- Paper Straw
- Teardrop Crown
- Adjustable Sweatband
- Leather Band
- Metal Headwear Plaque



D1



TAN
10823-TAN

CASTOR FEDORA

Brim Length: 4.5cm/1.75" - Crown Height: 11.8cm/4.75"

XS-XL

\$35/\$70

- 100% Straw
- Paper Straw
- Center Dent Crown
- Adjustable Sweatband
- Grosgrain Band
- Metal Crest Pin



D1



TAN
10767-TAN

RELAX PACKABLE LIFEGUARD HAT

Brim Length: 11cm/4.25" - Crown Height: 10.2cm/4"

O/S

\$40/\$80

- 100% Straw
- Stone Washed Tripilla Palm Straw
- Adjustable Neck Rope & Outside Band
- Merrowed Edge Patch
- Elastic Sweatband



D1



BROWN/BLACK/CREAM
12338-BRBKC



NATURAL/BLUE/RED
12338-NTRBR

MITCH PACKABLE SUN HAT

Brim Length: 11.5cm/4.5" - Crown Height: 10cm/4.25"

L/XL-S/M

\$30/\$60

- 100% Straw
- Paper Straw
- Teardrop Crown
- Elastic Sweatband
- Adjustable Neck Rope
- Metal Headwear Plaque



D1



NATURAL/BLACK MARL
11475-NTLBM



TAN
11475-TAN

BELLS LIFEGUARD HAT

Brim Length: 11cm/4.5" - Crown Height: 10.5cm/4.25"

O/S

\$40/\$80

- 100% Straw
- Palm Straw
- Cattleman Crown
- Elastic Sweatband
- Adjustable Neck Rope
- Leather Fold Label



D1



TAN
12325-TAN



HAT:
Ellee Straw Bucket Hat

TOP:
Huxley Boat Neck LS Knit

BOTTOM:
Everyday Short

REDDING PACKABLE STRAW BUCKET

Brim Length: 7.5cm/3"

M/L-XS/S

\$45/\$90

- Various Fabrics
- Crochet Raffia Straw (Nablk)
- Paper Straw (Nrcfb)
- Plaid Open Weave (Nrcfb)
- Black All Over Stripe Detail (Nablk)
- Moisture Wicking Elastic Sweatband
- Metal Headwear Plaque



NATURAL/BLACK
12017-NABLK



NATURAL/RED
CURRENT/FRENCH BLUE
12017-NRCFB



D1

ELLE STRAW BUCKET HAT

Brim Length: 6cm/2.5"

M/L-XS/S

- 100% Straw
- Crochet Raffia Straw
- Two-Stripe Detail
- Moisture Wicking Elastic Sweatband
- Metal Headwear Plaque
- Multi Color Stripe Detail



COPPER/NATURAL **\$55/\$110**
11624-CONAT



TAN
11624-TAN



TAN/MULTI STRIPE
11624-TNMLS

\$65/\$130

D1

AGNES PACKABLE STRAW BUCKET HA

M/L-XS/S

- 100% Straw
- Crochet Paper Straw
- "On Vacation" Embroidery
- Moisture Wicking Elastic Sweatband
- Metal Headwear Plaque
- Black Scallop Detail
- Checkerboard Pattern



NATURAL/RED CURRENT/FRENCH BLUE
12255-NRCFB



SAND/BLACK SCALLOP
12255-SDBLS



WHITECAP/MAUVE
12255-WCMUV

\$55/\$110



D1

GOODALL PACKABLE GARDEN BUCKET

M/L-XS/S

\$35/\$70

- 100% Cotton
- Washed Cotton Denim
- Self Fabric Neck Tie
- Fringe Brim Edge
- Brixton Embroidery



LIGHT STONE WASH DENIM
12278-LTSWD



D1

LISBOA KNIT PACKABLE BUCKET HA

Brim Length: 7cm/2.75"

M/L-XS/S

\$30/\$60

- 100% Cotton
- Cotton Knit Fabric
- Color Blocked Split
- Moisture Wicking Elastic Sweatband
- Metal Headwear Plaque
- Stripe Detail



BLACK/NATURAL
12015-BKNAT



RED CURRENT/SAND
12015-RDCRS



D1

JOURNEY GOLF BUCKET HAT

**Brim Length: 7.5cm/3" - Crown
Height: 8.5cm/3.375"**

L/XL-S/M

\$45/\$90

- 90% Nylon 10% Elastane
- Water Repellent Stretch Nylon Ripstop
- Detachable Neck Rope
- Size Adjuster Bungee
- Moisture Wicking Elastic Sweatband
- Tee Holder With Brixton Golf Tee Included
- Reflective Heat Transfer Patch



OLIVE TOPO
12256-OLVTP



D1



HEADWEAR ACCESSORIES

Finish the look and keep every piece in rotation. Feathers, hat clips, and headbands offer subtle ways to personalize your hat, while the headwear brush and accessories kit help maintain shape, texture, and longevity. Designed for everyday care and easy styling, these essentials keep your headwear dialed from first wear to last.

DONE PROPER FEDORA TRAVEL CASE

O/S

\$95/\$190

- 100% Ethylene Vinyl Acetate
- 32 Liters
- Leather Patch Details
- Fits Most Wide Brim Hats
- Dwr And Scotchguard Coatings



CREAM/BEIGE
05509-CRMBG



GREY/BLACK
05509-GYBLK

D1

HAT BRUSH

O/S

RETAIL 20.00 | WHSL 10.00

- 100% Wood
- Brixton Logo



BLACK
05378-BLACK

D1

BRIXTON HAT FEATHER

O/S

RETAIL 10.00 | WHSL 5.00

• 100% Bird Feather

D1



BURNT HENNA/BLACK
05515-BNHBK



**BISON/MOJAVE/BURNT
ORANGE**
05515-RSMB0



**BURNT
ORANGE/BLACK/MAHOGANY**
05515-BT0BM



JOE BLUE/BLACK/YELLOW
05515-JOBBY



**MOONLIT
OCEAN/BISON/MOJAVE**
05515-MLOBM



WHITE/BLACK
05515-WHBLK

PROPER HAT CLIP

O/S

RETAIL 30.00 | WHSL 15.00

- 100% Metal
- Works On All Brixton Headwear
- Carabiner Clip



BLACK
05541-BLACK



SAND
05541-SAND

D1

SCROLL KEYCHAIN

O/S

RETAIL 30.00 | WHSL 15.00

- 100% Metal
- Embossed Pattern And Logo
- Nylon Webbing



ANTIQUE BRONZE
05339-ANTBZ

D1

BROOD SNAP CAP

XS-XL

\$30/\$60

- Various Fabrics
- Newsboy Cap
- Herringbone Plaid (Fhbyh)
- Washed Denim (Muvwd)
- Two Tone Corduroy (Wsbbc)
- Herringbone (Black - Brown/Khaki - Grey/Black)
- Custom Liner
- Metal Crest Pin



BLACK
10770-BLACK



BROWN/KHAKI
10770-BRKHK



**FRENCH BLUE/YELLOW
HERRINGBONE**
10770-FHRYH



GREY/BLACK
10770-GYBLK



MAUVE WASHED DENIM
10770-MUVWD



**WET SAND/BROWN BARK
CORDUROY**
10770-WSBBC

D1

BROOD LW SNAP CAP

XS-XL

\$30/\$60

- Various Fabrics
- Newboy Cap
- Herringbone Pinstripe (Blazh)
- Textured Fabric (Sfpnk)
- Lightweight Cooling Liner & Sweatband
- Metal Crest Pin



BLUE AZURE HERRINGBONE
11638-BLAZH



SOFT PINK
11638-SFPNK



D1

HOOLIGAN SNAP CAP

XS-XL

\$30/\$60

- Various Fabrics
- Flat Cap
- Herringbone Plaid (Fhbyh)
- Washed Denim (Muvwd)
- Printed Camo (Trecm)
- Herringbone (Black - Brown/Khaki - Grey/Black)
- Custom Liner
- Metal Crest Pin



BLACK
10771-BLACK



BROWN/KHAKI
10771-BRKHK



**FRENCH BLUE/YELLOW
HERRINGBONE**
10771-FHRYH



GREY/BLACK
10771-GYBLK



MAUVE WASHED DENIM
10771-MUVWD



TREE CAMO
10771-TRECM

D1

HOOLIGAN LW SNAP CAP

XS-XL

\$30/\$60

- Various Fabrics
- Flat Cap
- Herringbone Pinstripe (Blazh)
- Cotton Ripstop (Bgcrs)
- Lightweight Cooling Liner & Sweatband
- Metal Crest Pin



D1



BEIGE COTTON RIPSTOP
11023-BGCRS



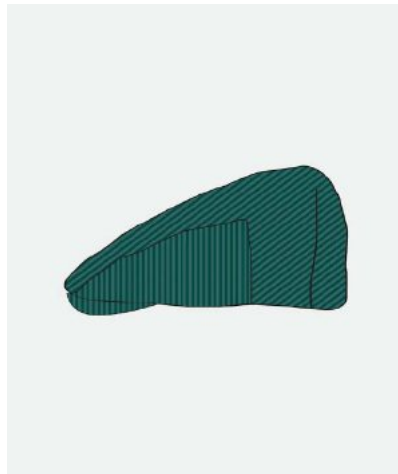
BLUE AZURE HERRINGBONE
11023-BLAZH

BARREL SNAP CAP

XS-XL

\$30/\$60

- Various Fabrics
- Baggy Flat Cap
- Washed Denim (Lgswd)
- Corduroy (Dpgnc)
- Back Embroidery Detail
- Custom Liner



DEEP GREEN CORDUROY
11932-DPGNC



LIGHT STONE WASHED DENIM
11932-LGSWD

D1

FIDDLER CAP

XS-XL

\$30/\$60

- Various Fabrics
- Fisherman Cap
- Herringbone Plaid (Fhbyh)
- Washed Denim (Muvwd)
- Two Tone Canvas And Hickory Stripe (Lthsb)
- Herringbone (Black)
- Custom Liner
- Brixton Embroidery



BLACK
10772-BLACK



**FRENCH BLUE/YELLOW
HERRINGBONE**
10772-FHRYH



LIGHT HICKORY STRIPE/BEIGE
10772-LTHSB



MAUVE WASHED DENIM
10772-MUVWD

D1



HAT:
Hayley RR Snapback

TOP:
Hotel De La Mer boxy Cropped crew Tee

FIDDLER LE CAP

XS-XL

\$30/\$60

- Various Fabrics
- Fisherman Cap
- Cotton (Bkgrn)
- Corduroy (Wsbcc)
- Crown Embroidery Detail
- Brim Embroidery Detail (Bkgrn)
- Custom Liner



BLACK/GREEN
12292-BKGRN



WET SAND/BROWN BARK
CORDUROY
12292-WSBBC

D1

NEWPORT STRAW VISOR

O/S

\$30/\$60

- 100% Straw
- Paper Straw
- Padded Sweatband
- Lightweight Canvas Binding And Liner
- Elastic Back
- Metal Headwear Plaque
- Multi Color Stripe Detail



NATURAL/NATURAL
11702-NATNT



NATURAL/MULTI STRIPE
11702-NTLMS

D1

HAYLEY RAILROAD SNAPBACK

Unstructured High Profile Adjustable Railroad Hat

O/S

\$22.50/\$45

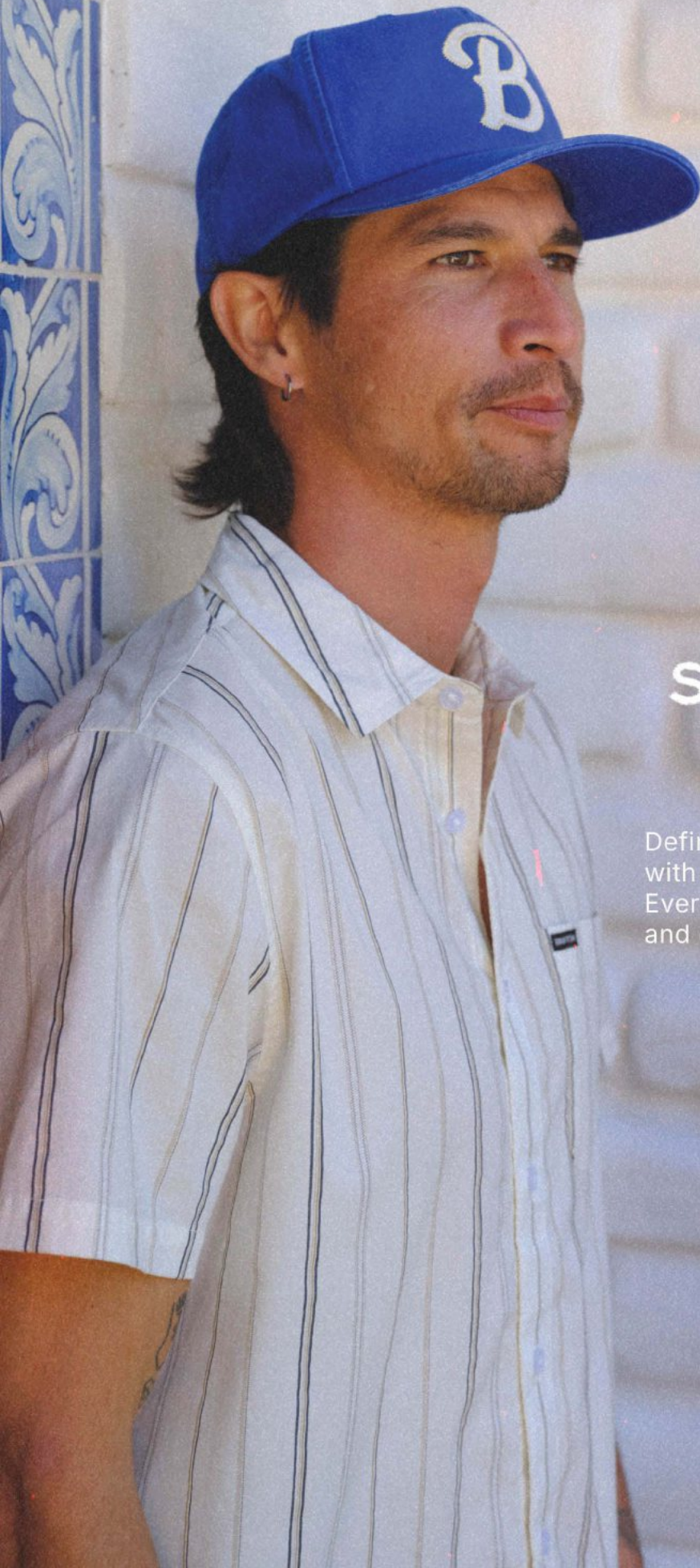
- 100% Polyester
- Merrowed Edge Embroidered Patch
- Crown Pleats
- Moisture Wicking Sweatband
- Adjustable Snapback Closure



HICKORY STRIPE
12288-HCKST



D1



SNAPBACK FIT GUIDE

Defining our snapback fits. Each one shaped with purpose and refined through detail. Every silhouette carries its own distinct style and character.



ATKINS SNAPBACK

LOW PROFILE

An unstructured snapback with a low profile and classic 5 panel and 6 panel front construction. The soft crown naturally conforms to the head for a relaxed, broken-in feel, while the curved bill adds an easy everyday shape. Finished with an adjustable snap closure, it delivers comfort, simplicity, and effortless style.



IDLEWAY SNAPBACK

MEDIUM PROFILE

A structured snapback built with a medium profile and a clean 5 panel and 6 panel construction. The firm front panel holds its shape for a sharp, consistent look, while the curved or flat bill adds a worn in, everyday feel. Finished with an adjustable snap closure, it delivers a balanced fit with a confident, refined profile.



LAMBERT SNAPBACK.

VINTAGE PROFILE

The vintage fit features a high profile with a semi-structured 5 and 6 panel build for a bold, confident shape. Designed with a flat bill and taller crown, it delivers a strong silhouette out while maintaining everyday comfort. Finished with an adjustable snap closure for a secure, classic fit.



HAT:
Atkins Snapback

TOP:
Hound Zip Hoodie Fleece

ATKINS SNAPBACK

Unstructured Curved Low Profile 6-Panel

O/S

\$25/\$50

- 100% Cotton
- Washed Cotton Twill
- 3D Embroidery
- Moisture Wicking Sweatband
- Adjustable Snapback Closure
- 100% Polyester



D1



BLACK
12275-BLACK



OFF WHITE/MAUVE
12275-OFWMU

EASTGATE SNAPBACK

Unstructured Curved Low Profile 5-Panel

O/S

\$25/\$50

- 100% Cotton
- Cotton Twill
- Merrowed Edge Printed Patch
- Moisture Wicking Sweatband
- Adjustable Snapback Closure



D1



BLACK
12276-BLACK



OFF WHITE/BROWN
12276-OFWHB

HUXLEY SNAPBACK

Unstructured Curved Low Profile 5-Panel

O/S

\$25/\$50

- 65% Cotton 35% Polyester
- Front And Back Direct Embroidery
- Moisture Wicking Sweatband
- Adjustable Snapback Closure



D1



LIGHT BLUE/NAVY
12284-LBLNV

FLASH ADJUSTABLE HAT

Unstructured Curved Low Profile 6-Panel

O/S

\$27.50/\$55

- 100% Cotton
- All Over Direct Embroidery
- Moisture Wicking Sweatband
- Adjustable Snapback Closure



DEEP GREEN
12285-DEPGN



SAND
12285-SAND



D1

BIG B SNAPBACK

Unstructured Curved Medium Profile 6-Panel

O/S

\$25/\$50

- 100% Cotton
- Cotton Herringbone With Heavy Wash
- Twill Patch With Zig-Zag Stitch
- Moisture Wicking Sweatband
- Adjustable Snapback Closure
- Printed Camo



FRENCH BLUE
12324-FRHBL



TREE CAMO
12324-TRECM



D1

DELMAR SNAPBACK

Unstructured Medium Profile 5-Panel

O/S

\$20/\$40

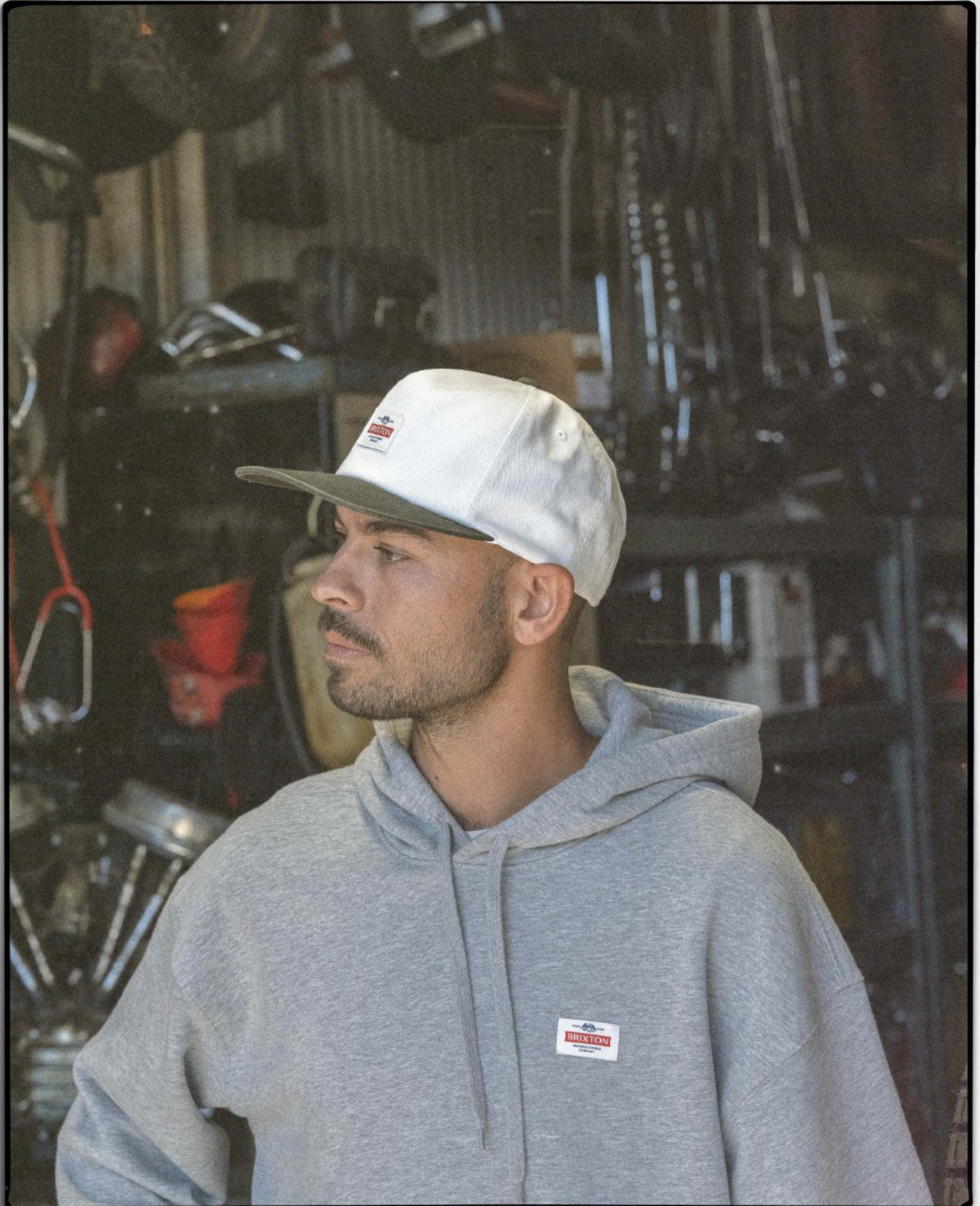
- 100% Cotton
- Front And Side Panel Direct Embroidery
- Moisture Wicking Sweatband
- Adjustable Snapback Closure



SAND/BLACK
12272-SNBLK



D1



HAT:
Trademark Snapback

TOP:
Trademark Hood

FORTRESS SNAPBACK

Semi-Structured Medium Profile 5-Panel

O/S

\$20/\$40

- 100% Cotton
- Front And Back Direct Embroidery
- Moisture Wicking Sweatband
- Adjustable Snapback Closure



BLACK
12273-BLACK



D1

BOYCE SNAPBACK

Semi-Structured Medium Profile 5-Panel

O/S

\$20/\$40

- 100% Recycled Polyester
- Washed Recycled Poly Oxford
- Direct Embroidery
- Moisture Wicking Sweatband
- Adjustable Snapback Closure



DARK TAN/BLACK
12277-DRKTB



D1

TRADEMARK SNAPBACK

Unstructured Medium Profile 5-Panel

O/S

\$22.50/\$45

- 100% Cotton
- Washed Cotton Twill
- Woven Label
- Moisture Wicking Sweatband
- Adjustable Snapback Closure



BLACK
12129-BLACK



OFF WHITE/BALSAM
12129-OWHBS



D1

HARWELL TRUCKER HAT

Semi-Structured Medium Profile 5-Panel

O/S

\$20/\$40

- Front Panel/Visor: 100% Cotton Back Four Panels: 100% Polyester
- Front And Visor Direct Embroidery
- Visor Rope
- Moisture Wicking Sweatband
- Adjustable Snapback Closure



BLACK/BLACK
12265-BKBLK



D1

LODGE TRUCKER HAT

Semi-Structured Medium Profile 5-Panel

O/S

\$20/\$40

- Front Panel/Visor: 100% Recycled Polyester Back Four Panels: 100% Polyester
- Washed Recycled Poly Oxford
- Direct Embroidery
- Moisture Wicking Sweatband
- Adjustable Snapback Closure



BLACK/BLACK
12262-BKBLK



D1



OFF WHITE/PURPLE
12262-OFWPP

FIELD AND STREAM TRUCKER HAT

Semi-Structured Medium Profile 5-Panel

O/S

\$25/\$50

- 60% Polyester 40% Cotton
- Merrowed Edge Printed Felt Patch
- Full Mesh Crown
- Moisture Wicking Sweatband
- Adjustable Snapback Closure



BLACK/BLACK
12264-BKBLK



D1



OLIVE/CAMO
12264-OLVCO

DROP IN TRUCKER HAT

Curved Medium Profile Foam 5-Panel

O/S

\$20/\$40

- 100% Polyester
- Direct Embroidery
- Mesh Back
- Moisture Wicking Sweatband
- Adjustable Snapback Closure



BLACK/WHITE
12269-BKWHT



D1

HUBAL TRUCKER HAT

Curved Medium Profile 5-Panel

O/S

\$20/\$40

- Front Panel/Visor: 100% Cotton
- Back Four Panels: 100% Polyester
- Merrowed Edge Embroidered Patch
- Mesh Back
- Moisture Wicking Sweatband
- Adjustable Snapback Closure



LIGHT STONE WASH DENIM
12268-LTSWD



D1



OFF WHITE/GREEN CORDUROY
12268-OFWGC



SAND/BLACK
12268-SNBLK

OATH MP TRUCKER HAT

Medium Profile 5-Panel

O/S

\$17.50/\$35

- 60% Cotton 40% Polyester
- Merrowed Edge Embroidered Patch
- Mesh Back
- Moisture Wicking Sweatband
- Adjustable Snapback Closure



BLACK/BLACK/BLACK
11627-BBBLK



D1



DARK TAN/RED CURRENT
11627-DKTRC



ROYAL/GREEN/WHITE
11627-RYGRW



HAT:
Mayson Painters Cap

TOP:
Journey LW LS

BOTTOM:
Journey Active Short

MAYSON PAINTERS CAP

Unstructured Adjustable 3-Panel Painter Cap

O/S

\$32.50/\$65

- 97% Polyester 3% Elastane
- Moisture Wicking Stretch Polyester
- Merrowed Edge Embroidered Patch
- Top Panel Screen Print
- Neck Flaps
- Moisture Wicking Sweatband
- Adjustable Snapback Closure



BLACK
12259-BLACK



D1

MAYSON JOURNEY ADJ HAT

Semi-Structured Medium Profile 5-Panel

O/S

\$25/\$50

- 97% Polyester 3% Elastane
- Moisture Wicking Stretch Polyester
- Laser Cut Back Panels
- Merrowed Edge Embroidered Patch
- Eva Packable Visor
- Visor Rope
- Moisture Wicking Sweatband
- Adjustable Stretch Velcro Closure



BLACK/BLACK
12263-BKBLK



TREE CAMO
12263-TRECM



D1

BETA JOURNEY ADJ HAT

Semi-Structured Curved Medium Profile 5-Panel

O/S

\$30/\$60

- 90% Nylon 10% Elastane
- Water Repellent Stretch Nylon Ripstop
- Reflective Heat Transfer
- Moisture Wicking Sweatband
- Adjustable Grosgrain Hook Closure



BLACK
12176-BLACK



OLIVE TOPO
12176-OLVTP



D1

PARKS AND REC SNAPBACK

Curved Medium Profile 5-Panel

O/S

\$20/\$40

- 100% Cotton
- Merrowed Edge Embroidered Patch
- Unique Patch Differs Per Colorway
- Moisture Wicking Sweatband
- Adjustable Snapback Closure



D1



BLACK
12260-BLACK



OFF WHITE/BALSAM
12260-0WHBS



SAND/RED CURRENT
12260-SNDRC

BEST FRIEND SNAPBACK

Curved Medium Profile 5-Panel

O/S

\$20/\$40

- 100% Recycled Polyester
- Direct Embroidery
- Moisture Wicking Sweatband
- Adjustable Snapback Closure



D1



DARK TAN/CLASSIC NAVY
12270-DKTCN



OFF WHITE/GREEN
12270-0FWGN

STRATTON SNAPBACK

Curved Medium Profile 5-Panel

O/S

\$20/\$40

- 100% Cotton
- Direct Embroidery
- Moisture Wicking Sweatband
- Adjustable Snapback Closure



D1



OFF WHITE/BLACK
12271-0FFBK



OLIVE SURPLUS/DARK OLIVE
12271-0LSDO

EYES UP HERE SNAPBACK

Curved Medium Profile 5-Panel

O/S

\$20/\$40

- 100% Cotton
- Front And Side Panel Direct Embroidery
- Moisture Wicking Sweatband
- Adjustable Snapback Closure



OFF WHITE/BLACK
12266-OFFBK



D1

C'EST LA VIE SNAPBACK

Curved Medium Profile 5-Panel

O/S

\$20/\$40

- 100% Cotton
- Front 3D Embroidery
- Side Direct Embroidery
- Moisture Wicking Sweatband
- Adjustable Snapback Closure



CREAM/RED CURRENT
12286-CRMRC



D1

SINK OR SWIM SNAPBACK

Curved Medium Profile 5-Panel

O/S

\$20/\$40

- 100% Recycled Polyester
- Direct Embroidery
- Moisture Wicking Sweatband
- Adjustable Snapback Closure



DARK TAN/BLACK
12287-DRKTB



D1

DE LA MER SNAPBACK

Curved Medium Profile 5-Panel

O/S

\$25/\$50

- 100% Cotton
- Direct Embroidery With Overlaying Chenille & Embroidered Patches
- Moisture Wicking Sweatband
- Adjustable Snapback Closure



OFF WHITE/FRENCH BLUE
12289-OWHFB



D1

CREST C MP SNAPBACK

Curved Medium Profile 5-Panel

O/S

\$22.50/\$45

- 85% Acrylic 15% Wool
- Merrowed Edge Embroidered Patch
- Moisture Wicking Sweatband
- Adjustable Snapback Closure
- 100% Cotton
- Crown: 85% Acrylic 15% Wool Visor: 100% Polyester



BLACK/BLACK
11001-BKBLK



BLACK
11001-BLACK



BALSAM
11001-BLSAM



WHITE/ENIGMA BLUE
11001-WHEMB



D1

LINWOOD SNAPBACK

Curved Medium Profile 5-Panel

O/S

\$22.50/\$45

- 85% Acrylic 15% Wool
- Merrowed Edge Embroidered Patch
- Moisture Wicking Sweatband
- Adjustable Snapback Closure
- Crown: 85% Acrylic 15% Wool Visor: 100% Recycled Polyester
- Front Panel: 100% Recycled Polyester Back Four Panels/Visor: 100% Cotton



BLACK/WHITE
12267-BKWHT



GREY/CLASSIC NAVY
12267-GYCCN



TREE CAMO/DARK TAN
12267-TRCDT



D1

IDLEWAY SNAPBACK

Medium Profile 6-Panel

O/S

\$22.50/\$45

- 100% Cotton
- Front And Side Panel Direct Embroidery
- Moisture Wicking Sweatband
- Adjustable Snapback Closure



BLACK
12274-BLACK



WHITE/RED CURRENT
12274-WHRDC



D1

OATH III SNAPBACK

Medium Profile 6-Panel

O/S

\$22.50/\$45

- 80% Acrylic 20% Wool
- Merrowed Edge Embroidered Patch
- Moisture Wicking Sweatband
- Adjustable Snapback Closure
- 100% Cotton
- 60% Acrylic 30% Polyester 10% Wool



BLACK/BLACK
10777-BKBLK



BLACK
10777-BLACK



BALSAM/TREE CAMO
10777-BLSTC



OFF WHITE/RUSTIC BROWN
10777-OWRSB

\$25/\$50



D1

LAMBERT SNAPBACK

Unstructured Vintage High Profile 6-Panel

O/S

\$22.50/\$45

- 100% Cotton
- Front Felt Applique & Chain Stich Embroidery
- Back Direct Embroidery
- Moisture Wicking Sweatband
- Adjustable Snapback Closure



BLACK
12261-BLACK



CLASSIC
NAVY/BURGUNDY/SAND
12261-CCNBS



D1

HIRSCH SNAPBACK

Unstructured Vintage High Profile 5-Panel

O/S

\$22.50/\$45

- 100% Cotton
- Front Direct And 3D Embroidery
- Moisture Wicking Sweatband
- Adjustable Snapback Closure



D1



BLACK
12290-BLACK



FRENCH BLUE
12290-FRHBL

GRADE SNAPBACK

Unstructured Medium Profile 6-Panel

O/S

\$20/\$40

- 100% Cotton
- Merrowed Edge Embroidered Patch
- Moisture Wicking Sweatband
- Adjustable Snapback Closure



D1



BLACK/OFF WHITE
12184-BKOFF



BROWN BARK/TAWNY YELLOW
12184-BRBTY



WHITE/DEEP GREEN CORDUROY
12184-WHDGC

\$22.50/\$45



BOTTOM'S FIT GUIDE

A considered range of fits built for everyday wear. From workwear driven styles to refined essentials, each style is shaped with intention and defined by the details that set it apart. Durable fabrics and thoughtful construction create bottoms that move easily between work, travel, and daily life.

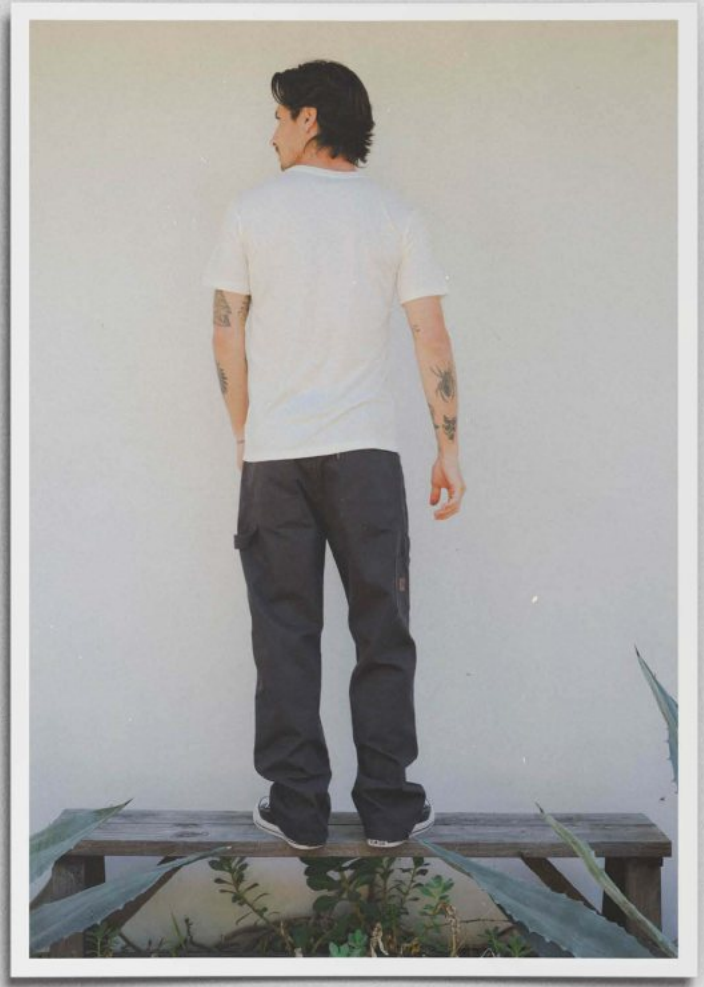
5 POCKET PANT



BUILDERS 5 POCKET PANT

A regular fit with a straight cut through the thigh and leg opening, finished with five pocket detailing for a timeless feel.

RELAXED CARPENTER



BUILDERS CARPENTER PANT

A relaxed fit with a straight leg and extra room from hip to ankle, finished with classic carpenter pocket detailing for ease and utility.

WIDE STRAIGHT LEG



TRADEMARK CHINO PANT

A wide leg cut with a refined chino finish, offering a relaxed yet intentional silhouette built for effortless everyday wear.

RELAXED E-WAIST



EVERYDAY SURPLUS E-WAIST PANT

A relaxed fit with an elasticated waist and easy pull-on styling, built for all-day comfort without sacrificing a clean, effortless look.



HAT:
Big B Snap Back

TOP:
Charter

BOTTOM:
Builders 5 Pocket Pant

BUILDERS CARPENTER PANT

Relaxed

28-38

\$65/\$130

- Various Fabrics
- Durable Canvas (Black, Wtsnd)
- Cotton Denim (Dkden)
- Stretch Construction
- Water Resistant Coating
- Built With Repreve Polyester Made From Recycled Plastic Bottles
- Pocket Guard Protection Against Clip Tool
- Front Welt Pocket
- Double Layer Back Pocket
- Double Knee Reinforcement
- Double Layer Finishing To Protect Against Boot Damage

D1



BLACK
04920-BLACK



WET SAND
04920-WTSND

BUILDERS 5 POCKET PANT

Regular

28-38

\$55/\$110

- Various Fabrics
- Stretch Construction (Black)
- Water Resistant Coating (Black)
- Built With Repreve Polyester Made From Recycled Plastic Bottles (Black)
- Denim With Stone Wash (Ltstw)
- Pocket Guard Protection Against Clip Tool
- Reinforced Riveted Belt Loop
- Reinforced Structural Fell Seams
- 5 Pocket Detail
- Inseam 32"



D1



BLACK
04917-BLACK



LIGHT STONE WASH
04917-LTSTW

EVERYDAY SURPLUS E-WAIST PANT

Relaxed

S-XXL

\$45/\$90

- 100% Cotton
- Elastic Waistband With Drawcord Closure
- 287 Gsm Cotton Herringbone
- Pigment Dye With Enzyme Stone Wash
- Back Patch Pockets
- Key Loop At Back Waistband
- Strip Label Above Rear Patch Pocket
- 30" Inseam
- 18" Leg Opening

D1



BLACK
30117-BLACK



OLIVE SURPLUS
30117-OLVSP

TRADEMARK CHINO

Relaxed

28-38

\$55/\$110

- 65% Polyester 35% Cotton
- Fixed Waist With Button Fly And Zip Closure
- Slash Pockets
- Rear Patch Pockets
- Wide Belt Loops
- Brixton Woven Label Above Back Patch Pocket
- 31" Inseam
- 20" Leg Opening



BLACK
30099-BLACK



BALSAM
30099-BLSAM

D1



HAT:
Atkins Snapback

TOP:
Charter Short Sleeve

BOTTOM:
Everyday Resort Waffle Short

EVERYDAY RESORT WAFFLE SHORT

Relaxed

S-XXL

\$45/\$90

- 100% Cotton
- Elastic Waistband With Drawcord Closure
- 100% Cotton Waffle Fabric
- Back Patch Pockets
- Woven Shield Label
- 18" Outseam / 7" Inseam



BLACK
30121-BLACK



MUSHROOM
30121-MSHRM



STEEL BLUE
30121-STBLU

D1

EVERYDAY CORDUROY SHORT

Relaxed

S-XXL

\$40/\$80

- 100% Polyester
- Elastic Waistband With Drawcord Closure
- Back Patch Pockets
- Woven Shield Label
- 18" Outseam / 7" Inseam



BALSAM
30003-BLSAM



BROWN BARK
30003-BRWBK



SAND
30003-SAND



VINTAGE BLACK
30003-VIBLK

D1

EVERYDAY SURPLUS SHORT

Relaxed

S-XXL

\$40/\$80

- 100% Cotton
- Elastic Waistband With Drawcord Closure
- 287 Gsm Cotton Herringbone
- Pigment Dye With Enzyme Stone Wash
- Back Patch Pockets
- Woven Shield Label
- 18" Outseam / 7" Inseam



FRENCH BLUE
30119-FRHBL



OLIVE SURPLUS
30119-OLVSP

D1

EVERYDAY STRETCH HYBRID SHORT

Relaxed

S-XXL

\$45/\$90

- 94% Nylon 6% Elastane
- Multi-Functional Short
- Quick Dry Fabric
- 150 Gsm Nylon Elastane Stretch Plain Weave
- Elastic Waistband With Drawcord Closure
- Beta Rubber Patch
- 18" Outseam / 7" Inseam



D1



BLACK CRANES
30002-BKCRN



BLACK
30002-BLACK



BLUE SCENIC
30002-BLUSC



WET SAND
30002-WTSND

JOURNEY ACTIVE SHORT

Relaxed

S-XXL

\$45/\$90

- 92% Polyester 8% Elastane
- 180 Gsm Polyester Jacquard Grid Weave With 4-Way Stretch
- Moisture Wicking - Antibacterial Benefits
- Elastic Waistband With Drawcord Closure
- Back Patch Pocket
- 18" Outseam / 7" Inseam



OCEAN STRIPE
30064-OCNST



OLIVE SURPLUS
30064-OLVSP

D1

TRADEMARK CHINO SHORT

Relaxed

28-38

\$40/\$80

- 65% Polyester 35% Cotton
- Fixed Waist With Button Fly And Zip Closure
- Slash Pockets
- Rear Welt Pockets
- Wide Belt Loops
- Brixton Woven Label Above Back Welt Pocket
- 10" Inseam / 23" Outseam



BLACK
30118-BLACK



BALSAM
30118-BLSAM



WET SAND
30118-WTSND

D1

BRIXTON RELAXED SHORT

Relaxed

28-38

\$50/\$100

- 100% Cotton
- Fixed Waist With Shank Button
- Zip Fly
- 27" Outseam



LIGHT STONE WASH
30114-LTSTW



WET SAND
30114-WTSND

D1

BOARDSHORT FIT GUIDE

Three outseams, three styles, all built around the same idea: a short that works as hard as you do. From the 17" Classic to the 18" Eclipse and the 19" Blitz, every pair comes with quick-dry fabric, a secure waistband, and clean construction made to last. The fit, the feel, and the finer details are what set each one apart.

ECLIPSE BOARDSHORT

OUTSEAM | 18" **WAISTBAND** | Fixed **FABRIC** | 96% polyester, 4% elastane — 150GSM

SEAM DETAIL | Clean finished seams with piping, scalloped hem **POCKET** | Back patch pocket with bungee key loop



BLITZ BOARDSHORT

OUTSEAM | 21" **WAISTBAND** | Fixed **FABRIC** | 96% polyester, 4% elastane — 150GSM
SEAM DETAIL | Clean finished seams **POCKET** | Back pocket with bungee key loop and invisible zipper

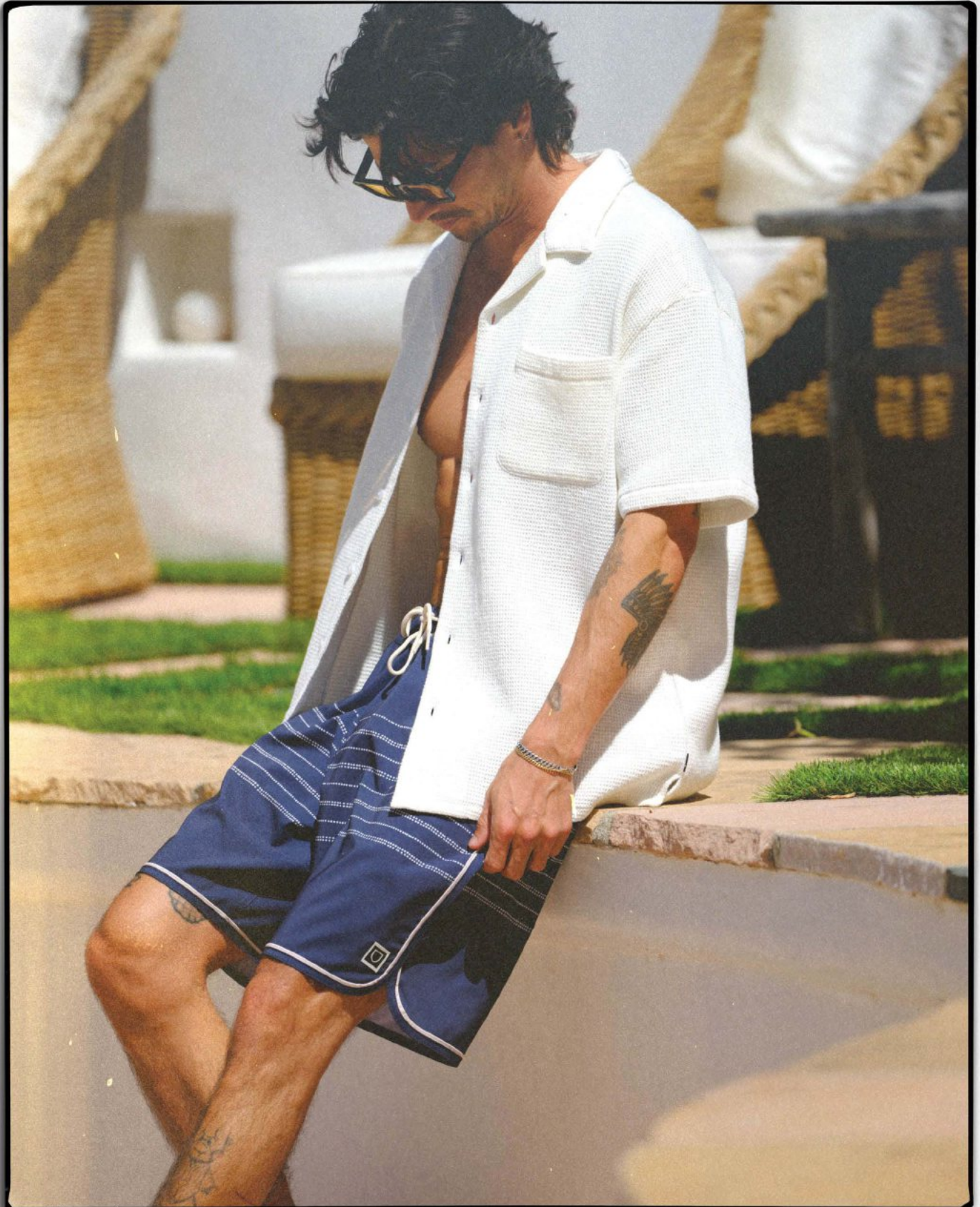


CLASSIC TRUCK

OUTSEAM | 17" WAISTBAND | Fixed FABRIC | 100% Polyester

SEAM DETAIL | Clean finished seams POCKET | Side pocket with velcro closure





TOP:
Bunker Resort Waffle Short Sleeve

BOTTOM:
Eclipse Boardshort

ECLIPSE BOARDSHORT 18"

Relaxed

28-38

\$40/\$80

- 96% Polyester 4% Elastane
- Vintage Trunk
- 150 Gsm Move Easy Poly Spandex
- Fixed Waistband
- Clean Finished Seams With Piping Down Side Seam And Leg Hem With Scallop Shape
- Back Patch Pocket With Bungee Key Loop And Label On Pocket
- Interior Sewn Eyelet For Drainage
- Quick Dry
- Shield Woven Label



BLACK/RED CURRENT
30120-BLKRC



BROWN BARK/SAND
30120-BRBSD



WASHED NAVY STRIPE
30120-WNVST



WASHED NAVY/MAUVE FLORAL
30120-WNYMF

D1

BLITZ BOARDSHORT 19"

Relaxed

28-38

\$45/\$90

- 96% Polyester 4% Elastane
- Performance Trunk
- 150 Gsm Move Easy Poly Spandex
- Fixed Waistband
- Clean Finished Seams
- Back Pocket With Bungee Key Loop And Invisible Zipper
- Interior Sewn Eyelet For Drainage
- Water Repellent And Quick Dry
- 19" Outseam



BLACK
30067-BLACK



BALSAM BRUSH FLORAL
30067-BLSBF



BASQUE COUNTRY PRINT
30067-BQCTP



OLIVE/BLACK STRIPE
30067-OLBKS

D1

CLASSIC TRUNK 17"

Relaxed

28-38

\$40/\$80

- 100% Polyester
- Classic Trunk
- 180 Gsm Polyester
- Fixed Waistband
- Clean Finished Seams
- Side Pocket With Velcro Closure
- Interior Sewn Eyelet For Drainage
- Quick Dry
- Shield Woven Label



BALSAM GREEN/OLIVE SURPLUS
30066-BLGOS



FRENCH BLUE
30066-FRHBL

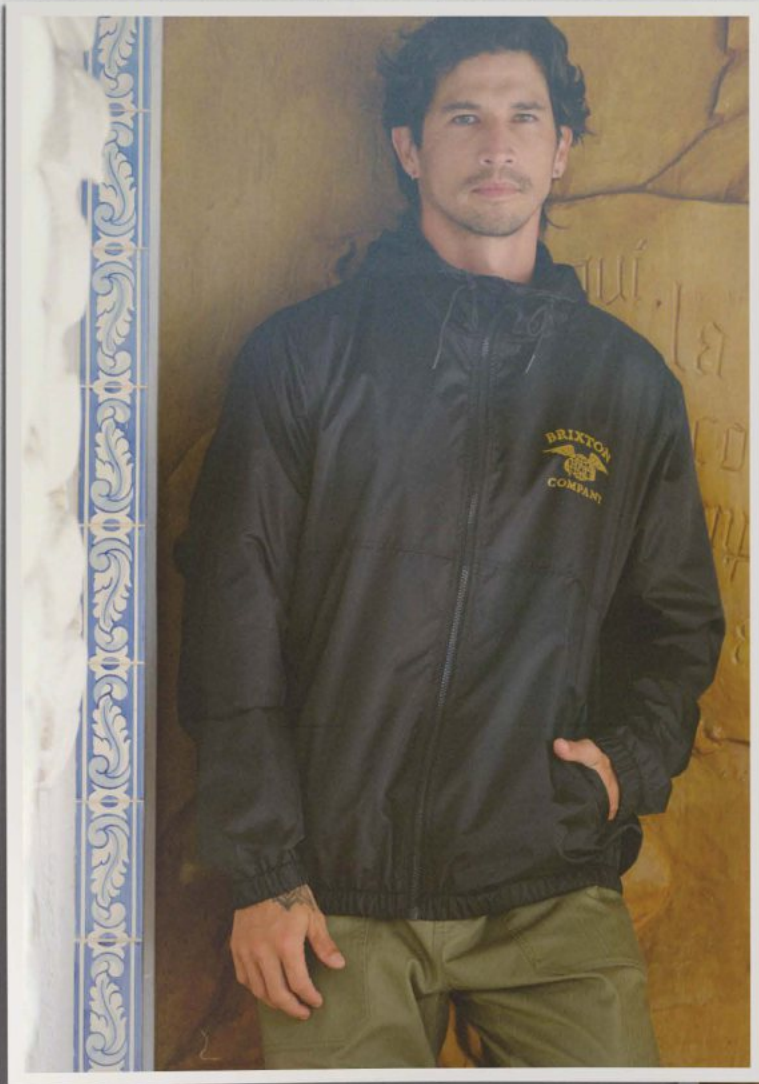


MAIZE/EARTHLY BROWN
30066-MZRTB



RUSTIC BROWN
30066-RSTBR

D1



HAT:
Fortress Snapback

TOP:
Hooded Mayson LW Jacket

BOTTOM:
Everyday Surplus E-Waist Pant

HOODED MAYSON LW JACKET

Standard

S-XXL

\$50/\$100

- 100% Polyester
- Light Weight Wind Repellant Shell
- 75 Gsm
- Pfas Free Coating
- Mesh Lining
- Adjustable Drawcords At The Hood
- Elastic Wrists And Waist
- Screen Print At Left Chest And Back



BLACK/BLACK
03523-BKBLK



WHITECAP
03523-WHTCP



D1

TRADEMARK LW GARAGE ZIP JACKET

Relaxed

S-XXL

\$55/\$110

- 65% Polyester 35% Cotton
- Light Weight Poly Cotton
- Metal Zipper
- Welt Pockets
- Elastic Cuff And Waistband
- Woven Label At Left Chest



BLACK
03500-BLACK



BALSAM
03500-BLSAM

D1

PAINTERS JACKET

Relaxed

S-XXL

\$55/\$110

- 100% Cotton
- 287 Gsm Cotton Herringbone
- Center Front Snap Closure
- Utility Chest Pocket
- Two Lower Patch Pockets
- Woven Label



FRENCH BLUE
03505-FRHBL



OLIVE SURPLUS
03505-OLVSP

D1

JOURNEY UTILITY VEST

Standard

S-XXL

\$75/\$150

- 97% Nylon 3% Elastane
- 145 Gsm 2-Way Stretch Nylon Ripstop
- Lightweight Utility Vest
- Mock Neck
- Front Zip With Zipper Garage
- Chest Utility Pockets With D-Ring
- Billowed Waist Pockets With Top Entry
- Back Map Pocket With Top Velcro Closure
- Reflective Beta Label At Left Chest



OLIVE SURPLUS TOPOGRAPHY
03508-OLSRT



D1

BRIXTON

COASTAL WARRIORS

SPRING 2027



HAT:
Laredo Straw Cowboy Hat

TOP:
Waylon LW Overshirt

BOTTOMS:
Builders Carpenter Pant

®

WAYLON LW OVERSHIRT

Relaxed

S-XXL

\$50/\$100

- 100% Cotton
- 165 Gsm Cotton Twill With Stripes
- Western Back Yoke And Front Pockets
- Pearl Snaps
- Cotton Denim With Front Embroidery Details



BLACK/OLIVE SURPLUS STRIPE
22906-BK0SS

D1



LIGHT STONE WASH
22906-LTSTW

\$55/\$110

BOWERY FLANNEL

Standard

S-XXL

\$45/\$90

- 60% Cotton 23% Polyester 17% Acrylic
- Anti-Scratch
- Wool Free
- Tri Blend
- 230 Gsm
- Vintage Soft Finish
- Yarn-Dyed
- Chest Pockets With Woven Label



GREY/BROWN/BLUE
01568-GYBRB

D1



SAND SHADOW PLAID
01568-SDSHP



**WHITECAP/GREEN/TAWNY
YELLOW**
01568-WCGTY

BOWERY FLANNEL

Standard

S-XXL

\$45/\$90

- 60% Cotton 23% Polyester 17% Acrylic
- Anti-Scratch
- Wool Free
- Tri Blend
- 230 Gsm
- Vintage Soft Finish
- Yarn-Dyed
- Chest Pockets With Woven Label
- 60% Cotton 21% Polyester 19% Acrylic

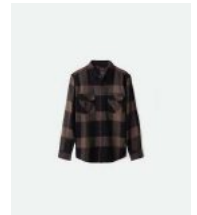


BLACK/CHARCOAL
01213-BKCHR

D1



BLACK/CREAM
01213-BKCRM



HEATHER GREY/CHARCOAL
01213-HTGCH



OCEAN
01213-OCEAN



HAT:
Fiddler

BOTTOM:
Paloma Shirt

PALOMA PRINT S/S WVN

Standard

S-XXL

\$45/\$90

- 80% Cotton 20% Rayon
- Vintage Italian "Shark" Collar
- Cotton/Rayon Blend
- Straight Hem
- Two Chest Pockets With Pocket Flap
- Logo Flag Label



BLACK CRANES
01545-BKCRN



**OFF WHITE BASQUE COUNTRY
PRINT**
01545-OWBCP



STEEL BLUE SCENIC
01545-STLBS

D1

PALOMA STRIPE S/S WVN

Standard

S-XXL

\$45/\$90

- 100% Cotton
- Vintage Italian "Shark" Collar
- Cotton Dobby Stripe
- Straight Hem
- Two Chest Pockets With Pocket Flap
- Logo Flag Label



ENIGMA BLUE TEXTURED STRIPE
01542-ENBTS



MAUVE TEXTURED STRIPE
01542-MUVTS

D1

CRU S/S WVN

Standard

S-XXL

\$50/\$100

- 55% Linen 45% Cotton
- Relaxed Straight Hem Button Down
- Linen Blend
- Traditional Collar
- Single Chest Pocket
- Logo Flag Label



EARTH SHADOW PLAID
01531-ERHSP



MAIZE/EARTHY BROWN
01531-MZRTB

D1

CRU PRINT S/S WVN

Standard

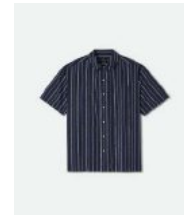
S-XXL

\$45/\$90

- 55% Cotton 45% Rayon
- Relaxed Straight Hem Button Down
- 97 Gsm Cotton Blend
- Left Chest Pocket
- Enzyme Softener Wash
- Logo Flag Label



MAUVE GEO
22910-MUVGO



WASHED NAVY STRIPE
22910-WNVST

D1

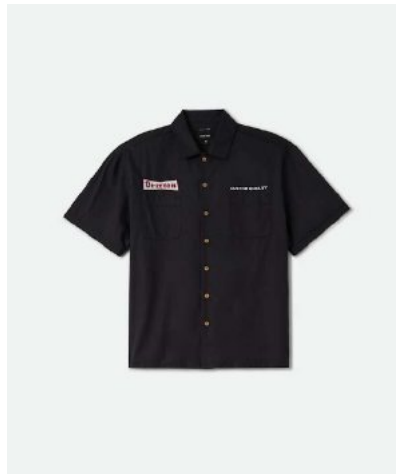
CRU CLUB S/S WVN

Standard

S-XXL

\$45/\$90

- 80% Cotton 20% Rayon
- Relaxed Straight Hem Button Down
- Cotton/Rayon Blend
- Two Chest Pockets
- Embroidery On Front
- Screenprint On Back
- Logo Flag Label



BLACK/RED
01550-BKRED



OFF WHITE/ENIGMA BLUE
01550-OFWEB

D1

SANFORD OXFORD S/S WVN

Standard

S-XXL

\$40/\$80

- 63% Cotton 35% Polyester 2% Elastane
- Standard Curved Hem Button Down
- Oxford Weave
- Left Chest Pocket With Woven Label
- Button Down Collar
- 62% Cotton 36% Polyester 2% Elastane



BLACK
01503-BLACK



DUSTY BLUE
01503-DUSBL



OFF WHITE
01503-OFFWH



OLIVE SURPLUS
01503-OLVSP

D1

CHARTER PRINT S/S WVN

Standard

S-XXL

\$40/\$80

- 62% Cotton 36% Polyester 2% Elastane
- Standard Curved Hem Button Down
- Stretch Construction
- Enzyme Softener Wash
- Left Chest Pocket With A Woven Label



BROWN BARK/RUSTIC BROWN STRIPE
01569-BBRBS



BLACK/CINDER GREY GEO
01569-BCDGG



BLACK MICRO FLORAL
01569-BLMCF



BALSAM BRUSH FLORAL
01569-BLSBF



ENIGMA BLUE GEO
01569-ENGBG



OFF WHITE/ENIGMA BLUE STRIPE
01569-OWFRS



OFF WHITE MICRO TRI GEO
01569-OWMTG



WASHED NAVY/MAUVE FLORAL
01569-WNYMF

D1

CHARTER LINEN S/S WVN

Standard

S-XXL

\$50/\$100

- 55% Linen 45% Cotton
- Standard Curved Hem Button Down
- Yarn Dye Plaid
- Cotton / Linen Blend
- Enzyme Softener Wash
- Left Chest Pocket With A Woven Label



OFF WHITE PLAID
01236-OFWTP



STEEL BLUE PLAID
01236-STLBP

D1

BUNKER RESORT WAFFLE S/S WVN

Standard

S-XXL

\$45/\$90

- 100% Cotton
- Flat Camp Collar Style
- Cotton Waffle Fabric
- Straight Hem
- Left Chest Pocket
- Logo Flag Label



OFF WHITE WAFFLE
01546-OFWHW



STEEL BLUE WAFFLE
01546-STLBW

D1

THE DEXTER TEXTURED STRIPE S/S

Standard

S-XXL

\$45/\$90

- 100% Cotton
- Classic Collar And Straight Hem
- Full Zip With 2 Way Zipper
- Two Chest Pockets
- Textured Stripe
- Logo Flag Label



OFF WHITE/BROWN BARK STRIPE
01509-OWBBS

D1



TOP:
Trademark Half Zip LS

BOTTOM:
Trademark Chino Short

TRADEMARK HALF ZIP L/S

Standard

S-XXL

\$50/\$100

- 100% Cotton
- Pop Over Shirt With Half Zip Center Front Placket
- Flat Collar
- Straight Hem
- Dual Top-Entry Chest Pockets
- Trademark Woven Label At Left Chest Pocket



BLUE CHAMBRAY/NAVY MICRO STRIPE
01543-BCNMS

D1



BALSAM
01543-BLSAM

BUILDERS OLSON S/S WVN

Standard

S-XXL

\$45/\$90

- 65% Polyester 35% Cotton
- 150 Gsm Poly Cotton Twill
- Chest Pockets
- Pencil Holder At Pocket Flap
- Parsons Patch On Left Chest



OFF WHITE MULTI STRIPE
22916-OFWMS

D1



WASHED BLACK MICRO PLAID
22916-WHBMP

JOURNEY S/S BUTTON DOWN WVN

Standard

S-XXL

\$45/\$90

- 100% Polyester
- 148 Gsm Poly Square Mesh
- Traditional Collar
- Straight Hem
- Double Chest Pockets
- Pencil Holder At Pocket Flap
- Silicone Beta Label
- Moisture Wicking And Antimicrobial



OCEAN STRIPE
01566-OCNST

D1



RUSTIC BROWN
01566-RSTBR

JOURNEY LW L/S WVN

Standard

S-XXL

\$50/\$100

- 100% Polyester
- 148 Gsm Poly Square Mesh
- Traditional Collar
- Straight Hem
- Double Chest Pockets
- Pencil Holder At Pocket Flap
- Silicone Beta Label
- Moisture Wicking And Antibacterial
- Moisture Wicking And Antimicrobial



BEIGE
22918-BEIGE



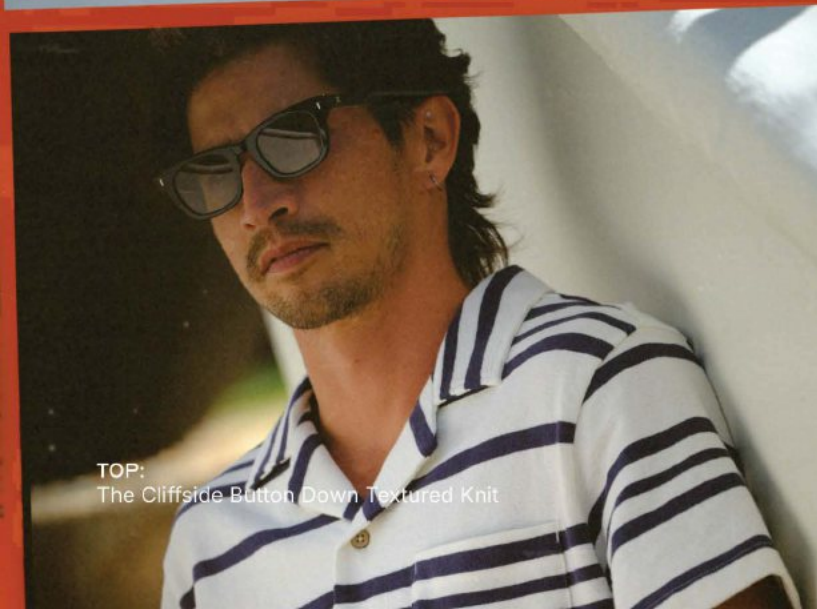
OCEAN/RUSTIC BROWN PLAID
22918-OCRBP

D1

BRIXTON

COASTAL WORKS

SPRING 2027



TOP:
The Cliffside Button Down Textured Knit

BOTTOM:
Everyday Corduroy Short

CLIFFSIDE TEXTURED BUTTON DOWN

Relaxed

S-XXL

\$45/\$90

- 100% Cotton
- Camp Collar With Button Down
- Left Chest Pocket
- Vent At Side Seam
- Logo Flag Label



OFF WHITE/WASHED NAVY STRIPE
23199-OWWNS

D1

THE HUGO S/S POLO

Relaxed

S-XXL

\$45/\$90

- 100% Cotton
- Johnny Collar With Rib
- Color Blocked Back
- Sleeve And Collar
- Logo Flag Label



WASHED NAVY COLORBLOCKED
23195-WHNCB

D1

SHIELD STRIPED S/S KNIT

Relaxed

S-XXL

\$30/\$60

- 100% Cotton
- Crew With Rib Collar
- Cotton Cross Loop Knit
- Left Chest Woven Label



WASHED NAVY/OFF WHITE STRIPE
23196-WNOWS

D1



WET SAND/OFF WHITE STRIPE
23196-WSOWS

BOXY BASEBALL TEE

Relaxed

S-XXL

\$30/\$60

- 100% Cotton
- 250 Gsm Cotton
- Binded Collar
- Left Chest Screen Print
- Two Button Placket
- 1/2 Sleeve



HEATHER GREY/BLACK
23079-HTGBK

D1

JOURNEY S/S TEE

Relaxed

S-XXL

\$30/\$60

- 100% Polyester
- Breathable Mesh Jacquard
- Reflective Beta Logo On Left Chest
- Upf Rated
- Moisture Wicking And Antibacterial
- Printed Artwork



OCEAN STRIPE
23200-OCNST

D1



OLIVE SURPLUS TOPOGRAPHY
23200-OLSRT

JOURNEY S/S JERSEY

Relaxed

S-XXL

\$35/\$70

- 100% Polyester
- Breathable Mesh Jacquard In Rugby Shirt
- Woven Patch And Reflective Beta Label On Chest
- Screen Print On Back
- Moisture Wicking And Antibacterial



OCEAN/OLIVE SURPLUS STRIPE
23201-OCOSS

D1



HAT:
Eastgate Snap Back

TOP:
Baseline Pocket Tee

BOTTOM:
Everyday Surplus

BRIXTON BASELINE HENLEY TEE

Standard

S-XXL

\$20/\$40

- 100% Cotton
- 187 Gsm Cotton Garment Dye
- Ribbed Set In Collar
- Single Needle Turn Back Stitch At Hem
- Side Seam Woven Label
- 3 Button Placket Henley



BLACK
23054-BLACK



FRENCH BLUE VINTAGE WASH
23054-FRBWW



MAUVE VINTAGE WASH
23054-MUVWW



OFF WHITE VINTAGE WASH
23054-OFVWW



OLIVE SURPLUS VINTAGE WASH
23054-OVSVW

D1

BRIXTON BASELINE POCKET TEE

Standard

S-XXL

\$20/\$40

- 100% Cotton
- 187 Gsm Cotton Garment Dye
- Ribbed Set In Collar
- Single Needle Turn Back Stitch At Hem
- Side Seam Woven Label
- Left Chest Pocket



BLACK
23053-BLACK



FRENCH BLUE VINTAGE WASH
23053-FRBWW



MAUVE VINTAGE WASH
23053-MUVWW

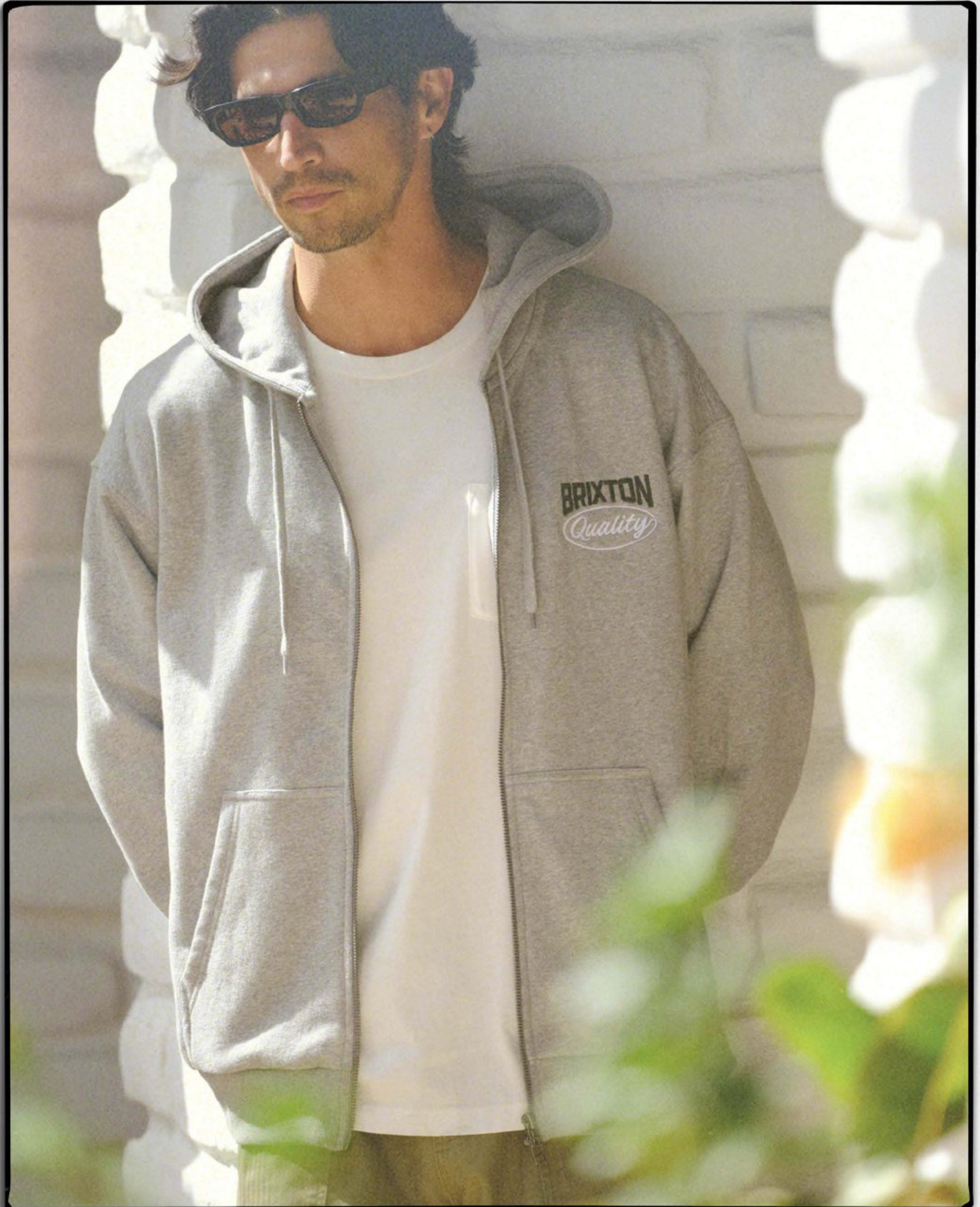


OFF WHITE VINTAGE WASH
23053-OFVWW



OLIVE SURPLUS VINTAGE WASH
23053-OVSVW

D1



HAT:
Lambert Zip Hoodie

TOP:
Baseline Pocket Tee

BOTTOM:
Everyday Surplus Short

LAMBERT ZIP HOOD

Standard

S-XXL

\$50/\$100

- 80% Cotton 20% Polyester
- Left Chest Embroidery
- Center Back Screenprint



BALSAM
23242-BLSAM



HEATHER GREY
23242-HTGRY

D1

STRATON EMBROIDERED ZIP HOOD

Standard

S-XX

\$50/\$100

- 80% Cotton 20% Polyester
- Left Chest Embroidery



BLACK
23241-BLACK



ENIGMA BLUE
23241-ENGBL

D1

MAYSON HOOD

Standard

S-XXL

\$45/\$90

- 80% Cotton 20% Polyester
- Left Chest And Center Back Screenprint



ENIGMA BLUE
23243-ENGBL



RUSTIC BROWN
23243-RSTBR

D1

TRADEMARK HOOD

Standard

S-XXL

\$45/\$90

- 80% Cotton 20% Polyester
- Left Chest Woven Label



BALSAM
23047-BLSAM



HEATHER GREY
23047-HTGRY

D1

CREST II HOOD

Standard

S-XXL

\$45/\$90

- 80% Cotton 20% Polyester
- Left Chest And Center Back Screenprint



BLACK/GREY/GOLD
22127-BKGYG



HEATHER GREY
22127-HTGRY

D1

BRIXTON BASELINE CREW FLEECE

Standard

S-XXL

\$50/\$100

- 100% Cotton
- 350 Gsm Cotton Fleece
- Ribbed Waistband At Cuffs And Hem
- Side Seam Woven Label



BLACK
23050-BLACK



FRENCH BLUE VINTAGE WASH
23050-FRBWW



MAUVE VINTAGE WASH
23050-MUWW



OLIVE SURPLUS VINTAGE WASH
23050-OVSWW

D1

BRIXTON BASELINE HOOD FLEECE

Standard

S-XXL

\$55/\$110

- 100% Cotton
- 350 Gsm Cotton Fleece
- Front Pocket
- Ribbed Waistband At Cuffs And Hem
- Drawcords
- Side Seam Woven Label



BLACK
23051-BLACK



FRENCH BLUE VINTAGE WASH
23051-FRBVW



MAUVE VINTAGE WASH
23051-MUVVW

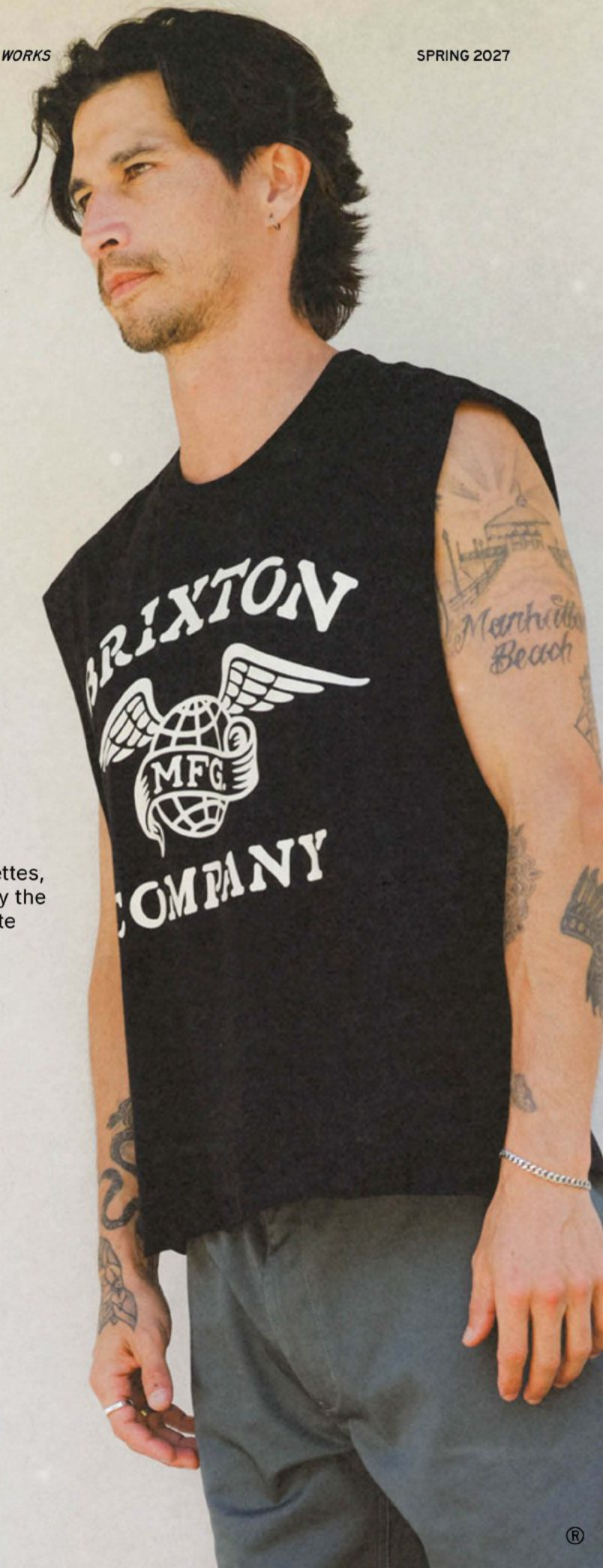


OLIVE SURPLUS VINTAGE WASH
23051-OVSVW

D1

TEE FIT GUIDE

A range of tee fits built for everyday wear. From classic proportions to oversized and boxy silhouettes, each style is shaped with intention and defined by the details set it apart. Fabrics and construction create tees that move between work, travel, and life.



ATKINS SS



STANDARD FIT

A timeless silhouette with a clean shape that feels broken in from the first wear. Constructed with a set-in sleeve, taped seams, and a ribbed collar that holds its form wash after wash. A precise standard fit through the chest and body keeps the silhouette clean and consistent.

IDLEWAY S/S



OVERSIZED FIT

The Oversized Fit is engineered with a dropped shoulder, oversized ribbed crewneck, and reinforced seams to support the extra volume without losing shape. Cut with intentional extra room through the chest and body for a fit that feels effortless from the first wear.

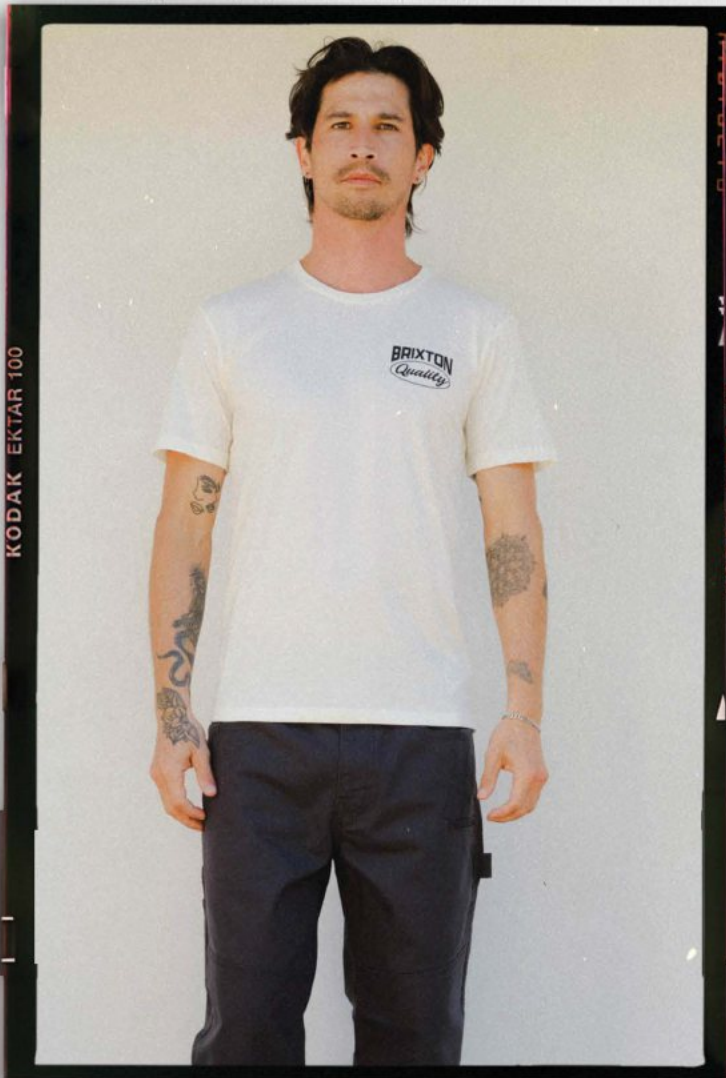
LAMBERT S/S



BOXY FIT

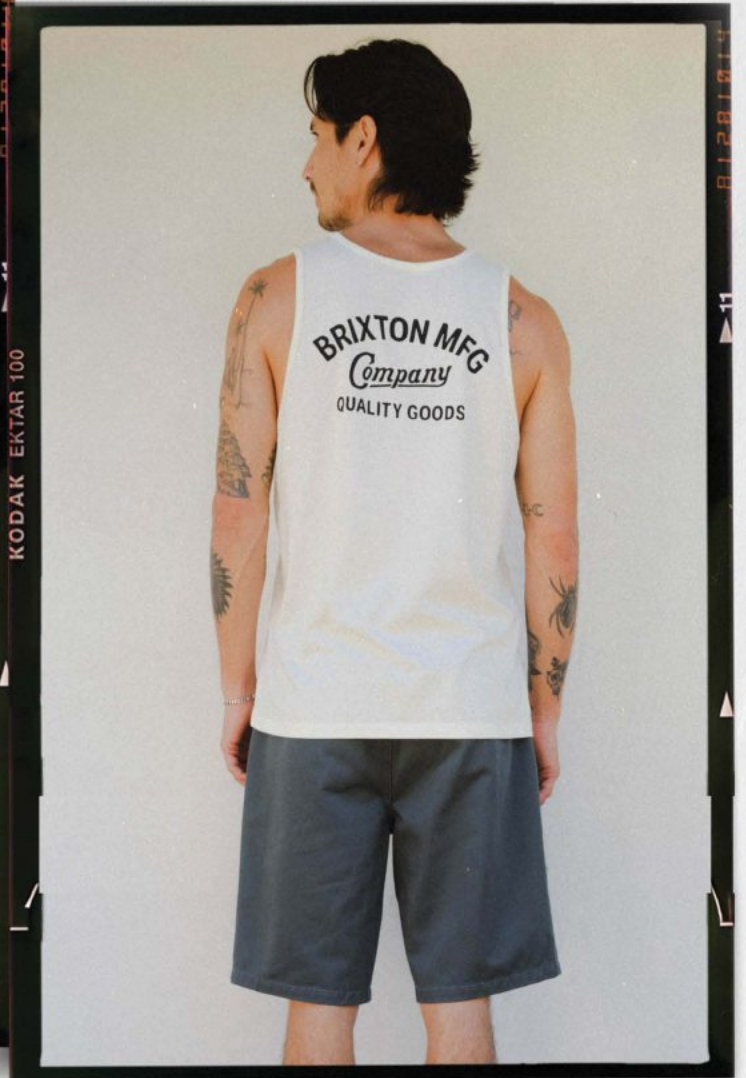
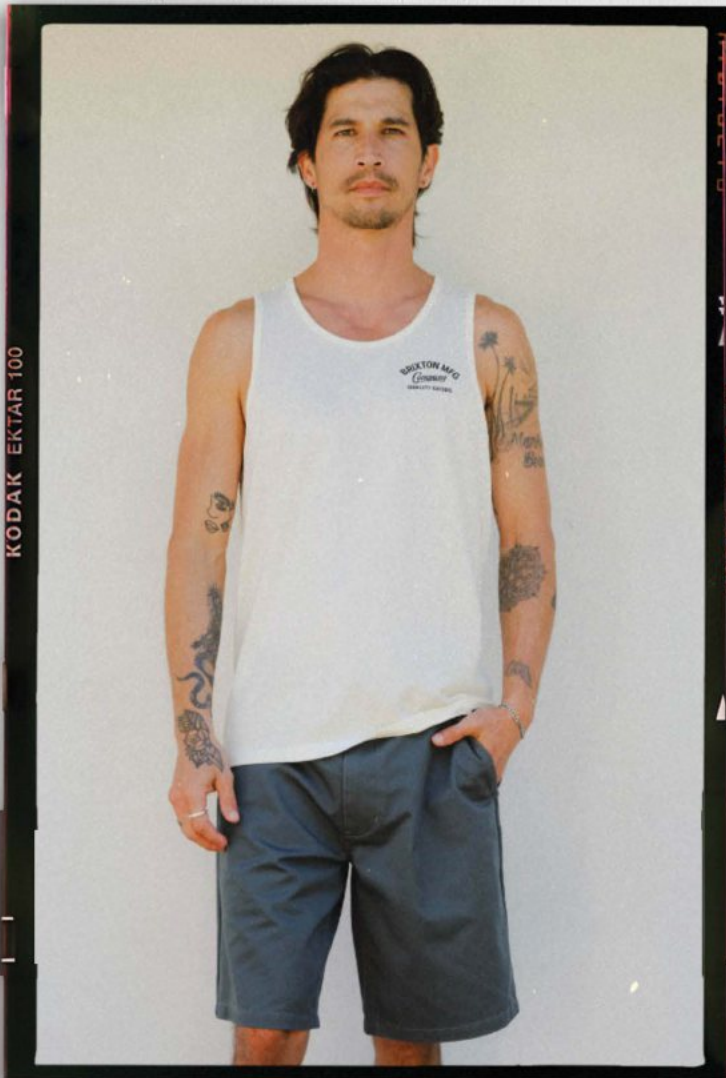
The Boxy Fit is engineered with a squared, dropped shoulder and shortened body length for a clean, modern silhouette. The wider cut through the chest and body creates a relaxed shape without sacrificing structure. Finished with a reinforced ribbed crewneck and clean hemline designed to sit perfectly at the waist.

LAMBERT FITTED S/S

**FITTED**

The Fitted Fit is cut close to the body with a tapered silhouette that follows the natural contour of the frame. Constructed with a set-in sleeve and narrow ribbed crewneck for a clean, streamlined finish. The precise cut through the chest and torso holds its shape wash after wash without sacrificing comfort.

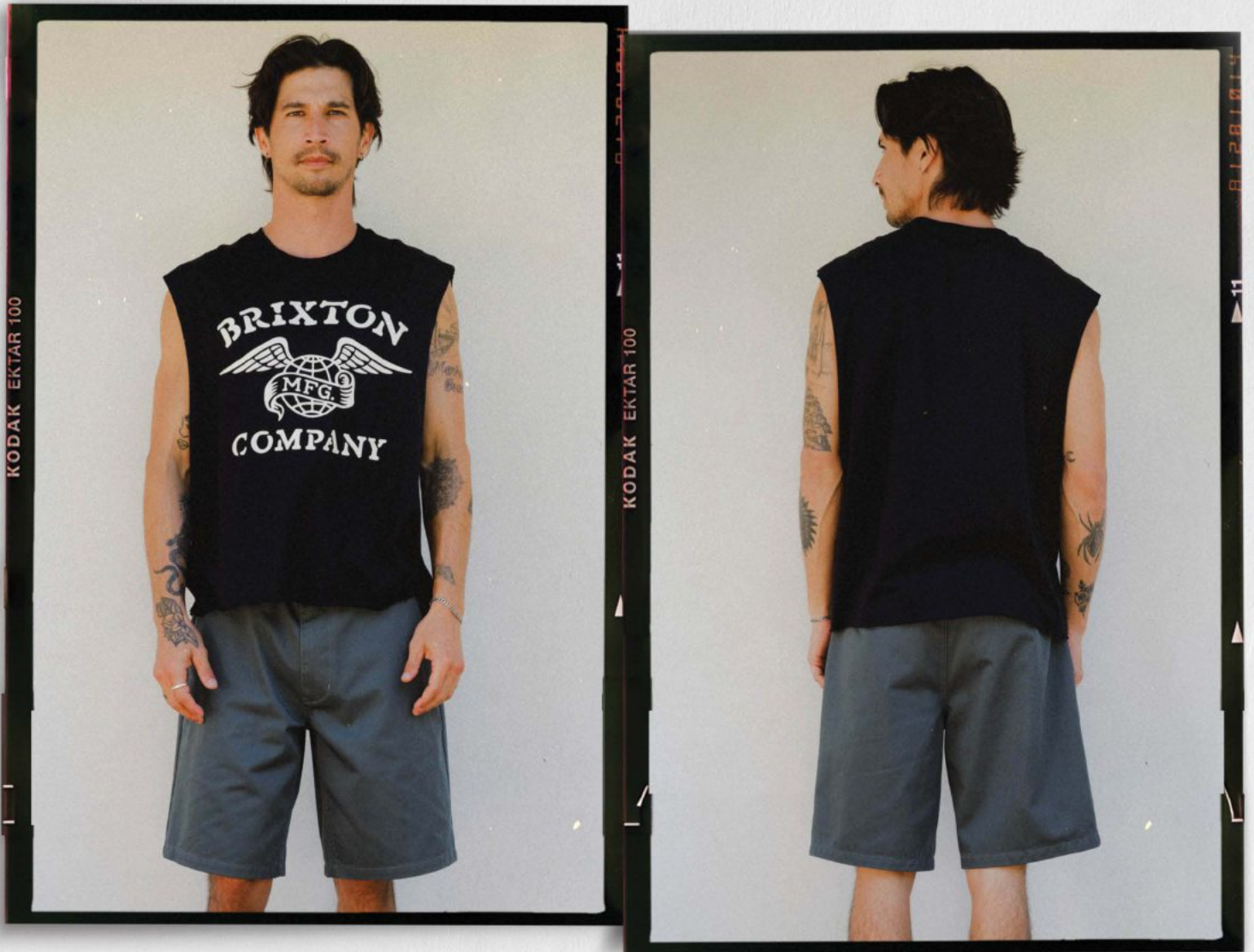
STRATON TANK TOP



TAILORED TANK

The Classic Tailored Tank features a streamlined silhouette with structured shoulder straps and a clean finished hem for a refined, intentional look. Engineered with a close cut through the chest and torso that sits smooth against the body without restricting movement. Built on a lightweight jersey construction that delivers comfort and polish in equal measure.

MAYSON MUSCLE TANK



MUSCLE TANK

The Boxy Muscle Tank is cut with a wider chest opening and deep armhole for a relaxed athletic silhouette that sits clean on the body. Finished with raw cut seams at the sleeves for an undone, effortless edge. Built from a lightweight jersey that holds its shape and moves with you through every wear.

MAYSON MUSCLE TANK

Relaxed

S-XXL

\$20/\$40

- 60% Cotton 40% Polyester
- Center Front Screenprint



BLACK
23198-BLACK



OFF WHITE
23198-OFFWH

D1

STRATON TANK TOP

Slim

S-XXL

\$20/\$40

- 60% Cotton 40% Polyester
- Left Chest And Center Back Screenprint



BLACK
23197-BLACK



ENIGMA BLUE
23197-ENGBL



OFF WHITE
23197-OFFWH

D1

LAMBERT FITTED S/S TEE

Slim

S-XXL

\$20/\$40

- 60% Cotton 40% Polyester
- Left Chest Screenprint



HEATHER GREY
23308-HTGRY



OFF WHITE
23308-OFFWH

D1

HIRSCH S/S OVERSIZED TEE

Oversized

S-XXL

\$25/\$50

- 100% Cotton
- Left Chest And Center Back Screenprint
- High Density Ink On The Brxtn



BLACK
17676-BLACK



OLIVE
17676-OLIVE

D1

IDLEWAY S/S OVERSIZED TEE

Oversized

S-XXL

\$25/\$50

- 100% Cotton
- Left Chest Embroidery
- Center Back Screenprint



BLACK
17677-BLACK



CREAM
17677-CREAM

D1

LAMBERT S/S BOXED CROP TEE

Relaxed

S-XXL

\$25/\$50

- 100% Cotton
- Left Chest And Center Back Screenprint



BLACK
17678-BLACK



CREAM
17678-CREAM

D1

MAYSON S/S BOXED CROP TEE

Relaxed

S-XXL

\$25/\$50

- 100% Cotton
- Left Chest And Center Back Screenprint



BLACK
17679-BLACK



OLIVE
17679-OLIVE

D1

PHOENIX S/S OVERSIZED TEE

Oversized

S-XXL

\$25/\$50

- 100% Cotton
- Left Chest And Center Back Screenprint
- Crackle Art Effect Within The Ink



BLACK
23246-BLACK



HEATHER GREY
23246-HTGRY

D1

RADIATOR S/S BOXED CROP TEE

Relaxed

S-XXL

\$25/\$50

- 100% Cotton
- Left Chest And Center Back Screenprint



BLACK
23247-BLACK



HEATHER GREY
23247-HTGRY

D1

STRATON S/S POCKET TEE

Standard

S-XXL

\$25/\$50

- 90% Cotton 10% Polyester
- Left Chest Embroidery Over Pocket



HEATHER GREY
17658-HTGRY



NAVY
17658-NAVY

D1

ATKINS S/S STND TEE

Standard

S-XXL

\$22.50/\$45

- 100% Cotton
- Left Chest And Center Back Screenprint



BLACK
17659-BLACK



CREAM
17659-CREAM

D1

RIBBON S/S STND TEE

Standard

S-XXL

\$25/\$50

- 100% Cotton
- Left Chest And Center Back Screenprint
- Worn Wash



ENIGMA BLUE WORN WASH
17660-ENBWW



RUSTIC BROWN WORN WASH
17660-RSBWW

D1

HUBAL S/S STND TEE

Standard

S-XXL

\$22.50/\$45

- 100% Cotton
- Left Chest And Center Back Screenprint



BLACK
17661-BLACK



SILVER GREY
17661-SLVGY

D1

DROP IN S/S STND TEE

Standard

S-XXL

\$20/\$40

- 100% Cotton
- Left Chest And Center Back Screenprint
- Pop Color Has High Density Ink



BALSAM
17662-BLSAM



SILVER GREY
17662-SLVGY

D1

SPEEDY S/S STND TEE

Standard

S-XXL

\$20/\$40

- Various Fabrics
- Cotton (Cream)
- Cotton/Polyester (Htgry)
- Left Chest And Center Back Screenprint



CREAM
23244-CREAM



HEATHER GREY
23244-HTGRY

D1

BOYCE S/S STND TEE

Standard

S-XXL

\$22.50/\$45

- 100% Cotton
- Left Chest And Center Back Screenprint



BLACK
17664-BLACK



CREAM
17664-CREAM

D1

VOLTAGE S/S STND TEE

Standard

S-XXL

\$20/\$40

- 100% Cotton
- Left Chest And Center Back Screenprint



BLACK
17666-BLACK



OLIVE
17666-OLIVE

D1

DELMAR S/S STND TEE

Standard

S-XXL

\$20/\$40

- 100% Cotton
- Left Chest And Center Back Screenprint



BLACK
17668-BLACK



OLIVE
17668-OLIVE

D1

EASTGATE S/S STND TEE

Standard

S-XXL

\$20/\$40

- 100% Cotton
- Left Chest And Center Back Screenprint



BALSAM
17669-BLSAM



CREAM
17669-CREAM

D1

VENTURE S/S STND TEE

Standard

S-XXL

\$25/\$50

- 100% Cotton
- Left Chest And Center Back Screenprint
- Worn Wash
- Crackle Effect Within The Art



ENIGMA BLUE WORN WASH
17670-ENBWW



RUSTIC BROWN WORN WASH
17670-RSBWW

D1

BUZZ S/S STND TEE

Standard

S-XXL

\$20/\$40

- 100% Cotton
- Left Chest And Center Back Screenprint



BLACK
23245-BLACK



SILVER GREY
23245-SLVGY

D1

LIGHTHOUSE S/S STND TEE

Standard

S-XXL

\$25/\$50

- 100% Cotton
- Left Chest And Center Back Screenprint
- Worn Wash
- Crackle Effect Within The Art



ENIGMA BLUE WORN WASH
17671-ENBWW



RUSTIC BROWN WORN WASH
17671-RSBWW

D1

TAVERN S/S STND TEE

Standard

S-XXL

\$20/\$40

- 100% Cotton
- Left Chest And Center Back Screenprint



BALSAM
17672-BLSAM



CREAM
17672-CREAM

D1

LODGE S/S STND TEE

Standard

S-XXL

\$20/\$40

- 100% Cotton
- Left Chest And Center Back Screenprint



NAVY
17673-NAVY



SILVER GREY
17673-SLVGY

D1

FORTRESS S/S STND TEE

Standard

S-XXL

\$20/\$40

- 100% Cotton
- Left Chest And Center Back Screenprint



BLACK
17674-BLACK



SILVER GREY
17674-SLVGY

D1

HARWELL S/S STND TEE

Standard

S-XXL

\$20/\$40

- Various Fabrics
- Cotton (Olive)
- Cotton/Polyester (White)
- Left Chest And Center Back Screenprint



OLIVE
17675-OLIVE



WHITE
17675-WHITE

D1

CREST II S/S STND TEE

Standard

S-XXL

\$20/\$40

- 100% Cotton
- Left Chest And Center Back Screenprint



BLACK/WHITE
17569-BKWHT



OLIVE/STONE/TAWNY YELLOW
17569-OLSTY



SILVER GREY/NAVY/JADE
17569-SVGNJ



WHITE/BLACK
17569-WHBLK

D1

REGAL S/S STND TEE

Standard

S-XXL

\$20/\$40

- 100% Cotton
- Left Chest And Center Back Screenprint



BLACK/TAWNY YELLOW/DARK GREY
17570-BTWDG



**CREAM/GINGER
BISCUIT/FRENCH BLUE**
17570-CGBFB

D1

GRADE S/S STND TEE

Standard

S-XXL

\$20/\$40

- 100% Cotton
- Left Chest And Center Back Screenprint



BLACK/WHITE
16411-BKWHT



**HEATHER
GREY/BLACK/EARTHLY BROWN**
16411-HGRFB



NAVY/SAND/TAWNY YELLOW
16411-NYSTY



WHITE/BLACK
16411-WHBLK

D1

OATH V S/S STND TEE

Standard

S-XXL

\$20/\$40

- 100% Cotton
- Left Chest And Center Back Screenprint



BLACK/ENIGMA BLUE/TAWNY YELLOW
17572-BEBTY



CREAM/BLUE AZURE/GINGER
BISCUIT
17572-CBAGB

D1

LINWOOD S/S STND TEE

Standard

S-XXL

\$20/\$40

- 100% Cotton
- Left Chest And Center Back Screenprint



BLACK/WHITE
17644-BKWHT



BALSAM/NAVY/STONE
17644-BLSNS



SILVER GREY/NAVY/WET SAND
17644-SGNWS



WHITE/BLACK
17644-WHBLK

D1

BRIXTON & USPS – FRIENDLY UNION



“OUT FOR DELIVERY”

USPS

Brixton links up with one of America's most iconic institutions for a collaboration that feels as classic as it does unexpected. The USPS collection brings together the postal service's rich workwear heritage and recognizable visual identity, translated into a range of headwear and garments designed for life on the move. Delivered in true Brixton fashion.

USPS LETTER CARRIER FIDDLER

XS-XL

\$30/\$60

- 100% Cotton
- Custom Brixton X Usps Metal Pin At Center Front
- Custom Quilted Liner



SLATE BLUE
12321-SLBLU

D2

USPS LOEWY PATCH TRUCKER HAT

Semi-Structured Medium Profile 5-Panel

O/S

\$22.50/\$45

- Front Panel/Visor: 100% Cotton Back
- Four Panels: 100% Polyester
- Merrowed Edge Embroidered Patch
- Mesh Back
- Moisture Wicking Sweatband
- Adjustable Snapback Closure



NAVY
12322-NAVY

D2

USPS PONY EXPRESS SNAPBACK

Semi-Structured Medium Profile 5-Panel

O/S

\$25/\$50

- 100% Cotton
- Front Screen Print
- Side Panel Embroidery
- Moisture Wicking Sweatband
- Adjustable Snapback Closure



OFF WHITE/BLACK
12323-OFFBK

D2

USPS LETTER CARRIER JACKET

Relaxed

S-XXL

\$80/\$160

- 100% Polyester
- 1960S Letter Carrier Inspired Work Jacket
- Two Chest Pockets With Flaps
- Two Hand Welt Pockets
- Zip Front Closure
- Brixton X Usps Metal Pin
- Usps Patch Included On Hangtag



SLATE BLUE
03528-SLBLU

D2

USPS FRIENDLY UNION FLANNEL

Relaxed

S-XXL

\$50/\$100

- 100% Cotton
- Cotton Yarn Dyed Flannel
- Usps X Brixton Friendly Union Woven Label At Bottom Hem
- Two Top Entry Chest Pockets With Button Closure
- Usps Patch Included On Hangtag



RED/WHITE/BLUE
01564-RDWTL

D2

USPS STAMPS S/S WOVEN

Standard

S-XXL

\$45/\$90

- 62% Cotton 36% Polyester 2% Elastane
- Custom Vintage Stamp All Over Print
- Single Left Chest Pocket
- Usps Patch Included On Hangtag



OFF WHITE/STAMPS
01565-OFWST

D2

USPS AIR MAIL POCKET TEE

Standard

S-XXL

\$30/\$60

- 100% Cotton
- Vintage Wash
- Left Chest Screen Print On Pocket
- Center Back Screen Print



WASHED NAVY
23297-WANAV

D2

USPS WING STENCIL RINGER TEE

Standard

S-XXL

\$30/\$60

- 100% Cotton
- Contrast Ringer Binding At Neck And Sleeve Opening
- Center Front Screen Print



OFF WHITE/RED
23298-OFFRD

D2

USPS PONY EXPRESS TEE

Standard

S-XXL

\$30/\$60

- 100% Cotton
- Front Embroidery
- Back Screen Print
- W



HEATHER GREY
23299-HTGRY

D2

USPS EAGLE MUSCLE TEE

Relaxed

S-XXL

\$30/\$60

- 60% Cotton 40% Polyester
- Front Screen Print



OFF WHITE
23300-OFFWH

D2

USPS WING STENCIL CREW FLEECE

Standard

S-XXL

\$50/\$100

- 100% Cotton
- Front And Back Screen Print
- Label At Bottom Hem



HEATHER GREY
23301-HTGRY

D2

USPS PONY EXPRESS HOOD

Standard

S-XXL

\$55/\$110

- 80% Cotton 20% Polyester
- Left Chest Embroidery
- Back Screen Print



WASHED BLACK
23302-WABLK

D2

USPS EAGLE HOOD

Standard

S-XXL

\$55/\$110

- 80% Cotton 20% Polyester
- Front And Back Screen Print



WASHED NAVY
23303-WANAV

D2

USPS LOEWY W RINGER TEE

Slim

XS-XL

\$30/\$60

- 100% Cotton
- 22" Hps
- Contrast Ringer Binding At Neck And Sleeve Opening
- Front And Back Screen Print



OFF WHITE/BLUE
23304-OFFBL

D2

USPS PONY EXPRESS W TEE

Slim

XS-XL

\$30/\$60

- 100% Cotton
- 22" Hps
- Front Screen Print



WASHED BLACK
23305-WABLK

D2



BRIXTON