




BRIXTON

SPRING 2027
MEN'S MAINLINE CATALOG

HEADWEAR

Hats are what Brixton was built on. These core silhouettes are the foundation of everything the brand stands for, each stitch a nod to the craftsmen, musicians, and free spirits who shaped its identity. Designed with purpose and built to last, this is craftsmanship rooted in culture and style that never asks for permission.



LAREDO WTHR GUARD COWBOY HAT

Brim Length: 10.5cm/4" - Crown Height: 12cm/4.75"

XS-XL

\$70/\$140

- 100% Wool Felt
- Hard Stiffness
- Cattleman Crown
- Moisture Wicking Adjustable Sweatband
- Double Wrapped Suede Band
- Metal Headwear Plaque



EARTHLY BROWN
11937-ERYBN



KHAKI
11937-KHAKI



RUSTIC BROWN
11937-RSTBR



D1

JUNIPER PACKABLE HAT

Brim Length: 8.9cm/3.5" - Crown Height: 10.4cm/4"

XS-L

\$50/\$100

- 100% Wool Felt
- Light Stiffness
- Grosgrain Band With Branded Metal Clasp At Back
- Moisture Wicking Adjustable Sweatband



BLACK
12120-BLACK



OFF WHITE
12120-OFFWH



RUSTIC BROWN
12120-RSTBR



D1

MESSER FEDORA

Brim Length: 6.5cm/2.5" - Crown
Height: 9.5cm/3.75"

XS-XL

\$40/\$80

- 100% Wool Felt
- Light Stiffness
- Teardrop Crown
- Adjustable Sweatband
- Faux Leather Band
- Metal Crest Pin



D1



BEIGE
10763-BEIGE



BLACK/BLACK
10763-BKBLK



BLACK
10763-BLACK



DEEP GREEN
10763-DEPGN



RUSTIC BROWN
10763-RSTBR



SAND
10763-SAND



WET SAND
10763-WTSND

MESSER PACKABLE FEDORA

Brim Length: 6.5cm/2.5" - Crown Height: 9.5cm/3.75"

XS-XL

\$45/\$90

- 100% Wool Felt
- Light Stiffness
- Teardrop Crown
- Adjustable Sweatband
- Grosgrain Band
- Metal Crest Pin



D1



BLACK/BLACK
10607-BKBLK

WESLEY FEDORA

Brim Length: 7cm/2.75" - Crown Height: 11cm/4.25"

XS-XL

\$40/\$80

- 100% Wool Felt
- Light Stiffness
- Teardrop Crown
- Adjustable Sweatband
- Leather Band
- Metal Headwear Plaque



D1



BEIGE
10761-BEIGE



BLACK
10761-BLACK



BLUE AZURE
10761-BLUAZ



DEEP GREEN
10761-DEPGN



RUSTIC BROWN
10761-RSTBR

STOUT PORK PIE

Brim Length: 4cm/1.5" - Crown Height: 9cm/3.5"

XS-XL

\$35/\$70

- 100% Wool Felt
- Medium Stiffness
- Uptick Brim
- Diamond Crown
- Adjustable Sweatband
- Custom Liner
- Metal Crest Clip



D1



BLACK/BLACK
10764-BKBLK



DEEP GREEN
10764-DEPGN



WET SAND
10764-WTSND

GAIN FEDORA

Brim Length: 4cm/1.5" - Crown Height: 10cm/4"

XS-XL

- 100% Wool Felt
- Medium Stiffness
- Uptick Brim
- Center Dent Crown
- Adjustable Sweatband
- Custom Liner
- Metal Crest Pin



D1



BLACK
10765-BLACK

\$35/\$70



BARK BROWN/BRONZE
10765-BRBRB

\$40/\$80

SOPHIA KNIT PACKABLE HAT

Brim Length: 8.25cm/3.25" - Crown Height: 10.5cm/4"

M/L-XS/S

\$35/\$70

- 100% Cotton
- Light Breathable Cotton Knit
- Jacquard Knit Pattern At Crown And Brim
- Adjustable Sweatband
- Metal Headwear Plaque



D1



FRENCH BLUE
12165-FRHBL



MAUVE
12165-MAUVE



NATURAL/NATURAL
12165-NATNT

MARA PANAMA RANCHER HAT

Brim Length: 9.8cm/3.75" - Crown Height: 11.4cm/4.5"

XS-L

\$150/\$300

- 100% Straw
- Panama Straw
- Two Tone Straw
- Moisture Wicking Adjustable Sweatband
- Metal Headwear Plaque
- Blanket Stitching



D1



BLACK/NATURAL
12328-BKNAT



TAN/BLACK BLANKET STITCH
12328-TNBBS



KODAK EKTAR 100



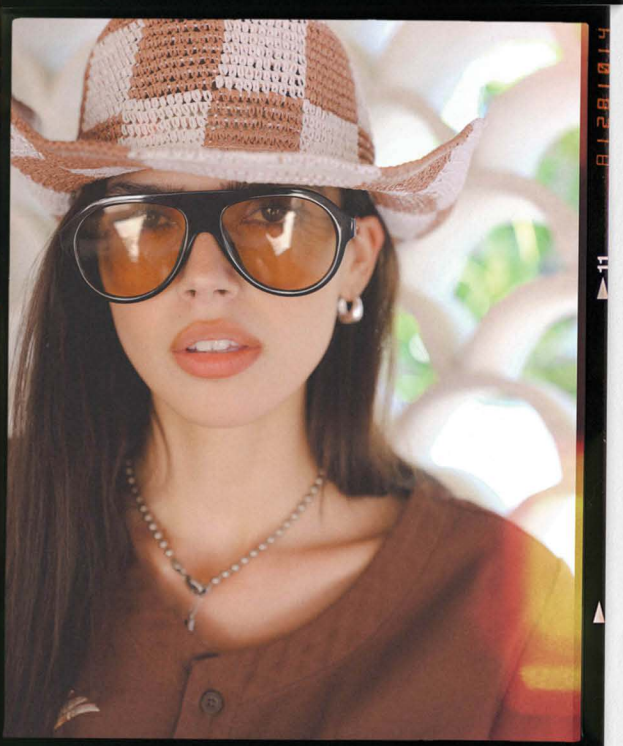
KODAK EKTAR 100



54

KODAK EKTAR 100

53



KODAK EKTAR 100

HAT:
Odessa Straw Packable Cowboy

TOP:
Baseball SS Woven

BOTTOM:
Chloe 5 Pocket Pant

MARLOW BANDANA STRAW RANCHER H

**Brim Length: 10cm/4" - Crown
Height: 11.2cm/4.375"**

XS-L

\$90/\$180

- 100% Straw
- Fine Tripilla Palm Straw
- Side And Back Pencil Roll Brim
- Removable Bandana
- Moisture Wicking Adjustable Sweatband



WHITECAP/WASHED NAVY STRIPE
12251-WCWNS



D1

HELENA STRAW SUN HAT

**Brim Length: 13cm/5.25" - Crown
Height: 12.5cm/5"**

M/L-XS/S

\$70/\$140

- Various Fabrics
- Crochet Raffia Straw (Tan)
- Patterned Paper Straw (Tnbrn)
- Shapeable Brim With Wire
- Teardrop Crown
- Moisture Wicking Adjustable Sweatband
- Metal Headwear Plaque



TAN
12006-TAN



TAN/BROWN
12006-TNBRN



D1

ODESSA STRAW PACKABLE COWBOY H

**Brim Length: 8.25cm/3.25" - Crown
Height: 12cm/4.75"**

M/L-XS/S

\$70/\$140

- 100% Straw
- Crochet Paper Straw
- Moisture Wicking Adjustable Sweatband
- Shapeable Wire Brim
- Cattleman Crown
- Metal Headwear Plaque
- Crochet Raffia Straw



MAUVE/WHITECAP
12004-MUVWC



TAN
12004-TAN



TAN/BLACK
12004-TNBLK



D1

LAREDO STRAW COWBOY HAT

Brim Length: 10.2cm/4" - Crown Height: 12cm/4.75"

XS-XL

\$85/\$170

- 100% Straw
- Bangora Straw
- Cattleman Crown With Custom Vent
- Double Wrapped Faux Suede Band
- Moisture Wicking Adjustable Sweatband
- Metal Headwear Plaque



BONE
12010-BONE



DARK ROAST
12010-DRKRS



D1

PORTO STRAW FEDORA

Brim Length: 9.8cm/3.75" - Crown Height: 11cm/4.25"

M/L-XS/S

\$65/\$130

- 100% Straw
- Paper Straw
- Teardrop Crown
- Window Pane Pattern Vent
- Triple Wrapped Suede Band
- Moisture Wicking Adjustable Sweatband
- Metal Headwear Plaque



TOASTED NATURAL
12065-TSTNL



D1

HARPER PLAID STRAW SUN HAT

Brim Length: 9.5cm/3.75" - Crown Height: 10cm/4"

XS-L

\$50/\$100

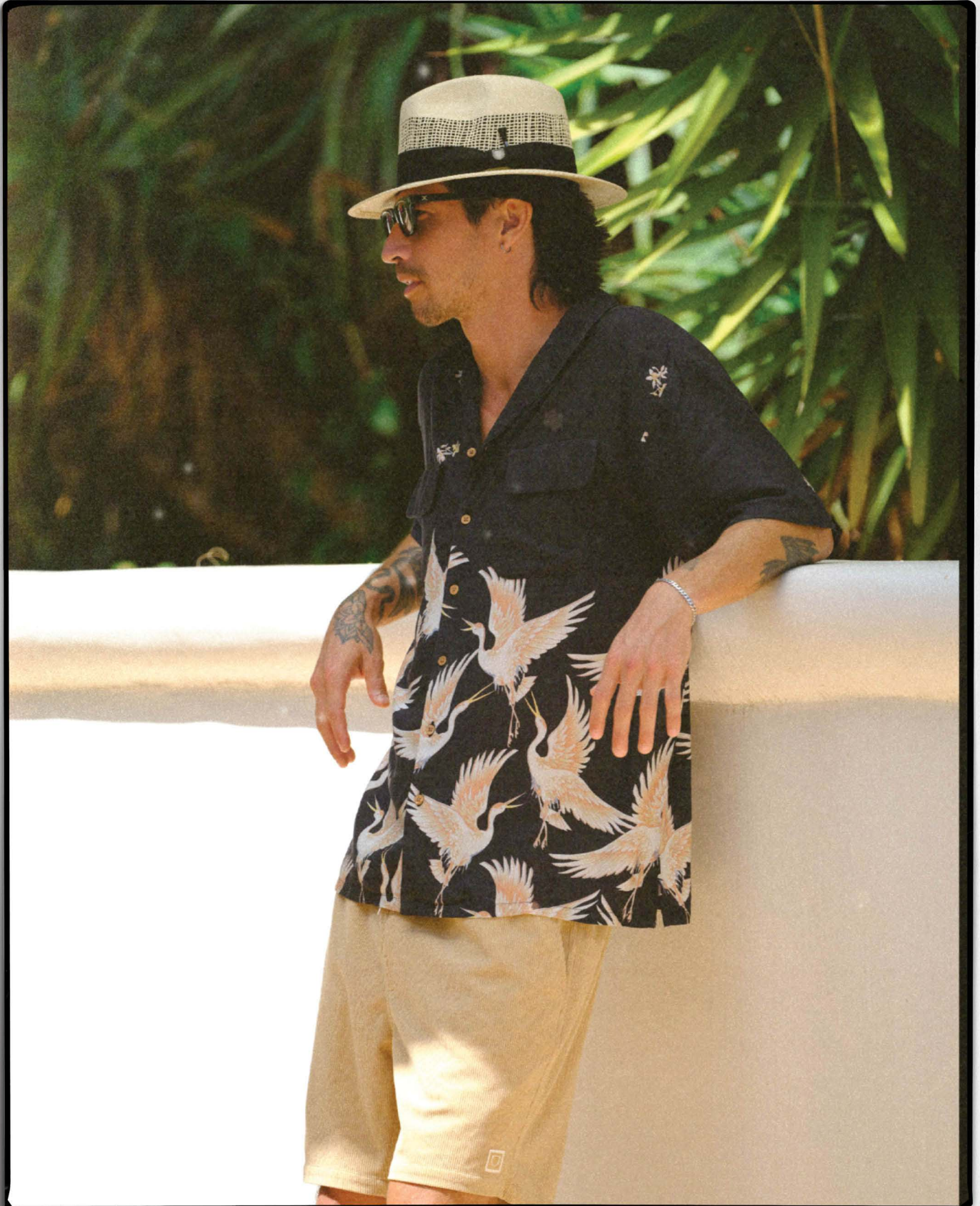
- 100% Straw
- Paper Straw
- Plaid Straw Open Weave
- Adjustable Sweatband
- Metal Headwear Plaque



NATURAL/RED CURRENT/FRENCH BLUE
12252-NRCFB



D1



HAT:
Marley Straw Golf Fedora

TOP:
Paloma SS Print

BOTTOM:
Everyday Corduroy Short

HORTON CB PACKABLE FEDORA

**Brim Length: 5.7cm/2.25" - Crown
Height: 11.8cm/4.75"**

XS-XL

\$30/\$60

- 100% Straw
- Paper Straw
- Grosgrain Band
- Moisture Wicking Adjustable Sweatband
- Metal Crest Pin



DARK TAN/LIGHT BROWN
11834-DKTLB



D1

MARLEY STRAW GOLF FEDORA

**Brim Length: 5.5cm/2.25" - Crown
Height: 11cm/4.25"**

XS-XL

\$45/\$90

- 100% Straw
- Bangora Straw
- Open Vent Crown
- Grosgrain Band
- Moisture Wicking Adjustable Sweatband
- Brixton Golf Tee Included
- Metal Crest Pin



NATURAL/BLACK
12254-NABLK



D1

BLAKE SUN HAT

**Brim Length: 8cm/3.25" - Crown
Height: 11.5cm/4.5"**

XS-XL

\$65/\$130

- 100% Straw
- Tripilla Straw
- Twisted Rope Band
- Teardrop Crown
- Moisture Wicking Adjustable Sweatband
- Metal Headwear Plaque



NATURAL
11828-NATUR



D1

JOANNA HAT

**Brim Length: 10cm/4" - Crown
Height: 12cm/4.75"**

XS-L

\$35/\$70

- 100% Straw
- Wheat Straw
- Teardrop Crown
- Adjustable Sweatband
- Grosgrain Band
- Metal Headwear Plaque



D1



HONEY
10784-HONEY



HONEY/LION
10784-HONLN

WESLEY STRAW PACKABLE FEDORA

**Brim Length: 7cm/2.75" - Crown
Height: 11cm/4.25"**

XS-XL

\$40/\$80

- 100% Straw
- Paper Straw
- Teardrop Crown
- Adjustable Sweatband
- Leather Band
- Metal Headwear Plaque



D1



TAN
10823-TAN

CASTOR FEDORA

**Brim Length: 4.5cm/1.75" - Crown
Height: 11.8cm/4.75"**

XS-XL

\$35/\$70

- 100% Straw
- Paper Straw
- Center Dent Crown
- Adjustable Sweatband
- Grosgrain Band
- Metal Crest Pin



D1



TAN
10767-TAN

RELAX PACKABLE LIFEGUARD HAT

Brim Length: 11cm/4.25" - Crown Height: 10.2cm/4"

O/S

\$40/\$80

- 100% Straw
- Stone Washed Tripilla Palm Straw
- Adjustable Neck Rope & Outside Band
- Merrowed Edge Patch
- Elastic Sweatband



D1



BROWN/BLACK/CREAM
12338-BRBKC



NATURAL/BLUE/RED
12338-NTRBR

MITCH PACKABLE SUN HAT

Brim Length: 11.5cm/4.5" - Crown Height: 10cm/4.25"

L/XL-S/M

\$30/\$60

- 100% Straw
- Paper Straw
- Teardrop Crown
- Elastic Sweatband
- Adjustable Neck Rope
- Metal Headwear Plaque



D1



NATURAL/BLACK MARL
11475-NTLBM



TAN
11475-TAN

BELLS LIFEGUARD HAT

Brim Length: 11cm/4.5" - Crown Height: 10.5cm/4.25"

O/S

\$40/\$80

- 100% Straw
- Palm Straw
- Cattleman Crown
- Elastic Sweatband
- Adjustable Neck Rope
- Leather Fold Label



D1



TAN
12325-TAN



HAT:
Ellee Straw Bucket Hat

TOP:
Huxley Boat Neck LS Knit

BOTTOM:
Everyday Short

REDDING PACKABLE STRAW BUCKET

Brim Length: 7.5cm/3"

M/L-XS/S

\$45/\$90

- Various Fabrics
- Crochet Raffia Straw (Nablk)
- Paper Straw (Nrcfb)
- Plaid Open Weave (Nrcfb)
- Black All Over Stripe Detail (Nablk)
- Moisture Wicking Elastic Sweatband
- Metal Headwear Plaque



NATURAL/BLACK
12017-NABLK



NATURAL/RED
CURRENT/FRENCH BLUE
12017-NRCFB



D1

ELLE STRAW BUCKET HAT

Brim Length: 6cm/2.5"

M/L-XS/S

- 100% Straw
- Crochet Raffia Straw
- Two-Stripe Detail
- Moisture Wicking Elastic Sweatband
- Metal Headwear Plaque
- Multi Color Stripe Detail



COPPER/NATURAL **\$55/\$110**
11624-CONAT



TAN
11624-TAN



TAN/MULTI STRIPE
11624-TNMLS

\$65/\$130

D1

AGNES PACKABLE STRAW BUCKET HA

M/L-XS/S

- 100% Straw
- Crochet Paper Straw
- "On Vacation" Embroidery
- Moisture Wicking Elastic Sweatband
- Metal Headwear Plaque
- Black Scallop Detail
- Checkerboard Pattern



NATURAL/RED CURRENT/FRENCH BLUE
12255-NRCFB



SAND/BLACK SCALLOP
12255-SDBLS



WHITECAP/MAUVE
12255-WCMUV

\$55/\$110



D1

GOODALL PACKABLE GARDEN BUCKET

M/L-XS/S

\$35/\$70

- 100% Cotton
- Washed Cotton Denim
- Self Fabric Neck Tie
- Fringe Brim Edge
- Brixton Embroidery



LIGHT STONE WASH DENIM
12278-LTSWD



D1

LISBOA KNIT PACKABLE BUCKET HA

Brim Length: 7cm/2.75"

M/L-XS/S

\$30/\$60

- 100% Cotton
- Cotton Knit Fabric
- Color Blocked Split
- Moisture Wicking Elastic Sweatband
- Metal Headwear Plaque
- Stripe Detail



BLACK/NATURAL
12015-BKNAT



RED CURRENT/SAND
12015-RDCRS



D1

JOURNEY GOLF BUCKET HAT

**Brim Length: 7.5cm/3" - Crown
Height: 8.5cm/3.375"**

L/XL-S/M

\$45/\$90

- 90% Nylon 10% Elastane
- Water Repellent Stretch Nylon Ripstop
- Detachable Neck Rope
- Size Adjuster Bungee
- Moisture Wicking Elastic Sweatband
- Tee Holder With Brixton Golf Tee Included
- Reflective Heat Transfer Patch



OLIVE TOPO
12256-OLVTP



D1



HEADWEAR ACCESSORIES

Finish the look and keep every piece in rotation. Feathers, hat clips, and headbands offer subtle ways to personalize your hat, while the headwear brush and accessories kit help maintain shape, texture, and longevity. Designed for everyday care and easy styling, these essentials keep your headwear dialed from first wear to last.

DONE PROPER FEDORA TRAVEL CASE

O/S

\$95/\$190

- 100% Ethylene Vinyl Acetate
- 32 Liters
- Leather Patch Details
- Fits Most Wide Brim Hats
- Dwr And Scotchguard Coatings



CREAM/BEIGE
05509-CRMBG



GREY/BLACK
05509-GYBLK

D1

HAT BRUSH

O/S

RETAIL 20.00 | WHSL 10.00

- 100% Wood
- Brixton Logo



BLACK
05378-BLACK

D1

BRIXTON HAT FEATHER

O/S

RETAIL 10.00 | WHSL 5.00

• 100% Bird Feather

D1



BURNT HENNA/BLACK
05515-BNHBK



**BISON/MOJAVE/BURNT
ORANGE**
05515-RSMR0



**BURNT
ORANGE/BLACK/MAHOGANY**
05515-BT0RM



JOE BLUE/BLACK/YELLOW
05515-JOBBY



**MOONLIT
OCEAN/BISON/MOJAVE**
05515-MLOBM



WHITE/BLACK
05515-WHBLK

PROPER HAT CLIP

O/S

RETAIL 30.00 | WHSL 15.00

- 100% Metal
- Works On All Brixton Headwear
- Carabiner Clip



BLACK
05541-BLACK



SAND
05541-SAND

D1

SCROLL KEYCHAIN

O/S

RETAIL 30.00 | WHSL 15.00

- 100% Metal
- Embossed Pattern And Logo
- Nylon Webbing



ANTIQUE BRONZE
05339-ANTBZ

D1

BROOD SNAP CAP

XS-XL

\$30/\$60

- Various Fabrics
- Newsboy Cap
- Herringbone Plaid (Fhbyh)
- Washed Denim (Muvwd)
- Two Tone Corduroy (Wsbbc)
- Herringbone (Black - Brown/Khaki - Grey/Black)
- Custom Liner
- Metal Crest Pin



BLACK
10770-BLACK



BROWN/KHAKI
10770-BRKHK



**FRENCH BLUE/YELLOW
HERRINGBONE**
10770-FHRYH



GREY/BLACK
10770-GYBLK



MAUVE WASHED DENIM
10770-MUVWD



**WET SAND/BROWN BARK
CORDUROY**
10770-WSBBC

D1

BROOD LW SNAP CAP

XS-XL

\$30/\$60

- Various Fabrics
- Newboy Cap
- Herringbone Pinstripe (Blazh)
- Textured Fabric (Sfpnk)
- Lightweight Cooling Liner & Sweatband
- Metal Crest Pin



D1



BLUE AZURE HERRINGBONE
11638-BLAZH



SOFT PINK
11638-SFPNK

HOOLIGAN SNAP CAP

XS-XL

\$30/\$60

- Various Fabrics
- Flat Cap
- Herringbone Plaid (Fhbyh)
- Washed Denim (Muvwd)
- Printed Camo (Trecm)
- Herringbone (Black - Brown/Khaki - Grey/Black)
- Custom Liner
- Metal Crest Pin



BLACK
10771-BLACK



BROWN/KHAKI
10771-BRKHK



**FRENCH BLUE/YELLOW
HERRINGBONE**
10771-FHRYH



GREY/BLACK
10771-GYBLK



MAUVE WASHED DENIM
10771-MUVWD

D1



TREE CAMO
10771-TRECM

HOOLIGAN LW SNAP CAP

XS-XL

\$30/\$60

- Various Fabrics
- Flat Cap
- Herringbone Pinstripe (Blazh)
- Cotton Ripstop (Bgcrs)
- Lightweight Cooling Liner & Sweatband
- Metal Crest Pin



D1



BEIGE COTTON RIPSTOP
11023-BGCRS



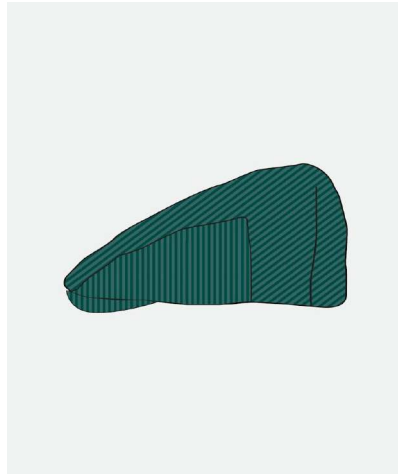
BLUE AZURE HERRINGBONE
11023-BLAZH

BARREL SNAP CAP

XS-XL

\$30/\$60

- Various Fabrics
- Baggy Flat Cap
- Washed Denim (Lgswd)
- Corduroy (Dpgnc)
- Back Embroidery Detail
- Custom Liner



DEEP GREEN CORDUROY
11932-DPGNC



LIGHT STONE WASHED DENIM
11932-LGSWD

D1

FIDDLER CAP

XS-XL

\$30/\$60

- Various Fabrics
- Fisherman Cap
- Herringbone Plaid (Fhbyh)
- Washed Denim (Muvwd)
- Two Tone Canvas And Hickory Stripe (Lthsb)
- Herringbone (Black)
- Custom Liner
- Brixton Embroidery



BLACK
10772-BLACK



**FRENCH BLUE/YELLOW
HERRINGBONE**
10772-FHRYH



LIGHT HICKORY STRIPE/BEIGE
10772-LTHSB



MAUVE WASHED DENIM
10772-MUVWD

D1



HAT:
Hayley RR Snapback

TOP:
Hotel De La Mer boxy Cropped crew Tee

FIDDLER LE CAP

XS-XL

\$30/\$60

- Various Fabrics
- Fisherman Cap
- Cotton (Bkgrn)
- Corduroy (Wsbcc)
- Crown Embroidery Detail
- Brim Embroidery Detail (Bkgrn)
- Custom Liner



BLACK/GREEN
12292-BKGRN



WET SAND/BROWN BARK
CORDUROY
12292-WSBBC

D1

NEWPORT STRAW VISOR

O/S

\$30/\$60

- 100% Straw
- Paper Straw
- Padded Sweatband
- Lightweight Canvas Binding And Liner
- Elastic Back
- Metal Headwear Plaque
- Multi Color Stripe Detail



NATURAL/NATURAL
11702-NATNT



NATURAL/MULTI STRIPE
11702-NTLMS

D1

HAYLEY RAILROAD SNAPBACK

Unstructured High Profile Adjustable Railroad Hat

O/S

\$22.50/\$45

- 100% Polyester
- Merrowed Edge Embroidered Patch
- Crown Pleats
- Moisture Wicking Sweatband
- Adjustable Snapback Closure



HICKORY STRIPE
12288-HCKST



D1



SNAPBACK FIT GUIDE

Defining our snapback fits. Each one shaped with purpose and refined through detail. Every silhouette carries its own distinct style and character.



ATKINS SNAPBACK

LOW PROFILE

An unstructured snapback with a low profile and classic 5 panel and 6 panel front construction. The soft crown naturally conforms to the head for a relaxed, broken-in feel, while the curved bill adds an easy everyday shape. Finished with an adjustable snap closure, it delivers comfort, simplicity, and effortless style.



IDLEWAY SNAPBACK

MEDIUM PROFILE

A structured snapback built with a medium profile and a clean 5 panel and 6 panel construction. The firm front panel holds its shape for a sharp, consistent look, while the curved or flat bill adds a worn in, everyday feel. Finished with an adjustable snap closure, it delivers a balanced fit with a confident, refined profile.



LAMBERT SNAPBACK

VINTAGE PROFILE

The vintage fit features a high profile with a semi-structured 5 and 6 panel build for a bold, confident shape. Designed with a flat bill and taller crown, it delivers a strong silhouette out while maintaining everyday comfort. Finished with an adjustable snap closure for a secure, classic fit.



HAT:
Atkins Snapback

TOP:
Hound Zip Hoodie Fleece

ATKINS SNAPBACK

Unstructured Curved Low Profile 6-Panel

O/S

\$25/\$50

- 100% Cotton
- Washed Cotton Twill
- 3D Embroidery
- Moisture Wicking Sweatband
- Adjustable Snapback Closure
- 100% Polyester



D1



BLACK
12275-BLACK



OFF WHITE/MAUVE
12275-OFWMU

EASTGATE SNAPBACK

Unstructured Curved Low Profile 5-Panel

O/S

\$25/\$50

- 100% Cotton
- Cotton Twill
- Merrowed Edge Printed Patch
- Moisture Wicking Sweatband
- Adjustable Snapback Closure



D1



BLACK
12276-BLACK



OFF WHITE/BROWN
12276-OFWHB

HUXLEY SNAPBACK

Unstructured Curved Low Profile 5-Panel

O/S

\$25/\$50

- 65% Cotton 35% Polyester
- Front And Back Direct Embroidery
- Moisture Wicking Sweatband
- Adjustable Snapback Closure



D1



LIGHT BLUE/NAVY
12284-LBLNV

FLASH ADJUSTABLE HAT

Unstructured Curved Low Profile 6-Panel

O/S

\$27.50/\$55

- 100% Cotton
- All Over Direct Embroidery
- Moisture Wicking Sweatband
- Adjustable Snapback Closure



D1



DEEP GREEN
12285-DEPGN



SAND
12285-SAND

BIG B SNAPBACK

Unstructured Curved Medium Profile 6-Panel

O/S

\$25/\$50

- 100% Cotton
- Cotton Herringbone With Heavy Wash
- Twill Patch With Zig-Zag Stitch
- Moisture Wicking Sweatband
- Adjustable Snapback Closure
- Printed Camo



D1



FRENCH BLUE
12324-FRHBL



TREE CAMO
12324-TRECM

DELMAR SNAPBACK

Unstructured Medium Profile 5-Panel

O/S

\$20/\$40

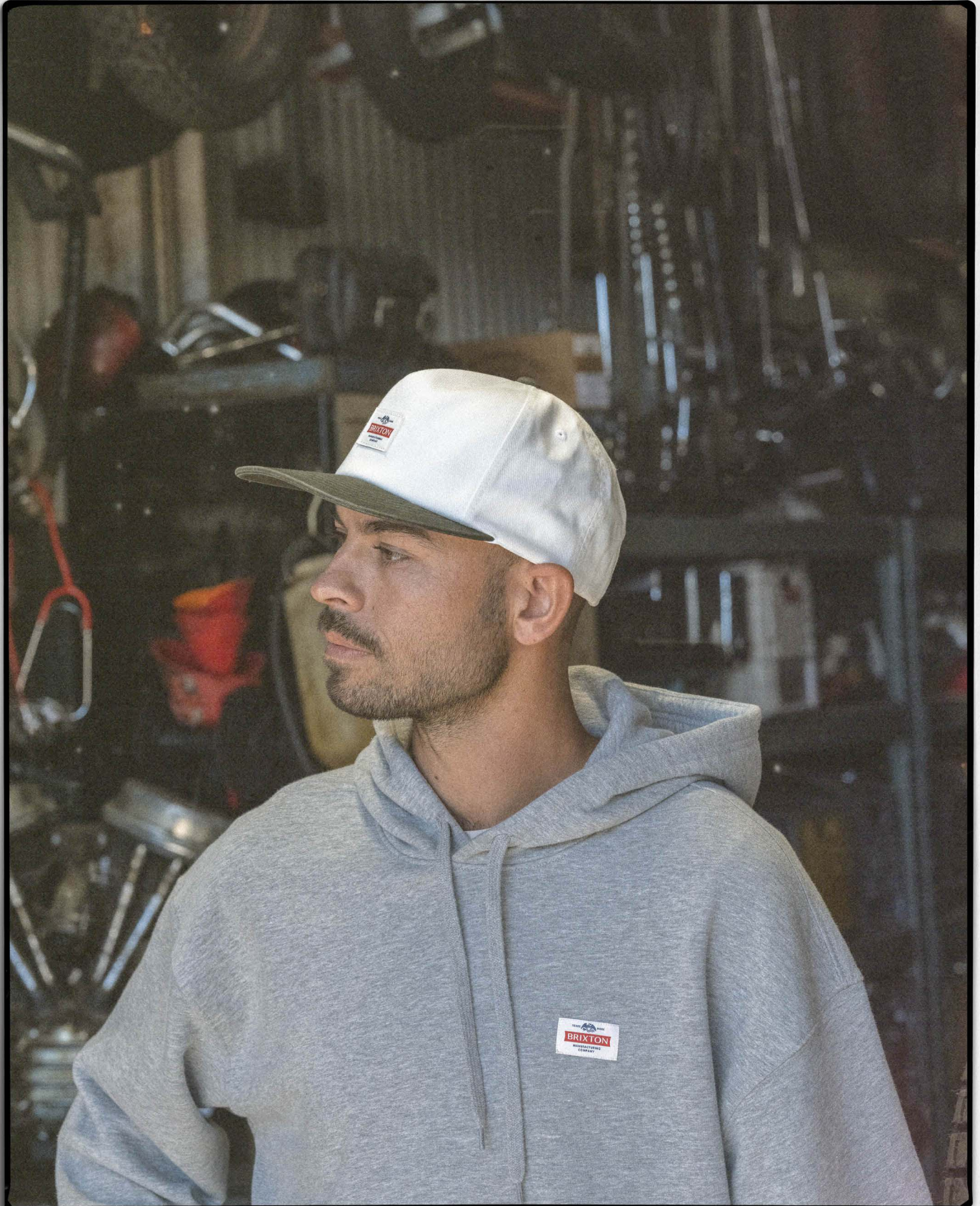
- 100% Cotton
- Front And Side Panel Direct Embroidery
- Moisture Wicking Sweatband
- Adjustable Snapback Closure



D1



SAND/BLACK
12272-SNBLK



HAT:
Trademark Snapback

TOP:
Trademark Hood

FORTRESS SNAPBACK

Semi-Structured Medium Profile 5-Panel

O/S

\$20/\$40

- 100% Cotton
- Front And Back Direct Embroidery
- Moisture Wicking Sweatband
- Adjustable Snapback Closure



D1



BLACK
12273-BLACK

BOYCE SNAPBACK

Semi-Structured Medium Profile 5-Panel

O/S

\$20/\$40

- 100% Recycled Polyester
- Washed Recycled Poly Oxford
- Direct Embroidery
- Moisture Wicking Sweatband
- Adjustable Snapback Closure



D1



DARK TAN/BLACK
12277-DRKTB

TRADEMARK SNAPBACK

Unstructured Medium Profile 5-Panel

O/S

\$22.50/\$45

- 100% Cotton
- Washed Cotton Twill
- Woven Label
- Moisture Wicking Sweatband
- Adjustable Snapback Closure



D1



BLACK
12129-BLACK



OFF WHITE/BALSAM
12129-OWHBS

HARWELL TRUCKER HAT

Semi-Structured Medium Profile 5-Panel

O/S

\$20/\$40

- Front Panel/Visor: 100% Cotton Back Four Panels: 100% Polyester
- Front And Visor Direct Embroidery
- Visor Rope
- Moisture Wicking Sweatband
- Adjustable Snapback Closure



BLACK/BLACK
12265-BKBLK



D1

LODGE TRUCKER HAT

Semi-Structured Medium Profile 5-Panel

O/S

\$20/\$40

- Front Panel/Visor: 100% Recycled Polyester Back Four Panels: 100% Polyester
- Washed Recycled Poly Oxford
- Direct Embroidery
- Moisture Wicking Sweatband
- Adjustable Snapback Closure



BLACK/BLACK
12262-BKBLK



OFF WHITE/PURPLE
12262-OFWPP



D1

FIELD AND STREAM TRUCKER HAT

Semi-Structured Medium Profile 5-Panel

O/S

\$25/\$50

- 60% Polyester 40% Cotton
- Merrowed Edge Printed Felt Patch
- Full Mesh Crown
- Moisture Wicking Sweatband
- Adjustable Snapback Closure



BLACK/BLACK
12264-BKBLK



OLIVE/CAMO
12264-OLVCO



D1

DROP IN TRUCKER HAT

Curved Medium Profile Foam 5-Panel

O/S

\$20/\$40

- 100% Polyester
- Direct Embroidery
- Mesh Back
- Moisture Wicking Sweatband
- Adjustable Snapback Closure



D1



BLACK/WHITE
12269-BKWHT

HUBAL TRUCKER HAT

Curved Medium Profile 5-Panel

O/S

\$20/\$40

- Front Panel/Visor: 100% Cotton Back
- Four Panels: 100% Polyester
- Merrowed Edge Embroidered Patch
- Mesh Back
- Moisture Wicking Sweatband
- Adjustable Snapback Closure



D1



LIGHT STONE WASH DENIM
12268-LTSWD



OFF WHITE/GREEN CORDUROY
12268-OFWGC



SAND/BLACK
12268-SNBLK

OATH MP TRUCKER HAT

Medium Profile 5-Panel

O/S

\$17.50/\$35

- 60% Cotton 40% Polyester
- Merrowed Edge Embroidered Patch
- Mesh Back
- Moisture Wicking Sweatband
- Adjustable Snapback Closure



D1



BLACK/BLACK/BLACK
11627-BBBLK



DARK TAN/RED CURRENT
11627-DKTRC



ROYAL/GREEN/WHITE
11627-RYGRW



HAT:
Mayson Painters Cap

TOP:
Journey LW LS

BOTTOM:
Journey Active Short

MAYSON PAINTERS CAP

Unstructured Adjustable 3-Panel Painter Cap

O/S

\$32.50/\$65

- 97% Polyester 3% Elastane
- Moisture Wicking Stretch Polyester
- Merrowed Edge Embroidered Patch
- Top Panel Screen Print
- Neck Flaps
- Moisture Wicking Sweatband
- Adjustable Snapback Closure



BLACK
12259-BLACK



D1

MAYSON JOURNEY ADJ HAT

Semi-Structured Medium Profile 5-Panel

O/S

\$25/\$50

- 97% Polyester 3% Elastane
- Moisture Wicking Stretch Polyester
- Laser Cut Back Panels
- Merrowed Edge Embroidered Patch
- Eva Packable Visor
- Visor Rope
- Moisture Wicking Sweatband
- Adjustable Stretch Velcro Closure



BLACK/BLACK
12263-BKBLK



D1



TREE CAMO
12263-TRECM

BETA JOURNEY ADJ HAT

Semi-Structured Curved Medium Profile 5-Panel

O/S

\$30/\$60

- 90% Nylon 10% Elastane
- Water Repellent Stretch Nylon Ripstop
- Reflective Heat Transfer
- Moisture Wicking Sweatband
- Adjustable Grosgrain Hook Closure



BLACK
12176-BLACK



D1



OLIVE TOPO
12176-OLVTP

PARKS AND REC SNAPBACK

Curved Medium Profile 5-Panel

O/S

\$20/\$40

- 100% Cotton
- Merrowed Edge Embroidered Patch
- Unique Patch Differs Per Colorway
- Moisture Wicking Sweatband
- Adjustable Snapback Closure



D1



BLACK
12260-BLACK



OFF WHITE/BALSAM
12260-0WHBS



SAND/RED CURRENT
12260-SNDRC

BEST FRIEND SNAPBACK

Curved Medium Profile 5-Panel

O/S

\$20/\$40

- 100% Recycled Polyester
- Direct Embroidery
- Moisture Wicking Sweatband
- Adjustable Snapback Closure



D1



DARK TAN/CLASSIC NAVY
12270-DKTCN



OFF WHITE/GREEN
12270-0FWGN

STRATTON SNAPBACK

Curved Medium Profile 5-Panel

O/S

\$20/\$40

- 100% Cotton
- Direct Embroidery
- Moisture Wicking Sweatband
- Adjustable Snapback Closure



D1



OFF WHITE/BLACK
12271-0FFBK



OLIVE SURPLUS/DARK OLIVE
12271-0LSDO

EYES UP HERE SNAPBACK

Curved Medium Profile 5-Panel

O/S

\$20/\$40

- 100% Cotton
- Front And Side Panel Direct Embroidery
- Moisture Wicking Sweatband
- Adjustable Snapback Closure



OFF WHITE/BLACK
12266-OFFBK



D1

C'EST LA VIE SNAPBACK

Curved Medium Profile 5-Panel

O/S

\$20/\$40

- 100% Cotton
- Front 3D Embroidery
- Side Direct Embroidery
- Moisture Wicking Sweatband
- Adjustable Snapback Closure



CREAM/RED CURRENT
12286-CRMRC



D1

SINK OR SWIM SNAPBACK

Curved Medium Profile 5-Panel

O/S

\$20/\$40

- 100% Recycled Polyester
- Direct Embroidery
- Moisture Wicking Sweatband
- Adjustable Snapback Closure



DARK TAN/BLACK
12287-DRKTB



D1

DE LA MER SNAPBACK

Curved Medium Profile 5-Panel

O/S

\$25/\$50

- 100% Cotton
- Direct Embroidery With Overlaying Chenille & Embroidered Patches
- Moisture Wicking Sweatband
- Adjustable Snapback Closure



OFF WHITE/FRENCH BLUE
12289-OWHFB



D1

CREST C MP SNAPBACK

Curved Medium Profile 5-Panel

O/S

\$22.50/\$45

- 85% Acrylic 15% Wool
- Merrowed Edge Embroidered Patch
- Moisture Wicking Sweatband
- Adjustable Snapback Closure
- 100% Cotton
- Crown: 85% Acrylic 15% Wool Visor: 100% Polyester



BLACK/BLACK
11001-BKBLK



BLACK
11001-BLACK



BALSAM
11001-BLSAM



WHITE/ENIGMA BLUE
11001-WHEMB



D1

LINWOOD SNAPBACK

Curved Medium Profile 5-Panel

O/S

\$22.50/\$45

- 85% Acrylic 15% Wool
- Merrowed Edge Embroidered Patch
- Moisture Wicking Sweatband
- Adjustable Snapback Closure
- Crown: 85% Acrylic 15% Wool Visor: 100% Recycled Polyester
- Front Panel: 100% Recycled Polyester Back Four Panels/Visor: 100% Cotton



BLACK/WHITE
12267-BKWHT



GREY/CLASSIC NAVY
12267-GYCCN



TREE CAMO/DARK TAN
12267-TRCDT



D1

IDLEWAY SNAPBACK

Medium Profile 6-Panel

O/S

\$22.50/\$45

- 100% Cotton
- Front And Side Panel Direct Embroidery
- Moisture Wicking Sweatband
- Adjustable Snapback Closure



D1



BLACK
12274-BLACK



WHITE/RED CURRENT
12274-WHRDC

OATH III SNAPBACK

Medium Profile 6-Panel

O/S

\$22.50/\$45

- 80% Acrylic 20% Wool
- Merrowed Edge Embroidered Patch
- Moisture Wicking Sweatband
- Adjustable Snapback Closure
- 100% Cotton
- 60% Acrylic 30% Polyester 10% Wool



D1



BLACK/BLACK
10777-BKBLK



BLACK
10777-BLACK



BALSAM/TREE CAMO
10777-BLSTC



OFF WHITE/RUSTIC BROWN
10777-OWRSB

\$25/\$50

LAMBERT SNAPBACK

Unstructured Vintage High Profile 6-Panel

O/S

\$22.50/\$45

- 100% Cotton
- Front Felt Applique & Chain Stich Embroidery
- Back Direct Embroidery
- Moisture Wicking Sweatband
- Adjustable Snapback Closure



D1



BLACK
12261-BLACK



CLASSIC
NAVY/BURGUNDY/SAND
12261-CCNBS

HIRSCH SNAPBACK

Unstructured Vintage High Profile 5-Panel

O/S

\$22.50/\$45

- 100% Cotton
- Front Direct And 3D Embroidery
- Moisture Wicking Sweatband
- Adjustable Snapback Closure



BLACK
12290-BLACK



FRENCH BLUE
12290-FRHBL



D1

GRADE SNAPBACK

Unstructured Medium Profile 6-Panel

O/S

\$20/\$40

- 100% Cotton
- Merrowed Edge Embroidered Patch
- Moisture Wicking Sweatband
- Adjustable Snapback Closure



BLACK/OFF WHITE
12184-BKOFF



BROWN BARK/TAWNY YELLOW
12184-BRBTY



WHITE/DEEP GREEN CORDUROY
12184-WHDGC

\$22.50/\$45



D1

USPS LETTER CARRIER FIDDLER

XS-XL

\$30/\$60

- 100% Cotton
- Custom Brixton X Usps Metal Pin At Center Front
- Custom Quilted Liner



SLATE BLUE
12321-SLBLU

D2

USPS LOEWY PATCH TRUCKER HAT

Semi-Structured Medium Profile 5-Panel

O/S

\$22.50/\$45

- Front Panel/Visor: 100% Cotton Back
- Four Panels: 100% Polyester
- Merrowed Edge Embroidered Patch
- Mesh Back
- Moisture Wicking Sweatband
- Adjustable Snapback Closure



NAVY
12322-NAVY

D2

USPS PONY EXPRESS SNAPBACK

Semi-Structured Medium Profile 5-Panel

O/S

\$25/\$50

- 100% Cotton
- Front Screen Print
- Side Panel Embroidery
- Moisture Wicking Sweatband
- Adjustable Snapback Closure



OFF WHITE/BLACK
12323-OFFBK

D2



BRIXTON