



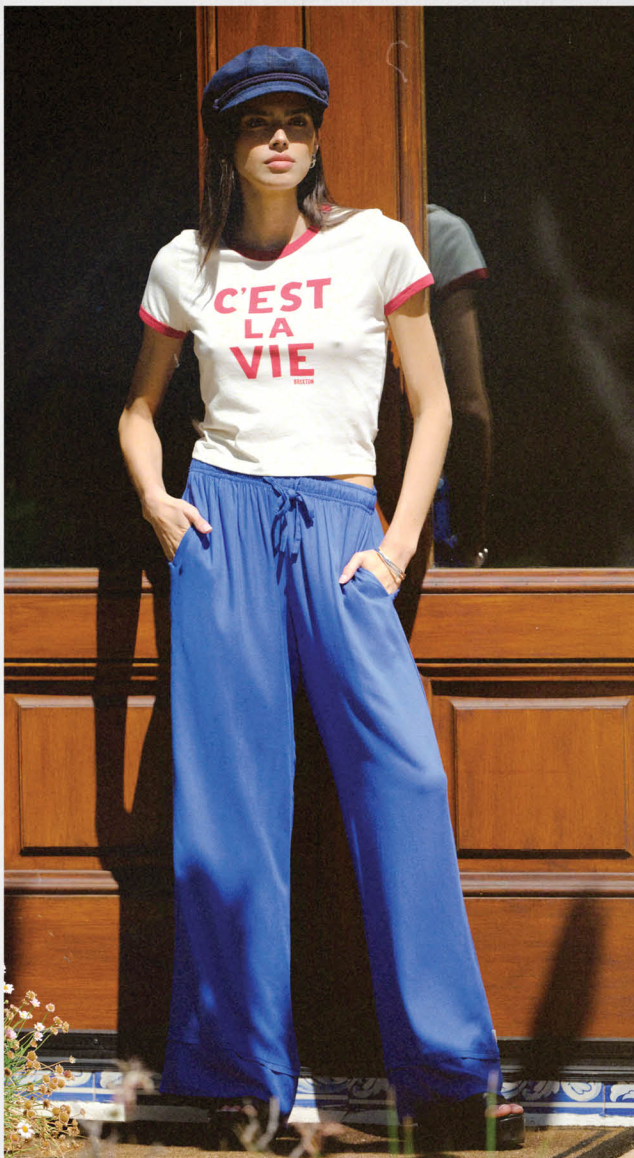

BRIXTON

SPRING 2027
WOMEN'S MAINLINE CATALOG

HERITAGE WORKWEAR ROOTED IN THE FRENCH COAST.

COASTAL WORKS

Spring 2027 explores where rugged utility meets coastal ease, drawing inspiration from the French Basque coast and the timeless character of workwear shaped by salt, sun, and wear. Rooted in the spirit of Bleu de Travail and the enduring language of utility dressing, the collection reinterprets classic chore silhouettes, washed blues, softened structure, and functional details through a distinctly modern Brixton lens. It is a study in toughness and tranquility, where workwear feels lived in, effortless, and ready for wherever the day leads.



Graphics and prints bring personality to the collection through hand-drawn motifs, vintage signage references, coastal ephemera, and playful pattern stories that feel collected rather than manufactured. Nautical stripes, mosaic-inspired textures, and sun-faded florals add rhythm and movement, balancing heritage references with a sense of spontaneity. Across the collection, the attitude is relaxed but intentional, built on authenticity, craft, and a subtle sense of adventure.

BRIXTON

COASTAL WORKS

SPRING 2027



BRIXTON

COASTAL WORKS

SPRING 2027





Color plays a defining role, grounded in washed blues, earthy neutrals, weathered greens, and warm sunlit tones that echo the coastal landscape. Lightweight layers, durable fabrics, airy cottons, and softened textures deliver a wardrobe made for movement and transition, equally suited for work, travel, and everyday escape. Foundational workwear pieces sit alongside more expressive seasonal statements, creating a collection that feels practical, elevated, and deeply connected to place.



At its core, the story is about timeless clothing made for real life. Utility-driven outerwear, relaxed tailoring, stripes, surf-adjacent ease, and Brixton's enduring headwear heritage come together in a collection built for adventure with effortless coastal style. The result feels familiar yet refreshed, grounded in history while looking forward, capturing a world where the road ends and the sea begins.

BRIXTON

COASTAL WORKS

SPRING 2027







Spring 2027 builds on Brixton's foundation of utility and timeless style, bringing together workwear influences, coastal references, and relaxed seasonal dressing in a way that feels both familiar and fresh. Designed with purpose and built for versatility, the collection reflects an effortless approach to modern classics rooted in authenticity.



HEADWEAR

Hats are what Brixton was built on. These core silhouettes are the foundation of everything the brand stands for, each stitch a nod to the craftsmen, musicians, and free spirits who shaped its identity. Designed with purpose and built to last, this is craftsmanship rooted in culture and style that never asks for permission.



LAREDO WTHR GUARD COWBOY HAT

Brim Length: 10.5cm/4" - Crown Height: 12cm/4.75"

XS-XL

\$70/\$140

- 100% Wool Felt
- Hard Stiffness
- Cattleman Crown
- Moisture Wicking Adjustable Sweatband
- Double Wrapped Suede Band
- Metal Headwear Plaque



EARTHLY BROWN
11937-ERYBN



KHAKI
11937-KHAKI



RUSTIC BROWN
11937-RSTBR



D1

JUNIPER PACKABLE HAT

Brim Length: 8.9cm/3.5" - Crown Height: 10.4cm/4"

XS-L

\$50/\$100

- 100% Wool Felt
- Light Stiffness
- Grosgrain Band With Branded Metal Clasp At Back
- Moisture Wicking Adjustable Sweatband



BLACK
12120-BLACK



OFF WHITE
12120-OFFWH



RUSTIC BROWN
12120-RSTBR



D1

MESSER FEDORA

Brim Length: 6.5cm/2.5" - Crown
Height: 9.5cm/3.75"

XS-XL

\$40/\$80

- 100% Wool Felt
- Light Stiffness
- Teardrop Crown
- Adjustable Sweatband
- Faux Leather Band
- Metal Crest Pin



D1



BEIGE
10763-BEIGE



BLACK/BLACK
10763-BKBLK



BLACK
10763-BLACK



DEEP GREEN
10763-DEPGN



RUSTIC BROWN
10763-RSTBR



SAND
10763-SAND



WET SAND
10763-WTSND

MESSER PACKABLE FEDORA

Brim Length: 6.5cm/2.5" - Crown Height: 9.5cm/3.75"

XS-XL

\$45/\$90

- 100% Wool Felt
- Light Stiffness
- Teardrop Crown
- Adjustable Sweatband
- Grosgrain Band
- Metal Crest Pin



D1



BLACK/BLACK
10607-BKBLK

WESLEY FEDORA

Brim Length: 7cm/2.75" - Crown Height: 11cm/4.25"

XS-XL

\$40/\$80

- 100% Wool Felt
- Light Stiffness
- Teardrop Crown
- Adjustable Sweatband
- Leather Band
- Metal Headwear Plaque



D1



BEIGE
10761-BEIGE



BLACK
10761-BLACK



BLUE AZURE
10761-BLUAZ



DEEP GREEN
10761-DEPGN



RUSTIC BROWN
10761-RSTBR

STOUT PORK PIE

Brim Length: 4cm/1.5" - Crown Height: 9cm/3.5"

XS-XL

\$35/\$70

- 100% Wool Felt
- Medium Stiffness
- Uptick Brim
- Diamond Crown
- Adjustable Sweatband
- Custom Liner
- Metal Crest Clip



D1



BLACK/BLACK
10764-BKBLK



DEEP GREEN
10764-DEPGN



WET SAND
10764-WTSND

GAIN FEDORA

Brim Length: 4cm/1.5" - Crown Height: 10cm/4"

XS-XL

- 100% Wool Felt
- Medium Stiffness
- Uptick Brim
- Center Dent Crown
- Adjustable Sweatband
- Custom Liner
- Metal Crest Pin



D1



BLACK
10765-BLACK

\$35/\$70



BARK BROWN/BRONZE
10765-BRBRB

\$40/\$80

SOPHIA KNIT PACKABLE HAT

Brim Length: 8.25cm/3.25" - Crown Height: 10.5cm/4"

M/L-XS/S

\$35/\$70

- 100% Cotton
- Light Breathable Cotton Knit
- Jacquard Knit Pattern At Crown And Brim
- Adjustable Sweatband
- Metal Headwear Plaque



D1



FRENCH BLUE
12165-FRHBL



MAUVE
12165-MAUVE



NATURAL/NATURAL
12165-NATNT

MARA PANAMA RANCHER HAT

Brim Length: 9.8cm/3.75" - Crown Height: 11.4cm/4.5"

XS-L

\$150/\$300

- 100% Straw
- Panama Straw
- Two Tone Straw
- Moisture Wicking Adjustable Sweatband
- Metal Headwear Plaque
- Blanket Stitching



D1



BLACK/NATURAL
12328-BKNAT



TAN/BLACK BLANKET STITCH
12328-TNBBS



KODAK EKTAR 100



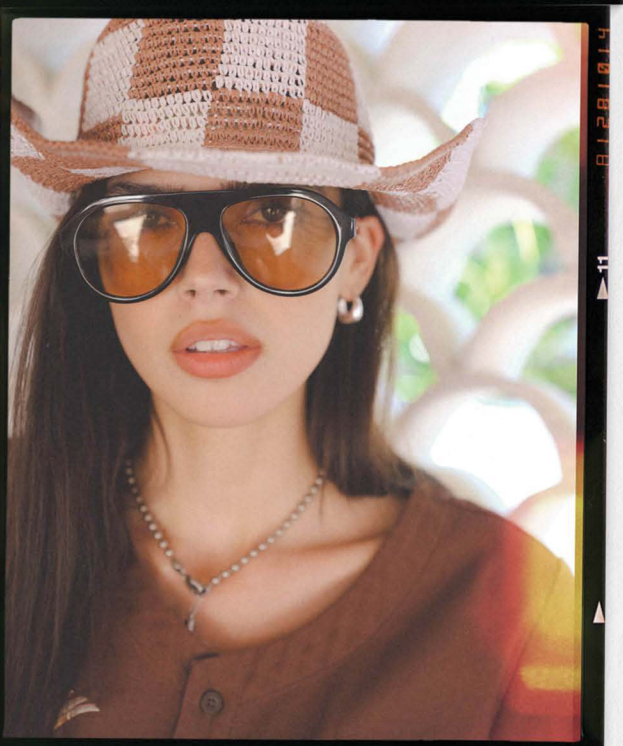
KODAK EKTAR 100



54

KODAK EKTAR 100

53



KODAK EKTAR 100

HAT:
Odessa Straw Packable Cowboy

TOP:
Baseball SS Woven

BOTTOM:
Chloe 5 Pocket Pant

MARLOW BANDANA STRAW RANCHER H

**Brim Length: 10cm/4" - Crown
Height: 11.2cm/4.375"**

XS-L

\$90/\$180

- 100% Straw
- Fine Tripilla Palm Straw
- Side And Back Pencil Roll Brim
- Removable Bandana
- Moisture Wicking Adjustable Sweatband



WHITECAP/WASHED NAVY STRIPE
12251-WCWNS



D1

HELENA STRAW SUN HAT

**Brim Length: 13cm/5.25" - Crown
Height: 12.5cm/5"**

M/L-XS/S

\$70/\$140

- Various Fabrics
- Crochet Raffia Straw (Tan)
- Patterned Paper Straw (Tnbrn)
- Shapeable Brim With Wire
- Teardrop Crown
- Moisture Wicking Adjustable Sweatband
- Metal Headwear Plaque



TAN
12006-TAN



TAN/BROWN
12006-TNBRN



D1

ODESSA STRAW PACKABLE COWBOY H

**Brim Length: 8.25cm/3.25" - Crown
Height: 12cm/4.75"**

M/L-XS/S

\$70/\$140

- 100% Straw
- Crochet Paper Straw
- Moisture Wicking Adjustable Sweatband
- Shapeable Wire Brim
- Cattleman Crown
- Metal Headwear Plaque
- Crochet Raffia Straw



MAUVE/WHITECAP
12004-MUVWC



TAN
12004-TAN



TAN/BLACK
12004-TNBLK



D1

LAREDO STRAW COWBOY HAT

Brim Length: 10.2cm/4" - Crown Height: 12cm/4.75"

XS-XL

\$85/\$170

- 100% Straw
- Bangora Straw
- Cattleman Crown With Custom Vent
- Double Wrapped Faux Suede Band
- Moisture Wicking Adjustable Sweatband
- Metal Headwear Plaque



BONE
12010-BONE



DARK ROAST
12010-DRKRS



D1

PORTO STRAW FEDORA

Brim Length: 9.8cm/3.75" - Crown Height: 11cm/4.25"

M/L-XS/S

\$65/\$130

- 100% Straw
- Paper Straw
- Teardrop Crown
- Window Pane Pattern Vent
- Triple Wrapped Suede Band
- Moisture Wicking Adjustable Sweatband
- Metal Headwear Plaque



TOASTED NATURAL
12065-TSTNL



D1

HARPER PLAID STRAW SUN HAT

Brim Length: 9.5cm/3.75" - Crown Height: 10cm/4"

XS-L

\$50/\$100

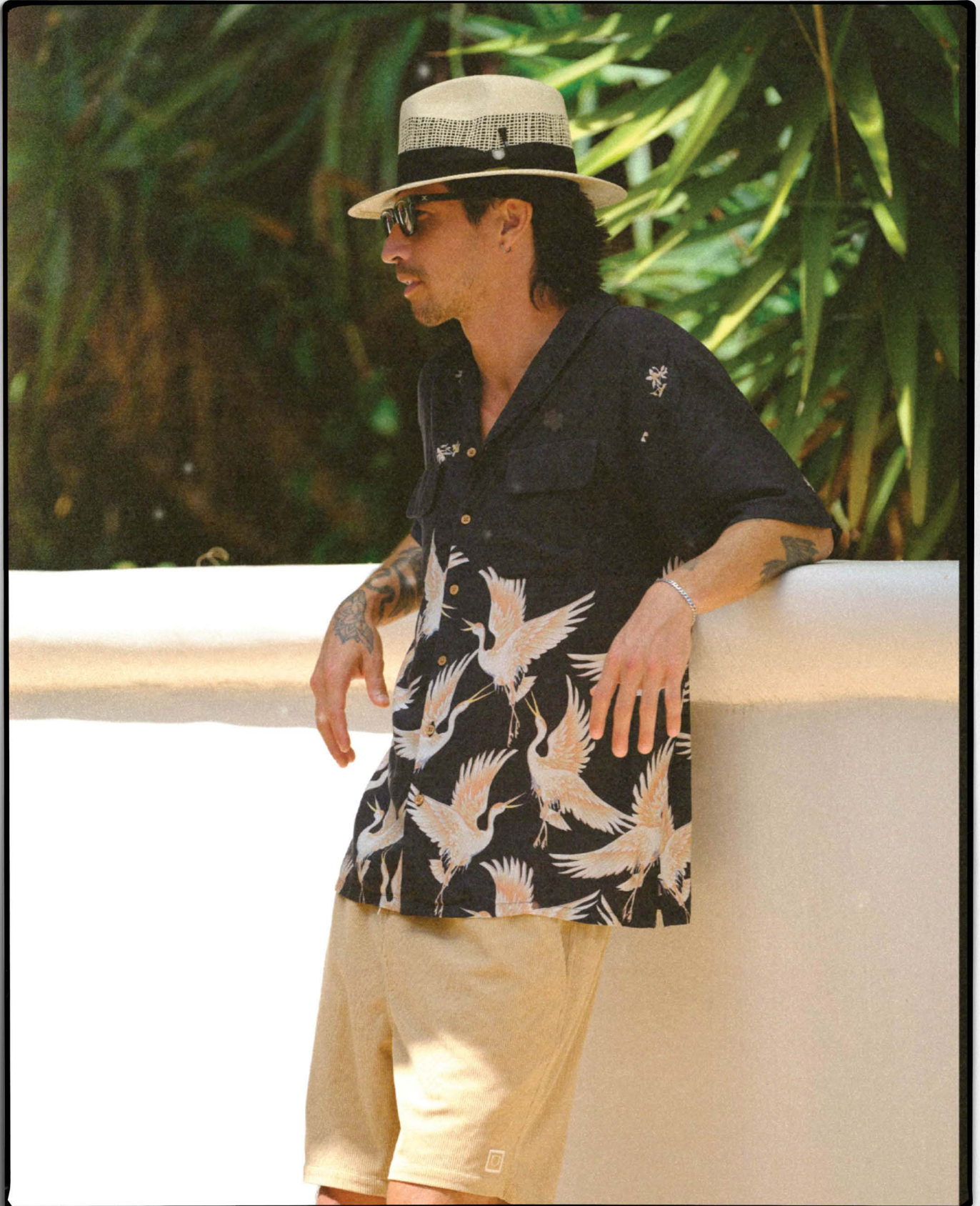
- 100% Straw
- Paper Straw
- Plaid Straw Open Weave
- Adjustable Sweatband
- Metal Headwear Plaque



NATURAL/RED CURRENT/FRENCH BLUE
12252-NRCFB



D1



HAT:
Marley Straw Golf Fedora

TOP:
Paloma SS Print

BOTTOM:
Everyday Corduroy Short

HORTON CB PACKABLE FEDORA

**Brim Length: 5.7cm/2.25" - Crown
Height: 11.8cm/4.75"**

XS-XL

\$30/\$60

- 100% Straw
- Paper Straw
- Grosgrain Band
- Moisture Wicking Adjustable Sweatband
- Metal Crest Pin



DARK TAN/LIGHT BROWN
11834-DKTLB



D1

MARLEY STRAW GOLF FEDORA

**Brim Length: 5.5cm/2.25" - Crown
Height: 11cm/4.25"**

XS-XL

\$45/\$90

- 100% Straw
- Bangora Straw
- Open Vent Crown
- Grosgrain Band
- Moisture Wicking Adjustable Sweatband
- Brixton Golf Tee Included
- Metal Crest Pin



NATURAL/BLACK
12254-NABLK



D1

BLAKE SUN HAT

**Brim Length: 8cm/3.25" - Crown
Height: 11.5cm/4.5"**

XS-XL

\$65/\$130

- 100% Straw
- Tripilla Straw
- Twisted Rope Band
- Teardrop Crown
- Moisture Wicking Adjustable Sweatband
- Metal Headwear Plaque



NATURAL
11828-NATUR



D1

JOANNA HAT

**Brim Length: 10cm/4" - Crown
Height: 12cm/4.75"**

XS-L

\$35/\$70

- 100% Straw
- Wheat Straw
- Teardrop Crown
- Adjustable Sweatband
- Grosgrain Band
- Metal Headwear Plaque



D1



HONEY
10784-HONEY



HONEY/LION
10784-HONLN

WESLEY STRAW PACKABLE FEDORA

**Brim Length: 7cm/2.75" - Crown
Height: 11cm/4.25"**

XS-XL

\$40/\$80

- 100% Straw
- Paper Straw
- Teardrop Crown
- Adjustable Sweatband
- Leather Band
- Metal Headwear Plaque



D1



TAN
10823-TAN

CASTOR FEDORA

**Brim Length: 4.5cm/1.75" - Crown
Height: 11.8cm/4.75"**

XS-XL

\$35/\$70

- 100% Straw
- Paper Straw
- Center Dent Crown
- Adjustable Sweatband
- Grosgrain Band
- Metal Crest Pin



D1



TAN
10767-TAN

RELAX PACKABLE LIFEGUARD HAT

Brim Length: 11cm/4.25" - Crown Height: 10.2cm/4"

O/S

\$40/\$80

- 100% Straw
- Stone Washed Tripilla Palm Straw
- Adjustable Neck Rope & Outside Band
- Merrowed Edge Patch
- Elastic Sweatband



D1



BROWN/BLACK/CREAM
12338-BRBKC



NATURAL/BLUE/RED
12338-NTRBR

MITCH PACKABLE SUN HAT

Brim Length: 11.5cm/4.5" - Crown Height: 10cm/4.25"

L/XL-S/M

\$30/\$60

- 100% Straw
- Paper Straw
- Teardrop Crown
- Elastic Sweatband
- Adjustable Neck Rope
- Metal Headwear Plaque



D1



NATURAL/BLACK MARL
11475-NTLBM



TAN
11475-TAN

BELLS LIFEGUARD HAT

Brim Length: 11cm/4.5" - Crown Height: 10.5cm/4.25"

O/S

\$40/\$80

- 100% Straw
- Palm Straw
- Cattleman Crown
- Elastic Sweatband
- Adjustable Neck Rope
- Leather Fold Label



D1



TAN
12325-TAN



HAT:
Ellee Straw Bucket Hat

TOP:
Huxley Boat Neck LS Knit

BOTTOM:
Everyday Short

REDDING PACKABLE STRAW BUCKET

Brim Length: 7.5cm/3"

M/L-XS/S

\$45/\$90

- Various Fabrics
- Crochet Raffia Straw (Nablk)
- Paper Straw (Nrcfb)
- Plaid Open Weave (Nrcfb)
- Black All Over Stripe Detail (Nablk)
- Moisture Wicking Elastic Sweatband
- Metal Headwear Plaque



NATURAL/BLACK
12017-NABLK



NATURAL/RED
CURRENT/FRENCH BLUE
12017-NRCFB



D1

ELLE STRAW BUCKET HAT

Brim Length: 6cm/2.5"

M/L-XS/S

- 100% Straw
- Crochet Raffia Straw
- Two-Stripe Detail
- Moisture Wicking Elastic Sweatband
- Metal Headwear Plaque
- Multi Color Stripe Detail



COPPER/NATURAL **\$55/\$110**
11624-CONAT



TAN
11624-TAN



TAN/MULTI STRIPE
11624-TNMLS

\$65/\$130

D1

AGNES PACKABLE STRAW BUCKET HA

M/L-XS/S

- 100% Straw
- Crochet Paper Straw
- "On Vacation" Embroidery
- Moisture Wicking Elastic Sweatband
- Metal Headwear Plaque
- Black Scallop Detail
- Checkerboard Pattern



NATURAL/RED CURRENT/FRENCH BLUE
12255-NRCFB



SAND/BLACK SCALLOP
12255-SDBLS



WHITECAP/MAUVE
12255-WCMUV

\$55/\$110



D1

GOODALL PACKABLE GARDEN BUCKET

M/L-XS/S

\$35/\$70

- 100% Cotton
- Washed Cotton Denim
- Self Fabric Neck Tie
- Fringe Brim Edge
- Brixton Embroidery



LIGHT STONE WASH DENIM
12278-LTSWD



D1

LISBOA KNIT PACKABLE BUCKET HA

Brim Length: 7cm/2.75"

M/L-XS/S

\$30/\$60

- 100% Cotton
- Cotton Knit Fabric
- Color Blocked Split
- Moisture Wicking Elastic Sweatband
- Metal Headwear Plaque
- Stripe Detail



BLACK/NATURAL
12015-BKNAT



RED CURRENT/SAND
12015-RDCRS



D1

JOURNEY GOLF BUCKET HAT

**Brim Length: 7.5cm/3" - Crown
Height: 8.5cm/3.375"**

L/XL-S/M

\$45/\$90

- 90% Nylon 10% Elastane
- Water Repellent Stretch Nylon Ripstop
- Detachable Neck Rope
- Size Adjuster Bungee
- Moisture Wicking Elastic Sweatband
- Tee Holder With Brixton Golf Tee Included
- Reflective Heat Transfer Patch



OLIVE TOPO
12256-OLVTP



D1



HEADWEAR ACCESSORIES

Finish the look and keep every piece in rotation. Feathers, hat clips, and headbands offer subtle ways to personalize your hat, while the headwear brush and accessories kit help maintain shape, texture, and longevity. Designed for everyday care and easy styling, these essentials keep your headwear dialed from first wear to last.

DONE PROPER FEDORA TRAVEL CASE

O/S

\$95/\$190

- 100% Ethylene Vinyl Acetate
- 32 Liters
- Leather Patch Details
- Fits Most Wide Brim Hats
- Dwr And Scotchguard Coatings



CREAM/BEIGE
05509-CRMBG



GREY/BLACK
05509-GYBLK

D1

HAT BRUSH

O/S

RETAIL 20.00 | WHSL 10.00

- 100% Wood
- Brixton Logo



BLACK
05378-BLACK

D1

BRIXTON HAT FEATHER

O/S

RETAIL 10.00 | WHSL 5.00

• 100% Bird Feather

D1



BURNT HENNA/BLACK
05515-BNHBK



**BISON/MOJAVE/BURNT
ORANGE**
05515-RSMBR0



**BURNT
ORANGE/BLACK/MAHOGANY**
05515-BT0RM



JOE BLUE/BLACK/YELLOW
05515-JOBBY



**MOONLIT
OCEAN/BISON/MOJAVE**
05515-MLOBM



WHITE/BLACK
05515-WHBLK

PROPER HAT CLIP

O/S

RETAIL 30.00 | WHSL 15.00

- 100% Metal
- Works On All Brixton Headwear
- Carabiner Clip



BLACK
05541-BLACK



SAND
05541-SAND

D1

SCROLL KEYCHAIN

O/S

RETAIL 30.00 | WHSL 15.00

- 100% Metal
- Embossed Pattern And Logo
- Nylon Webbing



ANTIQUE BRONZE
05339-ANTBZ

D1

BROOD SNAP CAP

XS-XL

\$30/\$60

- Various Fabrics
- Newsboy Cap
- Herringbone Plaid (Fhbyh)
- Washed Denim (Muvwd)
- Two Tone Corduroy (Wsbbc)
- Herringbone (Black - Brown/Khaki - Grey/Black)
- Custom Liner
- Metal Crest Pin



BLACK
10770-BLACK



BROWN/KHAKI
10770-BRKHK



**FRENCH BLUE/YELLOW
HERRINGBONE**
10770-FHRYH



GREY/BLACK
10770-GYBLK



MAUVE WASHED DENIM
10770-MUVWD

D1



**WET SAND/BROWN BARK
CORDUROY**
10770-WSBBC

BROOD LW SNAP CAP

XS-XL

\$30/\$60

- Various Fabrics
- Newboy Cap
- Herringbone Pinstripe (Blazh)
- Textured Fabric (Sfpnk)
- Lightweight Cooling Liner & Sweatband
- Metal Crest Pin



D1



BLUE AZURE HERRINGBONE
11638-BLAZH



SOFT PINK
11638-SFPNK

HOOLIGAN SNAP CAP

XS-XL

\$30/\$60

- Various Fabrics
- Flat Cap
- Herringbone Plaid (Fhbyh)
- Washed Denim (Muvwd)
- Printed Camo (Trecm)
- Herringbone (Black - Brown/Khaki - Grey/Black)
- Custom Liner
- Metal Crest Pin



BLACK
10771-BLACK



BROWN/KHAKI
10771-BRKHK



**FRENCH BLUE/YELLOW
HERRINGBONE**
10771-FHRYH



GREY/BLACK
10771-GYBLK



MAUVE WASHED DENIM
10771-MUVWD



TREE CAMO
10771-TRECM

D1

HOOLIGAN LW SNAP CAP

XS-XL

\$30/\$60

- Various Fabrics
- Flat Cap
- Herringbone Pinstripe (Blazh)
- Cotton Ripstop (Bgcrs)
- Lightweight Cooling Liner & Sweatband
- Metal Crest Pin



D1



BEIGE COTTON RIPSTOP
11023-BGCRS



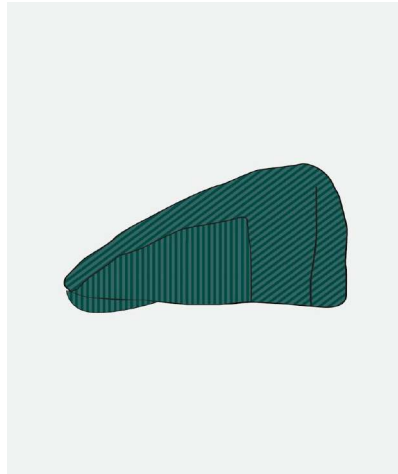
BLUE AZURE HERRINGBONE
11023-BLAZH

BARREL SNAP CAP

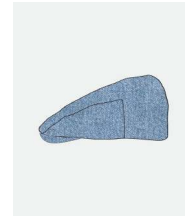
XS-XL

\$30/\$60

- Various Fabrics
- Baggy Flat Cap
- Washed Denim (Lgswd)
- Corduroy (Dpgnc)
- Back Embroidery Detail
- Custom Liner



DEEP GREEN CORDUROY
11932-DPGNC



LIGHT STONE WASHED DENIM
11932-LGSWD

D1

FIDDLER CAP

XS-XL

\$30/\$60

- Various Fabrics
- Fisherman Cap
- Herringbone Plaid (Fhbyh)
- Washed Denim (Muvwd)
- Two Tone Canvas And Hickory Stripe (Lthsb)
- Herringbone (Black)
- Custom Liner
- Brixton Embroidery



BLACK
10772-BLACK



**FRENCH BLUE/YELLOW
HERRINGBONE**
10772-FHRYH



LIGHT HICKORY STRIPE/BEIGE
10772-LTHSB



MAUVE WASHED DENIM
10772-MUVWD

D1



HAT:
Hayley RR Snapback

TOP:
Hotel De La Mer boxy Cropped crew Tee

FIDDLER LE CAP

XS-XL

\$30/\$60

- Various Fabrics
- Fisherman Cap
- Cotton (Bkgrn)
- Corduroy (Wsbcc)
- Crown Embroidery Detail
- Brim Embroidery Detail (Bkgrn)
- Custom Liner



BLACK/GREEN
12292-BKGRN



WET SAND/BROWN BARK
CORDUROY
12292-WSBBC

D1

NEWPORT STRAW VISOR

O/S

\$30/\$60

- 100% Straw
- Paper Straw
- Padded Sweatband
- Lightweight Canvas Binding And Liner
- Elastic Back
- Metal Headwear Plaque
- Multi Color Stripe Detail



NATURAL/NATURAL
11702-NATNT



NATURAL/MULTI STRIPE
11702-NTLMS

D1

HAYLEY RAILROAD SNAPBACK

Unstructured High Profile Adjustable Railroad Hat

O/S

\$22.50/\$45

- 100% Polyester
- Merrowed Edge Embroidered Patch
- Crown Pleats
- Moisture Wicking Sweatband
- Adjustable Snapback Closure



HICKORY STRIPE
12288-HCKST



D1



SNAPBACK FIT GUIDE

Defining our snapback fits. Each one shaped with purpose and refined through detail. Every silhouette carries its own distinct style and character.



ATKINS SNAPBACK

LOW PROFILE

An unstructured snapback with a low profile and classic 5 panel and 6 panel front construction. The soft crown naturally conforms to the head for a relaxed, broken-in feel, while the curved bill adds an easy everyday shape. Finished with an adjustable snap closure, it delivers comfort, simplicity, and effortless style.



IDLEWAY SNAPBACK

MEDIUM PROFILE

A structured snapback built with a medium profile and a clean 5 panel and 6 panel construction. The firm front panel holds its shape for a sharp, consistent look, while the curved or flat bill adds a worn in, everyday feel. Finished with an adjustable snap closure, it delivers a balanced fit with a confident, refined profile.



LAMBERT SNAPBACK

VINTAGE PROFILE

The vintage fit features a high profile with a semi-structured 5 and 6 panel build for a bold, confident shape. Designed with a flat bill and taller crown, it delivers a strong silhouette out while maintaining everyday comfort. Finished with an adjustable snap closure for a secure, classic fit.



HAT:
Atkins Snapback

TOP:
Hound Zip Hoodie Fleece

ATKINS SNAPBACK

Unstructured Curved Low Profile 6-Panel

O/S

\$25/\$50

- 100% Cotton
- Washed Cotton Twill
- 3D Embroidery
- Moisture Wicking Sweatband
- Adjustable Snapback Closure
- 100% Polyester



D1



BLACK
12275-BLACK



OFF WHITE/MAUVE
12275-OFWMU

EASTGATE SNAPBACK

Unstructured Curved Low Profile 5-Panel

O/S

\$25/\$50

- 100% Cotton
- Cotton Twill
- Merrowed Edge Printed Patch
- Moisture Wicking Sweatband
- Adjustable Snapback Closure



D1



BLACK
12276-BLACK



OFF WHITE/BROWN
12276-OFWHB

HUXLEY SNAPBACK

Unstructured Curved Low Profile 5-Panel

O/S

\$25/\$50

- 65% Cotton 35% Polyester
- Front And Back Direct Embroidery
- Moisture Wicking Sweatband
- Adjustable Snapback Closure



D1



LIGHT BLUE/NAVY
12284-LBLNV

FLASH ADJUSTABLE HAT

Unstructured Curved Low Profile 6-Panel

O/S

\$27.50/\$55

- 100% Cotton
- All Over Direct Embroidery
- Moisture Wicking Sweatband
- Adjustable Snapback Closure



DEEP GREEN
12285-DEPGN



SAND
12285-SAND



D1

BIG B SNAPBACK

Unstructured Curved Medium Profile 6-Panel

O/S

\$25/\$50

- 100% Cotton
- Cotton Herringbone With Heavy Wash
- Twill Patch With Zig-Zag Stitch
- Moisture Wicking Sweatband
- Adjustable Snapback Closure
- Printed Camo



FRENCH BLUE
12324-FRHBL



TREE CAMO
12324-TRECM



D1

DELMAR SNAPBACK

Unstructured Medium Profile 5-Panel

O/S

\$20/\$40

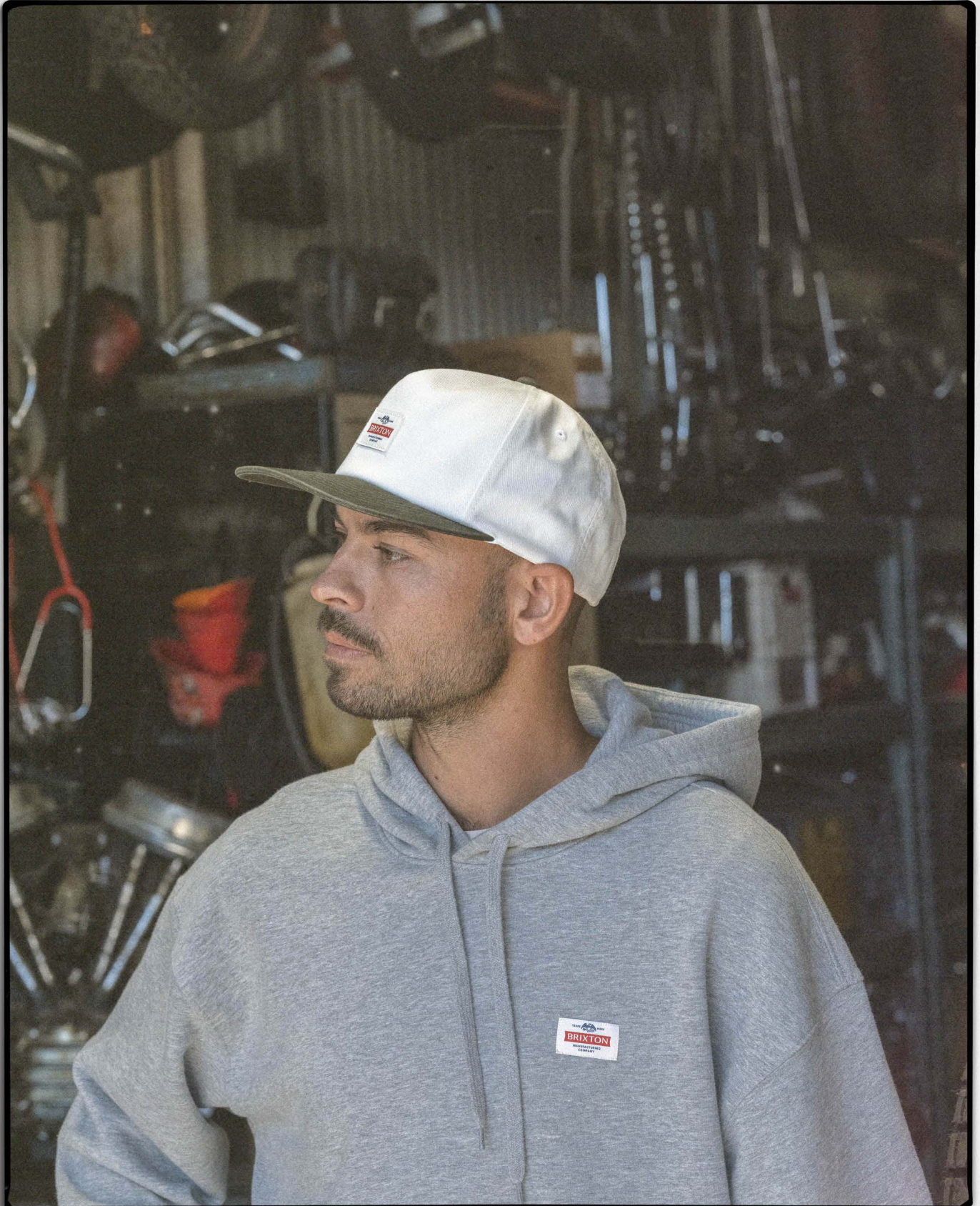
- 100% Cotton
- Front And Side Panel Direct Embroidery
- Moisture Wicking Sweatband
- Adjustable Snapback Closure



SAND/BLACK
12272-SNBLK



D1



HAT:
Trademark Snapback

TOP:
Trademark Hood

FORTRESS SNAPBACK

Semi-Structured Medium Profile 5-Panel

O/S

\$20/\$40

- 100% Cotton
- Front And Back Direct Embroidery
- Moisture Wicking Sweatband
- Adjustable Snapback Closure



BLACK
12273-BLACK



D1

BOYCE SNAPBACK

Semi-Structured Medium Profile 5-Panel

O/S

\$20/\$40

- 100% Recycled Polyester
- Washed Recycled Poly Oxford
- Direct Embroidery
- Moisture Wicking Sweatband
- Adjustable Snapback Closure



DARK TAN/BLACK
12277-DRKTB



D1

TRADEMARK SNAPBACK

Unstructured Medium Profile 5-Panel

O/S

\$22.50/\$45

- 100% Cotton
- Washed Cotton Twill
- Woven Label
- Moisture Wicking Sweatband
- Adjustable Snapback Closure



BLACK
12129-BLACK



OFF WHITE/BALSAM
12129-OWHBS



D1

HARWELL TRUCKER HAT

Semi-Structured Medium Profile 5-Panel

O/S

\$20/\$40

- Front Panel/Visor: 100% Cotton Back Four Panels: 100% Polyester
- Front And Visor Direct Embroidery
- Visor Rope
- Moisture Wicking Sweatband
- Adjustable Snapback Closure



BLACK/BLACK
12265-BKBLK



D1

LODGE TRUCKER HAT

Semi-Structured Medium Profile 5-Panel

O/S

\$20/\$40

- Front Panel/Visor: 100% Recycled Polyester Back Four Panels: 100% Polyester
- Washed Recycled Poly Oxford
- Direct Embroidery
- Moisture Wicking Sweatband
- Adjustable Snapback Closure



BLACK/BLACK
12262-BKBLK



OFF WHITE/PURPLE
12262-OFWPP



D1

FIELD AND STREAM TRUCKER HAT

Semi-Structured Medium Profile 5-Panel

O/S

\$25/\$50

- 60% Polyester 40% Cotton
- Merrowed Edge Printed Felt Patch
- Full Mesh Crown
- Moisture Wicking Sweatband
- Adjustable Snapback Closure



BLACK/BLACK
12264-BKBLK



OLIVE/CAMO
12264-OLVCO



D1

DROP IN TRUCKER HAT

Curved Medium Profile Foam 5-Panel

O/S

\$20/\$40

- 100% Polyester
- Direct Embroidery
- Mesh Back
- Moisture Wicking Sweatband
- Adjustable Snapback Closure



D1



BLACK/WHITE
12269-BKWHT

HUBAL TRUCKER HAT

Curved Medium Profile 5-Panel

O/S

\$20/\$40

- Front Panel/Visor: 100% Cotton Back
- Four Panels: 100% Polyester
- Merrowed Edge Embroidered Patch
- Mesh Back
- Moisture Wicking Sweatband
- Adjustable Snapback Closure



D1



LIGHT STONE WASH DENIM
12268-LTSWD



OFF WHITE/GREEN CORDUROY
12268-OFWGC



SAND/BLACK
12268-SNBLK

OATH MP TRUCKER HAT

Medium Profile 5-Panel

O/S

\$17.50/\$35

- 60% Cotton 40% Polyester
- Merrowed Edge Embroidered Patch
- Mesh Back
- Moisture Wicking Sweatband
- Adjustable Snapback Closure



D1



BLACK/BLACK/BLACK
11627-BBBLK



DARK TAN/RED CURRENT
11627-DKTRC



ROYAL/GREEN/WHITE
11627-RYGRW



HAT:
Mayson Painters Cap

TOP:
Journey LW LS

BOTTOM:
Journey Active Short

MAYSON PAINTERS CAP

Unstructured Adjustable 3-Panel Painter Cap

O/S

\$32.50/\$65

- 97% Polyester 3% Elastane
- Moisture Wicking Stretch Polyester
- Merrowed Edge Embroidered Patch
- Top Panel Screen Print
- Neck Flaps
- Moisture Wicking Sweatband
- Adjustable Snapback Closure



BLACK
12259-BLACK



D1

MAYSON JOURNEY ADJ HAT

Semi-Structured Medium Profile 5-Panel

O/S

\$25/\$50

- 97% Polyester 3% Elastane
- Moisture Wicking Stretch Polyester
- Laser Cut Back Panels
- Merrowed Edge Embroidered Patch
- Eva Packable Visor
- Visor Rope
- Moisture Wicking Sweatband
- Adjustable Stretch Velcro Closure



BLACK/BLACK
12263-BKBLK



D1



TREE CAMO
12263-TRECM

BETA JOURNEY ADJ HAT

Semi-Structured Curved Medium Profile 5-Panel

O/S

\$30/\$60

- 90% Nylon 10% Elastane
- Water Repellent Stretch Nylon Ripstop
- Reflective Heat Transfer
- Moisture Wicking Sweatband
- Adjustable Grosgrain Hook Closure



BLACK
12176-BLACK



D1



OLIVE TOPO
12176-OLVTP

PARKS AND REC SNAPBACK

Curved Medium Profile 5-Panel

O/S

\$20/\$40

- 100% Cotton
- Merrowed Edge Embroidered Patch
- Unique Patch Differs Per Colorway
- Moisture Wicking Sweatband
- Adjustable Snapback Closure



D1



BLACK
12260-BLACK



OFF WHITE/BALSAM
12260-0WHBS



SAND/RED CURRENT
12260-SNDRC

BEST FRIEND SNAPBACK

Curved Medium Profile 5-Panel

O/S

\$20/\$40

- 100% Recycled Polyester
- Direct Embroidery
- Moisture Wicking Sweatband
- Adjustable Snapback Closure



D1



DARK TAN/CLASSIC NAVY
12270-DKTCN



OFF WHITE/GREEN
12270-0FWGN

STRATTON SNAPBACK

Curved Medium Profile 5-Panel

O/S

\$20/\$40

- 100% Cotton
- Direct Embroidery
- Moisture Wicking Sweatband
- Adjustable Snapback Closure



D1



OFF WHITE/BLACK
12271-0FFBK



OLIVE SURPLUS/DARK OLIVE
12271-0LSDO

EYES UP HERE SNAPBACK

Curved Medium Profile 5-Panel

O/S

\$20/\$40

- 100% Cotton
- Front And Side Panel Direct Embroidery
- Moisture Wicking Sweatband
- Adjustable Snapback Closure



OFF WHITE/BLACK
12266-OFFBK



D1

C'EST LA VIE SNAPBACK

Curved Medium Profile 5-Panel

O/S

\$20/\$40

- 100% Cotton
- Front 3D Embroidery
- Side Direct Embroidery
- Moisture Wicking Sweatband
- Adjustable Snapback Closure



CREAM/RED CURRENT
12286-CRMRC



D1

SINK OR SWIM SNAPBACK

Curved Medium Profile 5-Panel

O/S

\$20/\$40

- 100% Recycled Polyester
- Direct Embroidery
- Moisture Wicking Sweatband
- Adjustable Snapback Closure



DARK TAN/BLACK
12287-DRKTB



D1

DE LA MER SNAPBACK

Curved Medium Profile 5-Panel

O/S

\$25/\$50

- 100% Cotton
- Direct Embroidery With Overlaying Chenille & Embroidered Patches
- Moisture Wicking Sweatband
- Adjustable Snapback Closure



OFF WHITE/FRENCH BLUE
12289-OWHFB



D1

CREST C MP SNAPBACK

Curved Medium Profile 5-Panel

O/S

\$22.50/\$45

- 85% Acrylic 15% Wool
- Merrowed Edge Embroidered Patch
- Moisture Wicking Sweatband
- Adjustable Snapback Closure
- 100% Cotton
- Crown: 85% Acrylic 15% Wool Visor: 100% Polyester



BLACK/BLACK
11001-BKBLK



BLACK
11001-BLACK



BALSAM
11001-BLSAM



WHITE/ENIGMA BLUE
11001-WHEMB



D1

LINWOOD SNAPBACK

Curved Medium Profile 5-Panel

O/S

\$22.50/\$45

- 85% Acrylic 15% Wool
- Merrowed Edge Embroidered Patch
- Moisture Wicking Sweatband
- Adjustable Snapback Closure
- Crown: 85% Acrylic 15% Wool Visor: 100% Recycled Polyester
- Front Panel: 100% Recycled Polyester Back Four Panels/Visor: 100% Cotton



BLACK/WHITE
12267-BKWHT



GREY/CLASSIC NAVY
12267-GYCCN



TREE CAMO/DARK TAN
12267-TRCDT



D1

IDLEWAY SNAPBACK

Medium Profile 6-Panel

O/S

\$22.50/\$45

- 100% Cotton
- Front And Side Panel Direct Embroidery
- Moisture Wicking Sweatband
- Adjustable Snapback Closure



D1



BLACK
12274-BLACK



WHITE/RED CURRENT
12274-WHRDC

OATH III SNAPBACK

Medium Profile 6-Panel

O/S

\$22.50/\$45

- 80% Acrylic 20% Wool
- Merrowed Edge Embroidered Patch
- Moisture Wicking Sweatband
- Adjustable Snapback Closure
- 100% Cotton
- 60% Acrylic 30% Polyester 10% Wool



D1



BLACK/BLACK
10777-BKBLK



BLACK
10777-BLACK



BALSAM/TREE CAMO
10777-BLSTC



OFF WHITE/RUSTIC BROWN
10777-OWRSB

\$25/\$50

LAMBERT SNAPBACK

Unstructured Vintage High Profile 6-Panel

O/S

\$22.50/\$45

- 100% Cotton
- Front Felt Applique & Chain Stich Embroidery
- Back Direct Embroidery
- Moisture Wicking Sweatband
- Adjustable Snapback Closure



D1



BLACK
12261-BLACK



CLASSIC
NAVY/BURGUNDY/SAND
12261-CCNBS

HIRSCH SNAPBACK

Unstructured Vintage High Profile 5-Panel

O/S

\$22.50/\$45

- 100% Cotton
- Front Direct And 3D Embroidery
- Moisture Wicking Sweatband
- Adjustable Snapback Closure



D1



BLACK
12290-BLACK



FRENCH BLUE
12290-FRHBL

GRADE SNAPBACK

Unstructured Medium Profile 6-Panel

O/S

\$20/\$40

- 100% Cotton
- Merrowed Edge Embroidered Patch
- Moisture Wicking Sweatband
- Adjustable Snapback Closure



D1



BLACK/OFF WHITE
12184-BKOFF



BROWN BARK/TAWNY YELLOW
12184-BRBTY



WHITE/DEEP GREEN CORDUROY
12184-WHDGC

\$22.50/\$45



BOTTOM'S FIT GUIDE

Designed for her everyday and everything in between. Each piece is shaped with intention, built from durable fabrics, and finished with thoughtful construction that moves as seamlessly as she does. The kind of bottoms that earn a permanent place in the rotation.

5 POCKET



THE CHLOE 5 POCKET PANT

A wide leg pant with a lived-in wash and relaxed silhouette built for effortless all-day wear. Classic 5-pocket construction that feels broken in from the first wear and gets better every time after.

BARREL



EVERYDAY UTILITY BARREL PANT

The barrel pant re imagined for everyday wear. A rounded, full leg that tapers toward the ankle creates a distinctive silhouette that feels as good as it looks. Finished with a mid rise waist and soft fabrication designed to move with her through every moment of the day

PALAZZO



THE COTTAGE PANT

A wide leg pant with a soft elastic waist and flirty ruffle hem detail that balances ease with femininity. The relaxed silhouette and lightweight fabric move beautifully with the body for an effortless, lived-in feel.

WIDE LEG



THE WIDE LEG LOUNGE PANT

A wide leg lounge pant with an adjustable drawstring waist and a refined banded hem that elevates the silhouette. The flowy, lightweight fabrication moves beautifully with the body for an easy, all-day wear that never sacrifices style for comfort.



BRIXTON

COASTAL WORKS

SPRING 2017

KODAK EKTAR 100



HAT:
Odessa Straw Packable Cowboy

TOP:
Baseball W SS Woven

KODAK EKTAR 100



BOTTOM:
Chloe 5 Pkt Pant

THE CHLOE 5 POCKET PANT

Baggy

24-31

\$65/\$130

- 100% Cotton
- 31" Inseam
- 11" Leg Opening
- Mid Rise
- Cotton Slub Sateen Fabric
- Embroidery Detail On Back Pockets
- Zipper Fly
- 5 Pocket Details



BROWN BARK
30075-BRWBK

D1

UTILITY EVERYDAY BARREL PANT

Baggy

XS-XL

\$60/\$120

- Various Fabrics
- 28" Inseam
- 16" Leg Opening
- Mid Rise
- Cotton Herringbone (Olvsp)
- Cotton Nylon (Offwh)
- Corduroy (Wlgnc)
- Elastic Waist With Drawcord
- Front And Back Pockets



OFF WHITE
30101-OFFWH

D1



OLIVE SURPLUS
30101-OLVSP

THE COTTAGE PANT

Relaxed

XS-XL

- Various Fabrics
- 30" Inseam
- 12" Leg Opening
- Mid Rise
- Double Cloth (Black)
- Cotton Viscose (Dstyw)
- Elastic Waistband
- Front Pockets
- Ruffle At Bottom Hem



BLACK **\$45/\$90**
30122-BLACK

D1



DUSTY YELLOW
30122-DSTYW

\$55/\$110

THE WIDE LEG LOUNGE PANT

Relaxed

XS-XL

\$45/\$90

- Various Fabrics
- Cotton Viscose (Owbcp, Frhbl)
- Sheer Herringbone Stripe Mesh (Black)
- 32" Inseam
- 12.5" Leg Opening
- Mid Rise
- Elastic Waist With Drawcord
- Front Pockets
- Flat Piping At Turn Back Hem



BLACK
30123-BLACK



FRENCH BLUE
30123-FRHBL



**OFF WHITE BASQUE COUNTRY
PRINT**
30123-OWBCP

D1



HAT:
Ellee Straw Bucket Hat

TOP:
Huxley Boat Neck LS

BOTTOM:
Everyday W Short

EVERYDAY W SHORT

Standard

XS-XL

\$40/\$80

- Various Fabrics
- 3.5" Inseam
- Mid Rise
- Cotton Herringbone (Frhbl)
- Cotton Nylon (Olvsp)
- Elastic Waist With Drawcord
- Front Pockets
- Sideseam Flag Label



FRENCH BLUE
30106-FRHBL



OLIVE SURPLUS
30106-OLVSP

D1

THE COTTAGE SHORT

Relaxed

XS-XL

\$35/\$70

- Various Fabrics
- 4.5" Inseam
- Mid Rise
- Double Cloth (Black)
- Cotton Linen Blend (Ofwtp)
- Bottom Hem Ruffle
- Sideseam Flag Label



BLACK
30125-BLACK



OFF WHITE PLAID
30125-OFWTP

D1

VINTAGE SLIP SKIRT

Standard

XS-XL

\$30/\$60

- 100% Viscose
- 13" Ousteam
- Elastic Waistband
- Detailed Silky Bow At Center Front
- Lace Hem
- Sideseam Flag Label



STEEL BLUE SCENIC
30124-STLBS

D1

TOP:
The Souvenir Overall

BOTTOM:
Hooligan Snap Cap



TOP:
Mechanics W Garage Zip Jacket

BOTTOM:
The Cottage Pant

MECHANICS W GARAGE ZIP JACKET

Standard

XS-XL

\$70/\$140

- Various Fabrics
- 21.5" Hps
- Cotton Herringbone (Frhbl)
- Double Brushed Jacquard Flannel (Muvwc)
- Contrast Corduroy Collar (Muvwc)
- Zipper Front
- Sideseam Flag Label



FRENCH BLUE
03453-FRHBL



MAUVE/WHITECAP
03453-MUVWC

D1

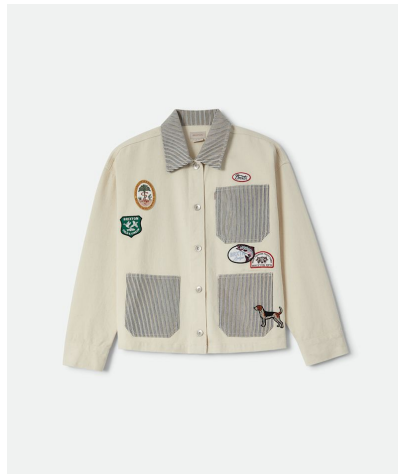
THE SOUVENIR BARN JACKET

Relaxed

XS-XL

\$85/\$170

- 100% Cotton
- 24" Hps
- Cotton Twill With Contrast Hickory Stripe Collar And Pockets
- Center Front Button Closure
- Patch Details On Front And Back
- Centerback Screenprint



NATURAL PATCHWORK
03521-NTLPW

D1

THE SOUVENIR OVERALL

Relaxed

XS-XL

\$100/\$200

- 100% Cotton
- 32" Inseam
- 11" Leg Opening
- Cotton Twill With Contrast Hickory Stripe Straps, Waistband And Pockets
- Adjustable Shoulder Straps And Waist Straps
- Center Front Faux Fly
- Front And Back Pockets



NATURAL PATCHWORK
30128-NTLPW

D1



HAT:
Redding Packable Straw Bucket

BOTTOM:
The Club Linen Shirt Dress

THE CLUB LINEN SHIRTDRESS

Standard

M/L-XS/S

\$70/\$140

- 55% Linen 45% Viscose
- 33.5" Hps
- Center Front Button Closure
- Left Chest Pocket With Embroidery
- Center Back Embroidery
- Interior Lining



OFF WHITE
30127-OFFWH

D1

TIE MINI DRESS

Standard

XS-XL

\$45/\$90

- 100% Cotton
- 34" Hps
- Adjustable Shoulder Straps
- Smocking At Center Back
- Tie Front With Keyhole
- Logo Flag Label



OFF WHITE BASQUE COUNTRY PRINT
01549-OWBCP

D1

THE MOLLY DRESS

Standard

XS-XL

\$55/\$110

- Various Fabrics
- 52" Hps
- Elastic Under Bust For Adjustability
- Invisible Sideseam Zipper
- Back Waist Tie For Adjustability
- Cotton Viscose (Frhbl)
- Double Cloth (Muvwc)
- Sideseam Flag Label



FRENCH BLUE
30126-FRHBL

D1



MAUVE/WHITECAP
30126-MUVWC

DOLLY L/S KNIT DRESS

Slim

XS-XL

\$45/\$90

- Various Fabrics
- Cotton/Elastane (Muvpl)
- Cotton (Wnows)
- 33" Hps
- Pointelle (Muvpl)
- 250 Gsm Cotton Pique Yarn Dyed Stripe
- Contrast Neck(Wnows)
- Sideseam Flag Label



MAUVE POINTELLE
22840-MUVPL



**WASHED NAVY/OFF WHITE
STRIPE**
22840-WN0WS

D1



HAT:
Helena Straw Sun Hat

TOP:
The Savannah Top

BOTTOM:
The Cottage Pant

THE SAVANNAH TOP

Relaxed

XS-XL

\$40/\$80

- Various Fabrics
- 15" Front Body Length Without Straps
- Cotton Viscose (Dstyw)
- Cotton Linen Blend (Ofwtp)
- Adjustable Straps
- Center Back Smocking
- Peplum On Bottom
- Sideseam Flag Label



DUSTY YELLOW
01541-DSTYW



OFF WHITE PLAID
01541-OFWTP

D1

BASEBALL W S/S WOVEN

Relaxed

XS-XL

\$45/\$90

- Various Fabrics
- 23" Hps
- Cotton Slub Sateen (Brwbk)
- Viscose (Stlbs)
- Center Front Button Closure With Split Opening
- Sideseam Flag Label
- Front Chest Embroidery Detail (Brwbk)



BROWN BARK
01540-BRWBK



STEEL BLUE SCENIC
01540-STLBS

D1



HAT:
Fiddler Le Cap

TOP:
Huxley Boat Neck LS Knit

BOTTOM:
Vintage Slip Skirt

HUXLEY BOATNECK L/S KNIT

Relaxed

XS-XL

\$45/\$90

- 100% Cotton
- 24" Hps
- 320 Gsm Cotton
- Boatneck With Set In Unfinished Rib
- Left Chest Pocket
- Screenprint Detail At Pocket (Offwh)
- Wearers Right Chest Embroidery Detail (Offwh)



OFF WHITE
23208-OFFWH



WASHED NAVY/OFF WHITE
STRIPE
23208-WN0WS

D1

CAREFREE LINEN BABY TEE

Slim

XS-XL

\$25/\$50

- 80% Cotton 20% Linen
- 21" Hps
- 150 Gsm Cotton Linen
- Collar And Hem Rib Binding With Contrast Piping
- Center Back Body Seam Detail
- Logo Flag Label



MAUVE/OFF WHITE
23207-MUVOW



OFF WHITE/BLACK
23207-OFFBK



STEEL BLUE/FRENCH BLUE
23207-STBFB

D1

CAREFREE ORGANIC GD PERFECT TE

Standard

XS-XL

\$25/\$50

- 100% Organic Cotton
- 22" Hps
- 175 Gsm Organic Cotton Jersey
- Garment Dye With Acid Worn Wash
- Center Back Body Seam Detail
- Rib Neck Binding
- Front Left Chest Pocket
- Logo Flag Label



BLACK
22679-BLACK



FRENCH BLUE
22679-FRHBL



OFF WHITE
22679-OFFWH

D1

RINGER ORGANIC A-TANK

Slim

XS-XL

\$20/\$40

- Various Fabrics
- 18" Hps
- Cotton 2X2 Rib (Brwbk)
- Pointelle (Mlwyw)
- Binded Neck And Armhole With Contrast Piping
- Center Front Embroidery



BROWN BARK
22755-BRWBK



MELLOW YELLOW
22755-MLWYW

D1

MESH JERSEY

Relaxed

XS-XL

\$35/\$70

- Various Fabrics
- 25" Hps
- Sheer Herringbone Stripe Mesh (Bkdy)
- Cotton Poly Mesh (Lbows)
- Left Chest Screenprint
- Contrast Rib At Neck And Sleeve Hem
- Contrast Shoulder Stripe Detail



BLACK/DUSTY YELLOW
23209-BKDTY



LIGHT BLUE/OFF WHITE STRIPE
23209-LBOWS

D1

SCENIC RINGER TANK

Slim

XS-XL

\$20/\$40

- 98% Cotton 2% Lycra
- 18" Hps
- All Over Print
- Contrast Ringer Binding At Neck And Arm Hole
- Sideseam Flag Label



STEEL BLUE SCENIC
23212-STLBS

D1

FINISH LINE RINGER TANK

Slim

XS-XL

RETAIL 30.00 | WHSL 15.00

- 98% Cotton 2% Lycra
- 18" Hps
- Center Front Embroidery Detail
- Contrast Ringer Binding At Neck And Arm Hole
- Sideseam Flag Label



BLACK/OFF WHITE
23213-BKOFF

D1

THESE BOOTS CROPPED RAGLAN TEE

Slim

XS-XL

\$25/\$50

- 100% Cotton
- 19" Hps
- Color Blocked Raglan Sleeve And Neck Binding
- Center Front Screenprint
- Sideseam Flag Label
- Bci Cotton



DUSTY YELLOW/BROWN BARK
23240-DSYBB

D1

EYES UP HERE CROPPED RAGLAN TE

Slim

XS-XL

\$25/\$50

- 100% Cotton
- 19" Hps
- Color Blocked Raglan Sleeve And Neck Binding
- Center Front Screenprint
- Sideseam Flag Label
- Bci Cotton



OFF WHITE/BLACK
23214-OFFBK

D1

C'EST LA VIE BABY TEE

Slim

XS-XL

\$25/\$50

- 100% Cotton
- 18" Hps
- Contrast Binding At Neck And Sleeve
- Center Front Screenprint
- Sideseam Flag Label
- Bci Cotton



OFF WHITE/RED CURRENT
23216-OFWRC

D1

SINK OR SWIM BABY TEE

Slim

XS-XL

\$25/\$50

- 100% Cotton
- 18" Hps
- Left Chest And Center Back Screenprint
- Sideseam Flag Label
- Bci Cotton



BLACK
23217-BLACK

D1

COLLAGE SLIM CREW TEE

Slim

XS-XL

\$25/\$50

- 100% Cotton
- 22" Hps
- Center Front Screenprint
- Hi Density Print
- And Embroidery Detail
- Sideseam Flag Label
- Bci Cotton



OFF WHITE
23218-OFFWH

D1

DISCOVER UNCHARTERED SLIM TEE

Slim

XS-XL

425/\$50

- 100% Cotton
- 22" Hps
- Contrast Ringer Neck
- Left Chest And Center Back Screenprint
- Bci Cotton



STEEL BLUE/FRENCH BLUE
23219-STBFB

D1

BRIXTON

COASTAL WORKS

SPRING 2027



HAT:
Hayley RR Snapback

BOTTOM:
Hotel De La Mer boxy Cropped Crew Tee

®

COASTAL CRUISING STANDARD TEE

Standard

XS-XL

\$20/\$40

- 100% Cotton
- 22" Hps
- Left Chest And Center Back Screenprint
- Sideseam Flag Label
- Bci Cotton



OFF WHITE
23220-OFFWH

D1

ICE CREAM STAND STANDARD TEE

Standard

XS-XL

\$20/\$40

- 100% Cotton
- 22" Hps
- Left Chest Embroidery
- Center Back Screenprint
- Sideseam Flag Label
- Bci Cotton



BROWN BARK
23221-BRWBK

D1

HOTEL DE LA MER BOXY CREW TEE

Relaxed

XS-XL

\$25/\$50

- 100% Cotton
- 23" Hps
- Center Front Screenprint
- Sideseam Flag Label
- Bci Cotton



OFF WHITE
23222-OFFWH

D1

FIELD AND STREAM BOXY CREW TEE

Relaxed

XS-XL

\$25/\$50

- 100% Cotton
- 23" Hps
- Left Chest And Center Back Screenprint
- Sideseam Flag Label
- Bci Cotton



OLIVE SURPLUS
23223-OLVSP

D1



TOP:
Hound Zip

MID:
Carefree Linen Baby Tee

BOTTOM:
Everyday Utility Barrel Pant

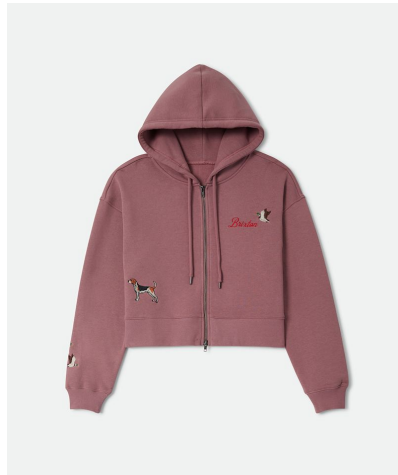
HOUND ZIP HOOD

Relaxed

XS-XL

\$45/\$90

- 80% Cotton 20% Polyester
- 20" Hps
- Embroidery Detail All Over
- Two Way Zipper
- Sideseam Flag Label
- Bci Cotton



MAUVE
23225-MAUVE

D1

DOUBLE B BRIXTON HOOD

Relaxed

XS-XL

\$45/\$90

- 80% Cotton 20% Polyester
- 25.5" Hps
- Center Front Screenprint And Embroidery
- Center Back Screenprint
- Bci Cotton



FRENCH BLUE
23239-FRHBL

D1

VINTAGE POSTCARD OVERSIZED CRE

Oversized

XS-XL

\$40/\$80

- 80% Cotton 20% Polyester
- 28.5" Hps
- Left Chest And Center Back Screenprint
- Sideseam Flag Label
- Bci Cotton



OFF WHITE
23224-OFFWH

D1

BRIXTON & USPS – FRIENDLY UNION



“OUT FOR DELIVERY”

USPS

Brixton links up with one of America's most iconic institutions for a collaboration that feels as classic as it does unexpected. The USPS collection brings together the postal service's rich workwear heritage and recognizable visual identity, translated into a range of headwear and garments designed for life on the move. Delivered in true Brixton fashion.

USPS LETTER CARRIER FIDDLER

XS-XL

\$30/\$60

- 100% Cotton
- Custom Brixton X Usps Metal Pin At Center Front
- Custom Quilted Liner



SLATE BLUE
12321-SLBLU

D2

USPS LOEWY PATCH TRUCKER HAT

Semi-Structured Medium Profile 5-Panel

O/S

\$22.50/\$45

- Front Panel/Visor: 100% Cotton Back
- Four Panels: 100% Polyester
- Merrowed Edge Embroidered Patch
- Mesh Back
- Moisture Wicking Sweatband
- Adjustable Snapback Closure



NAVY
12322-NAVY

D2

USPS PONY EXPRESS SNAPBACK

Semi-Structured Medium Profile 5-Panel

O/S

\$25/\$50

- 100% Cotton
- Front Screen Print
- Side Panel Embroidery
- Moisture Wicking Sweatband
- Adjustable Snapback Closure



OFF WHITE/BLACK
12323-OFFBK

D2

USPS LETTER CARRIER JACKET

Relaxed

S-XXL

\$80/\$160

- 100% Polyester
- 1960S Letter Carrier Inspired Work Jacket
- Two Chest Pockets With Flaps
- Two Hand Welt Pockets
- Zip Front Closure
- Brixton X Usps Metal Pin
- Usps Patch Included On Hangtag



SLATE BLUE
03528-SLBLU

D2

USPS FRIENDLY UNION FLANNEL

Relaxed

S-XXL

\$50/\$100

- 100% Cotton
- Cotton Yarn Dyed Flannel
- Usps X Brixton Friendly Union Woven Label At Bottom Hem
- Two Top Entry Chest Pockets With Button Closure
- Usps Patch Included On Hangtag



RED/WHITE/BLUE
01564-RDWTL

D2

USPS STAMPS S/S WOVEN

Standard

S-XXL

\$45/\$90

- 62% Cotton 36% Polyester 2% Elastane
- Custom Vintage Stamp All Over Print
- Single Left Chest Pocket
- Usps Patch Included On Hangtag



OFF WHITE/STAMPS
01565-OFWST

D2

USPS AIR MAIL POCKET TEE

Standard

S-XXL

\$30/\$60

- 100% Cotton
- Vintage Wash
- Left Chest Screen Print On Pocket
- Center Back Screen Print



WASHED NAVY
23297-WANAV

D2

USPS WING STENCIL RINGER TEE

Standard

S-XXL

\$30/\$60

- 100% Cotton
- Contrast Ringer Binding At Neck And Sleeve Opening
- Center Front Screen Print



OFF WHITE/RED
23298-OFFRD

D2

USPS PONY EXPRESS TEE

Standard

S-XXL

\$30/\$60

- 100% Cotton
- Front Embroidery
- Back Screen Print
- W



HEATHER GREY
23299-HTGRY

D2

USPS EAGLE MUSCLE TEE

Relaxed

S-XXL

\$30/\$60

- 60% Cotton 40% Polyester
- Front Screen Print



OFF WHITE
23300-OFFWH

D2

USPS WING STENCIL CREW FLEECE

Standard

S-XXL

\$50/\$100

- 100% Cotton
- Front And Back Screen Print
- Label At Bottom Hem



HEATHER GREY
23301-HTGRY

D2

USPS PONY EXPRESS HOOD

Standard

S-XXL

\$55/\$110

- 80% Cotton 20% Polyester
- Left Chest Embroidery
- Back Screen Print



WASHED BLACK
23302-WABLK

D2

USPS EAGLE HOOD

Standard

S-XXL

\$55/\$110

- 80% Cotton 20% Polyester
- Front And Back Screen Print



WASHED NAVY
23303-WANAV

D2

USPS LOEWY W RINGER TEE

Slim

XS-XL

\$30/\$60

- 100% Cotton
- 22" Hps
- Contrast Ringer Binding At Neck And Sleeve Opening
- Front And Back Screen Print



OFF WHITE/BLUE
23304-OFFBL

D2

USPS PONY EXPRESS W TEE

Slim

XS-XL

\$30/\$60

- 100% Cotton
- 22" Hps
- Front Screen Print



WASHED BLACK
23305-WABLK

D2



BRIXTON